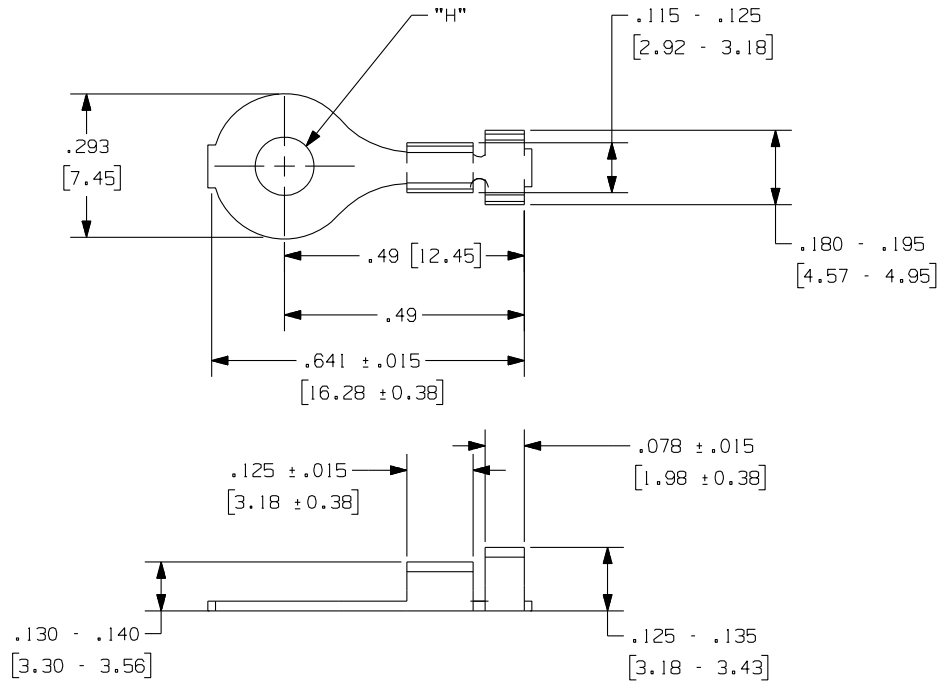


905 & 914

Rev.

APPLICATION DRAWING



PART No. 905 - WIRE CRIMP: #22-16 AWG WIRE
 PART No. 914 - WIRE CRIMP: #26-22 AWG WIRE
 INSULATION CRIMO: 0.075/0.130 DIA. (1.91/3.30)

PART No.	"H"	MATERIAL	FINISH
905-120	.120 { 3.048mm }	.020 { .508mm } PRE-TINNED BRASS	PRE-FINISHED 100% HOT TIN
905-144	.144 { 3.658mm }	.020 { .508mm } PRE-TINNED BRASS	PRE-FINISHED 100% HOT TIN
905-169	.169 { 4.293mm }	.020 { .508mm } PRE-TINNED BRASS	PRE-FINISHED 100% HOT TIN
914-120	.120 { 3.048mm }	.020 { .508mm } PRE-TINNED BRASS	PRE-FINISHED 100% HOT TIN
914-120-14	.120 { 3.048mm }	.020 CDA 260 BRASS	GOLD OVER NICKEL
914-144	.144 { 3.658mm }	.020 { .508mm } PRE-TINNED BRASS	PRE-FINISHED 100% HOT TIN
914-169	.169 { 4.293mm }	.020 { .508mm } PRE-TINNED BRASS	PRE-FINISHED 100% HOT TIN
914-196	.196 { 4.978mm }	.020 { .508mm } PRE-TINNED BRASS	PRE-FINISHED 100% HOT TIN

Zierick Product Related Recommendations are general guidelines only. Since each customer's design, process and application is different it is necessary that customers thoroughly test our products in specific applications.



Radio Circle Drive
 Mount Kisco, New York 10549

RING SPADE
 TERMINAL

THIS DOCUMENT AND THE CONFIDENTIAL INFORMATION CONTAINED HERE ARE THE PROPERTY OF ZIERICK MANUFACTURING CORPORATION AND MAY NOT BE USED IN WHOLE OR IN PART IN ANY WAY, OR COMMUNICATED TO ANY PARTY OTHER THAN THE RECIPIENT WITHOUT THE EXPRESS PRIOR WRITTEN CONSENT OF ZIERICK MANUFACTURING CORPORATION.

905 & 914