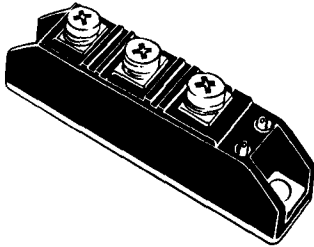


**POWER MOS**

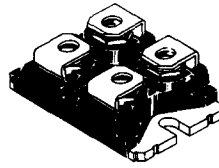
V <sub>(BR) DSS</sub> (V)	R <sub>DS(on)</sub> max (Ω)	@ I <sub>D</sub> (A)	Package	Type	I <sub>D</sub> max (A)	P <sub>tot</sub> (W)	g <sub>fs</sub> min (mho)	C <sub>iss</sub> max (pF)
100	0.055	22	TO 218	IRFP150	40	150	13	3000
100	0.055	22	ISOWATT 218	IRFP150FI	26	65	13	3000
100	0.014	50	TO 240	SGS100MA010D1	120	400	20	11200
100	0.014	60	ISOTOP	TSD4M150V	135	500	20	11200
100	0.009	75	TO 240	SGS150MA010D1	150	400	20	14000
150	1.2	2.5	TO 220	IRF623	4	40	1.3	600
150	1.2	2.5	ISOWATT 220	IRF623FI	3.5	30	1.3	600
150	0.8	2.5	TO 220	IRF621	5	40	1.3	600
150	0.8	2.5	ISOWATT 220	IRF621FI	4	30	1.3	600
200	1.2	2.5	TO 220	IRF622	4	40	1.3	600
200	1.2	2.5	ISOWATT 220	IRF622FI	3.5	30	1.3	600
200	0.8	2.5	TO 220	IRF620	5	40	1.3	600
200	0.8	2.5	ISOWATT 220	IRF620FI	4	30	1.3	600
200	0.75	3	TO 220	SGSP317	6	75	1.5	500
200	0.4	4.5	TO 220	BUZ32	9.5	75	2.2	2000
200	0.33	6	TO 220	SGSP367	12	100	3	1200
200	0.17	10	TO 218	SGSP477	20	150	8	2200
200	0.17	10	TO 3	SGSP577	20	150	8	2200
200	0.021	60	ISOTOP	TSD4M250V	110	500	28	12000
250	1.2	2.5	TO 220	SGSP316	5	75	1.5	500
250	0.45	5	TO 220	SGSP363	10	100	3	1200
350	2.5	1.8	TO 220	IRF723	2.8	50	1	800
350	2.5	1.8	ISOWATT 220	IRF723FI	2	30	1	600
350	1.8	1.8	TO 220	IRF721	3.3	50	1	600
350	1.8	1.8	ISOWATT 220	IRF721FI	2.5	30	1	600
350	1.5	3	TO 220	IRF733	4.5	74	2.9	800
350	1.5	3	ISOWATT 220	IRF733FI	3	35	2.9	800
350	1	3	TO 220	IRF731	5.5	74	2.9	800
350	1	3	ISOWATT 220	IRF731FI	3.5	35	2.9	800
350	0.8	5.2	TO 220	IRF743	8.3	125	4	1600
350	0.8	5.2	ISOWATT 220	IRF743FI	4.5	40	4	1600
350	0.55	5.2	TO 220	IRF741	10	125	4	1600
350	0.55	5.2	ISOWATT 220	IRF741FI	5.5	40	4	1600
350	0.075	30	ISOTOP	TSD4M351V	50	500	28	12000
400	20	0.3	TO 220	SGSP341	0.8	18	0.1	105
400	2.5	1.5	TO 220	BUZ76A	2	40	0.8	600
400	2.5	1.8	TO 220	IRF722	2.8	50	1	600
400	2.5	1.8	ISOWATT 220	IRF722FI	2	30	1	600
400	1.8	1.5	TO 220	BUZ76	3	40	0.8	500
400	1.8	1.8	TO 220	IRF720	3.3	50	1	600
400	1.8	1.8	ISOWATT 220	IRF720FI	2.5	30	1	600
400	1.5	2.5	TO 220	BUZ60B	4.5	75	1.7	2000
400	1.5	3	TO 220	IRF732	4.5	74	2.9	800
400	1.5	3	ISOWATT 220	IRF732FI	3	35	2.9	800
400	1	2.5	TO 220	BUZ60	5.5	75	1.7	2000
400	1	3	TO 220	IRF730	5.5	74	2.9	800
400	1	3	ISOWATT 220	IRF730FI	3.5	35	2.9	800
400	0.8	5.2	TO 220	IRF742	8.3	125	4	1600
400	0.8	5.2	ISOWATT 220	IRF742FI	4.5	40	4	1600
400	0.55	5.2	TO 220	IRF740	10	125	4	1600
400	0.55	5.2	ISOWATT 220	IRF740FI	5.5	40	4	1600
400	0.55	5	TO 218	SGSP475	10	150	6	2100
400	0.55	5	TO 3	SGSP575	10	150	6	2100
400	0.3	8	TO 3	IRF350	15	150	8	3000
400	0.3	8	ISOWATT 218	IRFP350FI	10	70	8	3000
400	0.075	30	ISOTOP	TSD4M350V	50	500	28	12000
450	4	1.4	TO 220	IRF823	2.2	50	1	400
450	4	1.4	ISOWATT 220	IRF823FI	1.5	30	1	400
450	3	1.4	TO 220	IRF821	2.5	50	1	400
450	3	1.4	ISOWATT 220	IRF821FI	2	30	1	400
450	3	1.2	SOT 82	SGSP230*	2.5	50	0.8	450
450	3	1.5	TO 220	SGSP330	3	75	0.8	450
450	2	2.5	TO 220	IRF833	4	74	2.7	800
450	2	2.5	ISOWATT 220	IRF833FI	2.5	35	2.7	800

\* Also available in SOT 194 package for SMD.

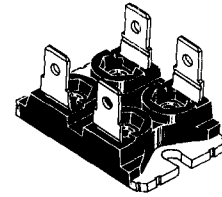
**POWER MODULES**



TO 240

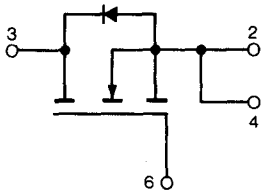


ISOTOP  
Standard version



ISOTOP :  
Faston version

Internal schematic diagram



POWER MOS IN TO 240

$V_{(BR) DSS}$ (V)	$R_{DS(on)}$ max ( $\Omega$ )	@ $I_D$ (A)	Type	$I_D$ max (A)	$P_{tot}$ (W)	$g_{fs}$ min (mho)	$C_{iss}$ max (pF)
100	0.014	50	SGS100MA010D1	120	400	20	11200
100	0.009	75	SGS150MA010D1	150	400	20	14000
500	0.20	15	SGS30MA050D1	30	400	15	9100
500	0.16	17.5	SGS35MA050D1	35	400	15	12000

POWER MOS «ISOFET» IN ISOTOP

$V_{(BR) DSS}$ (V)	$R_{DS(on)}$ max ( $\Omega$ )	@ $I_D$ (A)	Type See NOTE	$I_D$ max (A)	$P_{tot}$ (W)	$g_{fs}$ min (mho)	$C_{iss}$ max (pF)
100	0.014	70	TSD4M150V	135	500	20	11200
200	0.021	60	TSD4M250V	110	500	28	12000
350	0.075	30	TSD4M351V	50	500	28	12000
400	0.075	30	TSD4M350V	50	500	28	12000
450	0.1	28	TSD4M451V	45	500	28	12000
500	0.1	28	TSD4M450V	45	500	28	12000
1000	0.7	9	TSD5MG40V	17	500	5	6000

NOTE : FASTON VERSION - Without final «V» in the sales type.