

**POWER MOS**

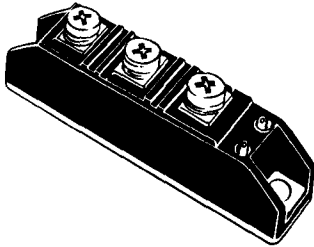
V <sub>(BR) DSS</sub> (V)	R <sub>DS (on)</sub> max (Ω)	@ I <sub>D</sub> (A)	Package	Type	I <sub>D</sub> max (A)	P <sub>tot</sub> (W)	g <sub>fs</sub> min (mho)	C <sub>iss</sub> max (pF)
450	1.5	2.5	TO 220	IRF831	4.5	74	2.7	800
450	1.5	2.5	ISOWATT 220	IRF831FI	3	35	2.7	800
450	1.5	2.5	TO 220	SGSP364	5	100	3	1000
450	1.1	4.4	TO 220	IRF843	7	125	4.9	1600
450	1.1	4.4	ISOWATT 220	IRF843FI	4	40	4.9	1600
450	0.85	4.4	TO 220	IRF841	8	125	4.9	1600
450	0.85	4.4	ISOWATT 220	IRF841FI	4.5	40	4.9	1600
450	0.7	4.5	TO 218	SGSP474	9	150	6*	2100
450	0.7	4.5	TO 3	SGSP574	9	150	6	2100
450	0.5	7	TO 3	IRF453	11	150	8.7	3000
450	0.5	7.9	TO 218	IRFP453	12	180	9.3	3000
450	0.5	7.9	ISOWATT 218	IRFP453FI	8	70	9.3	3000
450	0.4	7.2	TO 3	IRF451	13	150	8.7	3000
450	0.4	7.9	TO 218	IRFP451	14	180	9.3	3000
450	0.4	7.9	ISOWATT 218	IRFP451FI	9	70	9.3	3000
450	0.1	28	ISOTOP	TSD4M451V	45	500	28	12000
500	8.5	0.6	SOT 82	SGSP239*	1.2	40	0.65	300
500	4	1.2	TO 220	BUZ74A	2	40	0.8	500
500	4	1.4	TO 220	IRF822	2.2	50	1	400
500	4	1.4	ISOWATT 220	IRF822FI	1.5	30	1	400
500	3.8	1.4	TO 220	SGSP319	2.8	75	0.8	380
500	3	1.2	TO 220	BUZ74	2.4	40	0.8	500
500	3	1.4	TO 220	IRF820	2.5	50	1	400
500	3	1.4	ISOWATT 220	IRF820FI	2	30	1	400
500	2	2.5	TO 220	BUZ42	4	75	1.5	2000
500	2	2.5	TO 220	IRF832	4	74	2.7	800
500	2	2.5	ISOWATT 220	IRF832FI	2.5	35	2.7	800
500	1.5	2.5	TO 220	BUZ41A	4.5	75	1.5	2000
500	1.5	2.5	TO 220	IRF830	4.5	74	2.7	800
500	1.5	2.5	ISOWATT 220	IRF830FI	3	35	2.7	800
500	1.5	2.5	TO 220	SGSP369	5	100	3	1000
500	1.1	4.4	TO 220	IRF842	7	125	4.9	1600
500	1.1	4.4	ISOWATT 220	IRF842FI	4	40	4.9*	1600
500	0.85	4.4	TO 220	IRF 840	8	125	4.9	1600
500	0.85	4.4	ISOWATT 220	IRF840FI	4.5	40	4.9	1600
500	0.8	5.5	TO 218	BUZ354	8	125	2.7	4900
500	0.8	5	TO 3	BUZ45A	8.3	125	2.7	4900
500	0.7	4.5	TO 218	SGSP479	9	150	5	1900
500	0.7	4.5	TO 3	SGSP579	9	150	5	1900
500	0.6	5.5	TO 218	BUZ353	9.5	125	2.7	4900
500	0.6	5	TO 3	BUZ45	9.6	125	2.7	4900
500	0.5	7.2	TO 3	IRF452	11	150	8.7	3000
500	0.5	7.9	TO 218	IRFP452	12	180	9.3	3000
500	0.5	7.9	ISOWATT 218	IRFP452FI	8	70	9.3	3000
500	0.4	7.2	TO 3	IRF450	13	150	8.7	3000
500	0.4	7.9	TO 218	IRFP450	14	180	9.3	3000
500	0.4	7.9	ISOWATT 218	IRFP450FI	9	70	9.3	3000
500	0.2	15	TO 240	SGS30MA050D1	30	400	15	9100
500	0.16	17.5	TO 240	SGS35MA050D1	35	400	15	12000
500	0.1	28	ISOTOP	TSD4M450V	45	500	28	12000
600	2.5	1.5	TO 220	MTP3N60	3	75	1.5	1000
600	2.5	1.5	ISOWATT 220	MTP3N60FI	2.5	35	1.5	1000
600	1.2	3	ISOWATT 218	MTH6N60FI	3.5	40	2	1800
600	1.2	3	TO 220	MTP6N60	6	125	2	1800
800	2	2	TO 218	STHV82	5.5	125	2	1000
1000	3.5	2	TO 218	STHV102	4.2	125	2	1200
1000	0.7	9	ISOTOP	TSD5MG40V	17	500	5	6000

\* Also available in SOT 194 package for SMD.

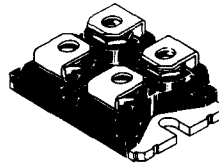
**HIMOS (IGBT)**

V <sub>(BR) DSS</sub> (V)	V <sub>DS (on)</sub> max (Ω)	@ I <sub>D</sub> (A)	Package	Type	I <sub>D</sub> max (A)	P <sub>tot</sub> (W)	g <sub>fs</sub> min (mho)	C <sub>iss</sub> max (pF)
500	2.7	7	TO 220	STHI07N50FI	7	100	2.5	950
500	2.7	7	ISOWATT 220	STHI07N50	7	35	2.5	950
500	2.7	10	TO 220	STHI10N50	10	100	2.5	950
500	2.7	10	ISOWATT 220	STHI10N50FI	10	35	2.5	950

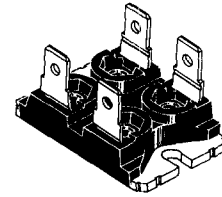
**POWER MODULES**



TO 240

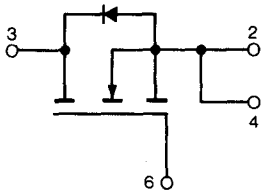


ISOTOP  
Standard version



ISOTOP :  
Faston version

Internal schematic diagram



POWER MOS IN TO 240

$V_{(BR) DSS}$ (V)	$R_{DS(on)}$ max ( $\Omega$ )	@ $I_D$ (A)	Type	$I_D$ max (A)	$P_{tot}$ (W)	$g_{fs}$ min (mho)	$C_{iss}$ max (pF)
100	0.014	50	SGS100MA010D1	120	400	20	11200
100	0.009	75	SGS150MA010D1	150	400	20	14000
500	0.20	15	SGS30MA050D1	30	400	15	9100
500	0.16	17.5	SGS35MA050D1	35	400	15	12000

POWER MOS «ISOFET» IN ISOTOP

$V_{(BR) DSS}$ (V)	$R_{DS(on)}$ max ( $\Omega$ )	@ $I_D$ (A)	Type See NOTE	$I_D$ max (A)	$P_{tot}$ (W)	$g_{fs}$ min (mho)	$C_{iss}$ max (pF)
100	0.014	70	TSD4M150V	135	500	20	11200
200	0.021	60	TSD4M250V	110	500	28	12000
350	0.075	30	TSD4M351V	50	500	28	12000
400	0.075	30	TSD4M350V	50	500	28	12000
450	0.1	28	TSD4M451V	45	500	28	12000
500	0.1	28	TSD4M450V	45	500	28	12000
1000	0.7	9	TSD5MG40V	17	500	5	6000

NOTE : FASTON VERSION - Without final «V» in the sales type.