



July 1989  
Revised March 2005

## 74ACQ245 • 74ACTQ245

### Quiet Series™ Octal Bidirectional Transceiver with 3-STATE Inputs/Outputs

#### General Description

The ACQ/ACTQ245 contains eight non-inverting bidirectional buffers with 3-STATE outputs and is intended for bus-oriented applications. Current sinking capability is 24 mA at both the A and B ports. The Transmit/Receive (T/R) input determines the direction of data flow through the bidirectional transceiver. Transmit (active-HIGH) enables data from A Ports to B Ports; Receive (active-LOW) enables data from B Ports to A Ports. The Output Enable input, when HIGH, disables both A and B ports by placing them in a HIGH Z condition.

The ACQ/ACTQ utilizes Fairchild Quiet Series™ technology to guarantee quiet output switching and improve dynamic threshold performance. FACT Quiet Series™ features GTO™ output control and undershoot corrector in addition to a split ground bus for superior performance.

#### Features

- $I_{CC}$  and  $I_{OZ}$  reduced by 50%
- Guaranteed simultaneous switching noise level and dynamic threshold performance
- Guaranteed pin-to-pin skew AC performance
- Improved latch-up immunity
- 3-STATE outputs drive bus lines or buffer memory address registers
- Outputs source/sink 24 mA
- Faster prop delays than the standard ACT245

#### Ordering Code:

| Order Number              | Package Number | Package Description   |
|---------------------------|----------------|---|
| 74ACQ245SC                | M20B           | 20-Lead Small Outline Integrated Circuit (SOIC), JEDEC MS-013, 0.300" Wide          |
| 74ACQ245SJ                | M20D           | Pb-Free 20-Lead Small Outline Package (SOP), EIAJ TYPE II, 5.3mm Wide               |
| 74ACQ245PC                | N20A           | 20-Lead Plastic Dual-In-Line Package (PDIP), JEDEC MS-001, 0.300" Wide              |
| 74ACTQ245SC               | M20B           | 20-Lead Small Outline Integrated Circuit (SOIC), JEDEC MS-013, 0.300" Wide          |
| 74ACTQ245SJ               | M20D           | Pb-Free 20-Lead Small Outline Package (SOP), EIAJ TYPE II, 5.3mm Wide               |
| 74ACTQ245QSC              | MQA20          | 20-Lead Quarter Size Outline Package (QSOP), JEDEC MO-137, 0.150" Wide              |
| 74ACTQ245MSA              | MSA20          | 20-Lead Shrink Small Outline Package (SSOP), JEDEC MO-150, 5.3mm Wide               |
| 74ACTQ245MTC              | MTC20          | 20-Lead Thin Shrink Small Outline Package (TSSOP), JEDEC MO-153, 4.4mm Wide         |
| 74ACTQ245MTCX_NL (Note 1) | MTC20          | Pb-Free 20-Lead Thin Shrink Small Outline Package (TSSOP), JEDEC MO-153, 4.4mm Wide |
| 74ACTQ245PC               | N20A           | 20-Lead Plastic Dual-In-Line Package (PDIP), JEDEC MS-001, 0.300" Wide              |

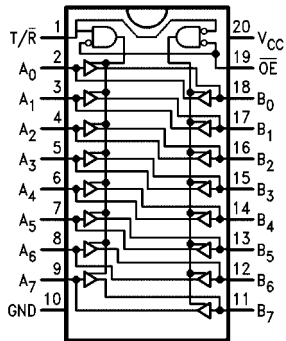
Device also available in Tape and Reel. Specify by appending suffix letter "X" to the ordering code.  
Pb-Free package per JEDEC J-STD-020B.

**Note 1:** "\_NL" indicates Pb-Free package (per JEDEC J-STD-020B). Device available in Tape and Reel only.

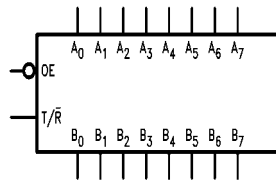
FACT™, Quiet Series™, FACT Quiet Series™, and GTO™ are trademarks of Fairchild Semiconductor Corporation.

74ACQ245 • 74ACTQ245 Quiet Series™ Octal Bidirectional Transceiver with 3-STATE Inputs/Outputs

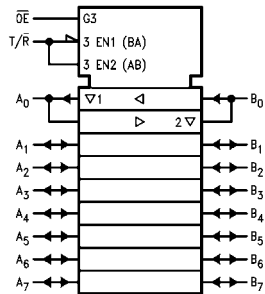
### Connection Diagram



### Logic Symbols



### IEEE/IEC



### Pin Descriptions

| Pin Names        | Description                              |
|------------------|--|
| $\overline{OE}$  | Output Enable Input                      |
| $T/\overline{R}$ | Transmit/Receive Input                   |
| $A_0$ - $A_7$    | Side A 3-STATE Inputs or 3-STATE Outputs |
| $B_0$ - $B_7$    | Side B 3-STATE Inputs or 3-STATE Outputs |

### Truth Table

| Inputs          |                  | Outputs             |
|-----------------|------------------|---------------------|
| $\overline{OE}$ | $T/\overline{R}$ |                     |
| L               | L                | Bus B Data to Bus A |
| L               | H                | Bus A Data to Bus B |
| H               | X                | HIGH-Z State        |

H = HIGH Voltage Level  
 L = LOW Voltage Level  
 X = Immaterial

**Absolute Maximum Ratings**(Note 2)

|  |                          |
|--|--------------------------|
| Supply Voltage ( $V_{CC}$ )  | -0.5V to +7.0V           |
| DC Input Diode Current ( $I_{IK}$ )                                    |                          |
| $V_I = -0.5V$  | -20 mA                   |
| $V_I = V_{CC} + 0.5V$  | +20 mA                   |
| DC Input Voltage ( $V_I$ )   | -0.5V to $V_{CC} + 0.5V$ |
| DC Output Diode Current ( $I_{OK}$ )                                   |                          |
| $V_O = -0.5V$  | -20 mA                   |
| $V_O = V_{CC} + 0.5V$  | +20 mA                   |
| DC Output Voltage ( $V_O$ )  | -0.5V to $V_{CC} + 0.5V$ |
| DC Output Source or Sink Current ( $I_O$ )                             | $\pm 50$ mA              |
| DC $V_{CC}$ or Ground Current per Output Pin ( $I_{CC}$ or $I_{GND}$ ) | $\pm 50$ mA              |
| Storage Temperature ( $T_{STG}$ )                                      | -65°C to +150°C          |
| DC Latch-Up Source or Sink Current                                     | $\pm 300$ mA             |
| Junction Temperature ( $T_J$ )   |                          |
| PDIP   | 140°C                    |

**Recommended Operating Conditions**

|   |                |
|---|----------------|
| Supply Voltage ( $V_{CC}$ )                 | 2.0V to 6.0V   |
| ACQ   | 4.5V to 5.5V   |
| ACTQ  | 0V to $V_{CC}$ |
| Input Voltage ( $V_I$ )                     | 0V to $V_{CC}$ |
| Output Voltage ( $V_O$ )                    | 0V to $V_{CC}$ |
| Operating Temperature ( $T_A$ )             | -40°C to +85°C |
| Minimum Input Edge Rate $\Delta V/\Delta t$ |                |
| ACQ Devices                                 |                |
| $V_{IN}$ from 30% to 70% of $V_{CC}$        |                |
| $V_{CC}$ @ 3.0V, 4.5V, 5.5V                 | 125 mV/ns      |
| Minimum Input Edge Rate $\Delta V/\Delta t$ |                |
| ACTQ Devices                                |                |
| $V_{IN}$ from 0.8V to 2.0V                  |                |
| $V_{CC}$ @ 4.5V, 5.5V                       | 125 mV/ns      |

**Note 2:** Absolute maximum ratings are those values beyond which damage to the device may occur. The databook specifications should be met, without exception, to ensure that the system design is reliable over its power supply, temperature, and output/input loading variables. Fairchild does not recommend operation of FACT™ circuits outside databook specifications.

**DC Electrical Characteristics for ACQ**

| Symbol               | Parameter                         | $V_{CC}$<br>(V) | $T_A = +25^\circ\text{C}$ |                   | $T_A = -40^\circ\text{C to } +85^\circ\text{C}$ |                   | Units  | Conditions  |
|----------------------|-----------------------------------|-----------------|---------------------------|-------------------|---|-------------------|--|---|
|                      |                                   |                 | Typ                       | Guaranteed Limits | Typ   | Guaranteed Limits |  |   |
| $V_{IH}$             | Minimum HIGH Level Input Voltage  | 3.0             | 1.5                       | 2.1               | 2.1   | V                 | $V_{OUT} = 0.1V$<br>or $V_{CC} - 0.1V$   |   |
|                      |                                   | 4.5             | 2.25                      | 3.15              | 3.15  |                   |  |   |
|                      |                                   | 5.5             | 2.75                      | 3.85              | 3.85  |                   |  |   |
| $V_{IL}$             | Maximum LOW Level Input Voltage   | 3.0             | 1.5                       | 0.9               | 0.9   | V                 | $V_{OUT} = 0.1V$<br>or $V_{CC} - 0.1V$   |   |
|                      |                                   | 4.5             | 2.25                      | 1.35              | 1.35  |                   |  |   |
|                      |                                   | 5.5             | 2.75                      | 1.65              | 1.65  |                   |  |   |
| $V_{OH}$             | Minimum HIGH Level Output Voltage | 3.0             | 2.99                      | 2.9               | 2.9   | V                 | $I_{OUT} = -50 \mu A$  |   |
|                      |                                   | 4.5             | 4.49                      | 4.4               | 4.4   |                   |  |   |
|                      |                                   | 5.5             | 5.49                      | 5.4               | 5.4   |                   |  |   |
|                      |                                   |                 | 3.0                       |                   | 2.56  | 2.46              | V  | $V_{IN} = V_{IL}$ or $V_{IH}$<br>$I_{OH} = -12$ mA<br>$I_{OH} = -24$ mA<br>$I_{OH} = -24$ mA (Note 3) |
|                      |                                   |                 | 4.5                       |                   | 3.86  | 3.76              |  |   |
|                      |                                   |                 | 5.5                       |                   | 4.86  | 4.76              |  |   |
| $V_{OL}$             | Maximum LOW Level Output Voltage  | 3.0             | 0.002                     | 0.1               | 0.1   | V                 | $I_{OUT} = 50 \mu A$   |   |
|                      |                                   | 4.5             | 0.001                     | 0.1               | 0.1   |                   |  |   |
|                      |                                   | 5.5             | 0.001                     | 0.1               | 0.1   |                   |  |   |
|                      |                                   | 3.0             |                           | 0.36              | 0.44  | V                 | $V_{IN} = V_{IL}$ or $V_{IH}$<br>$I_{OL} = 12$ mA<br>$I_{OL} = 24$ mA<br>$I_{OL} = 24$ mA (Note 3) |   |
|                      |                                   | 4.5             |                           | 0.36              | 0.44  |                   |  |   |
|                      |                                   | 5.5             |                           | 0.36              | 0.44  |                   |  |   |
| $I_{IN}$<br>(Note 5) | Maximum Input Leakage Current     | 5.5             |                           | $\pm 0.1$         | $\pm 1.0$                                       | $\mu A$           | $V_I = V_{CC}, GND$  |   |
| $I_{OLD}$            | Minimum Dynamic                   | 5.5             |                           |                   | 75  | mA                | $V_{OLD} = 1.65V$ Max  |   |
| $I_{OHD}$            | Output Current (Note 4)           | 5.5             |                           |                   | -75   | mA                | $V_{OHD} = 3.85V$ Min  |   |
| $I_{CC}$<br>(Note 5) | Maximum Quiescent Supply Current  | 5.5             |                           | 4.0               | 40.0  | $\mu A$           | $V_{IN} = V_{CC}$<br>or GND  |   |
| $I_{OZT}$            | Maximum I/O Leakage Current       | 5.5             |                           | $\pm 0.3$         | $\pm 3.0$                                       | $\mu A$           | $V_I$ (OE) = $V_{IL}, V_{IH}$<br>$V_I = V_{CC}, GND$<br>$V_O = V_{CC}, GND$                        |   |

| DC Electrical Characteristics for ACQ (Continued)  |   |                        |                        |                   |                                 |   |  |
|--|---|------------------------|------------------------|-------------------|---------------------------------|---|--|
| Symbol   | Parameter                                       | V <sub>CC</sub><br>(V) | T <sub>A</sub> = +25°C |                   | T <sub>A</sub> = -40°C to +85°C | Units   | Conditions   |
|  |   |                        | Typ                    | Guaranteed Limits |                                 |   |  |
| V <sub>OLP</sub>   | Quiet Output<br>Maximum Dynamic V <sub>OL</sub> | 5.0                    | 1.1                    | 1.5               |                                 | V   | Figure 1, Figure 2<br>(Note 6)(Note 7)   |
| V <sub>OLV</sub>   | Quiet Output<br>Minimum Dynamic V <sub>OL</sub> | 5.0                    | -0.6                   | -1.2              |                                 | V   | Figure 1, Figure 2<br>(Note 6)(Note 7)   |
| V <sub>IHD</sub>   | Minimum HIGH Level<br>Dynamic Input Voltage     | 5.0                    | 3.1                    | 3.5               |                                 | V   | (Note 6)(Note 8)   |
| V <sub>ILD</sub>   | Maximum LOW Level<br>Dynamic Input Voltage      | 5.0                    | 1.9                    | 1.5               |                                 | V   | (Note 6)(Note 8)   |
| <p><b>Note 3:</b> All outputs loaded; thresholds on input associated with output under test.</p> <p><b>Note 4:</b> Maximum test duration 2.0 ms, one output loaded at a time.</p> <p><b>Note 5:</b> I<sub>IN</sub> and I<sub>CC</sub> @ 3.0V are guaranteed to be less than or equal to the respective limit @ 5.5V V<sub>CC</sub>.</p> <p><b>Note 6:</b> DIP package.</p> <p><b>Note 7:</b> Max number of outputs defined as (n). Data Inputs are driven 0V to 5V; one output @ GND.</p> <p><b>Note 8:</b> Max number of Data Inputs (n) switching. (n-1) Inputs switching 0V to 5V (ACQ). Input-under-test switching: 5V to threshold (V<sub>ILD</sub>), 0V to threshold (V<sub>IHD</sub>), f = 1 MHz.</p> |   |                        |                        |                   |                                 |   |  |
| DC Electrical Characteristics for ACTQ   |   |                        |                        |                   |                                 |   |  |
| Symbol   | Parameter                                       | V <sub>CC</sub><br>(V) | T <sub>A</sub> = +25°C |                   | T <sub>A</sub> = -40°C to +85°C | Units   | Conditions   |
|  |   |                        | Typ                    | Guaranteed Limits |                                 |   |  |
| V <sub>IH</sub>  | Minimum HIGH Level<br>Input Voltage             | 4.5                    | 1.5                    | 2.0               | 2.0                             | V   | V <sub>OUT</sub> = 0.1V<br>or V <sub>CC</sub> - 0.1V   |
|  |   | 5.5                    | 1.5                    | 2.0               | 2.0                             |   |  |
| V <sub>IL</sub>  | Maximum LOW Level<br>Input Voltage              | 4.5                    | 1.5                    | 0.8               | 0.8                             | V   | V <sub>OUT</sub> = 0.1V<br>or V <sub>CC</sub> - 0.1V   |
|  |   | 5.5                    | 1.5                    | 0.8               | 0.8                             |   |  |
| V <sub>OH</sub>  | Minimum HIGH Level<br>Output Voltage            | 4.5                    | 4.49                   | 4.4               | 4.4                             | V   | I <sub>OUT</sub> = -50 μA  |
|  |   | 5.5                    | 5.49                   | 5.4               | 5.4                             |   |  |
|  | 4.5   |                        | 3.86                   | 3.76              | V                               | V <sub>IN</sub> = V <sub>IL</sub> or V <sub>IH</sub><br>I <sub>OH</sub> = -24 mA<br>I <sub>OH</sub> = -24 mA (Note 9) |  |
|  | 5.5   |                        | 4.86                   | 4.76              |                                 |   |  |
| V <sub>OL</sub>  | Maximum LOW Level<br>Output Voltage             | 4.5                    | 0.001                  | 0.1               | 0.1                             | V   | I <sub>OUT</sub> = 50 μA   |
|  |   | 5.5                    | 0.001                  | 0.1               | 0.1                             |   |  |
|  |   | 4.5                    |                        | 0.36              | 0.44                            |   |  |
| 5.5  |   | 0.36                   | 0.44                   |                   |                                 |   |  |
| I <sub>IN</sub>  | Maximum Input Leakage Current                   | 5.5                    |                        | ±0.1              | ±1.0                            | μA  | V <sub>I</sub> = V <sub>CC</sub> , GND   |
| I <sub>OZT</sub>   | Maximum 3-STATE<br>Leakage Current              | 5.5                    |                        | ±0.3              | ±3.0                            | μA  | V <sub>I</sub> = V <sub>IL</sub> , V <sub>IH</sub><br>V <sub>O</sub> = V <sub>CC</sub> , GND |
| I <sub>CCT</sub>   | Maximum I <sub>CC</sub> /Input                  | 5.5                    | 0.6                    |                   | 1.5                             | mA  | V <sub>I</sub> = V <sub>CC</sub> - 2.1V  |
| I <sub>OLD</sub>   | Minimum Dynamic                                 | 5.5                    |                        |                   | 75                              | mA  | V <sub>OLD</sub> = 1.65V Max   |
| I <sub>OHD</sub>   | Output Current (Note 10)                        | 5.5                    |                        |                   | -75                             | mA  | V <sub>OHD</sub> = 3.85V Min   |
| I <sub>CC</sub>  | Maximum Quiescent Supply Current                | 5.5                    |                        | 4.0               | 40.0                            | μA  | V <sub>IN</sub> = V <sub>CC</sub> or GND   |
| V <sub>OLP</sub>   | Quiet Output<br>Maximum Dynamic V <sub>OL</sub> | 5.0                    | 1.1                    | 1.5               |                                 | V   | Figure 1, Figure 2<br>(Note 11)(Note 12)   |
| V <sub>OLV</sub>   | Quiet Output<br>Minimum Dynamic V <sub>OL</sub> | 5.0                    | -0.6                   | -1.2              |                                 | V   | Figure 1, Figure 2<br>(Note 11)(Note 12)   |
| V <sub>IHD</sub>   | Minimum HIGH Level Dynamic Input Voltage        | 5.0                    | 1.9                    | 2.2               |                                 | V   | (Note 11)(Note 13)   |
| V <sub>ILD</sub>   | Maximum LOW Level Dynamic Input Voltage         | 5.0                    | 1.2                    | 0.8               |                                 | V   | (Note 11)(Note 13)   |
| <p><b>Note 9:</b> All outputs loaded; thresholds on input associated with output under test.</p> <p><b>Note 10:</b> Maximum test duration 2.0 ms, one output loaded at a time.</p> <p><b>Note 11:</b> DIP package.</p> <p><b>Note 12:</b> Max number of outputs defined as (n). n-1 Data Inputs are driven 0V to 3V; one output @ GND.</p> <p><b>Note 13:</b> Max number of Data Inputs (n) switching. (n-1) Inputs switching 0V to 3V (ACTQ). Input-under-test switching: 3V to threshold (V<sub>ILD</sub>), 0V to threshold (V<sub>IHD</sub>) f = 1 MHz.</p>   |   |                        |                        |                   |                                 |   |  |

### AC Electrical Characteristics for ACQ

| Symbol            | Parameter                       | V <sub>CC</sub><br>(V)<br>(Note 14) | T <sub>A</sub> = +25°C<br>C <sub>L</sub> = 50 pF |     |      | T <sub>A</sub> = -40°C to +85°C<br>C <sub>L</sub> = 50 pF |      | Units |
|-------------------|---------------------------------|-------------------------------------|--|-----|------|---|------|-------|
|                   |                                 |                                     | Min  | Typ | Max  | Min   | Max  |       |
| t <sub>PHL</sub>  | Propagation Delay               | 3.3                                 | 2.0  | 7.5 | 10.0 | 2.0   | 10.5 | ns    |
| t <sub>PLH</sub>  | Data to Output                  | 5.0                                 | 1.5  | 5.0 | 6.5  | 1.5   | 7.0  |       |
| t <sub>PZL</sub>  | Output Enable Time              | 3.3                                 | 3.0  | 8.5 | 13.0 | 3.0   | 13.5 | ns    |
| t <sub>PZH</sub>  |                                 | 5.0                                 | 2.0  | 6.0 | 8.5  | 2.0   | 9.0  |       |
| t <sub>PHZ</sub>  | Output Disable Time             | 3.3                                 | 1.0  | 8.5 | 14.5 | 1.0   | 15.0 | ns    |
| t <sub>PLZ</sub>  |                                 | 5.0                                 | 1.0  | 7.5 | 9.5  | 1.0   | 10.0 |       |
| t <sub>OSSL</sub> | Output to Output Skew (Note 15) | 3.3                                 |  | 1.0 | 1.5  |   | 1.5  | ns    |
| t <sub>OSLH</sub> | Data to Output                  | 5.0                                 |  | 0.5 | 1.0  |   | 1.0  |       |

**Note 14:** Voltage Range 5.0 is 5.0V ± 0.5V

Voltage Range 3.3 is 3.3V ± 0.3V

**Note 15:** Skew is defined as the absolute value of the difference between the actual propagation delay for any two separate outputs of the same device. The specification applies to any outputs switching in the same direction, either HIGH-to-LOW (t<sub>OSSL</sub>) or LOW-to-HIGH (t<sub>OSLH</sub>). Parameter guaranteed by design.

### AC Electrical Characteristics for ACTQ

| Symbol                              | Parameter                       | V <sub>CC</sub><br>(V)<br>(Note 16) | T <sub>A</sub> = +25°C<br>C <sub>L</sub> = 50 pF |     |      | T <sub>A</sub> = -40°C to +85°C<br>C <sub>L</sub> = 50 pF |      | Units |
|-------------------------------------|---------------------------------|-------------------------------------|--|-----|------|---|------|-------|
|                                     |                                 |                                     | Min  | Typ | Max  | Min   | Max  |       |
| t <sub>PHL</sub>                    | Propagation Delay               | 5.0                                 | 1.5  | 5.5 | 7.0  | 1.5   | 7.5  | ns    |
| t <sub>PLH</sub>                    | Data to Output                  |                                     |  |     |      |   |      |       |
| t <sub>PZL</sub> , t <sub>PZH</sub> | Output Enable Time              | 5.0                                 | 2.0  | 7.0 | 9.0  | 2.0   | 9.5  | ns    |
| t <sub>PHZ</sub> , t <sub>PLZ</sub> | Output Disable Time             | 5.0                                 | 1.0  | 8.0 | 10.0 | 1.0   | 10.5 | ns    |
| t <sub>OSSL</sub>                   | Output to Output Skew (Note 17) | 5.0                                 |  | 0.5 | 1.0  |   | 1.0  | ns    |
| t <sub>OSLH</sub>                   | Data to Output                  |                                     |  |     |      |   |      |       |

**Note 16:** Voltage Range 5.0 is 5.0V ± 0.5V

**Note 17:** Skew is defined as the absolute value of the difference between the actual propagation delay for any two separate outputs of the same device. The specification applies to any outputs switching in the same direction, either HIGH-to-LOW (t<sub>OSSL</sub>) or LOW-to-HIGH (t<sub>OSLH</sub>). Parameter guaranteed by design.

### Capacitance

| Symbol          | Parameter                     | Typ  | Units | Conditions             |
|-----------------|-------------------------------|------|-------|------------------------|
| C <sub>IN</sub> | Input Capacitance             | 4.5  | pF    | V <sub>CC</sub> = OPEN |
| C <sub>IO</sub> | Input/Output Capacitance      | 15   | pF    | V <sub>CC</sub> = 5.0V |
| C <sub>PD</sub> | Power Dissipation Capacitance | 80.0 | pF    | V <sub>CC</sub> = 5.0V |

## FACT Noise Characteristics

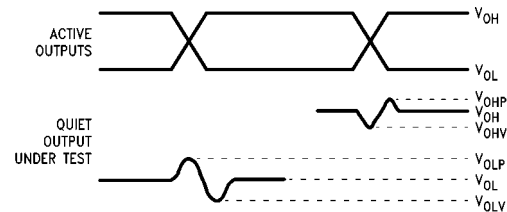
The setup of a noise characteristics measurement is critical to the accuracy and repeatability of the tests. The following is a brief description of the setup used to measure the noise characteristics of FACT.

### Equipment:

Hewlett Packard Model 8180A Word Generator  
PC-163A Test Fixture  
Tektronics Model 7854 Oscilloscope

### Procedure:

1. Verify Test Fixture Loading: Standard Load 50 pF, 500Ω.
2. Deskew the HFS generator so that no two channels have greater than 150 ps skew between them. This requires that the oscilloscope be deskewed first. It is important to deskew the HFS generator channels before testing. This will ensure that the outputs switch simultaneously.
3. Terminate all inputs and outputs to ensure proper loading of the outputs and that the input levels are at the correct voltage.
4. Set the HFS generator to toggle all but one output at a frequency of 1 MHz. Greater frequencies will increase DUT heating and effect the results of the measurement.
5. Set the HFS generator input levels at 0V LOW and 3V HIGH for ACT devices and 0V LOW and 5V HIGH for AC devices. Verify levels with an oscilloscope.



**FIGURE 1. Quiet Output Noise Voltage Waveforms**

**Note 18:**  $V_{OHV}$  and  $V_{OLP}$  are measured with respect to ground reference.

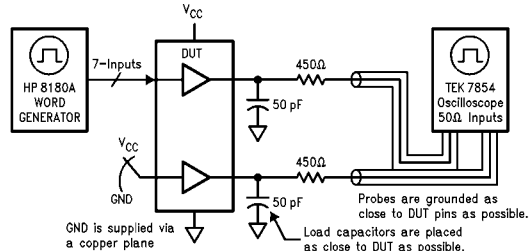
**Note 19:** Input pulses have the following characteristics:  $f = 1$  MHz,  $t_r = 3$  ns,  $t_f = 3$  ns, skew  $< 150$  ps.

$V_{OLP}/V_{OLV}$  and  $V_{OHP}/V_{OHV}$ :

- Determine the quiet output pin that demonstrates the greatest noise levels. The worst case pin will usually be the furthest from the ground pin. Monitor the output voltages using a 50Ω coaxial cable plugged into a standard SMB type connector on the test fixture. Do not use an active FET probe.
- Measure  $V_{OLP}$  and  $V_{OLV}$  on the quiet output during the worst case transition for active and enable. Measure  $V_{OHP}$  and  $V_{OHV}$  on the quiet output during the worst case active and enable transition.
- Verify that the GND reference recorded on the oscilloscope has not drifted to ensure the accuracy and repeatability of the measurements.

$V_{ILD}$  and  $V_{IHD}$ :

- Monitor one of the switching outputs using a 50Ω coaxial cable plugged into a standard SMB type connector on the test fixture. Do not use an active FET probe.
- First increase the input LOW voltage level,  $V_{IL}$ , until the output begins to oscillate or steps out a min of 2 ns. Oscillation is defined as noise on the output LOW level that exceeds  $V_{IL}$  limits, or on output HIGH levels that exceed  $V_{IH}$  limits. The input LOW voltage level at which oscillation occurs is defined as  $V_{ILD}$ .
- Next decrease the input HIGH voltage level,  $V_{IH}$ , until the output begins to oscillate or steps out a min of 2 ns. Oscillation is defined as noise on the output LOW level that exceeds  $V_{IL}$  limits, or on output HIGH levels that exceed  $V_{IH}$  limits. The input HIGH voltage level at which oscillation occurs is defined as  $V_{IHD}$ .
- Verify that the GND reference recorded on the oscilloscope has not drifted to ensure the accuracy and repeatability of the measurements.



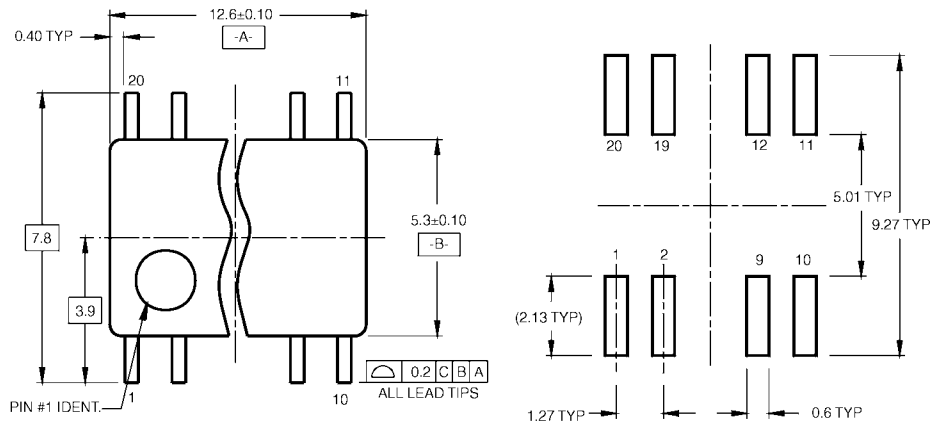
**FIGURE 2. Simultaneous Switching Test Circuit**

**Physical Dimensions** inches (millimeters) unless otherwise noted

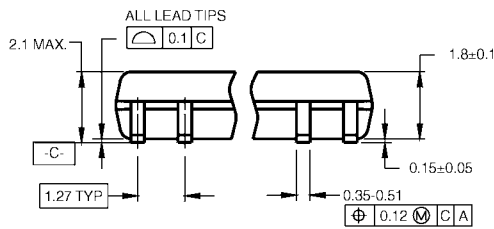


**20-Lead Small Outline Integrated Circuit (SOIC), JEDEC MS-013, 0.300" Wide  
Package Number M20B**

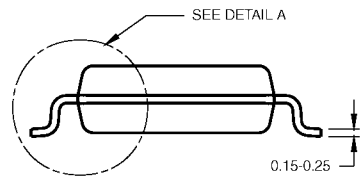
**Physical Dimensions** inches (millimeters) unless otherwise noted (Continued)



LAND PATTERN RECOMMENDATION

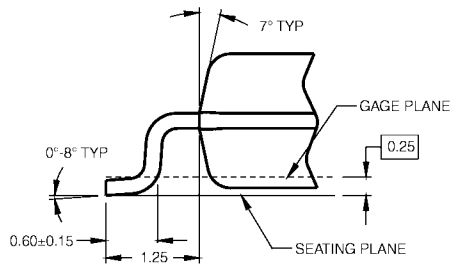


DIMENSIONS ARE IN MILLIMETERS



- NOTES:
- A. CONFORMS TO EIAJ EDR-7320 REGISTRATION, ESTABLISHED IN DECEMBER, 1998.
  - B. DIMENSIONS ARE IN MILLIMETERS.
  - C. DIMENSIONS ARE EXCLUSIVE OF BURRS, MOLD FLASH, AND TIE BAR EXTRUSIONS.

M20DRevB1

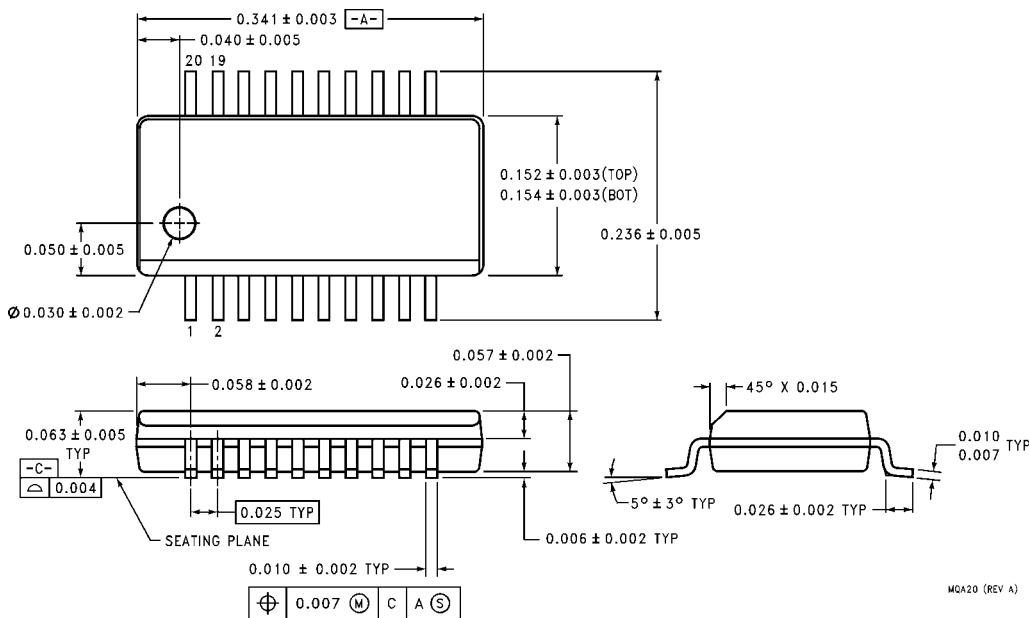


DETAIL A

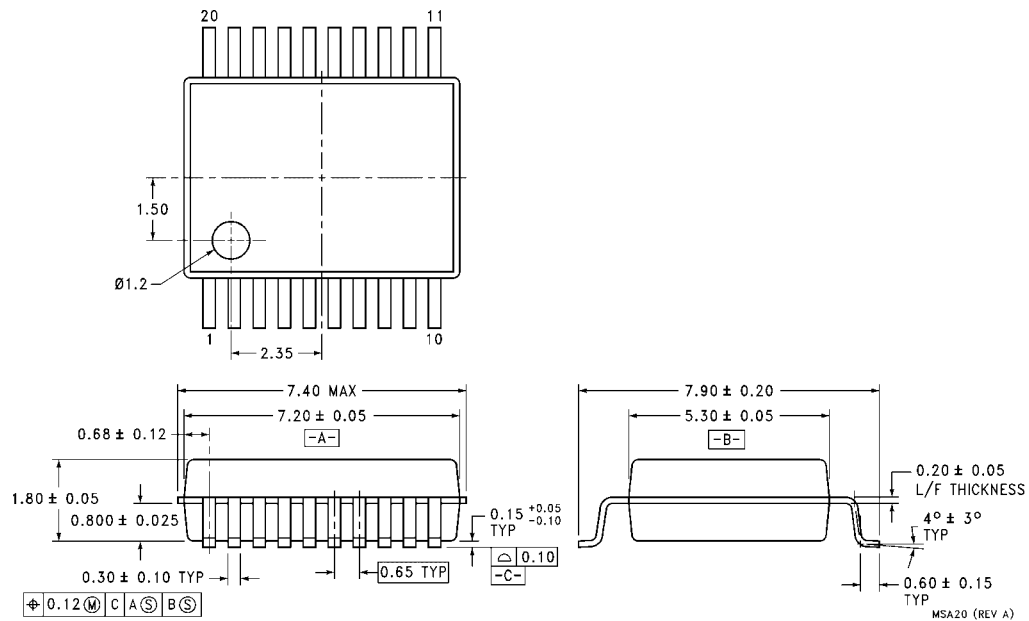
**Pb-Free 20-Lead Small Outline Package (SOP), EIAJ TYPE II, 5.3mm Wide Package Number M20D**



**Physical Dimensions** inches (millimeters) unless otherwise noted (Continued)

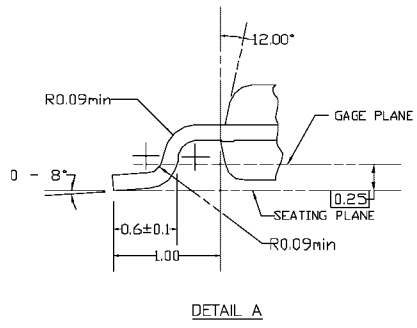
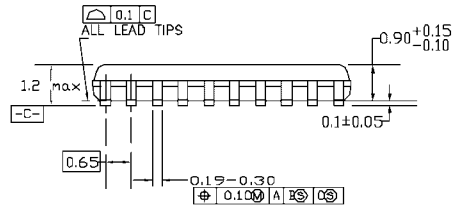
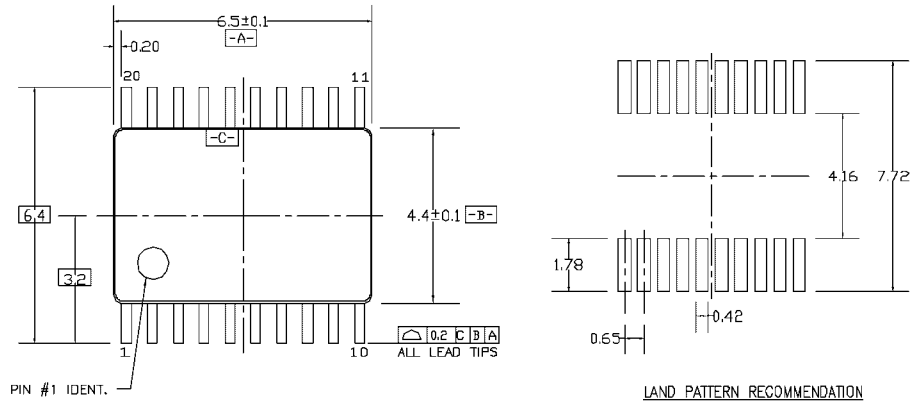


**20-Lead Quarter Size Outline Package (QSOP), JEDEC MO-137, 0.150" Wide  
Package Number MQA20**



**20-Lead Shrink Small Outline Package (SSOP), JEDEC MO-150, 5.3mm Wide  
Package Number MSA20**

**Physical Dimensions** inches (millimeters) unless otherwise noted (Continued)



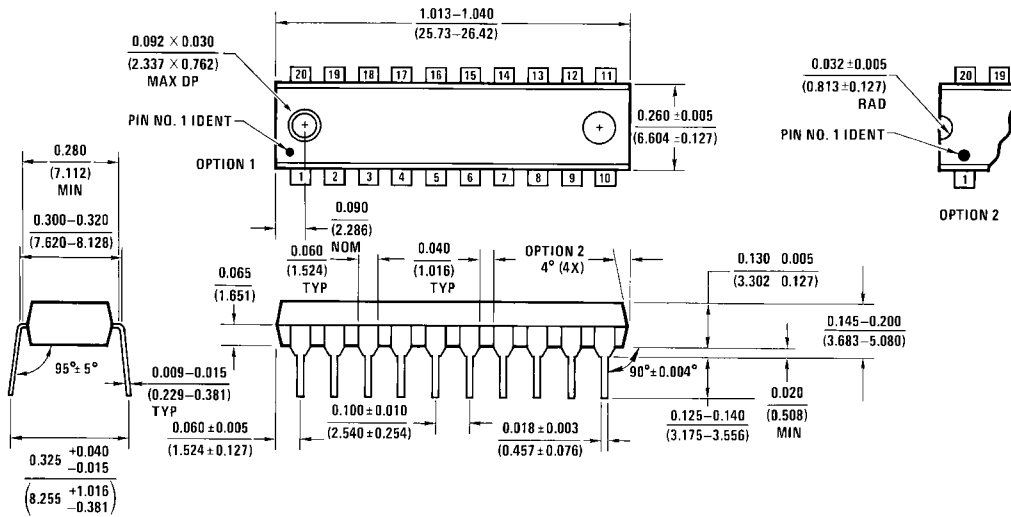
DIMENSIONS ARE IN MILLIMETERS

- NOTES:
- A. CONFORMS TO JEDEC REGISTRATION MO-153, VARIATION AC, REF NOTE 6, DATE 7/93.
  - B. DIMENSIONS ARE IN MILLIMETERS.
  - C. DIMENSIONS ARE EXCLUSIVE OF BURRS, MOLDS FLASH, AND TIE BAR EXTRUSIONS.
  - D. DIMENSIONS AND TOLERANCES PER ANSI Y14.5M, 1982.

MTC20REV D1

**20-Lead Thin Shrink Small Outline Package (TSSOP), JEDEC MO-153, 4.4mm Wide Package Number MTC20**

**Physical Dimensions** inches (millimeters) unless otherwise noted (Continued)



**20-Lead Plastic Dual-In-Line Package (PDIP), JEDEC MS-001, 0.300" Wide  
Package Number N20A**

Fairchild does not assume any responsibility for use of any circuitry described, no circuit patent licenses are implied and Fairchild reserves the right at any time without notice to change said circuitry and specifications.

**LIFE SUPPORT POLICY**

FAIRCHILD'S PRODUCTS ARE NOT AUTHORIZED FOR USE AS CRITICAL COMPONENTS IN LIFE SUPPORT DEVICES OR SYSTEMS WITHOUT THE EXPRESS WRITTEN APPROVAL OF THE PRESIDENT OF FAIRCHILD SEMICONDUCTOR CORPORATION. As used herein:

1. Life support devices or systems are devices or systems which, (a) are intended for surgical implant into the body, or (b) support or sustain life, and (c) whose failure to perform when properly used in accordance with instructions for use provided in the labeling, can be reasonably expected to result in a significant injury to the user.
2. A critical component in any component of a life support device or system whose failure to perform can be reasonably expected to cause the failure of the life support device or system, or to affect its safety or effectiveness.

[www.fairchildsemi.com](http://www.fairchildsemi.com)