

FEATURES

Laser Trimmed to High Accuracy:

5.000V \pm 2.0mV (M Grade)

Trimmed Temperature Coefficient:

2ppm/ $^{\circ}$ C max, 0 to $+70^{\circ}$ C (M Grade)

10ppm/ $^{\circ}$ C max, -55° C to $+125^{\circ}$ C (T Grade)

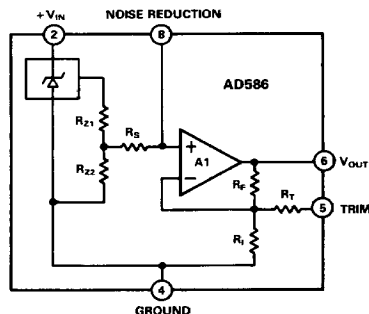
Noise Reduction Capability

Low Quiescent Current: 3mA max

Output Trim Capability

MIL-STD-883 Compliant Versions Available

FUNCTIONAL BLOCK DIAGRAM



NOTE: PINS 1, 3 & 7 ARE INTERNAL TEST POINTS.
MAKE NO CONNECTIONS TO THESE POINTS.

PRODUCT DESCRIPTION

The AD586 represents a major advance in the state-of-the-art in monolithic voltage references. Using a proprietary ion-implanted buried Zener diode and laser wafer trimming of high stability thin-film resistors, the AD586 provides outstanding performance at low cost.

The AD586 offers much higher performance than most other 5V references. Because the AD586 uses an industry standard pinout, many systems can be upgraded instantly with the AD586. The buried Zener approach to reference design provides lower noise and drift than bandgap voltage references. The AD586 offers a noise reduction pin which can be used to further reduce the noise level generated by the buried Zener.

The AD586 is recommended for use as a reference for 8-, 10-, 12-, 14- or 16-bit D/A converters which require an external precision reference. The device is also ideal for successive approximation or integrating A/D converters with up to 14 bits of accuracy and, in general, can offer better performance than the standard on-chip references.

The AD586J, K, L and M are specified for operation from 0 to $+70^{\circ}$ C, and the AD586S and T are specified for -55° C to $+125^{\circ}$ C operation. All grades, except for the AD586M, are packaged in an 8-pin cerdip package. The AD586J, K, L and M are available in an 8-pin plastic package. The AD586J and the AD586K are also available in an 8-pin plastic surface mount small outline (SO) package.

PRODUCT HIGHLIGHTS

1. Laser trimming of both initial accuracy and temperature coefficients results in very low errors over temperature without the use of external components. The AD586M has a maximum deviation from 5.000V of ± 2.45 mV between 0 and $+70^{\circ}$ C, and the AD586T guarantees ± 7.5 mV maximum total error between -55° C and $+125^{\circ}$ C.
2. For applications requiring higher precision, an optional fine-trim connection is provided.
3. Any system using an industry standard pinout reference can be upgraded instantly with the AD586.
4. Output noise of the AD586 is very low, typically 4 μ V p-p. A noise reduction pin is provided for additional noise filtering using an external capacitor.
5. The AD586 is available in versions compliant with MIL-STD-883. Refer to the Analog Devices Military Products Databook or current AD586/883B data sheet for detailed specifications.

AD586—SPECIFICATIONS ($T_A = +25^\circ\text{C}$, $V_{IN} = +15\text{V}$ unless otherwise specified)

Model	AD586J			AD586K			AD586L			AD586M			AD586S			AD586T			Units
	Min	Typ	Max	Min	Typ	Max	Min	Typ	Max	Min	Typ	Max	Min	Typ	Max	Min	Typ	Max	
Output Voltage	4.990		5.020	4.995		5.005	4.9975		5.0025	4.998		5.002	4.990		5.010	4.9975		5.0025	V
Output Voltage Drift ¹ 0 to $+70^\circ\text{C}$ -55°C to $+125^\circ\text{C}$		25			15			5			2			20			10		ppm/ $^\circ\text{C}$
Gain Adjustment	+6		-2	+6		-2	+6		-2	+6		-2	+6		-2	+6		-2	%
Line Regulation ¹ 10.8V < V_{IN} < 36V T_{\min} to T_{\max} 11.4V < V_{IN} < 36V T_{\min} to T_{\max}			100			100			100			100			150			150	$\pm \mu\text{V/V}$
Load Regulation ¹ Sourcing $0 < I_{OUT} < 10\text{mA}$ 25 $^\circ\text{C}$ T_{\min} to T_{\max} Sinking $-10 < I_{OUT} < 0\text{mA}$ 25 $^\circ\text{C}$			100			100			100			100			150			150	$\mu\text{V/mA}$
			100			100			100			100			150			150	
			400			400			400			400			400			400	
Quiescent Current	2	3		2	3		2	3		2	3		2	3		2	3		mA
Power Consumption	30			30			30			30			30			30			mW
Output Noise 0.1Hz to 10Hz Spectral Density, 100Hz	4			4			4			4			4			4			$\mu\text{V p-p}$ $\text{nV}/\sqrt{\text{Hz}}$
Long-Term Stability	15			15			15			15			15			15			ppm/1000Hr
Short-Circuit Current-to-Ground	45	60		45	60		45	60		45	60		45	60		45	60		mA
Temperature Range Specified Performance	0		+70	0		+70	0		+70	0		+70	-55		+125	-55		+125	$^\circ\text{C}$
Operating Performance ²	-40		+85	-40		+85	-40		+85	-40		+85	-55		+125	-55		+125	

NOTES

¹Maximum output voltage drift is guaranteed for all packages and grades. Cerdip packaged parts are also 100% production tested.

²The operating temperature range is defined as the temperatures extremes at which the device will still function. Parts may deviate from their specified performance outside their specified temperature range.

Specifications subject to change without notice.

Specifications in boldface are tested on all production units at final electrical test. Result from those tests are used to calculate outgoing quality levels. All min and max specifications are guaranteed, although only those shown in boldface are tested on all production units unless otherwise specified.

ABSOLUTE MAXIMUM RATINGS*

V_{IN} to Ground 36V

Power Dissipation (25 $^\circ\text{C}$) 500mW

Storage Temperature -65 $^\circ\text{C}$ to +150 $^\circ\text{C}$

Lead Temp (Soldering, 10sec) 300 $^\circ\text{C}$

Package Thermal Resistance

θ_{JC} 22 $^\circ\text{C/W}$

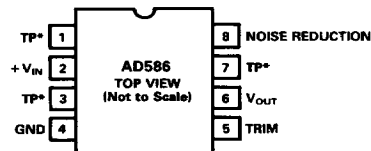
θ_{JA} 110 $^\circ\text{C/W}$

Output Protection: Output safe for indefinite short to ground or

V_{IN} .

*Stresses above those listed under "Absolute Maximum Ratings" may cause permanent damage to the device. This is a stress rating only and functional operation of the device at these or any other conditions above those indicated in the operational sections of this specification is not implied. Exposure to absolute maximum rating conditions for extended periods may affect device reliability.

CONNECTION DIAGRAM (Top View)

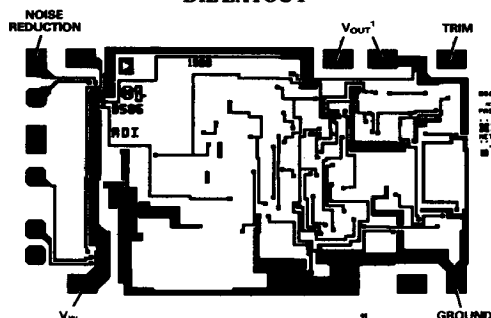


*TP DENOTES FACTORY TEST POINT.
NO CONNECTIONS SHOULD BE MADE TO THESE PINS.

DIE SPECIFICATIONS The following specifications are tested at the die level for AD586JCHIPS. These die are probed at 25°C only. $(T_A = +25^\circ\text{C}, V_{IN} = +15\text{V unless otherwise specified})$

Parameter	AD586JCHIPS			Units
	Min	Typ	Max	
Output Voltage	4.980		5.020	V
Gain Adjustment	+6 -2			% %
Line Regulation $10.8\text{V} < V_{IN} < 36\text{V}$			100	$\pm \mu\text{V/V}$
Load Regulation Sourcing $0 < I_{OUT} < 10\text{mA}$ Sinking $-10 < I_{OUT} < 0\text{mA}$			100 400	$\mu\text{V/mA}$ $\mu\text{V/mA}$
Quiescent Current			3	mA
Short-Circuit Current-to-Ground			60	mA

DIE LAYOUT

Die Size: 0.96×0.061 inches

NOTES

¹Both V_{OUT} pads should be connected to the output.**Die Thickness:** The standard thickness of Analog Devices Bipolar dice is 24 mils \pm 2 mils.**Die Dimensions:** The dimensions given have a tolerance of \pm 2 mils.**Backing:** The standard backside surface is silicon (not plated). Analog Devices does not recommend gold-backed dice for most applications.**Edges:** A diamond saw is used to separate wafers into dice thus providing perpendicular edges half-way through the die.

In contrast to scribed dice, this technique provides a more uniform die shape and size. The perpendicular edges facilitate handling (such as tweezer pick-up) while the uniform shape and size simplifies substrate design and die attach.

Top Surface: The standard top surface of the die is covered by a layer of glassivation. All areas are covered except bonding pads and scribe lines.**Surface Metalization:** The metalization to Analog Devices bipolar dice is aluminum. Minimum thickness is 10,000 Å.**Bonding Pads:** All bonding pads have a minimum size of 4 mils by 4 mils. The passivation windows have 3.5 mils by 3.5 mils minimum.

ORDERING GUIDE

Model ¹	Initial Error mV	Temp. Coefficient ppm/°C	Temp. Range °C	Package Option ²
AD586JN	20	25	0 to +70	N-8
AD586JQ	20	25	0 to +70	Q-8
AD586JR	20	25	0 to +70	R-8
AD586KN	5	15	0 to +70	N-8
AD586KQ	5	15	0 to +70	Q-8
AD586KR	5	15	0 to +70	R-8
AD586LN	2.5	5	0 to +70	N-8
AD586MN	2	2	0 to +70	N-8
AD586LQ	2.5	5	0 to +70	Q-8
AD586SQ	10	20	-55 to +125	Q-8
AD586TQ	2.5	10	-55 to +125	Q-8
AD586JCHIPS	20	25	0 to +70	-

NOTES

¹For details on grade and package offerings screened in accordance with MIL-STD-883, refer to the Analog Devices Military Products Databook or current AD586/883B data sheet.²N = Plastic DIP; Q = Cerdip; R = Small Outline IC (SOIC). For outline information see Package Information section.

AD586

THEORY OF OPERATION

The AD586 consists of a proprietary buried Zener diode reference, an amplifier to buffer the output and several high stability thin-film resistors as shown in the block diagram in Figure 1. This design results in a high precision monolithic 5V output reference with initial offset of 2.5mV or less. The temperature compensation circuitry provides the device with a temperature coefficient of under 5 ppm/°C.

Using the bias compensation resistor between the Zener output and the noninverting input to the amplifier, a capacitor can be added at the NOISE REDUCTION pin (Pin 8) to form a low pass filter and reduce the noise contribution of the Zener to the circuit.

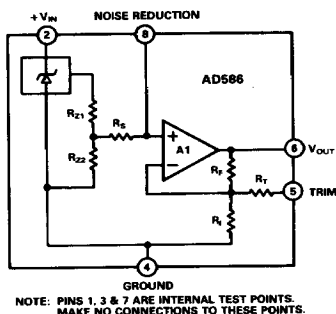


Figure 1. AD586 Functional Block Diagram

APPLYING THE AD586

The AD586 is simple to use in virtually all precision reference applications. When power is applied to Pin 2 and Pin 4 is grounded, Pin 6 provides a 5V output. No external components are required; the degree of desired absolute accuracy is achieved simply by selecting the required device grade. The AD586 requires less than 3mA quiescent current from an operating supply of +12V or +15V.

An external fine trim may be desired to set the output level to exactly 5.000V (calibrated to a main system reference). System calibration may also require a reference voltage that is slightly different from 5.000V, for example, 5.12V for binary applications. In either case, the optional trim circuit shown in Figure 2 can offset the output by as much as 300mV, if desired, with minimal effect on other device characteristics.

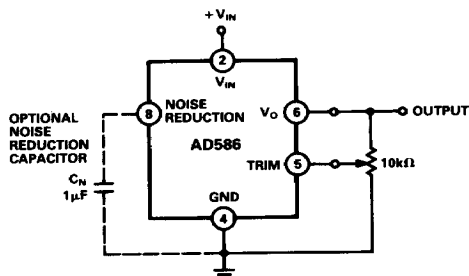


Figure 2. Optional Fine Trim Configuration

NOISE PERFORMANCE AND REDUCTION

The noise generated by the AD586 is typically less than 4μV p-p over the 0.1Hz to 10Hz band. Noise in a 1MHz bandwidth is approximately 200μV p-p. The dominant source of this noise is the buried Zener which contributes approximately 100nV/√Hz. In comparison, the op amp's contribution is negligible. Figure 3 shows the 0.1Hz to 10Hz noise of a typical AD586. The noise measurement is made with a bandpass filter made of a 1-pole high-pass filter with a corner frequency at 0.1Hz and a 2-pole low-pass filter with a corner frequency at 12.6Hz to create a filter with a 9.922Hz bandwidth.

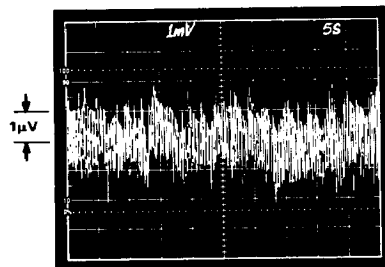


Figure 3. 0.1Hz to 10Hz Noise

If further noise reduction is desired, an external capacitor may be added between the NOISE REDUCTION pin and ground as shown in Figure 2. This capacitor, combined with the 4kΩ R_S and the Zener resistances form a low-pass filter on the output of the Zener cell. A 1μF capacitor will have a 3dB point at 12Hz, and it will reduce the high-frequency (to 1MHz) noise to about 160μV p-p. Figure 4 shows the 1MHz noise of a typical AD586 both with and without a 1μF capacitor.

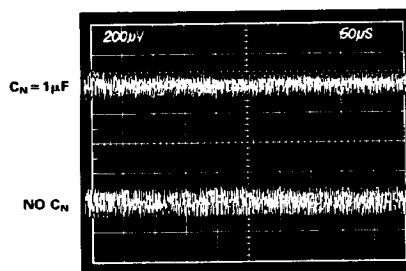
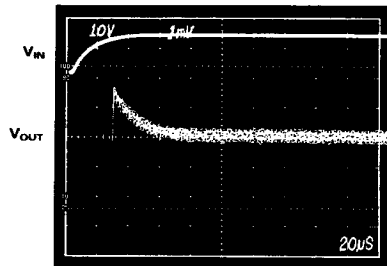


Figure 4. Effect of 1μF Noise Reduction Capacitor on Broadband Noise

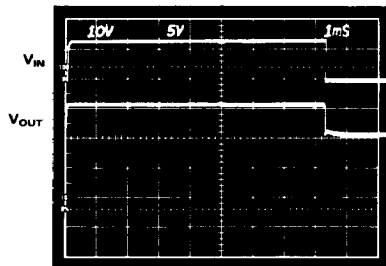
TURN-ON TIME

Upon application of power (cold start), the time required for the output voltage to reach its final value within a specified error band is defined as the turn-on settling time. Two components normally associated with this are: the time for the active circuits to settle, and the time for the thermal gradients on the chip to stabilize. Figure 5 shows the turn-on characteristics of the AD586. It shows the settling to be about 60μsec to 0.01%. Note the absence of any thermal tails when the horizontal scale is expanded to 1ms/cm in Figure 5b.

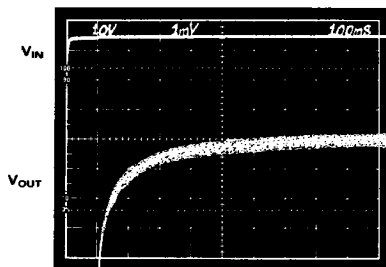
Output turn-on time is modified when an external noise reduction capacitor is used. When present, this capacitor acts as an additional load to the internal Zener diode's current source, resulting in a somewhat longer turn-on time. In the case of a $1\mu\text{F}$ capacitor, the initial turn-on time is approximately 400ms to 0.01% (see Figure 5c).



a. Electrical Turn-On



b. Extended Time Scale



c. Turn-On with $1\mu\text{F } C_N$

Figure 5. Turn-On Characteristics

DYNAMIC PERFORMANCE

The output buffer amplifier is designed to provide the AD586 with static and dynamic load regulation superior to less complete references.

Many A/D and D/A converters present transient current loads to the reference, and poor reference response can degrade the converter's performance.

Figure 6 displays the characteristics of the AD586 output amplifier driving a 0 to 10mA load.

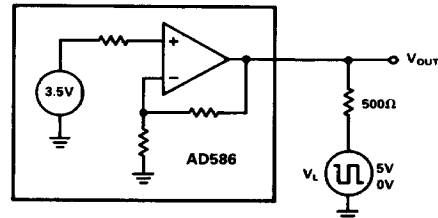


Figure 6a. Transient Load Test Circuit

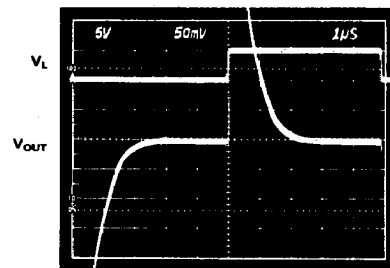


Figure 6b. Large-Scale Transient Response

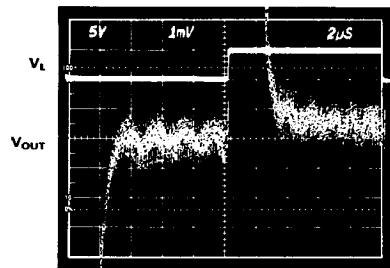


Figure 6c. Fine-Scale Settling for Transient Load

AD586

In some applications, a varying load may be both resistive and capacitive in nature, or the load may be connected to the AD586 by a long capacitive cable.

Figure 7 displays the output amplifier characteristics driving a 1000pF, 0 to 10mA load.

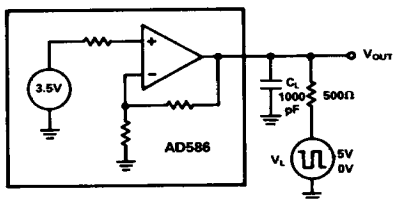


Figure 7a. Capacitive Load Transient Response Test Circuit

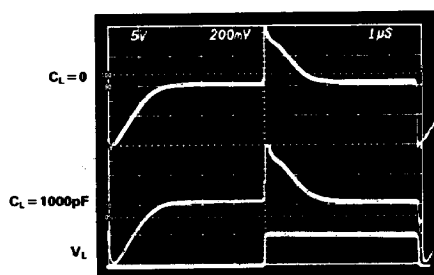


Figure 7b. Output Response with Capacitive Load

LOAD REGULATION

The AD586 has excellent load regulation characteristics. Figure 8 shows that varying the load several mA changes the output by a few μ V. The AD586 has somewhat better load regulation performance sourcing current than sinking current.

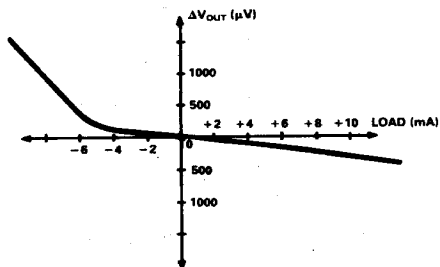


Figure 8. Typical Load Regulation Characteristics

TEMPERATURE PERFORMANCE

The AD586 is designed for precision reference applications where temperature performance is critical. Extensive temperature testing ensures that the device's high level of performance is maintained over the operating temperature range.

Some confusion exists in the area of defining and specifying reference voltage error over temperature. Historically, references have been characterized using a maximum deviation per degree Centigrade; i.e., ppm/ $^{\circ}$ C. However, because of nonlinearities in temperature characteristics which originated in standard Zener references (such as "S" type characteristics), most manufacturers have begun to use a maximum limit error band approach to specify devices. This technique involves the measurement of the output at three or more different temperatures to specify an output voltage error band.

Figure 9 shows the typical output voltage drift for the AD586L and illustrates the test methodology. The box in Figure 9 is bounded on the sides by the operating temperature extremes, and on the top and the bottom by the maximum and minimum output voltages measured over the operating temperature range. The slope of the diagonal drawn from the lower left to the upper right corner of the box determines the performance grade of the device.

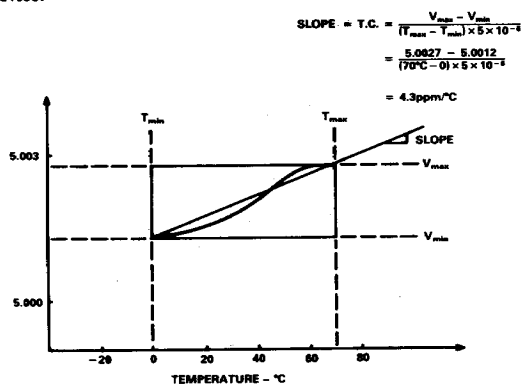


Figure 9. Typical AD586L Temperature Drift

Each AD586JQ, KQ and LQ grade unit is tested at 0, +25 $^{\circ}$ C and +70 $^{\circ}$ C. Each AD586SQ and TQ grade unit is tested at -55 $^{\circ}$ C, +25 $^{\circ}$ C and +125 $^{\circ}$ C. This approach ensures that the variations of output voltage that occur as the temperature changes within the specified range will be contained within a box whose diagonal has a slope equal to the maximum specified drift. The position of the box on the vertical scale will change from device to device as initial error and the shape of the curve vary. The maximum height of the box for the appropriate temperature range and device grade is shown in Figure 10. Duplication of these results requires a combination of high accuracy and stable temperature control in a test system. Evaluation of the AD586 will produce a curve similar to that in Figure 9, but output readings may vary depending on the test methods and equipment utilized.

DEVICE GRADE	MAXIMUM OUTPUT CHANGE (mV)	
	0 TO +70 $^{\circ}$ C	-55 $^{\circ}$ C TO +125 $^{\circ}$ C
AD586J	8.75	
AD586K	5.25	
AD586L	1.75	
AD586M	0.70	
AD586S		18.00
AD586T		9.00

Figure 10. Maximum Output Change in mV

NEGATIVE REFERENCE VOLTAGE FROM AN AD586

The AD586 can be used to provide a precision -5.000V output as shown in Figure 11. The V_{IN} pin is tied to at least a $+6\text{V}$ supply, the output pin is grounded, and the AD586 ground pin is connected through a resistor, R_S , to a -15V supply. The -5V output is now taken from the ground pin (Pin 4) instead of V_{OUT} . It is essential to arrange the output load and the supply resistor R_S so that the net current through the AD586 is between 2.5mA and 10.0mA . The temperature characteristics and long-term stability of the device will be essentially the same as that of a unit used in the standard $+5\text{V}$ output configuration.

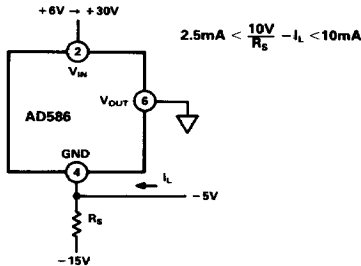


Figure 11. AD586 as a Negative 5V Reference

USING THE AD586 WITH CONVERTERS

The AD586 is an ideal reference for a wide variety of 8-, 12-, 14- and 16-bit A/D and D/A converters. Several representative examples follow.

5V REFERENCE WITH MULTIPLYING CMOS D/A OR A/D CONVERTERS

The AD586 is ideal for applications with 10- and 12-bit multiplying CMOS D/A converters. In the standard hookup, as shown in Figure 12, the AD586 is paired with the AD7545 12-bit multiplying DAC and the AD711 high-speed BiFET Op Amp. The amplifier DAC configuration produces a unipolar 0 to -5V output range. Bipolar output applications and other operating details can be found on the individual product data sheets.

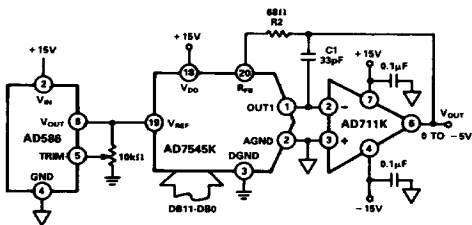


Figure 12. Low-Power 12-Bit CMOS DAC Application

The AD586 can also be used as a precision reference for multiple DACs. Figure 13 shows the AD586, the AD7628 dual DAC and the AD712 dual op amp hooked up for single supply operation

to produce 0 to -5V outputs. Because both DACs are on the same die and share a common reference and output op amps, the DAC outputs will exhibit similar gain TCs.

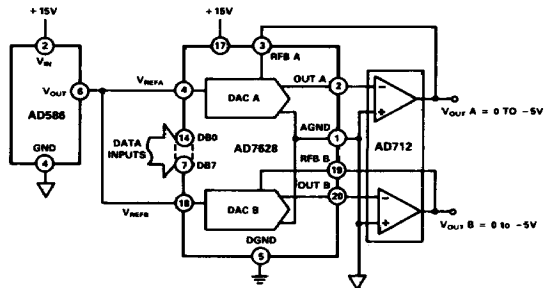


Figure 13. AD586 as a 5V Reference for a CMOS Dual DAC

STACKED PRECISION REFERENCES FOR MULTIPLE VOLTAGES

Often, a design requires several reference voltages. Three AD586s can be stacked, as shown in Figure 14, to produce $+5.000\text{V}$, $+10.000\text{V}$, and $+15.000\text{V}$ outputs. This scheme can be extended to any number of AD586s as long as the maximum load current is not exceeded. This design provides the additional advantage of improved line regulation on the $+5.0\text{V}$ output. Changes in V_{IN} of $+18\text{V}$ to $+50\text{V}$ produces an output change that is below the noise level of the references.

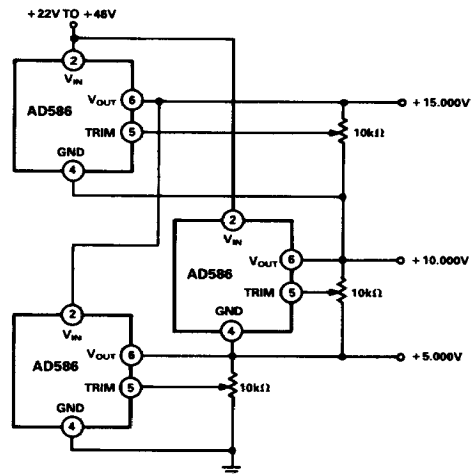


Figure 14. Multiple AD586s Stacked for Precision 5V, 10V and 15V Outputs

AD586

PRECISION CURRENT SOURCE

The design of the AD586 allows it to be easily configured as a current source. By choosing the control resistor R_C in Figure 15, you can vary the load current from the quiescent current (2mA typically) to approximately 10mA. The compliance voltage of this circuit varies from about +5V to +21V depending upon the value of V_{IN} .

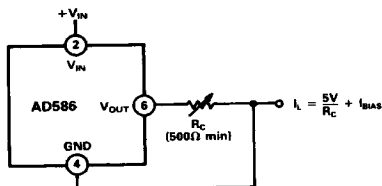


Figure 15. Precision Current Source

PRECISION HIGH CURRENT SUPPLY

For higher currents, the AD586 can easily be connected to a power PNP or power Darlington PNP device. The circuit in Figure 16 can deliver up to 4 amps to the load. The 0.1μF capacitor is required only if the load has a significant capacitive component. If the load is purely resistive, improved high-frequency supply rejection results can be obtained by removing the capacitor.

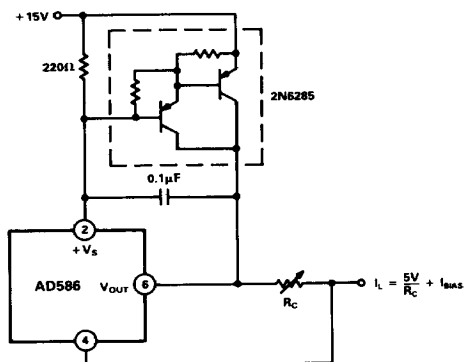


Figure 16a. Precision High-Current Current Source

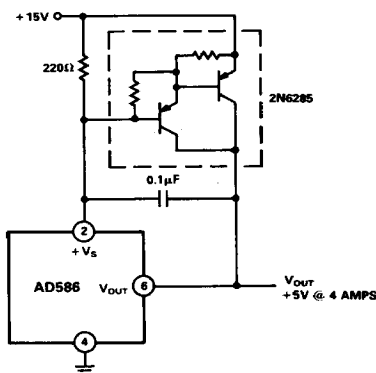


Figure 16b. Precision High-Current Voltage Source