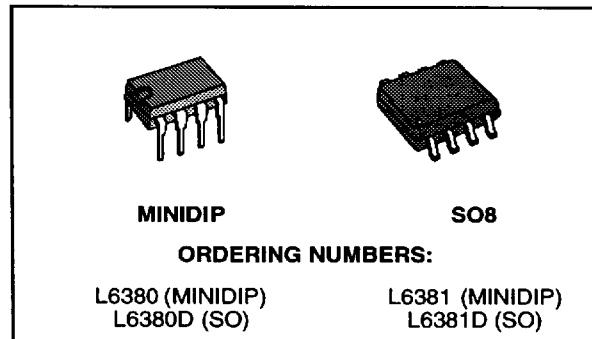


**HIGH VOLTAGE**  
**HIGH-SIDE DRIVER**

PRODUCT PREVIEW

- V<sub>H.V.</sub> UP TO 600 V
- SUPPLY VOLTAGE UP TO 17 V
- DRIVER CURRENT CAPABILITY:  
SINK CURRENT = 200 mA  
SOURCE CURRENT = 100 mA
- UNDER VOLTAGE LOCKOUT WITH HYS-TERESIS
- CMOS/LSTTL COMPATIBLE INVERTING IN-PUT
- dV/dt IMMUNITY ± 50 V/nS IN FULL TEM-PERATURE RANGE
- CURRENT MODE CONTROL REFERENCE INPUT
- CURRENT/VOLTAGE MODE OPERATION (L6380)
- VOLTAGE MODE OPERATION (L6381)
- 8 PINS PACKAGE



**DESCRIPTION**

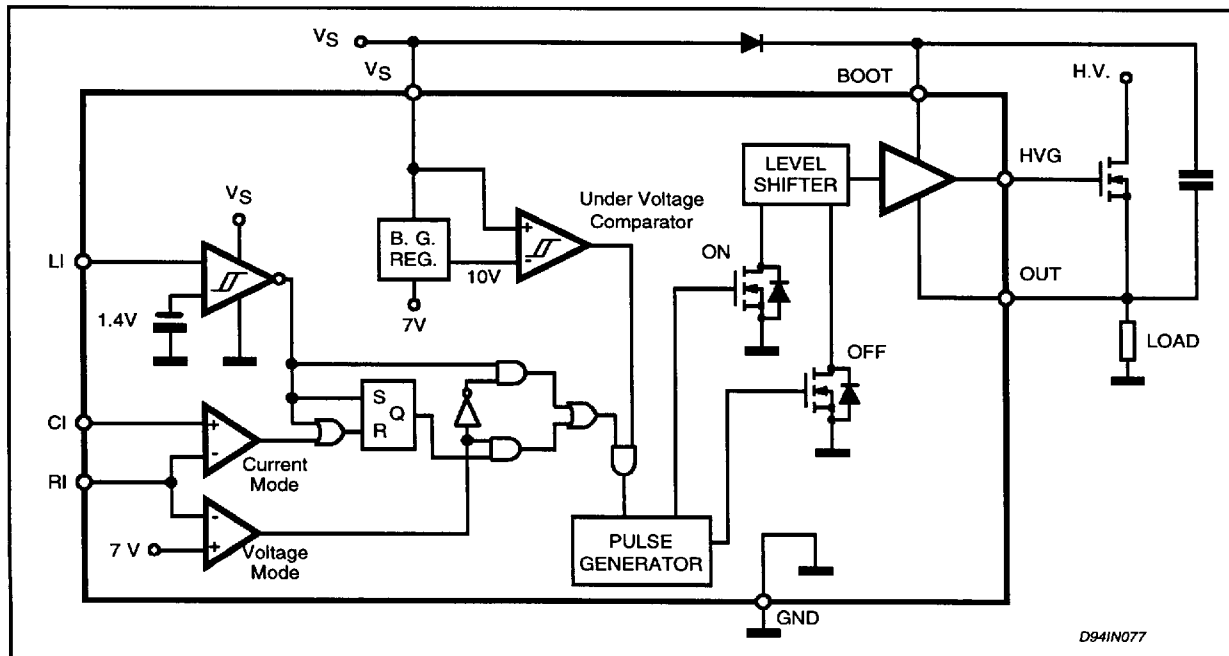
The L6380/L6381 is an high-voltage device with a

driving stage floating up to 500V.

It can be used to drive N-channel power MOSFET and IGBT, in high-side and low-side configura-tions.

The device has a logic input (CMOS and LSTTL compatible) and two comparator inputs compati-ble to ground.

**L6380 BLOCK DIAGRAM**



## L6380 - L6381

To drive the external power device the signal coming from input logic is fed into a pulse generator that in turns drives the level shifting structure (that include two High Voltage DMOS) designed to ensure low power dissipation and high noise immunity. The output buffer (in Totem Pole arrangement) is able to sink from or source to the gate of the external device the current needed to switch it ON or OFF.

The falling edge of the signal coming from the input logic will turn ON while the rising edge will turn OFF the driven power device. This operation will ensure low current sinking from the HV rail during commutations.

### Current / Voltage Mode Operation

To select the Voltage Mode Operation the user have to set on the RI pin a voltage higher than the internal reference (7V). In this way the IC will function as an inverting buffer driven by the LI input pin (see Voltage Mode Timing Diagram).

If the voltage on RI input pin is lower than 7V the Current Mode Operation will be enabled. In this configuration the RI input will set the reference

voltage to the non inverting input of the Current Mode Comparator (see block diagram), whose inverting input, the CI input pin, is allowable to close a current control loop with a voltage drop coming from a sense resistor. To summarise (see Current Mode Timing Diagrams):

The output of the Current Mode Comparator will mask the LI input whenever the CI voltage is higher than the RI input (and the RI voltage is below 7V).

### Under Voltage Lockout

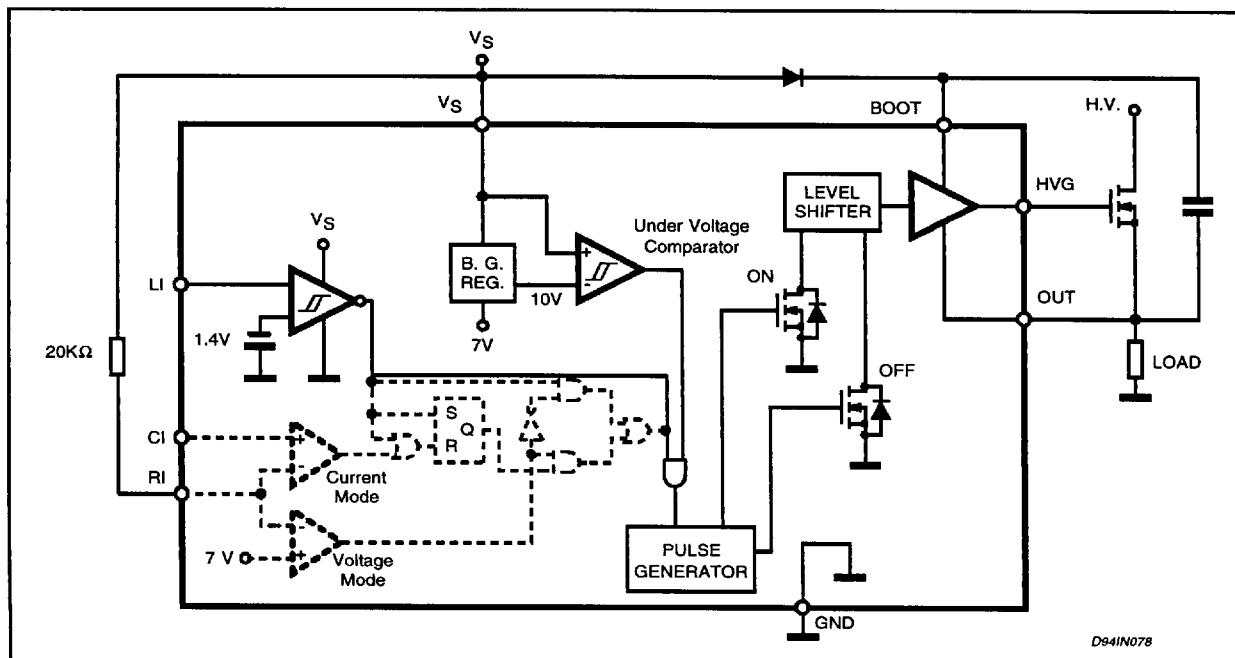
The output buffer is switched off whenever  $V_s$  decrease below  $V_{th}$  OFF.

The IC will remain in this shut down status until  $V_s$  has risen above  $V_{thON}$ , the hysteresis will provide a good noise immunity.

### Applications

The L6380/L6381 can be used in motor control applications (AC, DC and switched reluctance), electronic ballasts, heating and welding, switching power supplies and UPS.

### L6381 BLOCK DIAGRAM



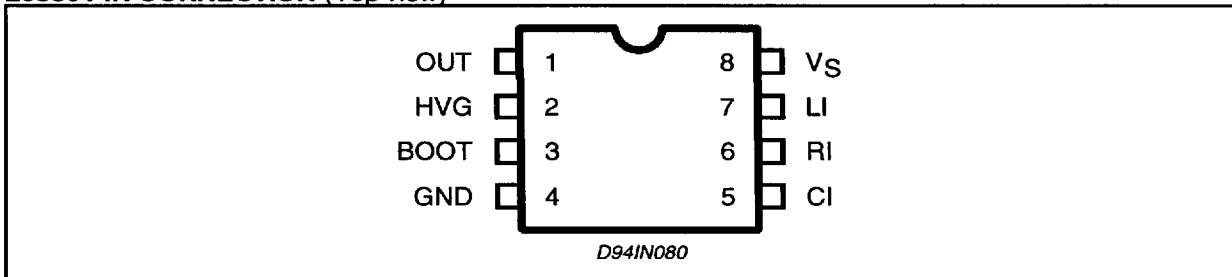
**ABSOLUTE MAXIMUM RATINGS**

Symbol	Parameter	Value	Unit
V <sub>BOOT</sub>	Supply voltage of bootstrapped section	600+V <sub>S</sub>	V
V <sub>HVG</sub>	Gate voltage of upper driver	600+V <sub>S</sub>	V
V <sub>OUT</sub>	Output voltage	600	V
V <sub>BOOT</sub> - V <sub>OUT</sub>	Difference between boot voltage and output voltage	18	V
V <sub>HVG</sub> - V <sub>OUT</sub>	Difference between gate voltage of upper gate and output voltage	18	V
V <sub>S</sub>	Supply voltage	18	V
V <sub>IN</sub>	Input voltage	V <sub>S</sub>	V
dV <sub>OUT</sub> /dt	Transient offset supply voltage	±50	V/ns
V <sub>OUT</sub> - V <sub>GND</sub>	Difference between output voltage and ground (t <sub>p</sub> ≤ 100 ns)	-10	V
T <sub>amb</sub>	Ambient Temperature Range (operative)	-25 to +85	°C
T <sub>J</sub>	Junction temperature	150	°C
T <sub>ST</sub>	Storage temperature	-40 to +150	°C
P <sub>tot</sub>	Total Power Dissipation (at T <sub>j</sub> = 85°C)	650	mW

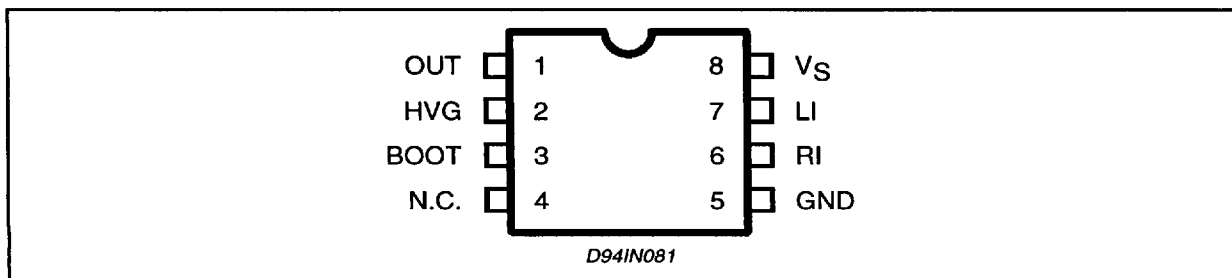
**THERMAL DATA**

Symbol	Parameter	MINIDIP	SO8	Unit
R <sub>th j-amb</sub>	Thermal Resistance, Junction Ambient	Max. 100	150	°C/W

**L6380 PIN CONNECTION (Top view)**



**L6381 PIN CONNECTION (Top view)**



**ELECTRICAL CHARACTERISTICS****DC OPERATION** ( $V_S = 15V$ ;  $T_j = 25^\circ C$ ; unless otherwise specified.)

Symbol	Pin	Parameter	Test Condition	Min.	Typ.	Max.	Unit
$V_S$	8	Supply Voltage (operative)				17	V
$V_{thON}$		UV Turn-On Theshold		10	10.5	11	V
$V_{thOFF}$		UV Turn-Off Theshold		9	9.5	10	V
$V_{Shys}$		UV Hysteresis		0.5	0.75	1	V
$I_q$		Quiescent Current Before Start-Up	$V_S \leq 8V$		300	500	mA
$I_{qs}$		Quiescent Supply Current			2	3	mA
$V_{il}$	7	Logic Input Low Level				0.8	V
$V_{ih}$		Logic Input High Level		2			V
$V_{co}$	6 vs 5	Input Comparator Offset		0		100	mV
$V_{thRI}$	6	Mode Selection Internal Threshold Voltage		6.5	7	7.5	V
$I_{so}$	2	Source Current	$V_{BOOT} - V_{OUT} = 12V$ ; $V_{HVG} - V_{OUT} = 6V$ ; $t_p \leq 10\mu s$		100		mA
$I_{si}$		Sink Current	$V_{BOOT} - V_{OUT} = 12V$ ; $V_{HVG} - V_{OUT} = 6V$ ; $t_p \leq 10\mu s$		-200		mA
$I_{qBOOT}$	3	Boot Supply Quiescent Current	$V_{HVG} = V_{BOOT}$		70		$\mu A$
$I_{kgBOOT}$		Boot Leakage Current	$V_{BOOT} = 500V$			10	$\mu A$
$I_{kgHVG}$	2	Gate Driver Leakage Current	$V_{HVG} = 500V$			10	$\mu A$
$I_{kgOUT}$	1	Output Leakage Current	$V_{OUT} = 500V$			10	$\mu A$
$I_{bias}$	5, 6	Input Bias Current				1	$\mu A$
	7					10	$\mu A$

**AC OPERATION** ( $V_S = 15V$ ;  $T_j = 25^\circ C$ ; unless otherwise specified.)

Symbol	Parameter	Test Condition	Min.	Typ.	Max.	Unit	
$t_r$	Gate Driver Rise Time	$C_L(HVG, OUT) = 1nF$ ; $V_{OUT} = 0$ to $500V$		200		ns	
$t_f$	Gate Driver Fall Time			100		ns	
$t_{ON}$	Turn-On Delay					600	ns
$t_{OFF}$	Turn-Off Delay					600	ns

Figure 1: AC Operation Test Circuit

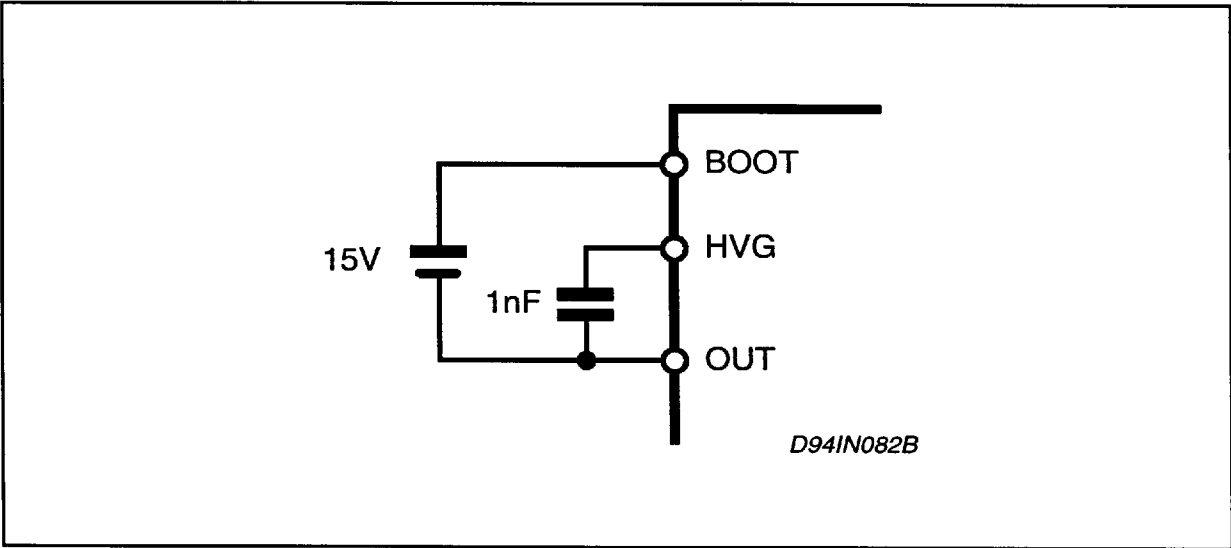
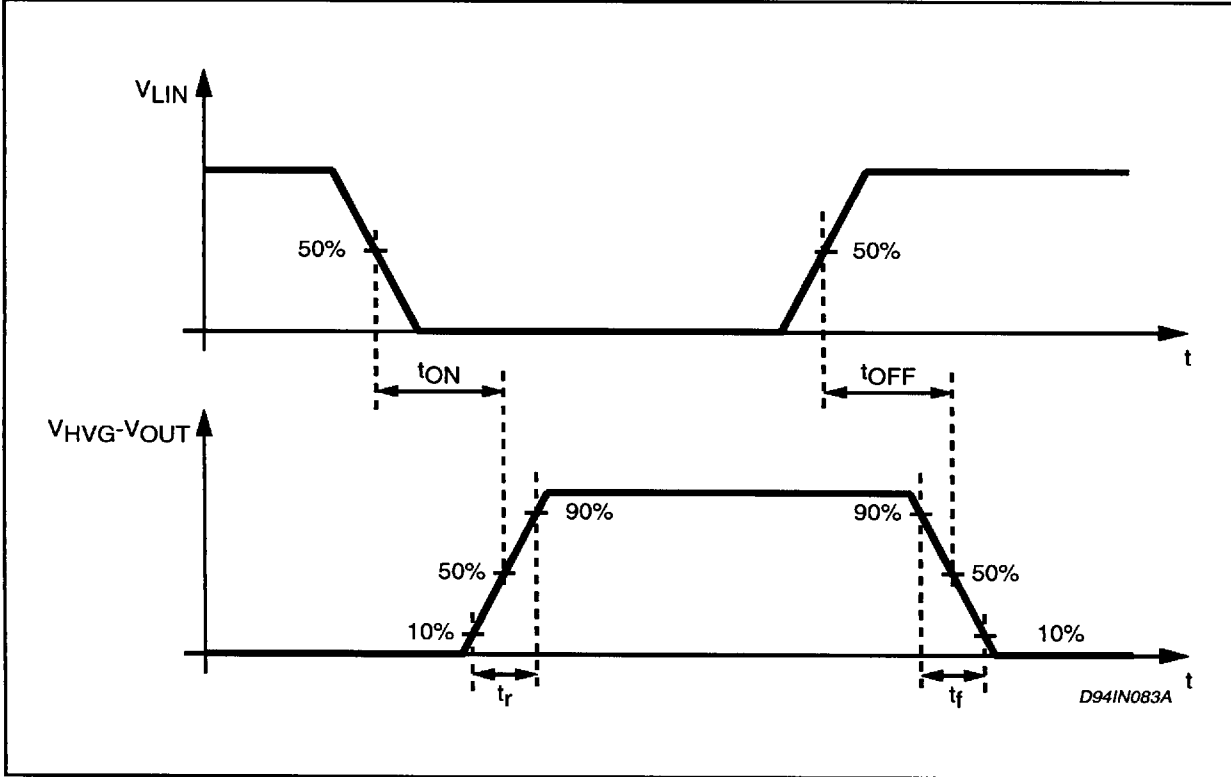
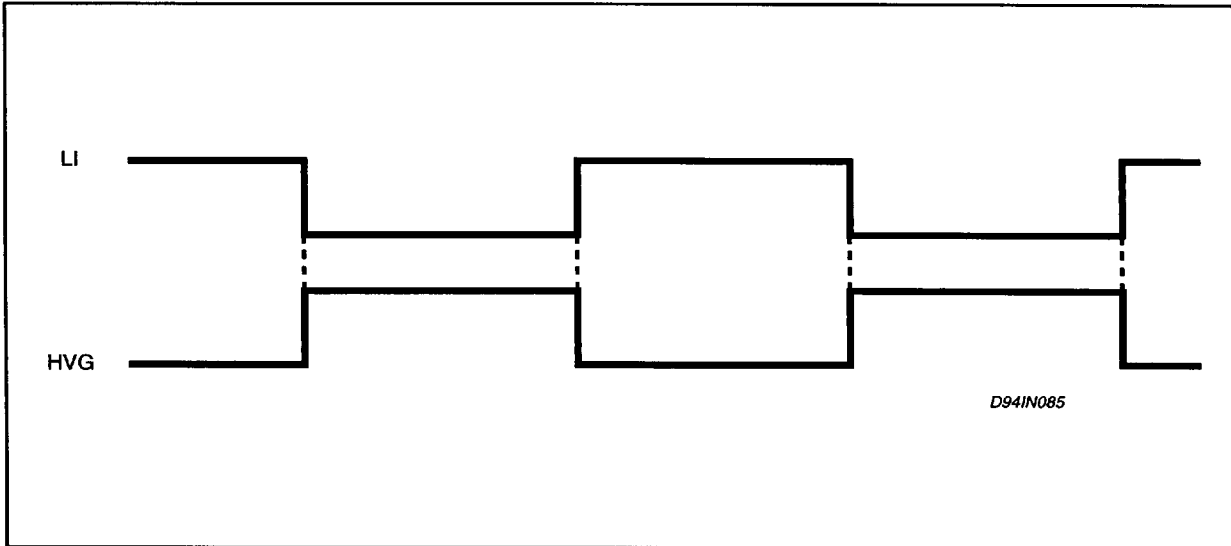


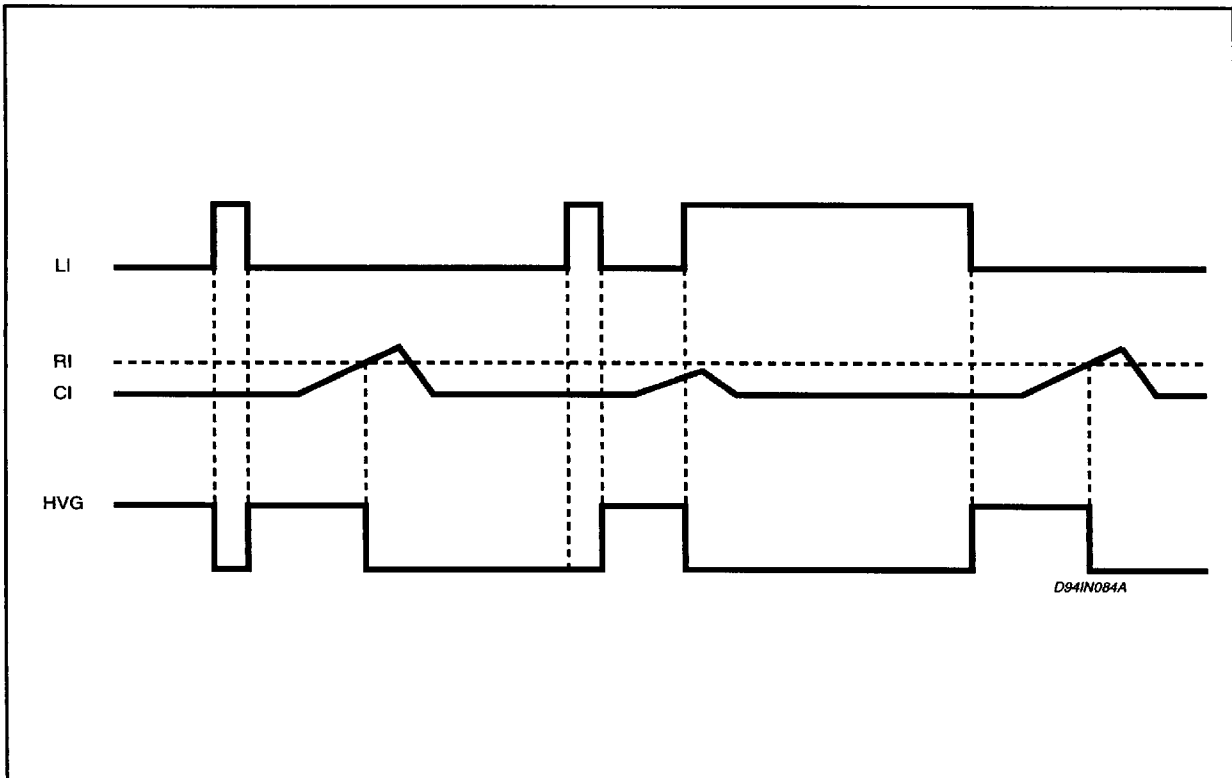
Figure 2: Switching Waveforms



Voltage Mode Timing Diagrams

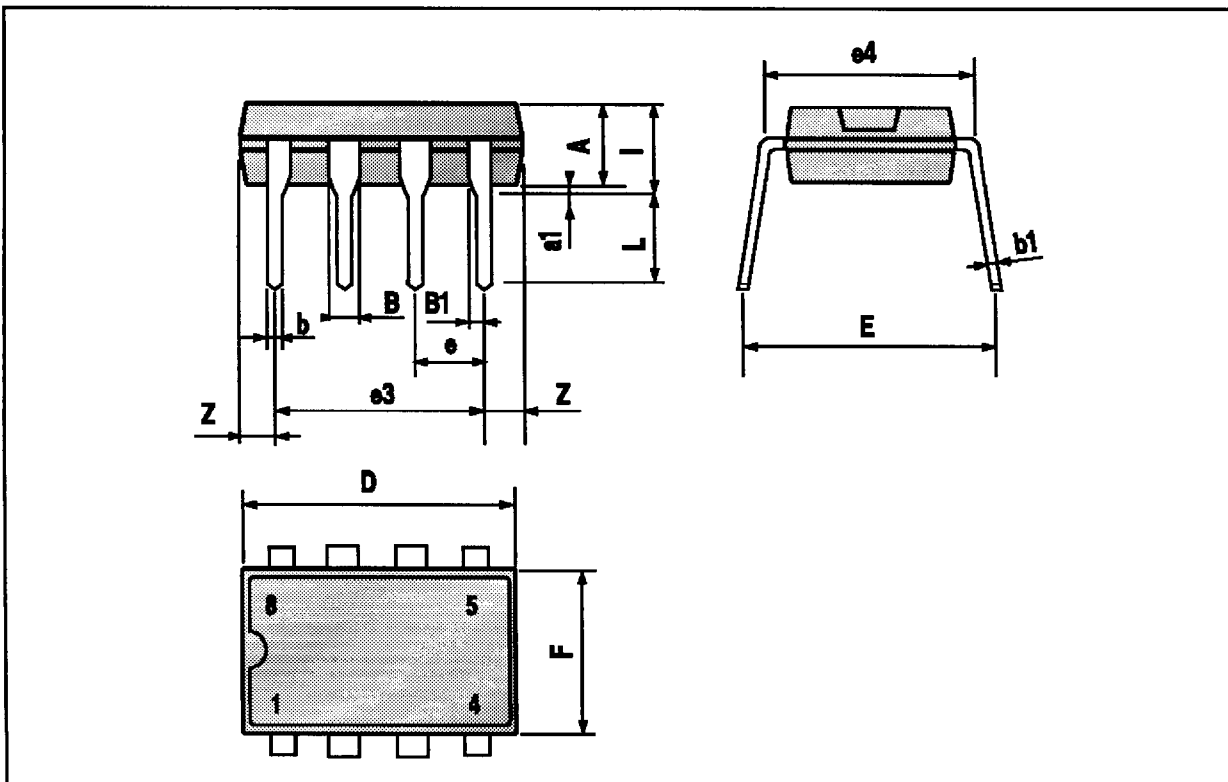


Current Mode Timing Diagrams



MINIDIP PACKAGE MECHANICAL DATA

DIM.	mm			inch		
	MIN.	TYP.	MAX.	MIN.	TYP.	MAX.
A		3.32			0.131	
a1	0.51			0.020		
B	1.15		1.65	0.045		0.065
b	0.356		0.55	0.014		0.022
b1	0.204		0.304	0.008		0.012
D			10.92			0.430
E	7.95		9.75	0.313		0.384
e		2.54			0.100	
e3		7.62			0.300	
e4		7.62			0.300	
F			6.6			0.260
I			5.08			0.200
L	3.18		3.81	0.125		0.150
Z			1.52			0.060



SO8 PACKAGE MECHANICAL DATA

DIM.	mm			inch		
	MIN.	TYP.	MAX.	MIN.	TYP.	MAX.
A			1.75			0.069
a1	0.1		0.25	0.004		0.010
a2			1.65			0.065
a3	0.65		0.85	0.026		0.033
b	0.35		0.48	0.014		0.019
b1	0.19		0.25	0.007		0.010
C	0.25		0.5	0.010		0.020
c1	45° (typ.)					
D	4.8		5.0	0.189		0.197
E	5.8		6.2	0.228		0.244
e		1.27			0.050	
e3		3.81			0.150	
F	3.8		4.0	0.15		0.157
L	0.4		1.27	0.016		0.050
M			0.6			0.024
S	8° (max.)					

