

## Aeromat air circuit breakers

type AE 1000-SS / AE 3200-SS

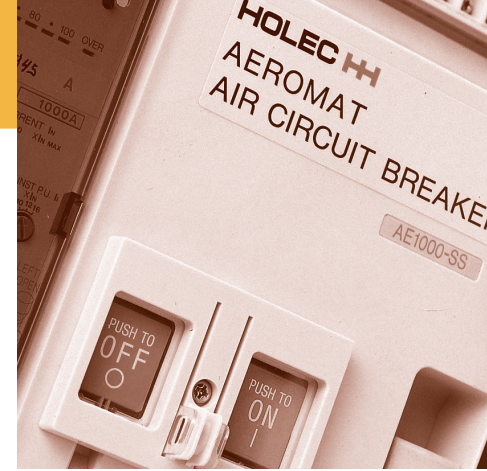
1000 A - 1250 A - 1600 A - 2000 A - 2500 A - 3200 A, 690 V~

Aeromat state-of-the-art air circuit breakers are specially suitable for switchboards in industries and utility buildings where high safety and reliability requirements, together with small dimensions apply. A complete range of electronic trip relays for standard and special application guarantees optimum operation under a wide variety of conditions.

**techn. data** see page 2

**dimensions** see pages 3 - 4

Detailed ordering information on request.



### Characteristics



- 3-pole and 4-pole in fixed and withdrawable design;
- Very compact construction due to the use of new synthetic materials;
- Max. switch height 430 mm;
- Only two circuit breaker sizes: 1000 A up to 1600 A and 2000 A up to 3200 A;
- High short-circuit capacity: 65 kA (up to 1600 A) and 85 kA (up to 3200 A) at 500 V~;
- Minimum arc discharge rate allows closely spaced stacking in switchgear cubicles;
- Negligible maintenance;
- Relatively light weight due to the restricted number of parts and the consistent application of synthetic resins;
- High accuracy together with high reliability;
- Contemporary modern styling.

### Electronic trip relay

A wide range of protection functions is available, such as:

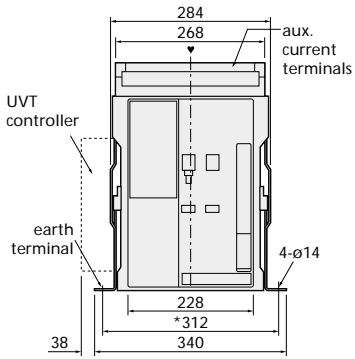
- Pre-alarm at overload currents;
- Temperature alarm when breaker contacts reach inadmissibly high temperatures;
- Ground fault trip or alarm function;
- Residual current alarm or tripping facility;
- Protection against overcurrent in neutral pole due to third harmonic wave forms generated from loads with d.c. power supplies, etc.;
- Load current LED indication;
- Load current measurement of the largest phase current;
- Special electronic trip relay to protect industrial and marine use generators;
- Independent effective value (r.m.s.) detection for each phase to cope with increasing use of electronic devices;
- Expanded discrimination range with making current release (MCR) function.

## Technical data and dimensions

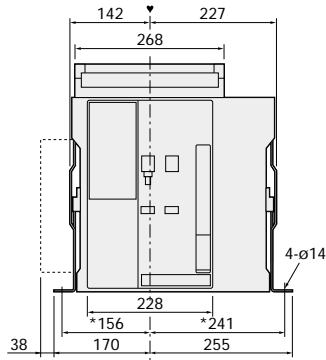
### air circuit breakers Aeromat

type:	AE 1000-SS	AE 1250-SS	AE 1600-SS	AE 2000-SS	AE 2500-SS	AE 3200-SS
rated insulation voltage:	$U_i$ 1000 V	1000 V	1000 V	1000 V	1000 V	1000 V
rated operational voltage:	$U_e$ 690 V	690 V	690 V	690 V	690 V	690 V
rated current:	$I_n$ 1000 A	1250 A	1600 A	2000 A	2500 A	3200 A
frequency:	50/60 Hz	50/60 Hz	50/60 Hz	50/60 Hz	50/60 Hz	50/60 Hz
number of poles:	3 - 4	3 - 4	3 - 4	3 - 4	3 - 4	3 - 4
rated short-circuit making capacity						
at $U_e = 690\text{ V}\sim$ :	$I_{cm}$ 105 kA	105 kA	105 kA	105 kA	105 kA	105 kA
at $U_e = 500\text{ V}\sim$ :	$I_{cm}$ 143 kA	143 kA	143 kA	187 kA	187 kA	187 kA
rated service short-circuit breaking capacity						
at $U_e = 690\text{ V}\sim$ :	$I_{cs}$ 50 kA	50 kA	50 kA	50 kA	50 kA	50 kA
at $U_e = 500\text{ V}\sim$ :	$I_{cs}$ 65 kA	65 kA	65 kA	85 kA	85 kA	85 kA
rated ultimate short-circuit breaking capacity						
at $U_e = 690\text{ V}\sim$ :	$I_{cu}$ 50 kA	50 kA	50 kA	65 kA	65 kA	65 kA
at $U_e = 500\text{ V}\sim$ :	$I_{cu}$ 65 kA	65 kA	65 kA	85 kA	85 kA	85 kA
rated short-time withstand current						
at 1 s:	$I_{cw}$ 65 kA	65 kA	65 kA	65 kA	65 kA	65 kA
at 2 s:	$I_{cw}$ 40 kA	40 kA	60 kA	65 kA	65 kA	65 kA
at 3 s:	$I_{cw}$ 30 kA	30 kA	50 kA	65 kA	65 kA	65 kA
max. total breaking time:	0.04 s	0.04 s	0.04 s	0.04 s	0.04 s	0.04 s
closing time:	0.08 s	0.08 s	0.08 s	0.08 s	0.08 s	0.08 s
number of operating cycles						
with rated current:	3000	3000	2000	1500	1500	1000
without rated current:	10000	10000	10000	10000	10000	10000
standards:	EN 60947-2, IEC 60947-2					

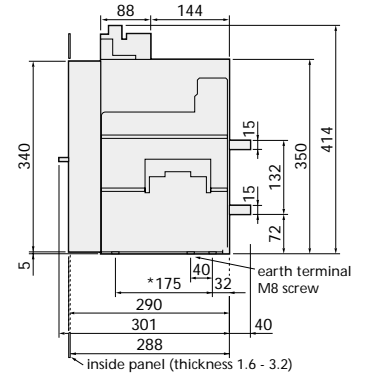
fixed design / types: AE 1000-SS, AE 1250-SS, AE 1600-SS



3-pole (front view)

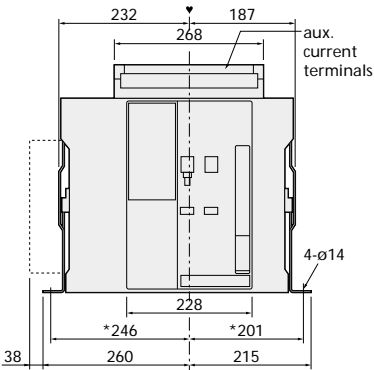


4-pole (front view)

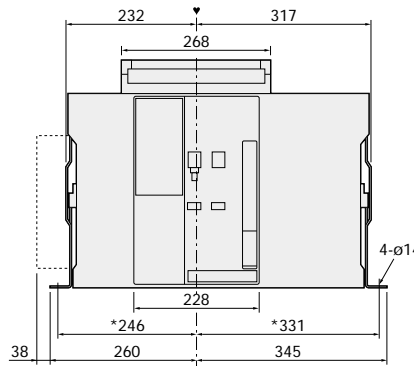


(side view)

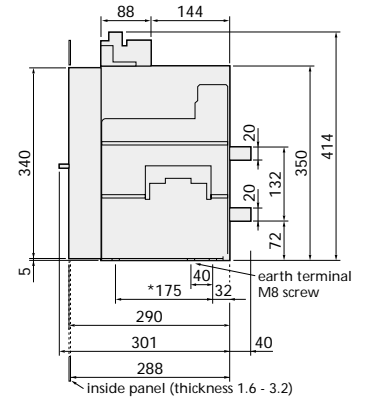
fixed design / types: AE 2000-SS, AE 2500-SS, AE 3200-SS



3-pole (front view)

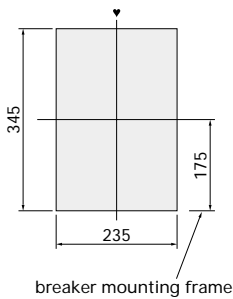


4-pole (front view)

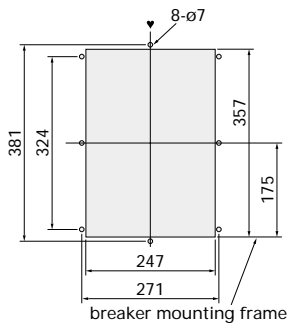


(side view)

door frame cut-out



panel cut-out

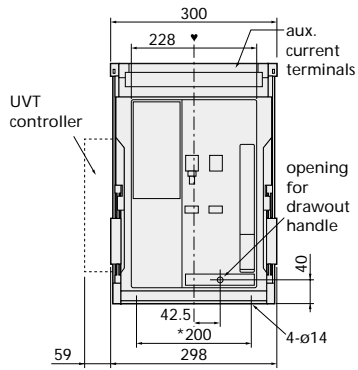


♥ = operating panel centre;  
\* = mounting pitch

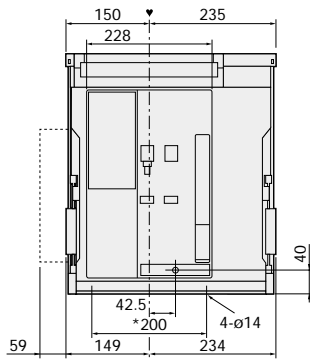
**Dimensions (mm) Aeromat air circuit breakers**

Dimensions Aeromat air circuit breakers

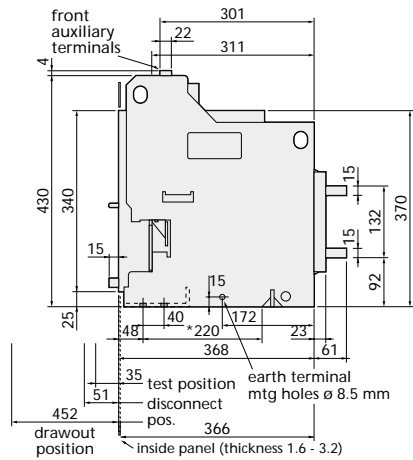
withdrawable design / types: AE 1000-SS, AE 1250-SS, AE 1600-SS



3-pole (front view)

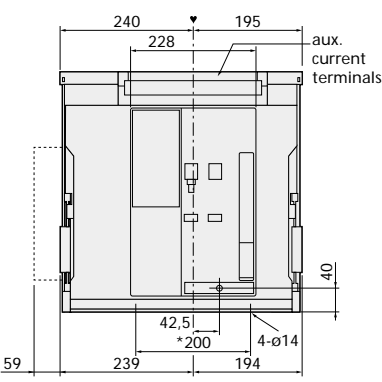


4-pole (front view)

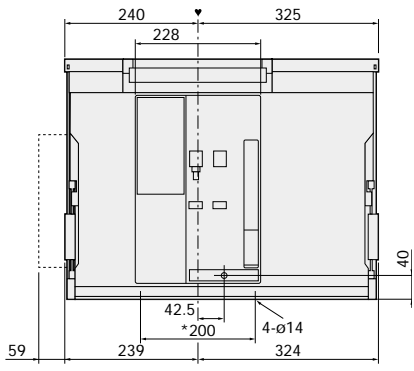


(side view)

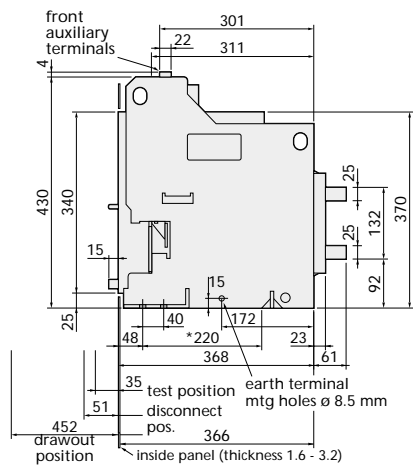
withdrawable design / types: AE 2000-SS, AE 2500-SS, AE 3200-SS



3-pole (front view)

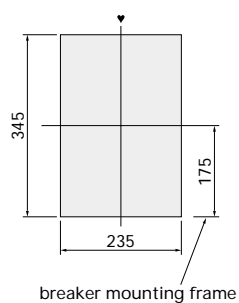


4-pole (front view)

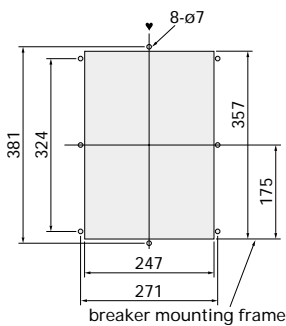


(side view)

door frame cut-out



panel cut-out



♥ = operating panel centre;  
\* = mounting pitch