

## Radiation Hardened Fast Sample and Hold

The HS-2420RH is a radiation hardened monolithic circuit consisting of a high performance operational amplifier with its output in series with an ultra-low leakage analog switch and MOSFET input unity gain amplifier.

With an external hold capacitor connected to the switch output, a versatile, high performance sample-and-hold or track-and-hold circuit is formed. When the switch is closed, the device behaves as an operation amplifier, and any of the standard op amp feedback networks may be connected around the device to control gain, frequency response, etc. When the switch is opened the output will remain at its last level.

Performance as a sample-and-hold compares very favorably with other monolithic, hybrid, modular, and discrete circuits. Accuracy to better than 0.01% is achievable over the temperature range. Fast acquisition is coupled with superior droop characteristics, even at high temperatures. High slew rate, wide bandwidth, and low acquisition time produce excellent dynamic characteristics. The ability to operate at gains greater than 1 frequently eliminates the need for external scaling amplifiers.

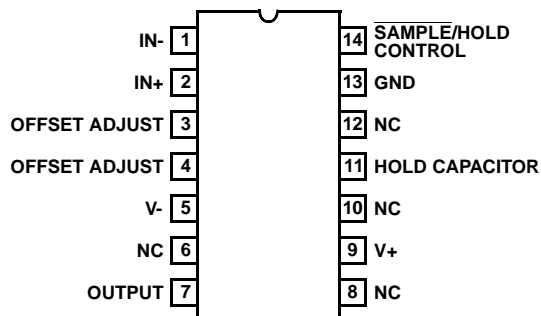
The device may also be used as a versatile operational amplifier with a gated output for applications such as analog switches, peak holding circuits, etc.

**Specifications for Rad Hard QML devices are controlled by the Defense Supply Center in Columbus (DSCC). The SMD numbers listed here must be used when ordering.**

**Detailed Electrical Specifications for these devices are contained in SMD 5962-95669. A "hot-link" is provided on our website for downloading.**

## Pinout

**14 LEAD METAL-SEALED SIDE-BRAZED CERAMIC DIP  
MIL-STD-1835, CDIP2-T14  
TOP VIEW**



## Features

- Electrically Screened to SMD # 5962-95669
- QML Qualified per MIL-PRF-38535 Requirements
- Maximum Acquisition Time
  - 10V Step to 0.1% . . . . . 4μs
  - 10V Step to 0.01% . . . . . 6μs
- Maximum Drift Current . . . . . 10nA (Maximum Over Temperature)
- TTL Compatible Control Input
- Power Supply Rejection . . . . . ≥ 80dB
- Total Dose . . . . . 100 krad(Si) (Max)
- No Latch-Up

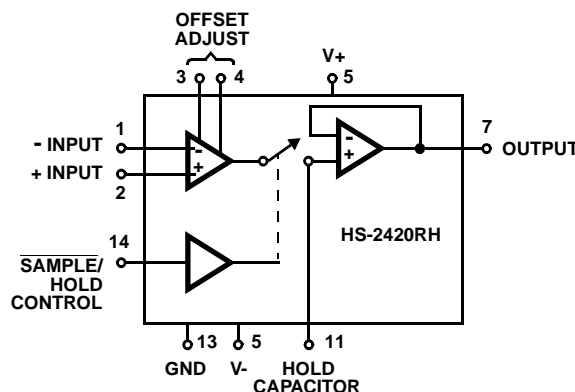
## Applications

- Data Acquisition Systems
- D to A Deglitcher
- Auto Zero Systems
- Peak Detector
- Gated Op Amp

## Ordering Information

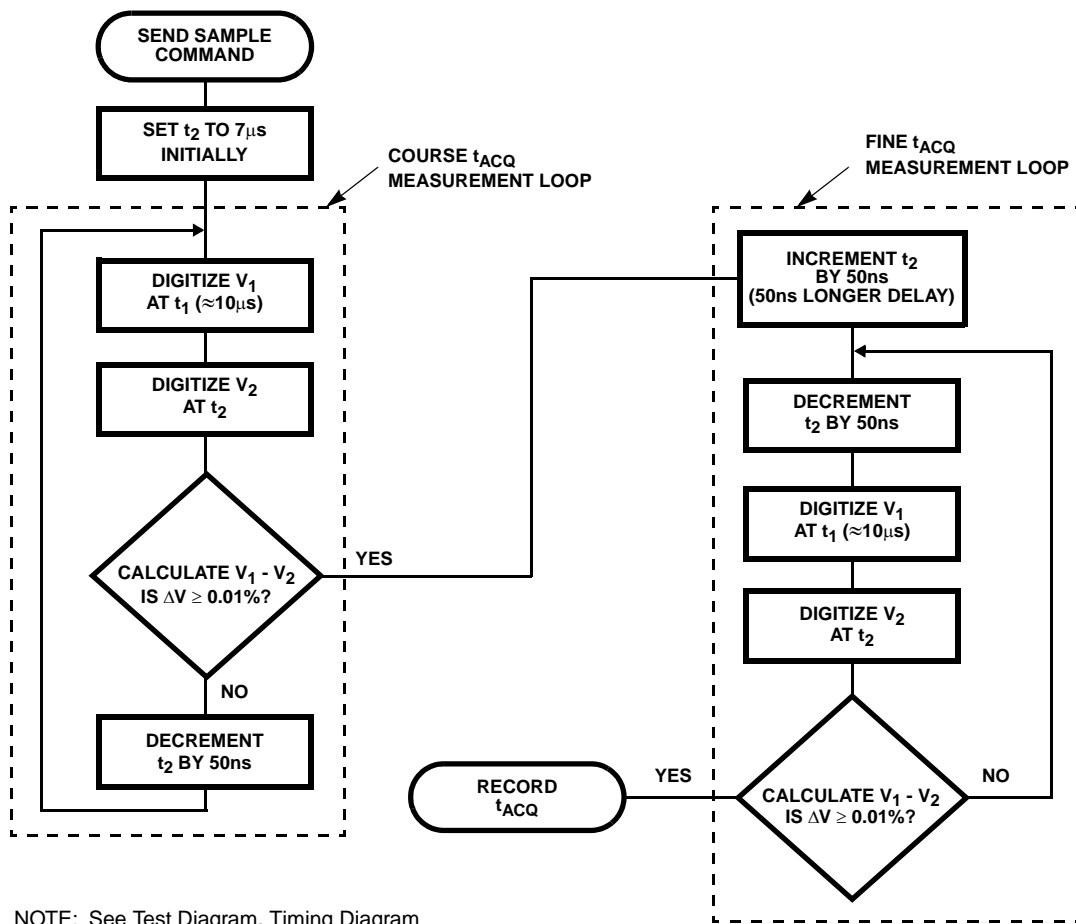
ORDERING NUMBER	INTERNAL MKT. NUMBER	TEMP. RANGE (°C)
5962R9566901VCC	HS1B-2420RH-Q	-55 to 125

## Functional Diagram





Test Circuits (Continued)



NOTE: See Test Diagram, Timing Diagram

FIGURE 4. ACQUISITION TIME ( $t_{ACQ}$  TO 0.01% IS SHOWN,  $t_{ACQ}$  TO 0.1% IS DONE IN THE SAME MANNER)

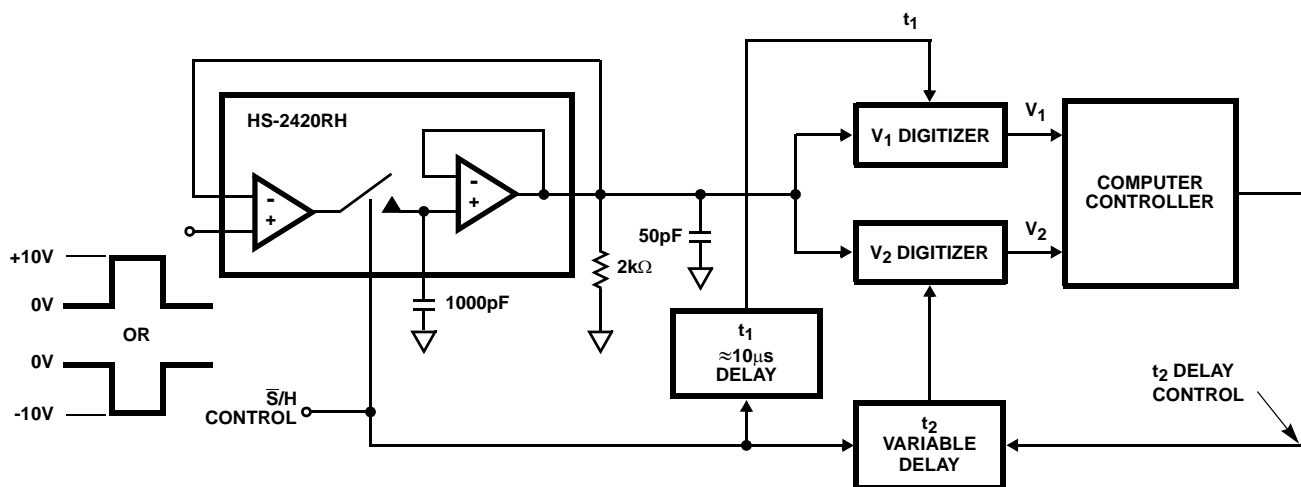


FIGURE 5.

## Timing Waveforms

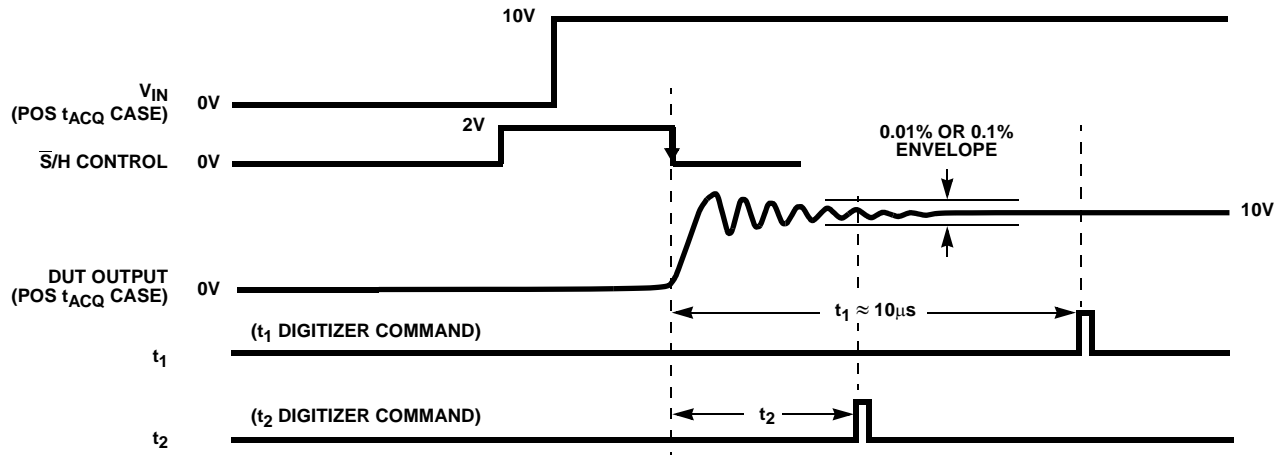


FIGURE 6. TIMING DIAGRAM FOR ACQUISITION TIME, (POSITIVE  $t_{ACQ}$  CASE)

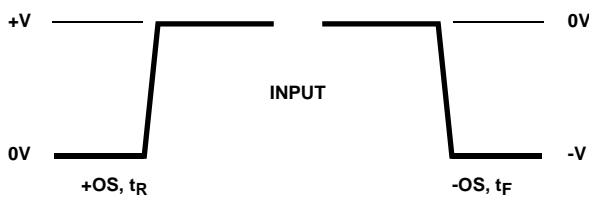


FIGURE 7A.

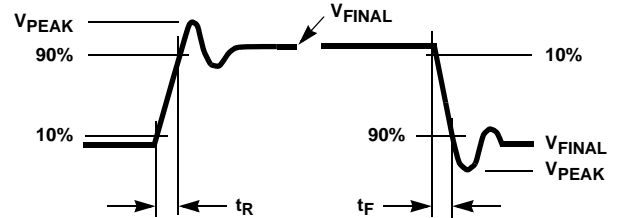


FIGURE 7B.

FIGURE 7. OVERSHOOT, RISE AND FALL TIME WAVEFORMS

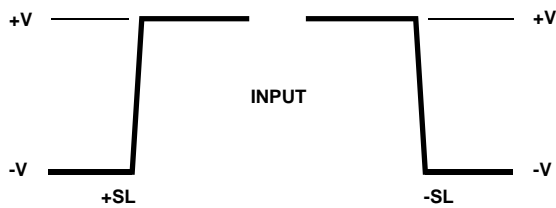


FIGURE 8A.

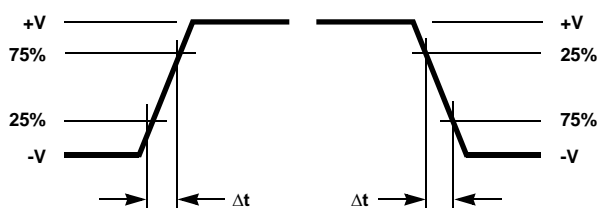


FIGURE 8B.

FIGURE 8. SLEW RATE WAVEFORMS

**Typical Performance Curves**  $V_{SUPPLY} = \pm 15V_{DC}$ ,  $T_A = 25^{\circ}C$ ,  $CH = 1000pF$ , Unless Otherwise Specified

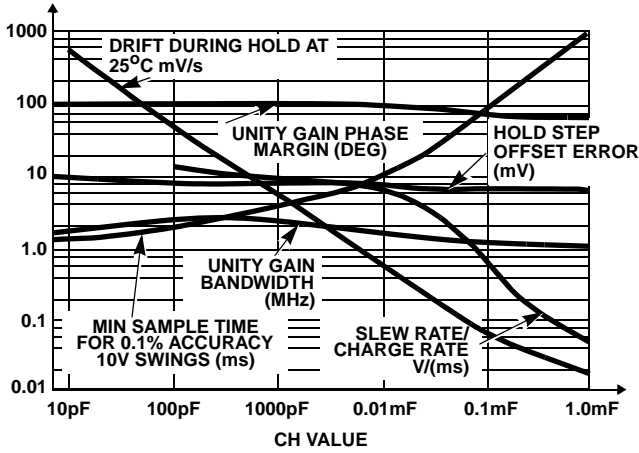


FIGURE 9. TYPICAL SAMPLE AND HOLD PERFORMANCE vs HOLDING CAPACITOR

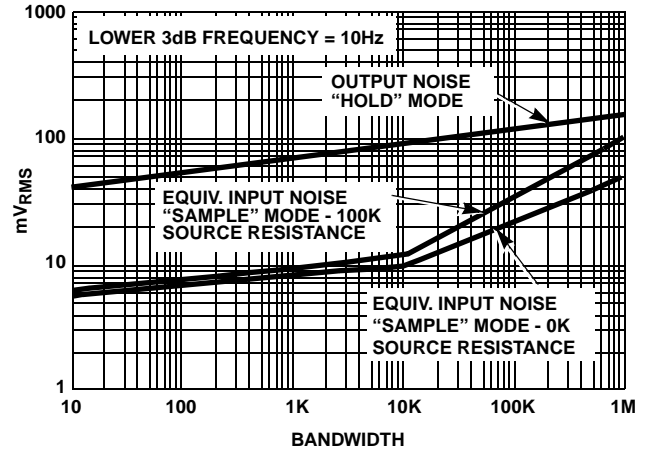


FIGURE 10. BROADBAND NOISE CHARACTERISTICS

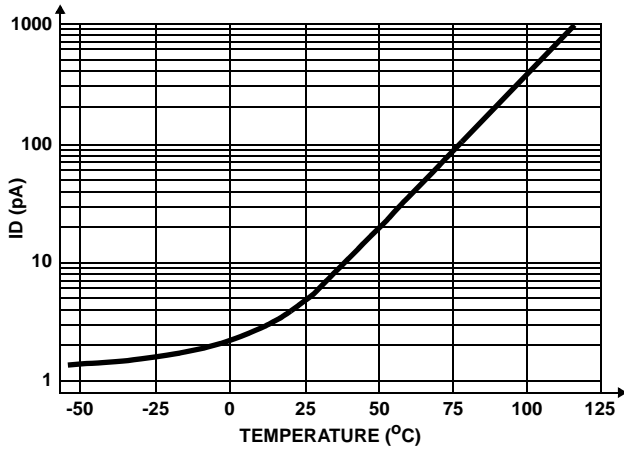


FIGURE 11. DRIFT CURRENT vs TEMPERATURE

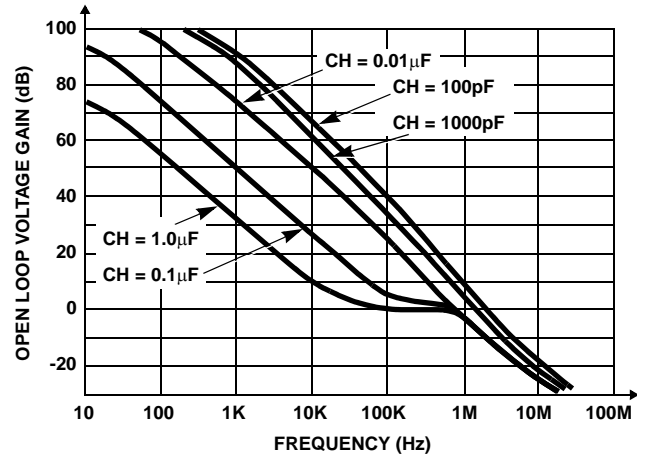


FIGURE 12. OPEN LOOP FREQUENCY RESPONSE

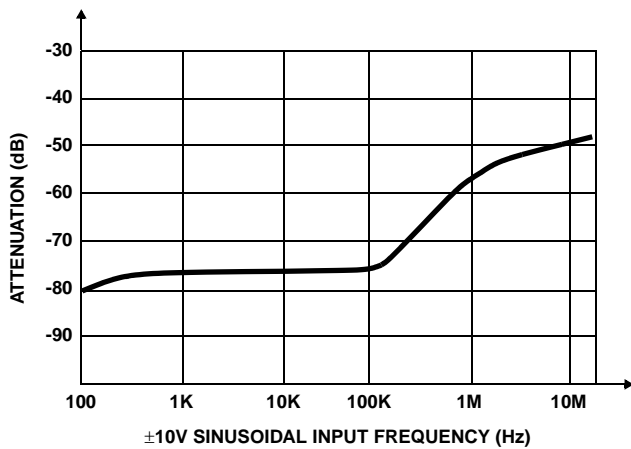


FIGURE 13. HOLD MODE FEEDTHROUGH ATTENUATION  
 $CH = 1000pF$

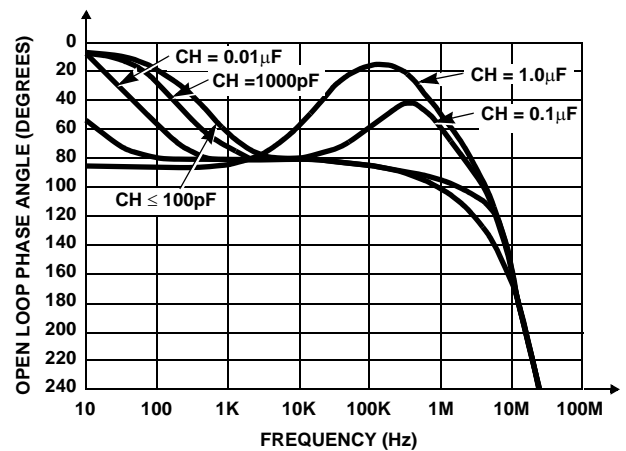
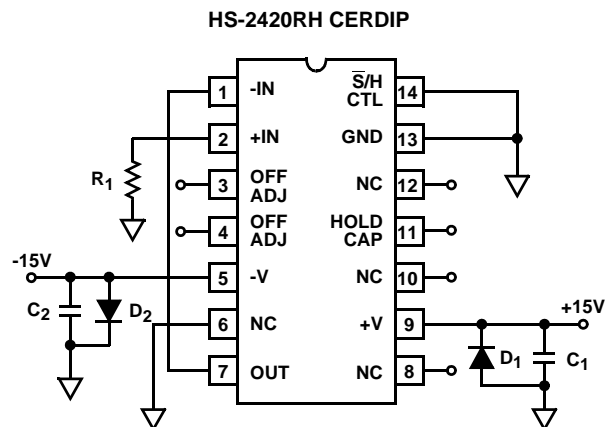


FIGURE 14. OPEN LOOP PHASE RESPONSE

## Burn-In Circuit



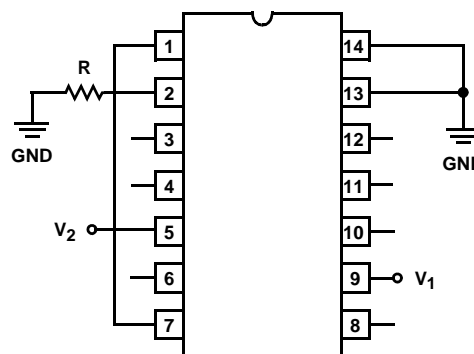
### NOTES:

$R_1 = 100k\Omega \pm 5\%$  (per socket)

$C_1 = C_2 = 0.1\mu F$  (one per row) or  $0.01\mu F$  (one per socket)

$D_1 = D_2 = 1N4002$  or equivalent (per board)

## Irradiation Circuit



### NOTES:

$V_1 = +15V$

$V_2 = -15V$

$R = 100k\Omega$

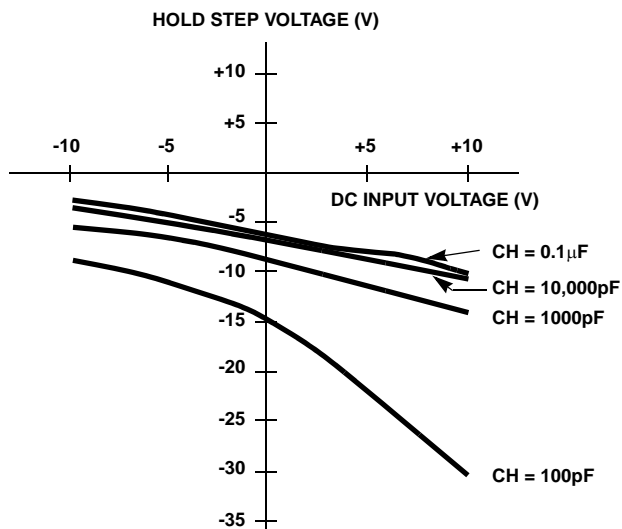


FIGURE 15. HOLD STEP vs INPUT VOLTAGE

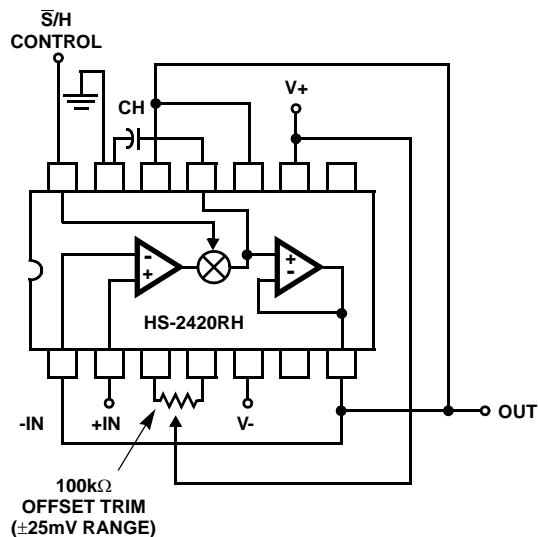


FIGURE 16. BASIC SAMPLE-AND-HOLD (TOP VIEW)

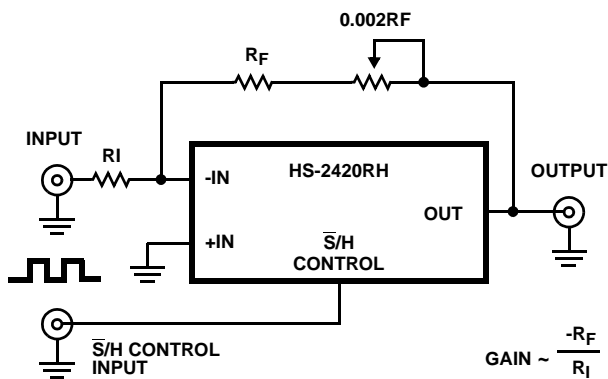


FIGURE 17. INVERTING CONFIGURATION

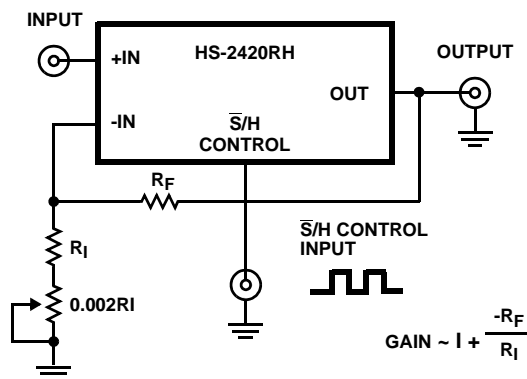


FIGURE 18. NONINVERTING CONFIGURATION

## Offset and Gain Adjustment

### Offset Adjustment

The offset voltage of the HS-2420RH may be adjusted using a 100k $\Omega$  trim pot, as shown in Figure 15. The recommended adjustment procedure is:

1. Apply 0V to the sample-and-hold input, and a square wave to the  $\overline{S}/H$  control.
2. Adjust the trim pot for 0V output in the hold mode.

### Gain Adjustment

The linear variation in pedestal voltage with sample-and-hold input voltage causes a -0.06% gain error (CH = 1000pF). In some applications (D/A deglitcher, A/D converter) the gain error can be adjusted elsewhere in the system, while in other applications it must be adjusted at the sample-and-hold. The two circuits shown below demonstrate how to adjust gain error at the sample-and-hold.

The recommended procedure for adjusting gain error is:

1. Perform offset adjustment.
2. Apply the nominal input voltage that should produce a +10V output.
3. Adjust the trim pot for +10V output in the hold mode.
4. Apply the nominal input voltage that should produce a -10V output.
5. Measure the output hold voltage (V-10 NOMINAL). Adjust the trim pot for an output hold voltage of:

$$\frac{(V-10 \text{ NOMINAL}) + (-10V)}{2}$$

## Die Characteristics

### DIE DIMENSIONS:

97 mils x 61 mils x 19 mils

### METALLIZATION:

Type: Al

Thickness:  $16\text{k}\text{\AA} \pm 2\text{k}\text{\AA}$

### GLASSIVATION:

Type: Silox

Thickness:  $14\text{k}\text{\AA} \pm 2\text{k}\text{\AA}$

### WORST CASE CURRENT DENSITY:

$2.0 \times 10^5 \text{A/cm}^2$

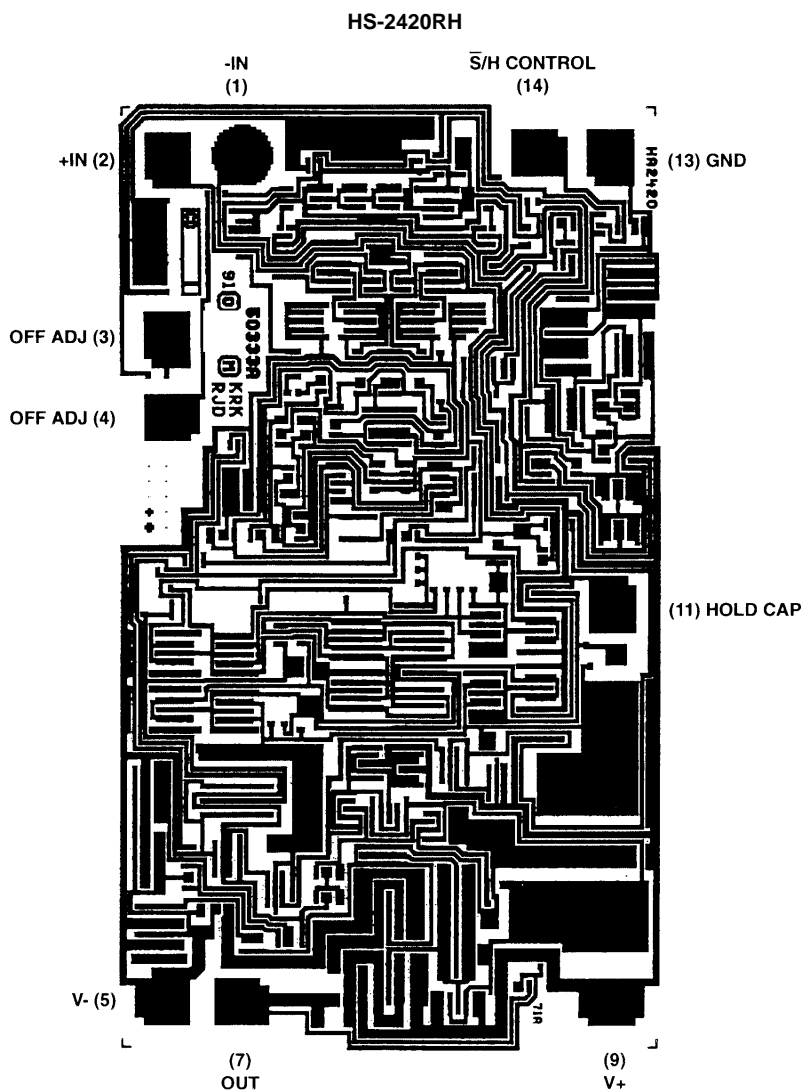
### TRANSISTOR COUNT:

78

### PROCESS:

Bipolar-Di

## Metallization Mask Layout



All Intersil U.S. products are manufactured, assembled and tested utilizing ISO9000 quality systems.

Intersil Corporation's quality certifications can be viewed at [www.intersil.com/design/quality](http://www.intersil.com/design/quality)

*Intersil products are sold by description only. Intersil Corporation reserves the right to make changes in circuit design, software and/or specifications at any time without notice. Accordingly, the reader is cautioned to verify that data sheets are current before placing orders. Information furnished by Intersil is believed to be accurate and reliable. However, no responsibility is assumed by Intersil or its subsidiaries for its use; nor for any infringements of patents or other rights of third parties which may result from its use. No license is granted by implication or otherwise under any patent or patent rights of Intersil or its subsidiaries.*

For information regarding Intersil Corporation and its products, see [www.intersil.com](http://www.intersil.com)