

Coaxial High Pass Filters

850 to 7550 MHz

NEW!
VHF-SERIES



CASE STYLE: FF704
PRICE: \$19.95 ea. QTY (1-9)

Maximum Ratings

| | |
|-----------------------|----------------|
| Operating Temperature | -55°C to 100°C |
| Storage Temperature | -55°C to 100°C |
| RF Power Input | 7W* max. |

*derate linearly to 3W at 100°C ambient.

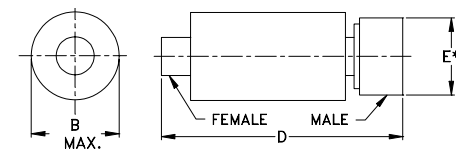
Features

- low cost
- small size
- 7 sections
- temperature stable
- dc block in/out, breakdown voltage, 1kV typ.
- excellent power handling, 7W

Applications

- sub-harmonic rejection and dc blocking
- transmitters/receivers
- lab use

Outline Drawing



B—OVERALL BODY DIMENSION
* ACROSS FLATS

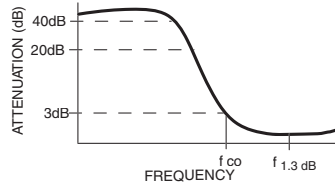
Outline Dimensions (inch/mm)

| | | | |
|-------|-------|------|-------|
| B | D | E | wt. |
| .461 | 1.42 | .312 | grams |
| 11.71 | 36.07 | 7.92 | 10 |

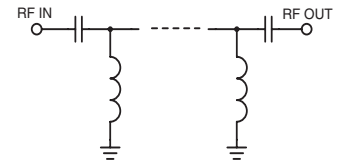
High Pass Filter Electrical Specifications (T_{AMB}=25°C)

| MODEL NO. | STOP BAND (MHz) | | f _{co} , MHz Nom. (loss 3 dB) Typ. | PASSBAND (MHz) | | VSWR Typ. | | POWER INPUT (W) Max. | NO. OF SECTIONS |
|-----------|-----------------|----------------|--|-------------------------|-----------------------|--------------|--------------------------|-------------------------|-----------------|
| | (loss > 40 dB) | (loss > 20 dB) | | (loss < 1.3 dB) Max. | (loss < 2 dB) Typ. | Stopband | Frequency (MHz) 1.5:1 | | |
| VHF-650 | 390 | 480 | 650 | 850-2000 | 710-2490 | 20:1 | 760-1700 | 7 | 7 |
| VHF-740 | 430 | 550 | 740 | 900-2200 | 780-2800 | 20:1 | 780-1900 | 7 | 7 |
| VHF-1200 | 780 | 940 | 1180 | 1340-4000 | 1220-4600 | 20:1 | 1300-3200 | 7 | 7 |
| VHF-1500 | 1140 | 1280 | 1530 | 1700-4500 | 1560-6300 | 20:1 | 1620-3450 | 7 | 7 |
| VHF-1760 | 950 | 1230 | 1760 | 2100-5200 | 1900-5500 | 20:1 | 2200-4500 | 7 | 7 |
| VHF-2000 | 1300 | 1530 | 2000 | 2410-5830 | 2260-6250 | 20:1 | 2400-5600 | 7 | 7 |
| VHF-2275 | 1400 | 1770 | 2275 | 2640-6230 | 2450-7000 | 20:1 | 2580-6000 | 7 | 7 |
| VHF-2700 | 1600 | 2000 | 2700 | 3150-6500 | 2800-7550 | 20:1 | 3200-6500 | 7 | 7 |

typical frequency response



schematic



Typical Performance Charts

