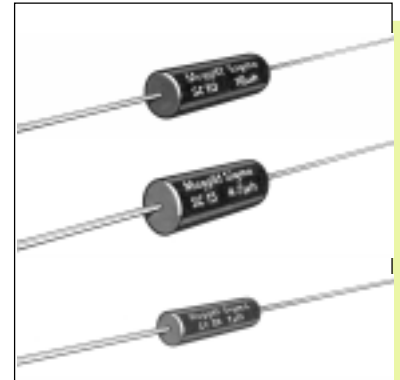


Axial RF Inductors

small size - high current style

Key features

- wide value range
- components insulated or shielded
- flame retardant
- wide temperature range
- fully protected from environment
- E12 value grid
- versatile size
- established reliability



type SC10/SC15/ SC30 series

Meggitt Sigma quality and reliability are guaranteed in this range of insulated and shielded RF Inductors. The insulated range has a self-extinguishing polyolefin sleeve. Their small size make them ideal for use when space is at a premium. And they are also fully protected from environmental factors. Electrostatic and electromagnetic screening is provided by the magnetic enclosure. A wide range of values are available and the self extinguishing polyolefin sleeve enhances environmental protection. The SC series was originally designed for military applications but now has widespread industrial use.

Specification

Ratings and Characteristics

Package	SC10	SC15	SC30
Inductance Range:	See Table - E12 Grid (Non-standard values available to special order)		
Selection Tolerance:	±10%	±10%	±10%
Power Rating at 70°C:	0.33W	0.33W	0.25W
Isolation Voltage:	700V DC or AC peak		
Limits of Inductance Change:	±5% after 1000 hours endurance		
Climatic Category:	55/100/21		

Approvals

The type SC10 Series is designed and built to meet BS9751 N0001 Pattern A.

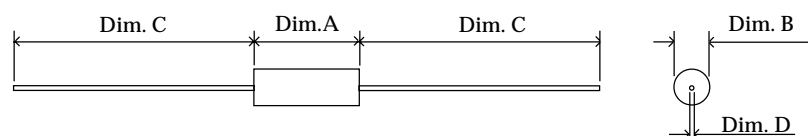
The type SC15 Series is designed and built to meet BS9751 N0001 Pattern A.

The type SC30 Series is designed and built to meet BS9751 N0001 Pattern A.

The SC Series no longer enjoys BS release but is sold under Meggitt ISO9001 approval.

Dimensions

Dimensions				
Type	A max.	B max.	C min.	D
SC10	10.0mm	3.9mm	25.0mm	0.6mm
SC15	10.0mm	4.5mm	30.0mm	0.5mm
SC30	7.0mm	2.7mm	25.0mm	0.5mm



sales action desk (01793) 611666
sales fax line (01793) 611777
e-mail sales@megelec.co.uk

Meggitt Sigma

small size - high current style

Specification

Electrical ~ SC10 Style

	Inductance Value - μ H	Inductance Code	Test Frequency MHz	Q Factor Minimum	Minimum SRF MHz	Maximum DC Resistance at 20°C	Direct Current at 70°C - Maximum mA
SECTION 1	0.15	R15	25	50	450	0.065	1538
	0.18	R18	25	50	425	0.070	1480
	0.22	R22	25	50	400	0.075	1430
	0.27	R27	25	50	380	0.085	1340
	0.33	R33	25	50	360	0.095	1270
	0.39	R39	25	50	330	0.11	1180
	0.47	R47	25	50	300	0.12	1130
	0.56	R56	25	50	280	0.14	1050
	0.68	R68	25	45	260	0.16	980
	0.82	R82	25	45	235	0.26	769
	1.0	1R0	25	45	210	0.30	716
	1.2	1R2	7.9	32	190	0.50	554
	1.5	1R5	7.9	32	170	0.60	506
	1.8	1R8	7.9	32	156	0.75	453
	2.2	2R2	7.9	32	140	1.1	374
	2.7	2R7	7.9	32	125	1.4	331
3.3	3R3	7.9	32	115	1.9	285	
SECTION 2	3.9	3R9	7.9	45	785	0.25	784
	4.7	4R7	7.9	45	65	0.35	663
	5.6	5R6	7.9	45	60	0.40	620
	6.8	6R8	7.9	45	55	0.55	529
	8.2	8R2	7.9	45	50	0.75	453
	10	100	7.9	45	45	0.9	413
	12	120	2.5	55	40	1.1	374
	15	150	2.5	55	35	1.5	320
	18	180	2.5	55	30	2.7	239
	22	220	2.5	55	27	3.0	226
	27	270	2.5	55	25	4.5	185
	33	330	2.5	55	22	5.2	172
	39	390	2.5	55	20	7.5	143
47	470	2.5	55	18	9.6	126	
SECTION 3	56	560	2.5	55	11	8.1	138
	68	680	2.5	55	10	9.0	131
	82	820	2.5	50	8.5	10.0	124
	100	101	2.5	50	7.0	11.0	118
	120	121	0.79	40	6.5	12.0	113
	150	151	0.79	40	5.5	13.0	109
	180	181	0.79	45	5.0	15.0	101
	220	221	0.79	45	4.2	17.0	95
	270	271	0.79	45	3.8	19.5	89
	330	331	0.79	45	3.3	22.0	84
	390	391	0.79	45	3.1	24.5	79
	470	471	0.79	45	2.9	26.5	76
	560	561	0.79	45	2.7	30.0	72
	680	681	0.79	45	2.5	33.0	68
820	821	0.79	45	2.3	36.5	65	
1000	102	0.79	40	2.2	40.0	62	

NB Section 1 was formerly the Meggitt Citec C10 Series
 Section 2 was formerly the Meggitt Citec C11 Series
 Section 3 was formerly the Meggitt Citec C12 Series

Specification

Tape and Reel Specification

SC10 xxx T ~ 500 pieces Ammo Packed
 SC10 xxx R ~ 1500 pieces Reeled

Axial RF Inductors

small size - high current style

Specification

Electrical ~ SC15 Style

Inductance Value - μ H	Inductance Code	Test Freq. (MHz)	Q Factor Minimum	Minimum SRF (MHz)	Maximum DC Resistance at 20°C	Direct Current at 70°C Max. (mA)
0.15	R15	25	50	525	0.030	2790
0.18	R18	25	45	480	0.040	2420
0.22	R22	25	50	450	0.055	2060
0.27	R27	25	45	400	0.070	1830
0.33	R33	25	45	360	0.090	1610
0.39	R39	25	45	350	0.100	1530
0.47	R47	25	45	310	0.120	1400
0.56	R56	25	50	280	0.135	1320
0.68	R68	25	50	250	0.15	1250
0.82	R82	25	50	220	0.22	1030
1.0	1R0	25	50	200	0.29	900
1.2	1R2	7.9	33	180	0.42	750
1.5	1R5	7.9	33	160	0.50	685
1.8	1R8	7.9	33	150	0.65	600
2.2	2R2	7.9	33	135	0.95	495
2.7	2R7	7.9	33	120	1.20	440
3.3	3R3	7.9	33	110	2.00	340
3.9	3R9	7.9	33	100	2.30	320
4.7	4R7	7.9	33	90	2.60	300
5.6	5R6	7.9	45	60	0.32	690
6.8	6R8	7.9	50	55	0.50	550
8.2	8R2	7.9	50	50	0.60	505
10	100	7.9	55	45	0.90	415
12	120	2.5	65	42	1.10	375
15	150	2.5	65	40	1.40	330
18	180	2.5	75	34	2.25	260
22	220	2.5	75	30	2.50	250
24*	240*	2.5	60	27	2.50	250
27	270	2.5	60	25	2.60	242
30	300	2.5	65	21	2.80	230
33	330	2.5	65	19	3.00	227
36*	360*	2.5	60	15.5	2.50	250
39	390	2.5	60	14.5	2.60	244
43*	430*	2.5	60	13.7	2.70	238
47	470	2.5	55	13.0	2.75	235
51*	510*	2.5	55	12.7	2.85	231
56	560	2.5	55	12.0	3.00	225
62*	620*	2.5	55	11.5	3.15	220
68	680	2.5	55	11.0	3.30	215
75*	750*	2.5	55	10.5	3.70	203
82	820	2.5	50	10.3	3.90	200
91*	910*	2.5	50	10.0	4.30	188
100	101	2.5	50	9.5	4.50	185
110*	111*	0.79	60	8.9	4.90	176
120	121	0.79	65	8.7	5.20	170
130*	131*	0.79	65	8.5	5.45	167
150	151	0.79	65	8.0	6.05	160
160*	161*	0.79	65	7.5	6.40	154
180	181	0.79	65	7.0	6.75	150
200*	201*	0.79	65	6.5	7.10	147
220	221	0.79	65	6.2	7.45	144
240*	241*	0.79	65	5.9	7.80	140
270	271	0.79	65	5.7	9.00	131
300*	301*	0.79	65	5.4	11.50	118
330	331	0.79	65	5.1	12.50	111

Starred Items have a standard tolerance of 5% not 10%

Specification

Tape and Reel Specification

SC15 xxx T ~ 500 pieces Ammo Packed
 SC15 xxx R ~ 1500 pieces Reeled

type SC10/SC15/ SC30 series

Meggitt Sigma quality and reliability are guaranteed in this range of insulated and shielded RF Inductors. The insulated range has a self-extinguishing polyolefin sleeve. Their small size make them ideal for use when space is at a premium. And they are also fully protected from environmental factors. Electrostatic and electromagnetic screening is provided by the magnetic enclosure. A wide range of values are available and the self-extinguishing polyolefin sleeve enhances environmental protection. The SC series was originally designed for military applications but now has widespread industrial use.

Through Hole Inductors

sales action desk (01793) 611666
sales fax line (01793) 611777
e-mail sales@megelec.co.uk

Meggitt Sigma

mall size - high current style

Specification

Electrical ~ SC30 Style

Inductance Value - μ H	Inductance Code	Test Frequency MHz	Q Factor Minimum	Minimum SRF MHz	Maximum DC Resistance at 20°C	Direct Current at 70°C - Maximum mA
0.10	R10	25	35	625	0.08	1240
0.12	R12	25	35	590	0.09	1170
0.15	R15	25	35	550	0.10	1110
0.18	R18	25	35	500	0.12	1010
0.22	R22	25	33	470	0.14	940
0.27	R27	25	33	400	0.16	880
0.33	R33	25	30	380	0.22	750
0.39	R39	25	30	350	0.30	640
0.47	R47	25	30	310	0.35	590
0.56	R56	25	30	280	0.50	495
0.68	R68	25	28	250	0.60	450
0.82	R82	25	28	230	0.85	380
1.0	1R0	25	25	210	1.0	350
1.2	1R2	7.9	25	140	0.18	830
1.5	1R5	7.9	28	130	0.22	750
1.8	1R8	7.9	30	115	0.30	640
2.2	2R2	7.9	30	105	0.40	550
2.7	2R7	7.9	37	92	0.55	470
3.3	3R3	7.9	45	83	0.85	380
3.9	3R9	7.9	45	73	1.0	350
4.7	4R7	7.9	45	69	1.2	320
5.6	5R6	7.9	50	60	1.8	260
6.8	6R8	7.9	50	55	2.0	250
8.2	8R2	7.9	55	50	2.7	215
10	100	7.9	55	46	3.7	180
12	120	2.5	45	37	2.7	215
15	150	2.5	45	32	2.8	210
18	180	2.5	50	28	3.1	200
22	220	2.5	50	23	3.3	195
27	270	2.5	50	18	3.5	188
33	330	2.5	45	20	3.4	190
39	390	2.5	45	19	3.6	185
47	470	2.5	45	17	4.5	165
56	560	2.5	45	15	5.2	148
68	680	2.5	50	13	6.7	136
82	820	2.5	50	12	7.3	130
100	101	2.5	50	11	8.0	124
120	121	0.79	30	10	13.0	97
150	151	0.79	30	9.0	15.0	91
180	181	0.79	30	8.5	17.0	85
220	221	0.79	30	7.5	21.0	77
270	271	0.79	30	6.8	25.0	70
330	331	0.79	30	6.0	28.0	66
390	391	0.79	30	5.5	35.0	59
470	471	0.79	30	5.1	42.0	54
560	561	0.79	30	4.2	46.0	52
680	681	0.79	30	3.4	60.0	45
820	821	0.79	30	3.2	65.0	43
1000	102	0.79	30	2.9	72.0	41

NB The SC30 Series was formerly the Meggitt Citec C30 Series

Specification

Tape and Reel Specification

SC30 xxx T ~ 500 pieces Ammo Packed
 SC30 xxx R ~ 2500 pieces Reeled

How To Order

SC10	1R5	K	T
Series Number	Inductance Code	Tolerance	Tape and Reel
SC10 - Axial RF Inductor SC15 - Axial RF Inductor SC30 - Axial RF Inductor	See relevant table for inductance code	M - \pm 20% K - \pm 10%	T - Ammo Packed R - Reeled