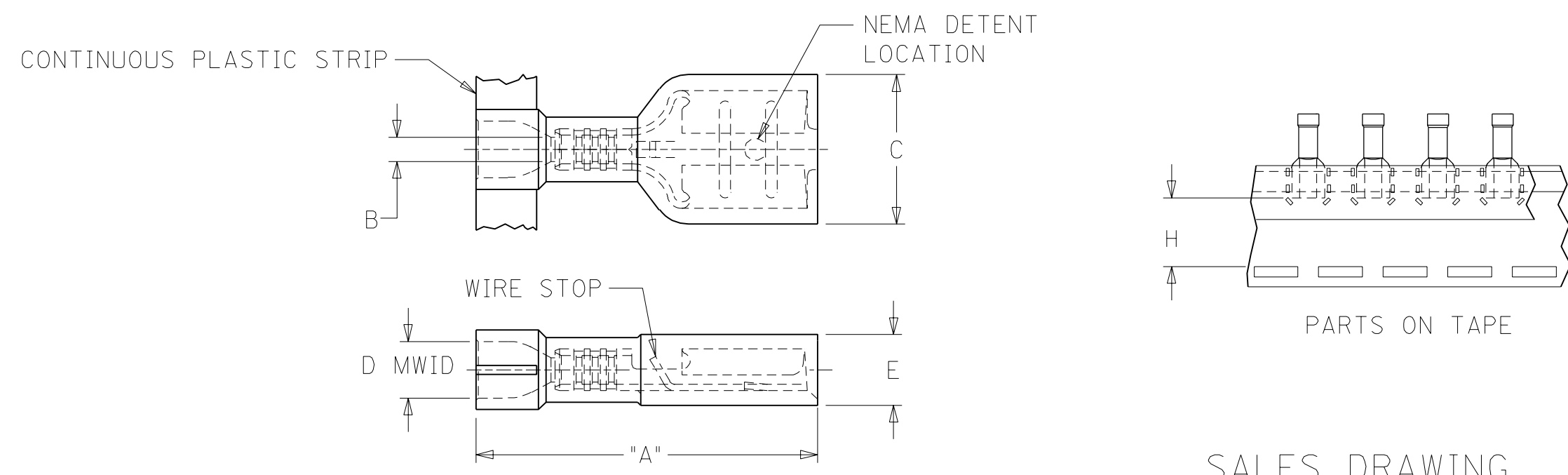


10	9	8	7	6	5	4	3	2								
LOOSE PIECE MATERIAL NUMBER	LOOSE PIECE ENGINEERING NUMBER	CONTINUOUS STRIP MATERIAL NUMBER	CONTINUOUS STRIP ENGINEERING NUMBER	MYLAR TAPE MATERIAL NUMBER	MYLAR TAPE ENGINEERING NUMBER	WIRE RANGE AWG	FITS MALE TAB SIZE	INSULATION COLOR	STOCK THICK.	"A" MAX.	"B" MIN.	"C" MAX.	"D" MWID	"E" MAX.	"H" ±.010	
F	190030071	M-2212	190030106	M-2212C	190030073	M-2212T	26-24	.250x.032	YELLOW	.016	.86	.030	.380	.075	.180	.560
	190030064	M-2210	190030103	M-2210C	190030067	M-2210T	26-24	.187x.020	YELLOW	.016	.78	.030	.316	.075	.160	.600
	190030068	M-2211	190030104	M-2211C	190030070	M-2211T	26-24	.187x.032	YELLOW	.016	.78	.030	.316	.075	.160	.600
	190030001	AA-2201	190030105	AA-2201C	190030003	AA-2201T	22-18	.250x.032	RED	.016	.86	.058	.380	.135	.180	.560
	190030036	AA-2213	190030109	AA-2213C	190030074	AA-2213T	22-18	.205x.020	RED	.016	.78	.058	.316	.135	.160	.600
	190030038	AA-2214	190030110	AA-2214C	190030075	AA-2214T	22-18	.205x.032	RED	.016	.78	.058	.316	.135	.160	.600
	190030011	AA-2202	190030107	AA-2202C	190030013	AA-2202T	22-18	.187x.020	RED	.016	.78	.058	.316	.135	.160	.600
	190030017	AA-2203	190030108	AA-2203C	190030020	AA-2203T	22-18	.187x.032	RED	.016	.78	.058	.316	.135	.160	.600
E	190030024	AA-2204	190030097	AA-2204C	190030026	AA-2204T	22-18	.110x.020	RED	.012	.78	.058	.230	.135	.150	.615
	190030030	AA-2205	190030098	AA-2205C	190030032	AA-2205T	22-18	.110x.032	RED	.012	.78	.058	.230	.135	.150	.615
	190030040	BB-2206	190030041	BB-2206C	190030042	BB-2206T	16-14	.250x.032	BLUE	.016	.86	.083	.380	.160	.180	.560
	190030062	BB-2215	190030085	BB-2215C	190030077	BB-2215T	16-14	.205x.020	BLUE	.016	.78	.083	.316	.160	.170	.600
	190030063	BB-2216	190030086	BB-2216C	190030078	BB-2216T	16-14	.205x.032	BLUE	.016	.78	.083	.316	.160	.170	.600
	190030050	BB-2207	190030051	BB-2207C	190030052	BB-2207T	16-14	.187x.020	BLUE	.016	.78	.083	.316	.160	.170	.600
	190030056	BB-2208	190030057	BB-2208C	190030058	BB-2208T	16-14	.187x.032	BLUE	.016	.78	.083	.316	.160	.170	.600
D	196060002	19606-0002	196060001	19606-0001	196060003	19606-0003	12-10	.250x.032	YELLOW	.018	1.03	.120	.380	.240	.220	.508



SALES DRAWING

1. MATERIAL: TERMINAL: BRASS
 PLATING: ELECTRO-TIN
 FERRULE: BRASS
 PLATING: ELECTRO-TIN
 INSULATION: NYLON 6/6 94V-2.
 COLOR: SEE CHART
 2. MWID = MAXIMUM WIRE INSULATION DIAMETER

WAS CD-2905 EC NO. ETC2002-0251 DRWN: BRE 02/03/22 CHK: HEB 02/03/22 APPR: RWD 02/03/22	QUALITY SYMBOLS MAJOR $\blacktriangle = 0$ CRITICAL $\triangle = 0$	GENERAL TOLERANCES: (UNLESS SPECIFIED) mm INCH 4 PLACES $\pm 0.$ $\pm .$ 3 PLACES $\pm 0.$ $\pm .$ 2 PLACES $\pm 0.$ $\pm .$ 1 PLACE $\pm 0.$ $\pm .$ ANGULAR: $\pm 1/2^\circ$	SCALE NO: NE DESIGN UNITS <input type="checkbox"/> mm <input checked="" type="checkbox"/> INCH THIRD ANGLE PROJECTION	DIMENSIONS: <input type="checkbox"/> mm <input checked="" type="checkbox"/> INCH <input type="checkbox"/> mm ONLY	SHT REV REVISE ON CAD ONLY
	DRAWN BY & DATE BRE 02/03/20	TITLE: INSULKRIMP FEMALE F.I.Q.D. STANDARD FLARE			
	CHECKED BY & DATE HEB 02/03/20	MOLEX INCORPORATED			
	APPROVED BY & DATE RWD 02/03/20	CAD FILENAME SD-19003-005 .DGN	MATERIAL NO. DRAWING NO. SHEET NO. SEE CHART SD-19003-005 1 OF 1		
DRAFT WHERE APPLICABLE MUST REMAIN WITHIN DIMENSIONS THIS DRAWING CONTAINS INFORMATION THAT IS PROPRIETARY TO MOLEX INCORPORATED AND SHOULD NOT BE USED WITHOUT WRITTEN PERMISSION.					