

TD62382AFNG

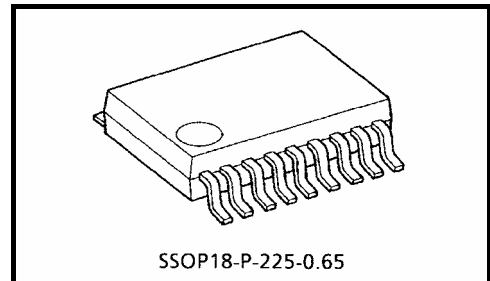
8ch Low Input Active Darlington Sink Driver

The TD62382AFNG is non-inverting transistor array which is comprised of eight Low saturation output stages and PNP input stages.

This device can be operated by source input voltage and is suitable for operation with a 5-V general purposed logic IC such as TTL, 5-V CMOS and 5-V Microprocessor which have sink current output drivers.

Applications include relay, hammer, lamp and LED display drivers.

Please observe the thermal condition for using.



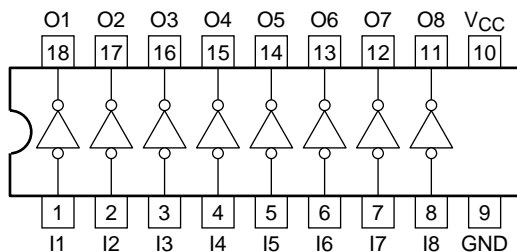
SSOP18-P-225-0.65

Weight: 0.09 g (typ.)

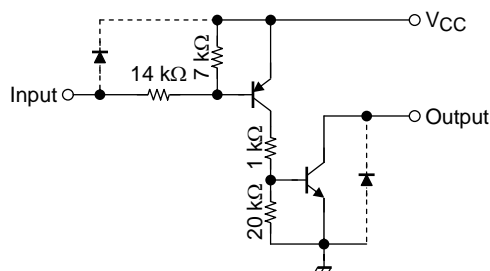
Features

- Low Saturation Output: 0.23 V (max)
@ $I_{out} = 40 \text{ mA (max)}$
- Package type: SSOP18 pin (0.65 mm pitch)
- Output rating: 50 V (min)/50 mA (max)
- Low level active input
- Input compatible with TTL and 5-V CMOS
- Standard supply voltage

Pin Assignment (top view)



Schematics (each driver)



Note: The input and output parasitic diodes cannot be used as clamp diodes.

Maximum Ratings (Ta = 25°C)

Characteristics	Symbol	Rating	Unit
Supply voltage	V _{CC}	−0.5~7.0	V
Output sustaining voltage	V _{CE (SUS)}	−0.5~50	V
Output current	I _{OUT}	50	mA/ch
Input voltage	V _{IN}	−22~V _{CC} + 0.5	V
Input current	I _{IN}	10	mA
Power dissipation	P _D (Note)	0.96	W
Operating temperature	T _{opr}	−40~85	°C
Storage temperature	T _{stg}	−55~150	°C

Note: On Glass Epoxy PCB (50 × 50 × 1.6 mm Cu 40%)

Recommended Operating Conditions (Ta = −40~85°C)

Characteristics	Symbol	Test Condition	Min	Typ.	Max	Unit
Supply voltage	V _{CC}	—	4.5	5.0	5.5	V
Output sustaining voltage	V _{CE (SUS)}	—	0	—	50	V
Output current	I _{OUT}	DC 1 Circuit	0	—	40	mA/ch
		8 Circuits	0	—	40	
Input voltage	V _{IN}	—	−20	—	V _{CC}	V
	Output on	V _{IN (ON)}	−20	—	V _{CC} − 3.5	
	Output off	V _{IN (OFF)}	V _{CC} − 0.3	—	V _{CC} + 0.5	
Power dissipation	P _D (Note)	—	—	—	0.4	W

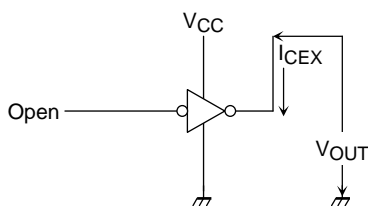
Note: On Glass Epoxy PCB (50 × 50 × 1.6 mm Cu 40%)

Electrical Characteristics (Ta = 25°C)

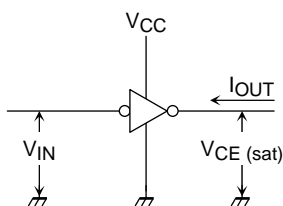
Characteristics	Symbol	Test Circuit	Test Condition	Min	Typ.	Max	Unit
Output leakage current	I _{CEX}	1	V _{CC} = 5.5 V, I _{IN} = 0 A V _{OUT} = 35 V, Ta = 75°C	—	—	100	μA
Output saturation voltage	V _{CE (sat)}	2	V _{CC} = 4.5 V, V _{IN} = 0.8 V I _{OUT} = 40 mA	—	—	0.23	V
Input current	Output on	I _{IN (ON)}	3	V _{CC} = 5.5 V, V _{IN} = 0.4 V	—	−0.32	mA
	Output off	I _{IN (OFF)}	4	V _{CC} = 5.5 V, V _{IN} = −20 V	—	−2.6	
Input voltage (Output on)	V _{IN (ON)}	5	—	−20	—	V _{CC} − 3.5	V
	V _{IN (OFF)}	6	—	—	—	V _{CC} + 0.5	
Supply current	Output on	I _{CC (ON)}	6	V _{CC} = 5.5 V, V _{IN} = 0 V	—	6	mA/ch
	Output off	I _{CC (OFF)}	6	V _{CC} = V _{IN} = 5.5 V Ta = 75°C	—	100	
Turn-on delay	t _{ON}	7	V _{CC} = 5 V C _L = 15 pF	—	0.1	—	μs
Turn-off delay	t _{OFF}						

Test Circuit

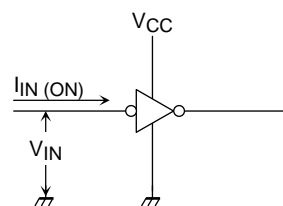
1. I_{CEX}



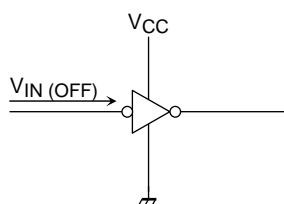
2. $V_{CE(sat)}$



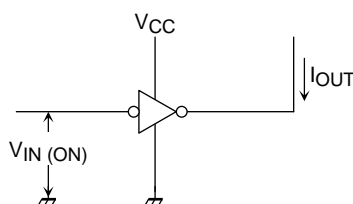
3. $I_{IN(ON)}$



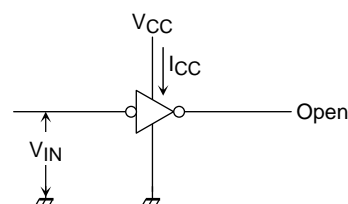
4. $I_{IN(OFF)}$



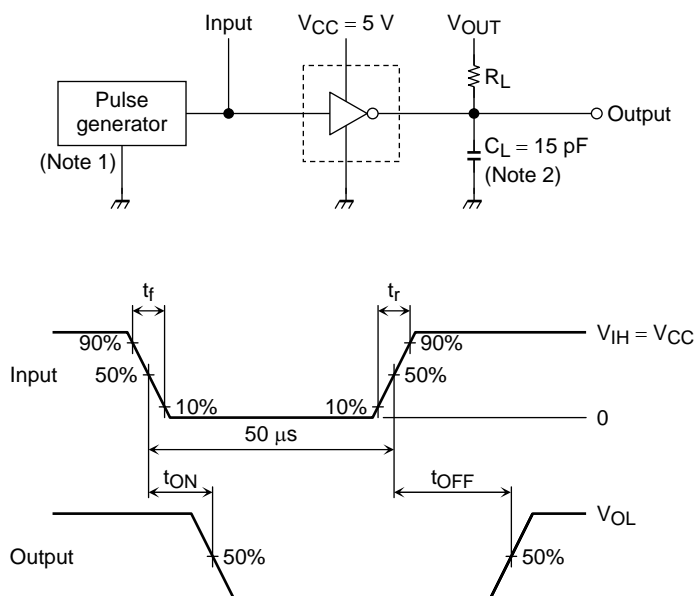
5. $V_{IN(ON)}$



6. I_{CC}



7. t_{ON}, t_{OFF}



Note 1: Pulse width 50 μ s, Duty cycle 10%
Output impedance 50 Ω , $t_r \leq 10$ ns, $t_f \leq 5$ ns

Note 2: C_L includes probe and jig capacitance.

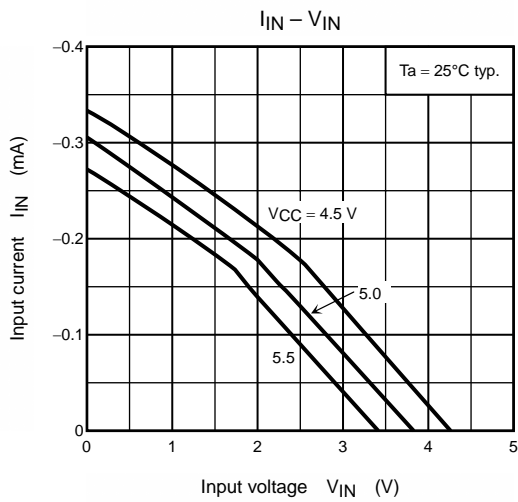
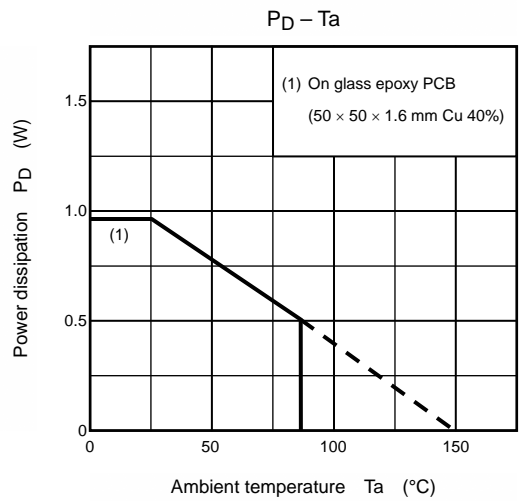
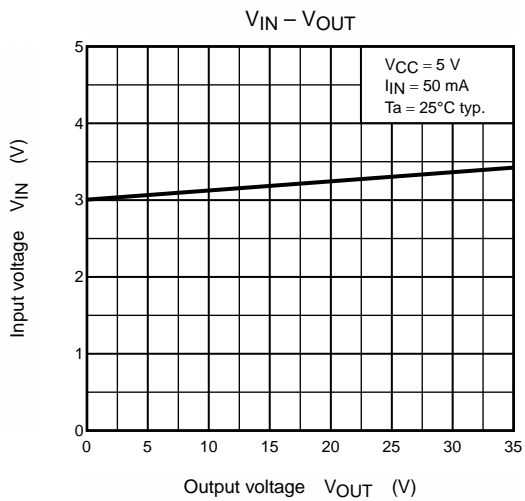
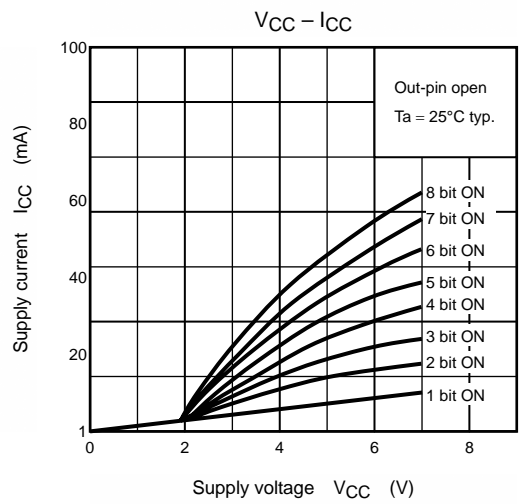
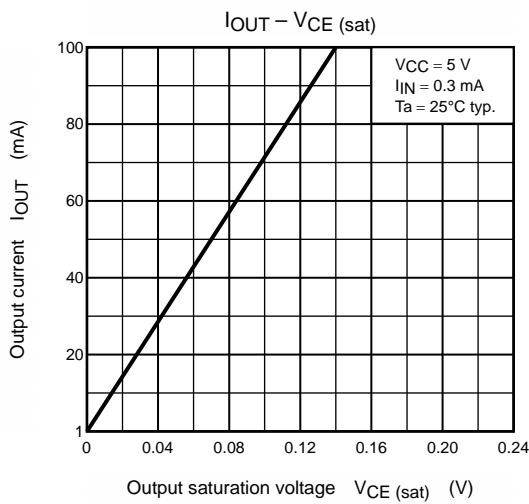
Precautions for Using

This IC does not include built-in protection circuits for excess current or overvoltage.

If this IC is subjected to excess current or overvoltage, it may be destroyed.

Hence, the utmost care must be taken when systems which incorporate this IC are designed.

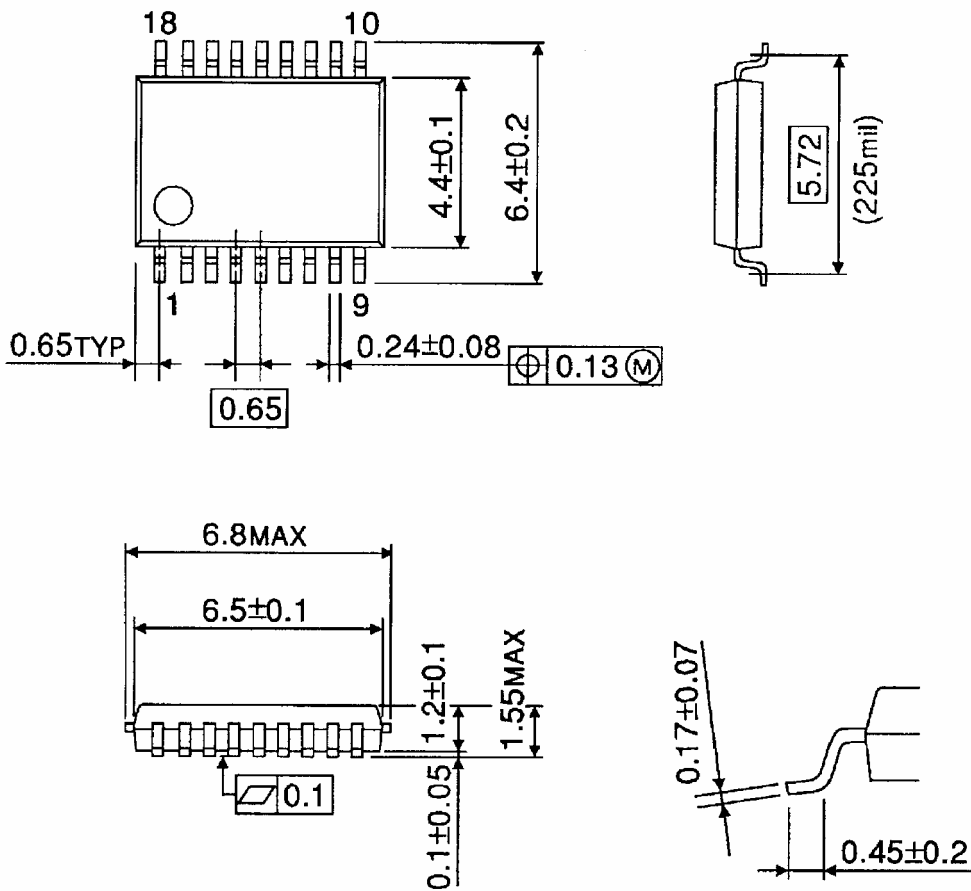
Utmost care is necessary in the design of the output line, V_{CC} and GND line since IC may be destroyed due to short-circuit between outputs, air contamination fault, or fault by improper grounding.



Package Dimensions

SSOP18-P-225-0.65

Unit : mm



Weight: 0.09 g (typ.)

About solderability, following conditions were confirmed

- Solderability

- (1) Use of Sn-63Pb solder Bath

- solder bath temperature = 230°C
 - dipping time = 5 seconds
 - the number of times = once
 - use of R-type flux

- (2) Use of Sn-3.0Ag-0.5Cu solder Bath

- solder bath temperature = 245°C
 - dipping time = 5 seconds
 - the number of times = once
 - use of R-type flux

RESTRICTIONS ON PRODUCT USE

030619EBA

- The information contained herein is subject to change without notice.
- The information contained herein is presented only as a guide for the applications of our products. No responsibility is assumed by TOSHIBA for any infringements of patents or other rights of the third parties which may result from its use. No license is granted by implication or otherwise under any patent or patent rights of TOSHIBA or others.
- TOSHIBA is continually working to improve the quality and reliability of its products. Nevertheless, semiconductor devices in general can malfunction or fail due to their inherent electrical sensitivity and vulnerability to physical stress. It is the responsibility of the buyer, when utilizing TOSHIBA products, to comply with the standards of safety in making a safe design for the entire system, and to avoid situations in which a malfunction or failure of such TOSHIBA products could cause loss of human life, bodily injury or damage to property.
In developing your designs, please ensure that TOSHIBA products are used within specified operating ranges as set forth in the most recent TOSHIBA products specifications. Also, please keep in mind the precautions and conditions set forth in the "Handling Guide for Semiconductor Devices," or "TOSHIBA Semiconductor Reliability Handbook" etc..
- The TOSHIBA products listed in this document are intended for usage in general electronics applications (computer, personal equipment, office equipment, measuring equipment, industrial robotics, domestic appliances, etc.). These TOSHIBA products are neither intended nor warranted for usage in equipment that requires extraordinarily high quality and/or reliability or a malfunction or failure of which may cause loss of human life or bodily injury ("Unintended Usage"). Unintended Usage include atomic energy control instruments, airplane or spaceship instruments, transportation instruments, traffic signal instruments, combustion control instruments, medical instruments, all types of safety devices, etc.. Unintended Usage of TOSHIBA products listed in this document shall be made at the customer's own risk.
- The products described in this document are subject to the foreign exchange and foreign trade laws.
- TOSHIBA products should not be embedded to the downstream products which are prohibited to be produced and sold, under any law and regulations.