

CS51227

Enhanced Voltage Mode PWM Controller

The CS51227 is a fixed frequency, single output PWM controller using feed forward voltage mode control. Feed forward control provides superior line regulation and line transient response. This PWM controller has been optimized for high frequency primary side control operation. It has undervoltage lockout with 4.7 V start up voltage and 75 μ A start up current. One external capacitor can program the switching frequency up to 1.0 MHz. The protection features include pulse-by-pulse current limit with leading edge blanking and thermal shutdown. The CS51227 is available in 8 lead SO narrow surface mount package.

Features

- 1.0 MHz Frequency Capability
- 4.7 V Start-Up Voltage
- Fixed Frequency Voltage Mode Operation with Feed Forward
- Undervoltage Lockout
- 75 μ A Start-Up Current
- Thermal Shutdown
- 1.0 A Sink/Source Gate Drive
- Pulse-By-Pulse Current Limit with Leading Edge Blanking
- 50 ns GATE Rise and Fall Time (1.0 nF Load)
- Maximum Duty Cycle Over 85%
- Programmable Volt-Second Clamp



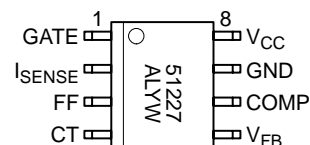
ON Semiconductor™

<http://onsemi.com>



**SO-8
D SUFFIX
CASE 751**

PIN CONNECTIONS AND MARKING DIAGRAM



A = Assembly Location
WL, L = Wafer Lot
YY, Y = Year
WW, W = Work Week

ORDERING INFORMATION

Device	Package	Shipping
CS51227ED8	SO-8	95 Units/Rail
CS51227EDR8	SO-8	2500 Tape & Reel

CS51227

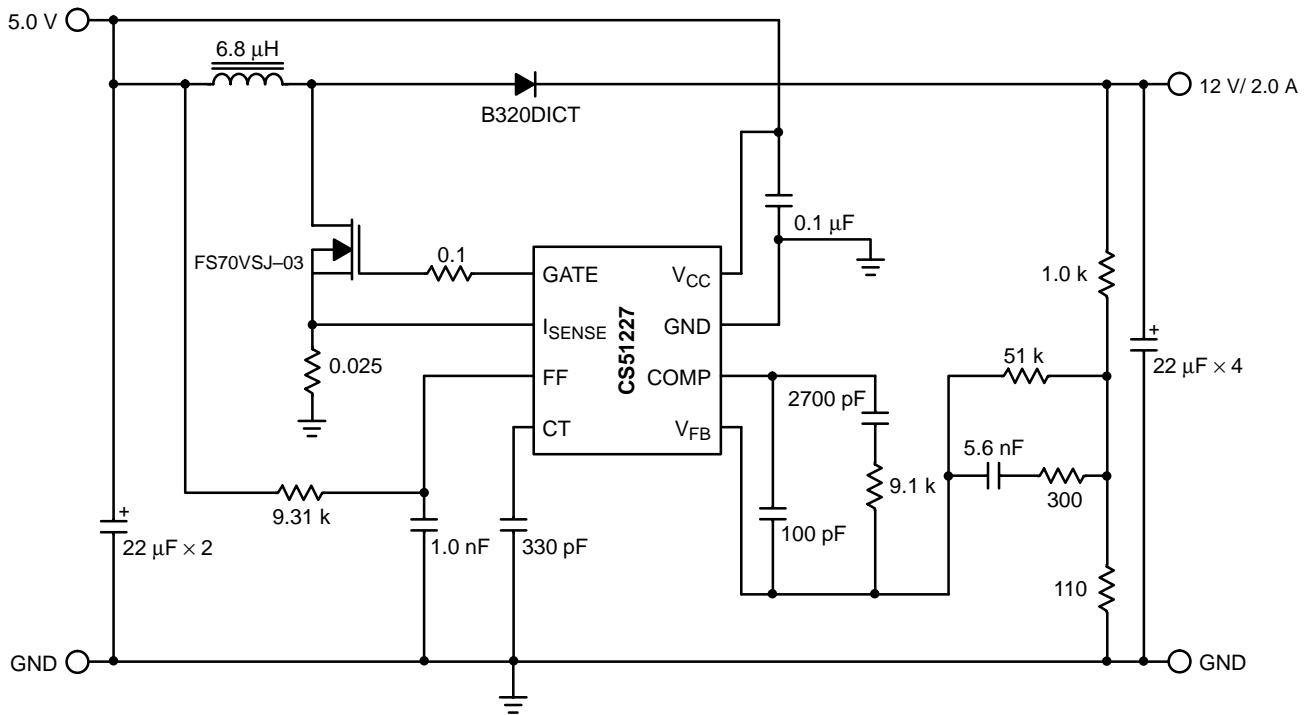


Figure 1. Applications Diagram, 5.0 V to 12 V/2.0 A Boost Converter

MAXIMUM RATINGS*

Rating	Value	Unit
Operating Junction Temperature, T_J	150	°C
Storage Temperature Range, T_S	-65 to +150	°C
ESD Susceptibility (Human Body Model)	2.0	kV
Lead Temperature Soldering:	Reflow: (SMD styles only) (Note 1)	230 peak

1. 60 second maximum above 183°C.

*The maximum package power dissipation must be observed.

MAXIMUM RATINGS

Pin Name	Pin Symbol	V_{MAX}	V_{MIN}	I_{SOURCE}	I_{SINK}
Gate Drive Output	GATE	20 V	-0.3 V	1.0 A Peak, 200 mA DC	1.0 A Peak, 200 mA DC
Current Sense Input	I_{SENSE}	6.0 V	-0.3 V	1.0 mA	1.0 mA
Timing Capacitor	CT	6.0 V	-0.3 V	1.0 mA	10 mA
Feed Forward	FF	6.0 V	-0.3 V	1.0 mA	25 mA
Error Amp Output	COMP	6.0 V	-0.3 V	10 mA	20 mA
Feedback Voltage	V_{FB}	6.0 V	-0.3 V	1.0 mA	1.0 mA
Power Supply	V_{CC}	20 V	-0.3 V	10 mA	1.0 A Peak, 200 mA DC
Ground	GND	N/A	N/A	1.0 A Peak, 200 mA DC	N/A

CS51227

ELECTRICAL CHARACTERISTICS: ($-40^{\circ}\text{C} < T_A < 85^{\circ}\text{C}$, $-40^{\circ}\text{C} < T_J < 125^{\circ}\text{C}$, $4.7\text{ V} < V_{CC} < 18\text{ V}$

$C_T = 390\text{ pF}$; unless otherwise specified.)

Characteristic	Test Conditions	Min	Typ	Max	Unit
----------------	-----------------	-----	-----	-----	------

Start/Stop Voltages

Start Threshold	–	4.4	4.5	4.7	V
Stop Threshold	–	3.2	3.8	4.2	V
Hysteresis	Start – Stop	300	700	1400	mV
I_{CC} @ Startup	$V_{CC} < \text{UVL Start Threshold}$	–	38	75	μA

Supply Current

I_{CC} Operating	No Load	–	10	16	mA
--------------------	---------	---	----	----	----

Overcurrent Protection

Overcurrent Threshold	Ramp I_{SENSE}	0.27	0.30	0.33	V
I_{SENSE} to GATE Delay	$V_{FB} = 0.5\text{ V}$ (no blanking)	–	60	125	ns

Error Amp

Reference Voltage	V_{FB} connected to COMP	1.234	1.263	1.285	V
V_{FB} Input Current	$V_{FB} = 1.25\text{ V}$	–	1.3	2.0	μA
Open Loop Gain	Note 2	60	90	–	dB
Unity Gain Bandwidth	Note 2	1.5	2.5	–	MHz
COMP Sink Current	COMP = 1.4 V, $V_{FB} = 1.45\text{ V}$	3.0	12	32	mA
COMP Source Current	COMP = 1.4 V, $V_{FB} = 1.15\text{ V}$	1.0	1.7	2.4	mA
COMP High Voltage	$V_{FB} = 1.15\text{ V}$	2.8	3.1	3.4	V
COMP Low Voltage	$V_{FB} = 1.45\text{ V}$	75	150	300	mV
PSRR	Freq = 120 Hz, Note 2	60	85	–	dB

Oscillator

Frequency Accuracy	–	200	235	270	kHz
Max Duty Cycle	–	85	90	95	%
Peak Voltage	Note 2	1.99	2.05	2.11	V
Valley Clamp Voltage	–	0.90	0.95	1.00	V
Valley Voltage	Note 2	0.90	0.95	1.00	V
Discharge Current	–	0.85	1.00	1.15	mA
Charge Current	–	95	115	135	μA

Gate Driver

High Saturation Voltage	$V_{CC} - V_{GATE}$, $V_{CC} = 10\text{ V}$, $I_{SOURCE} = 150\text{ mA}$	–	1.5	2.0	V
Low Saturation Voltage	V_{GATE} , $I_{SINK} = 150\text{ mA}$	–	1.2	1.5	V
High Voltage Clamp	–	11	13.5	16	V
Output UVL Leakage	$V_{GATE} = 0\text{ V}$	–	1.0	50	μA
Rise Time	1.0 nF Load, $V_{CC} = 18\text{ V}$, $1.0\text{ V} < V_O < 9.0\text{ V}$	–	32	50	ns
Fall Time	1.0 nF Load, $V_{CC} = 18\text{ V}$, $9.0\text{ V} < V_O < 1.0\text{ V}$	–	25	50	ns
Max GATE Voltage @ UVL	$I_{LOAD} = 100\text{ }\mu\text{A}$	0.4	0.7	1.5	V

2. Guaranteed by design, not 100% tested in production.

CS51227

ELECTRICAL CHARACTERISTICS: (continued) ($-40^{\circ}\text{C} < T_A < 85^{\circ}\text{C}$, $-40^{\circ}\text{C} < T_J < 125^{\circ}\text{C}$, $4.7\text{ V} < V_{CC} < 18\text{ V}$)

$C_T = 390\text{ pF}$; unless otherwise specified.)

Characteristic	Test Conditions	Min	Typ	Max	Unit
----------------	-----------------	-----	-----	-----	------

Feed Forward (FF)

Discharge Voltage	$I_{FF} = 2.0\text{ mA}$	–	0.3	0.7	V
Discharge Current	$FF = 1.0\text{ V}$	2.0	16	30	mA
FF to GATE Delay	–	50	75	125	ns
FF Max VOLTage	$V_{FB} = 1.15\text{ V}$	1.7	1.8	1.9	V

Blanking

Blanking Time	–	50	150	250	ns
COMP Blanking Disable Threshold	$V_{FB} < 1.0\text{ V}$	2.8	3.0	3.3	V

Thermal Shutdown

Thermal Shutdown	Note 3	125	150	180	$^{\circ}\text{C}$
Thermal Hysteresis	Note 3	5.0	10	15	$^{\circ}\text{C}$

3. Guaranteed by design, not 100% tested in production.

PACKAGE PIN DESCRIPTION

PACKAGE LEAD #	LEAD SYMBOL	FUNCTION
SO-8		
1	GATE	External power switch driver with 1.0 A peak capability. Rail-to-rail output occurs when the capacitive load is between 470 pF and 10 nF.
2	I_{SENSE}	Current sense comparator input.
3	FF	PWM ramp.
4	CT	Timing capacitor C_T determines oscillator frequency.
5	V_{FB}	Feedback voltage input. Connected to the error amplifier inverting input.
6	COMP	Error amplifier output.
7	GND	Ground.
8	V_{CC}	Supply voltage.

THEORY OF APPLICATION

Feed Forward Voltage Mode Control

[illegible]

<http://onsemi.com>

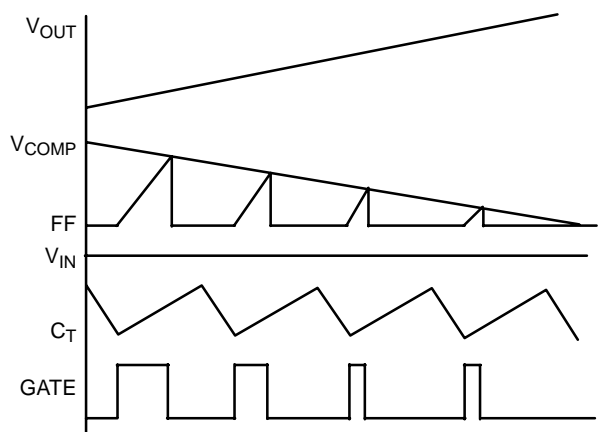


Figure 4. Pulse Width Modulated By Output Current With Constant Input Voltage

Overall, the dynamics of the duty cycle are controlled by both input and output voltages. As shown in Figure 4, an elevated output voltage reduces V_{COMP} through the error amplifier. This in turn decreases the duty cycle and corrects the deviation of the output voltage. For line variation, the ramp signal responds immediately, which provides much improved line transient response. The delay associated with the power stage and feedback path has been totally avoided. As an example, shown in Figure 5, when the input line goes up, the slope of the ramp signal increases, reducing duty cycle to counteract the change.

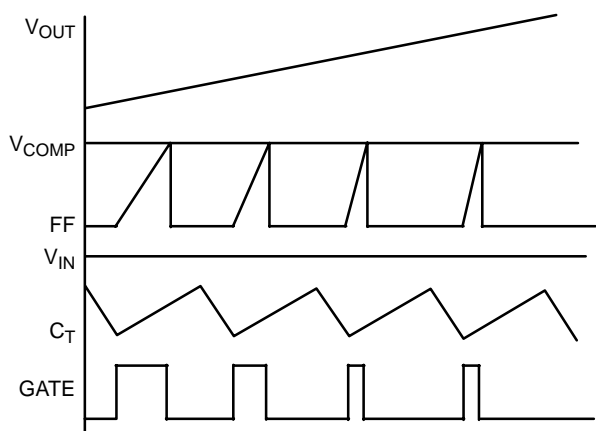


Figure 5. Pulse Width Modulated By Input Voltage With Constant Output Voltage

The feed forward feature can also be employed to implement volt-second clamping, which limits the maximum product of input voltage and turn on time. This clamp is used in circuits, such as Forward and Flyback converters, to prevent the transformer from saturating. The calculation for volt-second clamping is presented in the Design Guidelines section.

Powering the IC & UVL

The internal logic monitors the supply voltage to ensure the controller has enough operating headroom. The V_{REF} block provides power to the controller's logic. The $V_{REF(OK)}$ comparator monitors the internal 3.3 V V_{REF} line and flags a fault if V_{REF} falls below 3.1 V.

The Undervoltage Lockout (UVL) comparator has two voltage references; the start and stop thresholds. During power-up, the UVL comparator disables V_{REF} (which in-turn disables the entire IC) until the controller reaches its V_{CC} start threshold. During power-down, the UVL comparator allows the controller to operate until the V_{CC} stop threshold is reached. The CS51227 requires only 50 μ A during startup. During low V_{CC} and abnormal operation conditions, the output stage is held at a low level, low impedance state.

Current Sense and Over Current Protection

The I_{SENSE} pin monitors the switch current for pulse by pulse current limit. When the I_{SENSE} pin voltage exceeds the internal threshold (0.3 V typical), the current limit comparator immediately turns off the Gate signal. The Gate will then stay off for the remainder of the cycle. Various techniques, such as using current sensing resistor or current transformer, are widely adopted to generate the current signal.

The current sense signal is prone to leading edge spikes caused by switching transitions. A RC low-pass filter can effectively reduce the spikes and avoid premature triggering. However, the low pass filter will inevitably change the shape of the current pulse and also add cost. The CS51227 has built-in leading edge blanking circuitry that blocks out the first 150 ns (typ) of each current pulse. This feature removes the leading edge spikes without altering the current waveform. Blanking is disabled when the COMP pin voltage exceeds 3.0 V (typ). This feature reduces the minimum duty cycle during an output short or overload condition.

DESIGN GUIDELINES

Programming Oscillator Frequency

The switching frequency is set by the capacitor connected to the C_T pin. The C_T pin voltage oscillates between 1.0 V and 2.0 V. The ratio of the charge and discharge currents sets the maximum duty cycle to be 90%. Use the following equation to select C_T .

$$C_T = \frac{9.027 \times 10^7}{f_s}$$

where:

f_s = Switching frequency

C_T = Capacitance in pF

When C_T is less than 100 pF, parasitic capacitance associated with the C_T pin starts to impact frequency accuracy. Figure 6 shows typical oscillator frequency vs. C_T value.

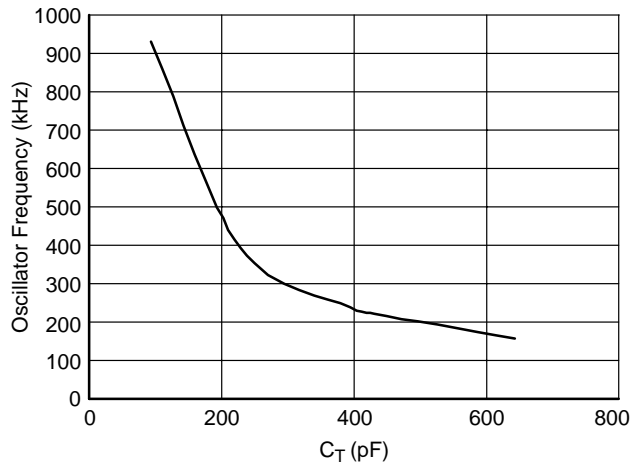


Figure 6. Typical Performance Characteristics: Oscillator Frequency vs. C_T

Component Selection for Feed Forward Ramp

FF discharge voltage and FF maximum voltage limit the maximum voltage rise on the FF pin to 1.5 V typical. This provides the volt-second clamp feature when the FF pin is driven by the input line. If the line voltage is much greater than the FF pin voltage, the charge current is approximately equal to V_{IN}/R where R is the resistor connecting the FF pin and input line. The voltage second clamp then has the form of:

$$V_{IN} \times T_{ON} = 1.5 \times R \times C_{FF}$$

One can select RC_{FF} to prevent magnetic devices from saturating.

In a buck or forward converter, the error amplifier output V_{COMP} is equal to:

$$V_{COMP} = \frac{V_{OUT} \times T_S}{N \times R \times C_{FF}} + 0.3V$$

where:

N = Transformer turns ratio (use 1 for buck converter)

T_S = Switching period

This equation shows that the error amplifier output is independent of the input voltage. Therefore, the system does not rely on the error amplifier to respond to line variations. This excludes the delay associated with the error amplifier. The line regulation is also greatly improved because both

error amplifier and ramp signal can contribute to DC regulation.

Select Feedback Voltage Divider

As shown in Figure 7, the voltage divider output feeds the FB pin which connects to the inverting input of the error amplifier. The non-inverting input of the error amplifier is connected to a 1.263 V reference voltage. The FB pin has an input current which has to be taken into account for accurate output voltage programming. The following equation can be used to calculate the $R1$ and $R2$ value:

$$\frac{R2}{R1 + R2} \times V_{OUT} = 1.263 - \nabla$$

where ∇ is the correction factor

$$\nabla = (R_i + R1 // R2) \times I_{er}$$

R_i = DC resistance between the FB pin and the voltage divider output, as shown in Figure 7.

I_{er} = FB pin input current, 1.3 μA typical.

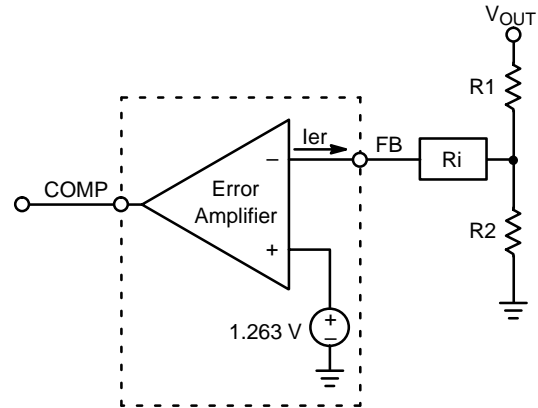


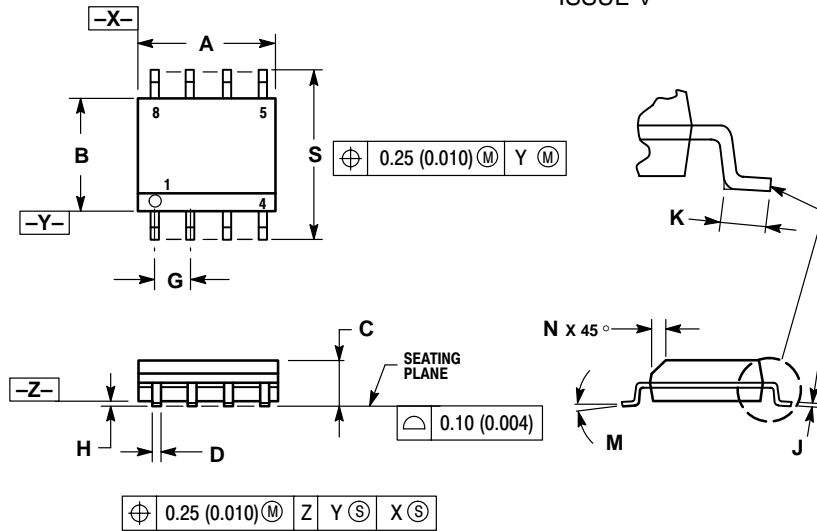
Figure 7. The Feedback Voltage Divider Design Has to Consider the Error Amplifier Input Current

Thermal Management

The CS51227 will enter thermal shutdown when the junction (die surface) temperature exceeds 150°C, typical. 10°C typical thermal hysteresis will prevent part cycling, or a “chattering” startup near the shutdown temperature. Junction temperature is a function of the ambient temperature, thermal resistance of the die and package, and the power dissipated by the package and leads.

PACKAGE DIMENSIONS

SO-8
D SUFFIX
CASE 751-07
ISSUE V




NOTES:

1. DIMENSIONING AND TOLERANCING PER ANSI Y14.5M, 1982.
2. CONTROLLING DIMENSION: MILLIMETER.
3. DIMENSION A AND B DO NOT INCLUDE MOLD PROTRUSION.
4. MAXIMUM MOLD PROTRUSION 0.15 (0.006) PER SIDE.
5. DIMENSION D DOES NOT INCLUDE DAMBAR PROTRUSION. ALLOWABLE DAMBAR PROTRUSION SHALL BE 0.127 (0.005) TOTAL IN EXCESS OF THE D DIMENSION AT MAXIMUM MATERIAL CONDITION.

DIM	MILLIMETERS		INCHES	
	MIN	MAX	MIN	MAX
A	4.80	5.00	0.189	0.197
B	3.80	4.00	0.150	0.157
C	1.35	1.75	0.053	0.069
D	0.33	0.51	0.013	0.020
G	1.27 BSC		0.050 BSC	
H	0.10	0.25	0.004	0.010
J	0.19	0.25	0.007	0.010
K	0.40	1.27	0.016	0.050
M	0°	8°	0°	8°
N	0.25	0.50	0.010	0.020
S	5.80	6.20	0.228	0.244

PACKAGE THERMAL DATA

Parameter		SO-8	Unit
R _{θJC}	Typical	45	°C/W
R _{θJA}	Typical	165	°C/W

ON Semiconductor and  are trademarks of Semiconductor Components Industries, LLC (SCILLC). SCILLC reserves the right to make changes without further notice to any products herein. SCILLC makes no warranty, representation or guarantee regarding the suitability of its products for any particular purpose, nor does SCILLC assume any liability arising out of the application or use of any product or circuit, and specifically disclaims any and all liability, including without limitation special, consequential or incidental damages. "Typical" parameters which may be provided in SCILLC data sheets and/or specifications can and do vary in different applications and actual performance may vary over time. All operating parameters, including "Typicals" must be validated for each customer application by customer's technical experts. SCILLC does not convey any license under its patent rights nor the rights of others. SCILLC products are not designed, intended, or authorized for use as components in systems intended for surgical implant into the body, or other applications intended to support or sustain life, or for any other application in which the failure of the SCILLC product could create a situation where personal injury or death may occur. Should Buyer purchase or use SCILLC products for any such unintended or unauthorized application, Buyer shall indemnify and hold SCILLC and its officers, employees, subsidiaries, affiliates, and distributors harmless against all claims, costs, damages, and expenses, and reasonable attorney fees arising out of, directly or indirectly, any claim of personal injury or death associated with such unintended or unauthorized use, even if such claim alleges that SCILLC was negligent regarding the design or manufacture of the part. SCILLC is an Equal Opportunity/Affirmative Action Employer.

PUBLICATION ORDERING INFORMATION

Literature Fulfillment:

Literature Distribution Center for ON Semiconductor
P.O. Box 5163, Denver, Colorado 80217 USA
Phone: 303-675-2175 or 800-344-3860 Toll Free USA/Canada
Fax: 303-675-2176 or 800-344-3867 Toll Free USA/Canada
Email: ONlit@hibbertco.com

N. American Technical Support: 800-282-9855 Toll Free USA/Canada

JAPAN: ON Semiconductor, Japan Customer Focus Center
4-32-1 Nishi-Gotanda, Shinagawa-ku, Tokyo, Japan 141-0031
Phone: 81-3-5740-2700
Email: r14525@onsemi.com

ON Semiconductor Website: <http://onsemi.com>

For additional information, please contact your local Sales Representative.