

MN6576H

Low Power 9-Bit CMOS A/D Converter for Image Processing

■ Overview

The MN6576H is a high-speed 9-bit CMOS analog-to-digital converter for image processing applications.

It uses a half flash structure based on chopper comparators and achieves both high speed and low power consumption with multiplexing.

It provides separate power supply pins for the circuits driving the low-voltage digital output pins.

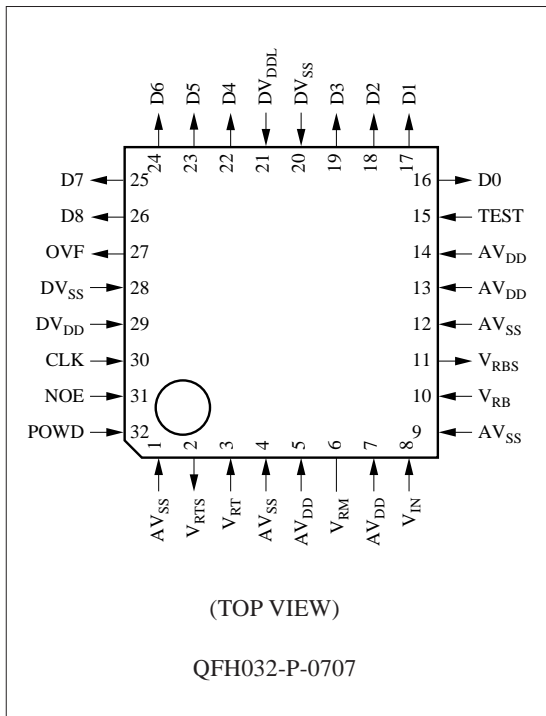
■ Features

- Maximum conversion rate: 16 MSPS (min.)
- Linearity error: ± 2.5 LSB (typ.)
- Differential linearity error: ± 0.6 LSB (typ.)
- Power supply voltage: 5.0 V or 3.3 V
- Power consumption: 120 mW (typ.) ($f_{CLK}=16$ MHz)

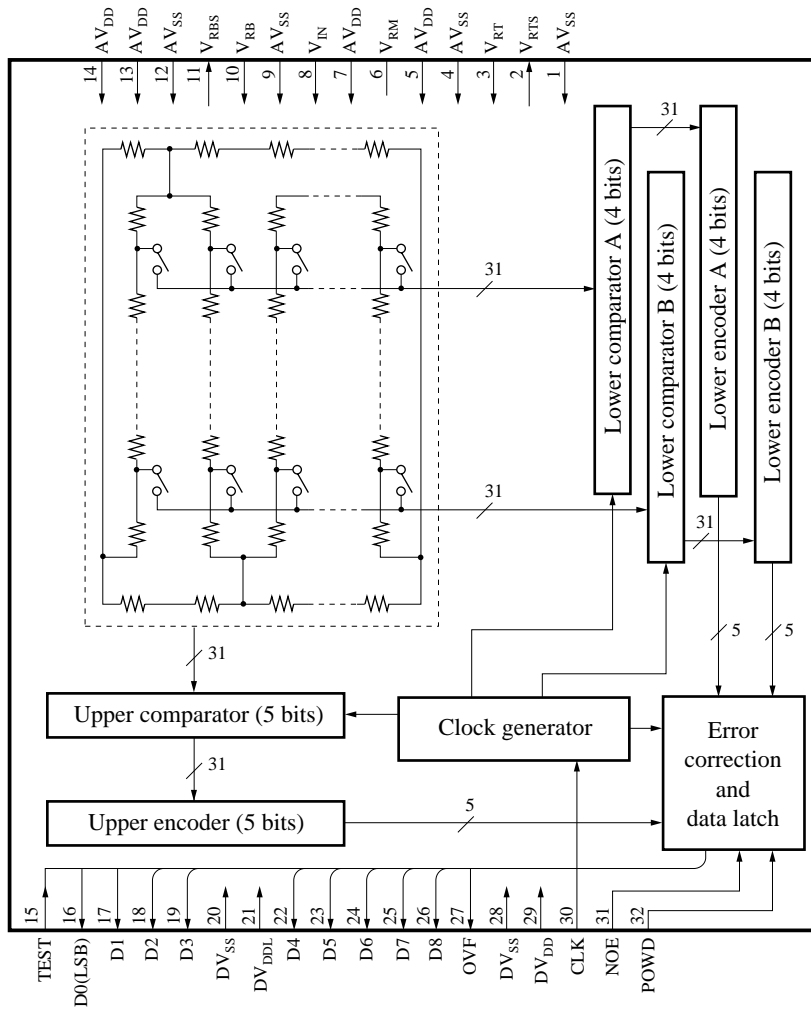
■ Applications

- Digital television receivers
- Digital video equipment
- Digital image processing equipment

■ Pin Assignment



■ Block Diagram



■ Pin Descriptions

Pin No.	Symbol	Function Description
1	AV _{SS}	Ground for analog circuits
2	V _{RTS}	Reference voltage power supply (TOP)
3	V _{RT}	Reference voltage input (TOP)
4	AV _{SS}	Ground for analog circuits
5	AV _{DD}	Power supply for analog circuits
6	V _{RM}	Intermediate reference voltage
7	AV _{DD}	Power supply for analog circuits
8	V _{IN}	Analog signal input
9	AV _{SS}	Ground for analog circuits
10	V _{RB}	Reference voltage power supply (BOTTOM)
11	V _{RBS}	Reference voltage input (BOTTOM)
12	AV _{SS}	Ground for analog circuits
13	AV _{DD}	Power supply for analog circuits
14	AV _{DD}	Power supply for analog circuits
15	TEST	Test mode selection
16	D0	Digital code output (LSB)
17	D1	Digital code output
18	D2	Digital code output
19	D3	Digital code output
20	DV _{SS}	Ground for digital circuits
21	DV _{DDL}	Power supply for low-voltage digital outputs
22	D4	Digital code output
23	D5	Digital code output
24	D6	Digital code output
25	D7	Digital code output
26	D8	Digital code output (MSB)
27	OVF	Overflow output
28	DV _{SS}	Ground for digital circuits
29	DV _{DD}	Power supply for digital circuits
30	CLK	Sampling clock
31	NOE	Output enable
32	POWD	Power down mode selection

■ Absolute Maximum Ratings $T_a=25^\circ\text{C}$

Parameter	Symbol	Rating	Unit
Power supply voltage	V_{DD}	-0.3 to +7.0	V
Power supply voltage for digital output circuits	DV_{DDL}	-0.3 to $V_{DD}+0.3$	V
Input voltage	V_I	-0.3 to $V_{DD}+0.3$	V
Output voltage	V_O	-0.3 to $V_{DD}+0.3$	V
Operating ambient temperature	T_{opr}	-20 to +70	$^\circ\text{C}$
Storage temperature	T_{stg}	-55 to +125	$^\circ\text{C}$

■ Recommended Operating Conditions $V_{DD}=AV_{DD}=DV_{DD}=4.5\text{V}$, $DV_{DDL}=3.0\text{V}$, $V_{SS}=AV_{SS}=DV_{SS}=0\text{V}$, $T_a=25^\circ\text{C}$

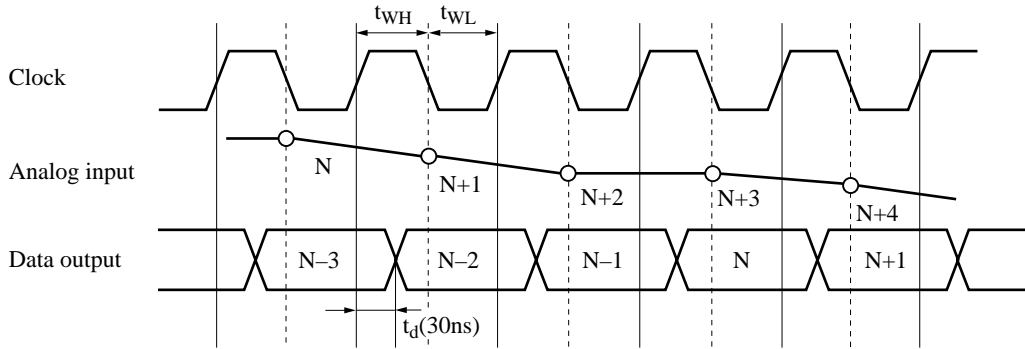
Parameter	Symbol	min	typ	max	Unit
Power supply voltage	V_{DD}	4.50	5.00	5.25	V
Power supply voltage for digital output circuits	DV_{DDL}	3.0		3.6	V
Digital input voltage	"H" level	V_{IH}	2.4	V_{DD}	V
	"L" level	V_{IL}	V_{SS}	0.8	V
Reference voltage	"H" level	V_{RT}	3.0	V_{DD}	V
	"L" level	V_{RB}	V_{SS}	2.0	V
Clock	"H" level pulse width	t_{WH}	25		ns
	"L" level pulse width	t_{WL}	25		ns
Analog input voltage	V_{AIN}	V_{SS}		V_{DD}	V

■ Electrical Characteristics $V_{DD}=AV_{DD}=DV_{DD}=4.5\text{V}$, $DV_{DDL}=3.0\text{V}$, $AV_{SS}=DV_{SS}=0\text{V}$, $T_a=25^\circ\text{C}$

Parameter	Symbol	Conditions	min	typ	max	Unit
Power consumption	P_C	$V_{DD}=5.0\text{V}$, $DV_{DDL}=3.3\text{V}$, $f_{CLK}=16\text{MSPS}$ (not including reference current)		120	150	mW
Resolution	RES			9		bit
Linearity error	E_L	$f_{CLK}=16\text{MSPS}$		± 2.5	± 3.5	LSB
Differential linearity error	E_D	$V_{RT}=3.3\text{V}$ $V_{RB}=1.3\text{V}$		± 0.6	± 1.0	LSB
Maximum conversion rate	$F_{C(max.)}$		16			MSPS
Clock frequency	f_{CLK}		1		16	MHz
Analog input dynamic range	D_R		2		$V_{RT}-V_{RB}$	V
Output current	"H" level	I_{OH}			-2	mA
	"L" level	I_{OL}	$V_{OH}=DV_{DDL}-0.8\text{V}$, $V_{DD}=5.0\text{V}$, $DV_{DDL}=3.3\text{V}$			
		I_{OL}	$V_{OL}=0.4\text{V}$, $V_{DD}=5.0\text{V}$ $DV_{DDL}=3.3\text{V}$	2		mA
Output delay time	t_d	$V_{DD}=5.0\text{V}$, $DV_{DDL}=3.3\text{V}$, $C_L=10\text{pF}$	10	30	45	ns
Analog input capacitance	C_I	$V_{DD}=5.0\text{V}$		26		pF

■ Timing Chart

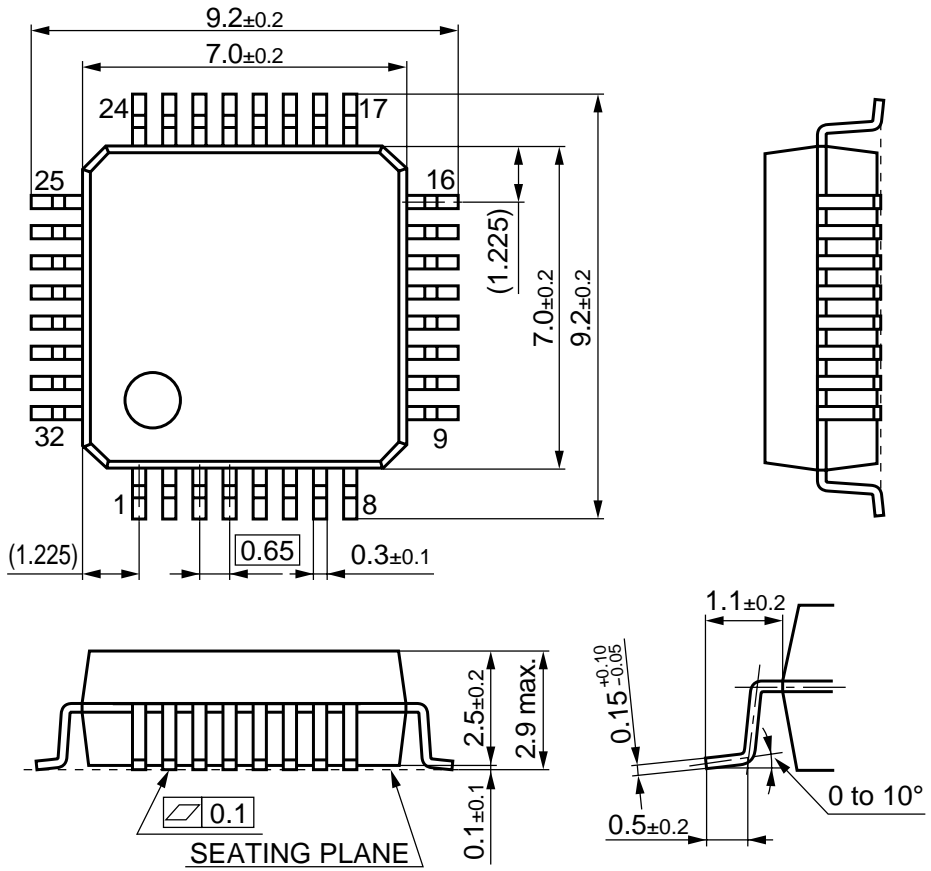
The chip samples the analog input at the falling edge of the clock signal and provides the corresponding digital output 2.5 clock cycles later at the rising edge of the clock signal.



Note: The circles indicate analog signal sampling points.

■ Package Dimensions (Unit:mm)

QFH032-P-0707



Request for your special attention and precautions in using the technical information and semiconductors described in this material

- (1) An export permit needs to be obtained from the competent authorities of the Japanese Government if any of the products or technologies described in this material and controlled under the "Foreign Exchange and Foreign Trade Law" is to be exported or taken out of Japan.
- (2) The technical information described in this material is limited to showing representative characteristics and applied circuit examples of the products. It does not constitute the warranting of industrial property, the granting of relative rights, or the granting of any license.
- (3) The products described in this material are intended to be used for standard applications or general electronic equipment (such as office equipment, communications equipment, measuring instruments and household appliances).
Consult our sales staff in advance for information on the following applications:
 - Special applications (such as for airplanes, aerospace, automobiles, traffic control equipment, combustion equipment, life support systems and safety devices) in which exceptional quality and reliability are required, or if the failure or malfunction of the products may directly jeopardize life or harm the human body.
 - Any applications other than the standard applications intended.
- (4) The products and product specifications described in this material are subject to change without notice for reasons of modification and/or improvement. At the final stage of your design, purchasing, or use of the products, therefore, ask for the most up-to-date Product Standards in advance to make sure that the latest specifications satisfy your requirements.
- (5) When designing your equipment, comply with the guaranteed values, in particular those of maximum rating, the range of operating power supply voltage and heat radiation characteristics. Otherwise, we will not be liable for any defect which may arise later in your equipment.
Even when the products are used within the guaranteed values, redundant design is recommended, so that such equipment may not violate relevant laws or regulations because of the function of our products.
- (6) When using products for which dry packing is required, observe the conditions (including shelf life and after-unpacking standby time) agreed upon when specification sheets are individually exchanged.
- (7) No part of this material may be reprinted or reproduced by any means without written permission from our company.

Please read the following notes before using the datasheets

- A. These materials are intended as a reference to assist customers with the selection of Panasonic semiconductor products best suited to their applications.
Due to modification or other reasons, any information contained in this material, such as available product types, technical data, and so on, is subject to change without notice.
Customers are advised to contact our semiconductor sales office and obtain the latest information before starting precise technical research and/or purchasing activities.
- B. Panasonic is endeavoring to continually improve the quality and reliability of these materials but there is always the possibility that further rectifications will be required in the future. Therefore, Panasonic will not assume any liability for any damages arising from any errors etc. that may appear in this material.
- C. These materials are solely intended for a customer's individual use.
Therefore, without the prior written approval of Panasonic, any other use such as reproducing, selling, or distributing this material to a third party, via the Internet or in any other way, is prohibited.