

To all our customers

---

## **Regarding the change of names mentioned in the document, such as Hitachi Electric and Hitachi XX, to Renesas Technology Corp.**

---

The semiconductor operations of Mitsubishi Electric and Hitachi were transferred to Renesas Technology Corporation on April 1st 2003. These operations include microcomputer, logic, analog and discrete devices, and memory chips other than DRAMs (flash memory, SRAMs etc.) Accordingly, although Hitachi, Hitachi, Ltd., Hitachi Semiconductors, and other Hitachi brand names are mentioned in the document, these names have in fact all been changed to Renesas Technology Corp. Thank you for your understanding. Except for our corporate trademark, logo and corporate statement, no changes whatsoever have been made to the contents of the document, and these changes do not constitute any alteration to the contents of the document itself.

Renesas Technology Home Page: <http://www.renesas.com>

Renesas Technology Corp.  
Customer Support Dept.  
April 1, 2003

## Cautions

Keep safety first in your circuit designs!

1. Renesas Technology Corporation puts the maximum effort into making semiconductor products better and more reliable, but there is always the possibility that trouble may occur with them. Trouble with semiconductors may lead to personal injury, fire or property damage.

Remember to give due consideration to safety when making your circuit designs, with appropriate measures such as (i) placement of substitutive, auxiliary circuits, (ii) use of nonflammable material or (iii) prevention against any malfunction or mishap.

Notes regarding these materials

1. These materials are intended as a reference to assist our customers in the selection of the Renesas Technology Corporation product best suited to the customer's application; they do not convey any license under any intellectual property rights, or any other rights, belonging to Renesas Technology Corporation or a third party.
2. Renesas Technology Corporation assumes no responsibility for any damage, or infringement of any third-party's rights, originating in the use of any product data, diagrams, charts, programs, algorithms, or circuit application examples contained in these materials.
3. All information contained in these materials, including product data, diagrams, charts, programs and algorithms represents information on products at the time of publication of these materials, and are subject to change by Renesas Technology Corporation without notice due to product improvements or other reasons. It is therefore recommended that customers contact Renesas Technology Corporation or an authorized Renesas Technology Corporation product distributor for the latest product information before purchasing a product listed herein.  
The information described here may contain technical inaccuracies or typographical errors. Renesas Technology Corporation assumes no responsibility for any damage, liability, or other loss rising from these inaccuracies or errors.  
Please also pay attention to information published by Renesas Technology Corporation by various means, including the Renesas Technology Corporation Semiconductor home page (<http://www.renesas.com>).
4. When using any or all of the information contained in these materials, including product data, diagrams, charts, programs, and algorithms, please be sure to evaluate all information as a total system before making a final decision on the applicability of the information and products. Renesas Technology Corporation assumes no responsibility for any damage, liability or other loss resulting from the information contained herein.
5. Renesas Technology Corporation semiconductors are not designed or manufactured for use in a device or system that is used under circumstances in which human life is potentially at stake. Please contact Renesas Technology Corporation or an authorized Renesas Technology Corporation product distributor when considering the use of a product contained herein for any specific purposes, such as apparatus or systems for transportation, vehicular, medical, aerospace, nuclear, or undersea repeater use.
6. The prior written approval of Renesas Technology Corporation is necessary to reprint or reproduce in whole or in part these materials.
7. If these products or technologies are subject to the Japanese export control restrictions, they must be exported under a license from the Japanese government and cannot be imported into a country other than the approved destination.  
Any diversion or reexport contrary to the export control laws and regulations of Japan and/or the country of destination is prohibited.
8. Please contact Renesas Technology Corporation for further details on these materials or the products contained therein.

---

# HM62V16514I Series

Wide Temperature Range Version  
8 M SRAM (512-kword × 16-bit)



ADE-203-1280B (Z)  
Rev. 1.0  
Mar. 15, 2002

---

## Description

The Hitachi HM62V16514I Series is 8-Mbit static RAM organized 524,288-word × 16-bit. HM62V16514I Series has realized higher density, higher performance and low power consumption by employing Hi-CMOS process technology. It offers low power standby power dissipation; therefore, it is suitable for battery backup systems. It is packaged in standard 44-pin plastic TSOPII.

## Features

- Single 3.0 V supply: 2.7 V to 3.6 V
- Fast access time: 55 ns (Max)
- Power dissipation:
  - Active: 6.0 mW/MHz (Typ)
  - Standby: 1.5  $\mu$ W (Typ)
- Completely static memory.
  - No clock or timing strobe required
- Equal access and cycle times
- Common data input and output.
  - Three state output
- Battery backup operation.
- Temperature range:  $-40$  to  $+85^{\circ}\text{C}$

---

## HM62V16514I Series

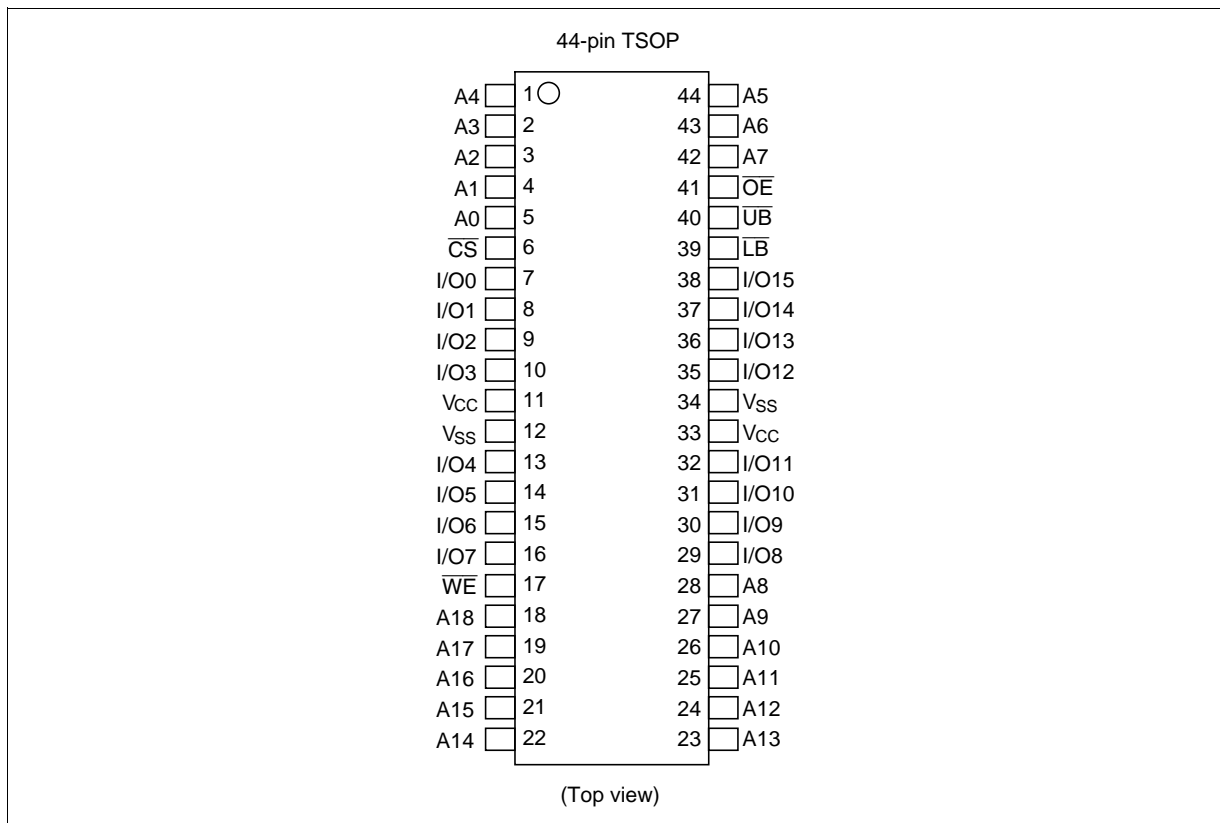
---

### Ordering Information

Type No.	Access time	Package
HM62V16514LTTI-5	55 ns	400-mil 44-pin plastic TSOPII (normal-bend type) (TTP-44DE)
HM62V16514LTTI-5SL	55 ns	

---

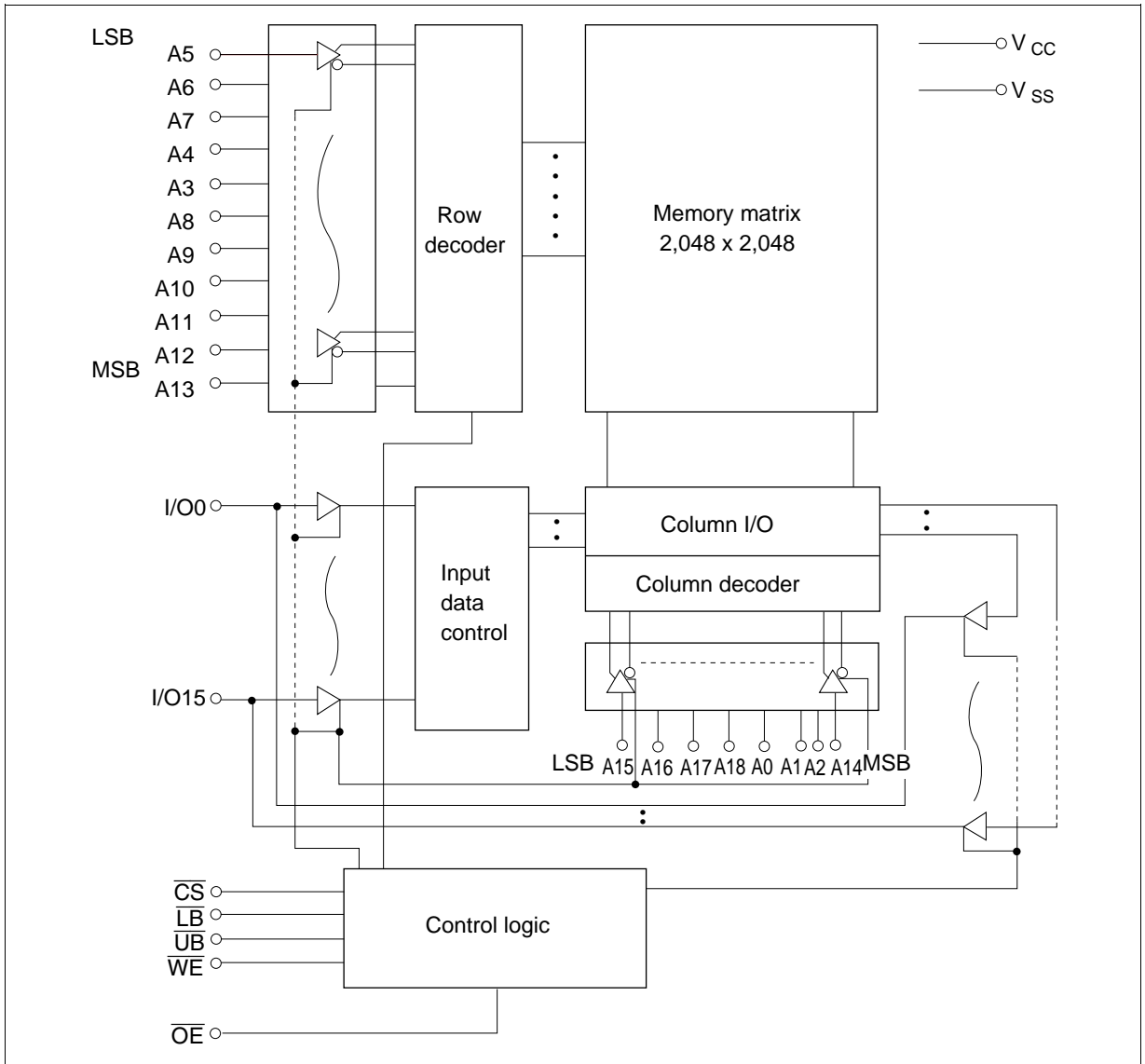
## Pin Arrangement



## Pin Description

Pin name	Function
A0 to A18	Address input
I/O0 to I/O15	Data input/output
$\overline{CS}$	Chip select
$\overline{WE}$	Write enable
$\overline{OE}$	Output enable
$\overline{LB}$	Lower byte select
$\overline{UB}$	Upper byte select
$V_{CC}$	Power supply
$V_{SS}$	Ground

## Block Diagram



## Operation Table

$\overline{CS}$	$\overline{WE}$	$\overline{OE}$	$\overline{UB}$	$\overline{LB}$	I/O0 to I/O7	I/O8 to I/O15	Operation
H	×	×	×	×	High-Z	High-Z	Standby
×	×	×	H	H	High-Z	High-Z	Standby
L	H	L	L	L	Dout	Dout	Read
L	H	L	H	L	Dout	High-Z	Lower byte read
L	H	L	L	H	High-Z	Dout	Upper byte read
L	L	×	L	L	Din	Din	Write
L	L	×	H	L	Din	High-Z	Lower byte write
L	L	×	L	H	High-Z	Din	Upper byte write
L	H	H	×	×	High-Z	High-Z	Output disable

Note: H:  $V_{IH}$ , L:  $V_{IL}$ , ×:  $V_{IH}$  or  $V_{IL}$

## Absolute Maximum Ratings

Parameter	Symbol	Value	Unit
Power supply voltage relative to $V_{SS}$	$V_{CC}$	-0.5 to +4.6	V
Terminal voltage on any pin relative to $V_{SS}$	$V_T$	-0.5 <sup>*1</sup> to $V_{CC} + 0.3$ <sup>*2</sup>	V
Power dissipation	$P_T$	1.0	W
Storage temperature range	Tstg	-55 to +125	°C
Storage temperature range under bias	Tbias	-40 to +85	°C

Notes: 1.  $V_T$  min: -3.0 V for pulse half-width ≤ 30 ns.  
2. Maximum voltage is +4.6 V.

## DC Operating Conditions

Parameter	Symbol	Min	Typ	Max	Unit	Note
Supply voltage	$V_{CC}$	2.7	3.0	3.6	V	
	$V_{SS}$	0	0	0	V	
Input high voltage	$V_{IH}$	2.2	—	$V_{CC} + 0.3$	V	
Input low voltage	$V_{IL}$	-0.3	—	0.6	V	1
Ambient temperature range	$T_a$	-40	—	85	°C	

Note: 1.  $V_{IL}$  min: -3.0 V for pulse half-width ≤ 30 ns.

## DC Characteristics

Parameter	Symbol	Min	Typ* <sup>1</sup>	Max	Unit	Test conditions
Input leakage current	$ I_{LI} $	—	—	1	$\mu\text{A}$	$V_{in} = V_{SS}$ to $V_{CC}$
Output leakage current	$ I_{LO} $	—	—	1	$\mu\text{A}$	$\overline{CS} = V_{IH}$ or $\overline{OE} = V_{IH}$ or $\overline{WE} = V_{IL}$ or $\overline{LB} = \overline{UB} = V_{IH}$ , $V_{I/O} = V_{SS}$ to $V_{CC}$
Operating current	$I_{CC}$	—	—	20	mA	$\overline{CS} = V_{IL}$ , Others = $V_{IH}/V_{IL}$ , $I_{I/O} = 0$ mA
Average operating current	$I_{CC1}$	—	16	30	mA	Min. cycle, duty = 100%, $I_{I/O} = 0$ mA, $\overline{CS} = V_{IL}$ , Others = $V_{IH}/V_{IL}$
	$I_{CC2}$	—	2	5	mA	Cycle time = 1 $\mu\text{s}$ , duty = 100%, $I_{I/O} = 0$ mA, $\overline{CS} \leq 0.2$ V, $V_{IH} \geq V_{CC} - 0.2$ V, $V_{IL} \leq 0.2$ V
Standby current	$I_{SB}$	—	0.1	0.3	mA	$\overline{CS} = V_{IH}$
Standby current	$I_{SB1}^{*2}$	—	0.5	25	$\mu\text{A}$	$0 \text{ V} \leq V_{in}$ (1) $\overline{CS} \geq V_{CC} - 0.2$ V or (2) $\overline{LB} = \overline{UB} \geq V_{CC} - 0.2$ V, $\overline{CS} \leq 0.2$ V
	$I_{SB1}^{*3}$	—	0.5	10	$\mu\text{A}$	
Output high voltage	$V_{OH}$	2.2	—	—	V	$I_{OH} = -1$ mA
Output low voltage	$V_{OL}$	—	—	0.4	V	$I_{OL} = 2$ mA

Notes: 1. Typical values are at  $V_{CC} = 3.0$  V,  $T_a = +25^\circ\text{C}$  and not guaranteed.

2. This characteristic is guaranteed only for L version.

3. This characteristic is guaranteed only for L-SL version.

## Capacitance ( $T_a = +25^\circ\text{C}$ , $f = 1.0$ MHz)

Parameter	Symbol	Min	Typ	Max	Unit	Test conditions	Note
Input capacitance	$C_{in}$	—	—	8	pF	$V_{in} = 0$ V	1
Input/output capacitance	$C_{I/O}$	—	—	10	pF	$V_{I/O} = 0$ V	1

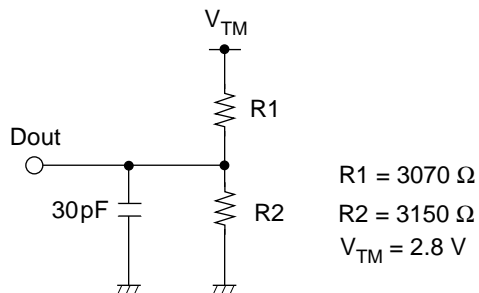
Note: 1. This parameter is sampled and not 100% tested.



**AC Characteristics** ( $T_a = -40$  to  $+85^\circ\text{C}$ ,  $V_{CC} = 2.7$  V to 3.6 V, unless otherwise noted.)

**Test Conditions**

- Input pulse levels:  $V_{IL} = 0.4$  V,  $V_{IH} = 2.2$  V
- Input rise and fall time: 5 ns
- Input and output timing reference levels: 1.5 V
- Output load: See figures (Including scope and jig)



## Read Cycle

Parameter	Symbol	HM62V16514I		Unit	Notes
		-5			
		Min	Max		
Read cycle time	$t_{RC}$	55	—	ns	
Address access time	$t_{AA}$	—	55	ns	
Chip select access time	$t_{ACS}$	—	55	ns	
Output enable to output valid	$t_{OE}$	—	35	ns	
Output hold from address change	$t_{OH}$	10	—	ns	
$\overline{LB}$ , $\overline{UB}$ access time	$t_{BA}$	—	55	ns	
Chip select to output in low-Z	$t_{CLZ}$	10	—	ns	2, 3
$\overline{LB}$ , $\overline{UB}$ enable to low-z	$t_{BLZ}$	5	—	ns	2, 3
Output enable to output in low-Z	$t_{OLZ}$	5	—	ns	2, 3
Chip deselect to output in high-Z	$t_{CHZ}$	0	20	ns	1, 2, 3
$\overline{LB}$ , $\overline{UB}$ disable to high-Z	$t_{BHZ}$	0	20	ns	1, 2, 3
Output disable to output in high-Z	$t_{OHZ}$	0	20	ns	1, 2, 3

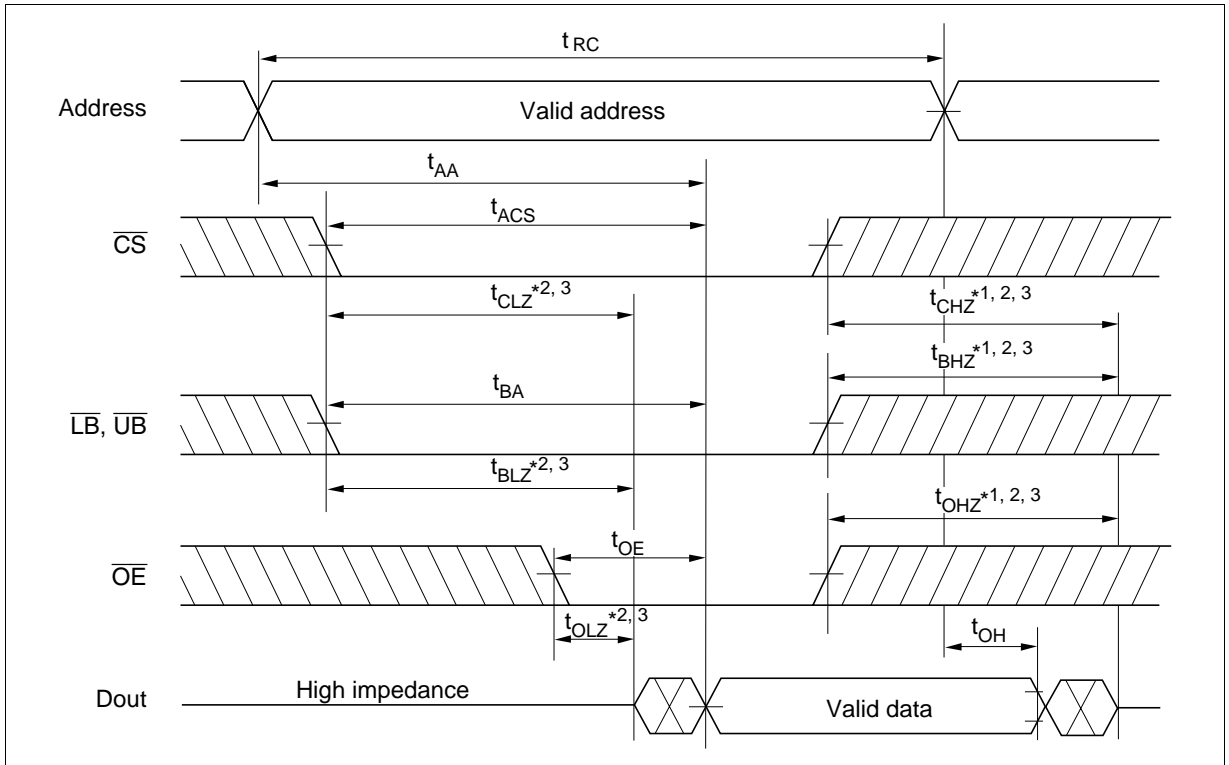
Write Cycle

Parameter	Symbol	HM62V16514I		Unit	Notes
		-5			
		Min	Max		
Write cycle time	$t_{WC}$	55	—	ns	
Address valid to end of write	$t_{AW}$	50	—	ns	
Chip selection to end of write	$t_{CW}$	50	—	ns	5
Write pulse width	$t_{WP}$	40	—	ns	4
$\overline{LB}$ , $\overline{UB}$ valid to end of write	$t_{BW}$	50	—	ns	
Address setup time	$t_{AS}$	0	—	ns	6
Write recovery time	$t_{WR}$	0	—	ns	7
Data to write time overlap	$t_{DW}$	25	—	ns	
Data hold from write time	$t_{DH}$	0	—	ns	
Output active from end of write	$t_{OW}$	5	—	ns	2
Output disable to output in High-Z	$t_{OHZ}$	0	20	ns	1, 2
Write to output in high-Z	$t_{WHZ}$	0	20	ns	1, 2

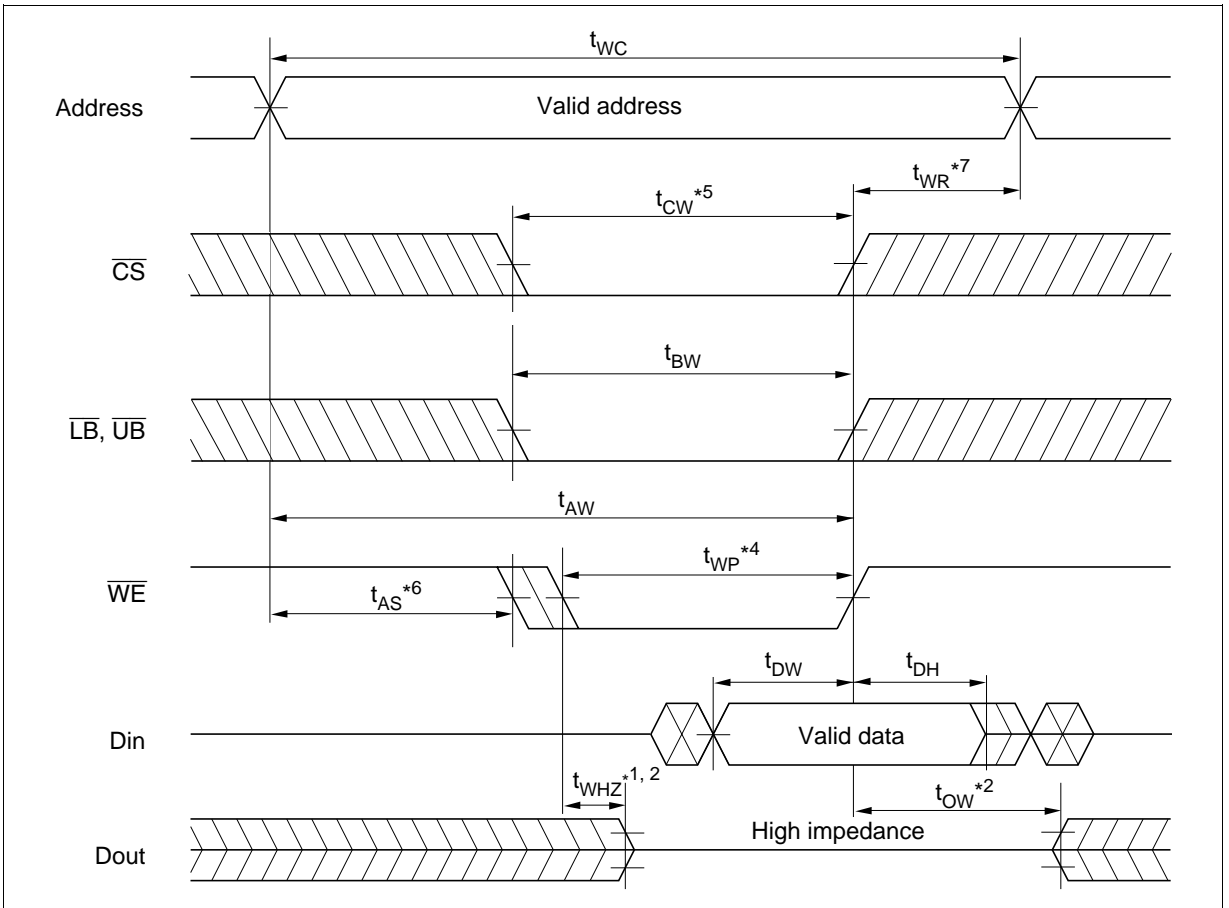
- Notes:
- $t_{CHZ}$ ,  $t_{OHZ}$ ,  $t_{WHZ}$  and  $t_{BHZ}$  are defined as the time at which the outputs achieve the open circuit conditions and are not referred to output voltage levels.
  - This parameter is sampled and not 100% tested.
  - At any given temperature and voltage condition,  $t_{HZ}$  max is less than  $t_{LZ}$  min both for a given device and from device to device.
  - A write occurs during the overlap of a low  $\overline{CS}$ , a low  $\overline{WE}$  and a low  $\overline{LB}$  or a low  $\overline{UB}$ . A write begins at the latest transition among  $\overline{CS}$  going low,  $\overline{WE}$  going low and  $\overline{LB}$  going low or  $\overline{UB}$  going low. A write ends at the earliest transition among  $\overline{CS}$  going high,  $\overline{WE}$  going high and  $\overline{LB}$  going high or  $\overline{UB}$  going high.  $t_{WP}$  is measured from the beginning of write to the end of write.
  - $t_{CW}$  is measured from the later of  $\overline{CS}$  going low to the end of write.
  - $t_{AS}$  is measured from the address valid to the beginning of write.
  - $t_{WR}$  is measured from the earliest of  $\overline{CS}$  or  $\overline{WE}$  going high to the end of write cycle.

## Timing Waveform

### Read Cycle

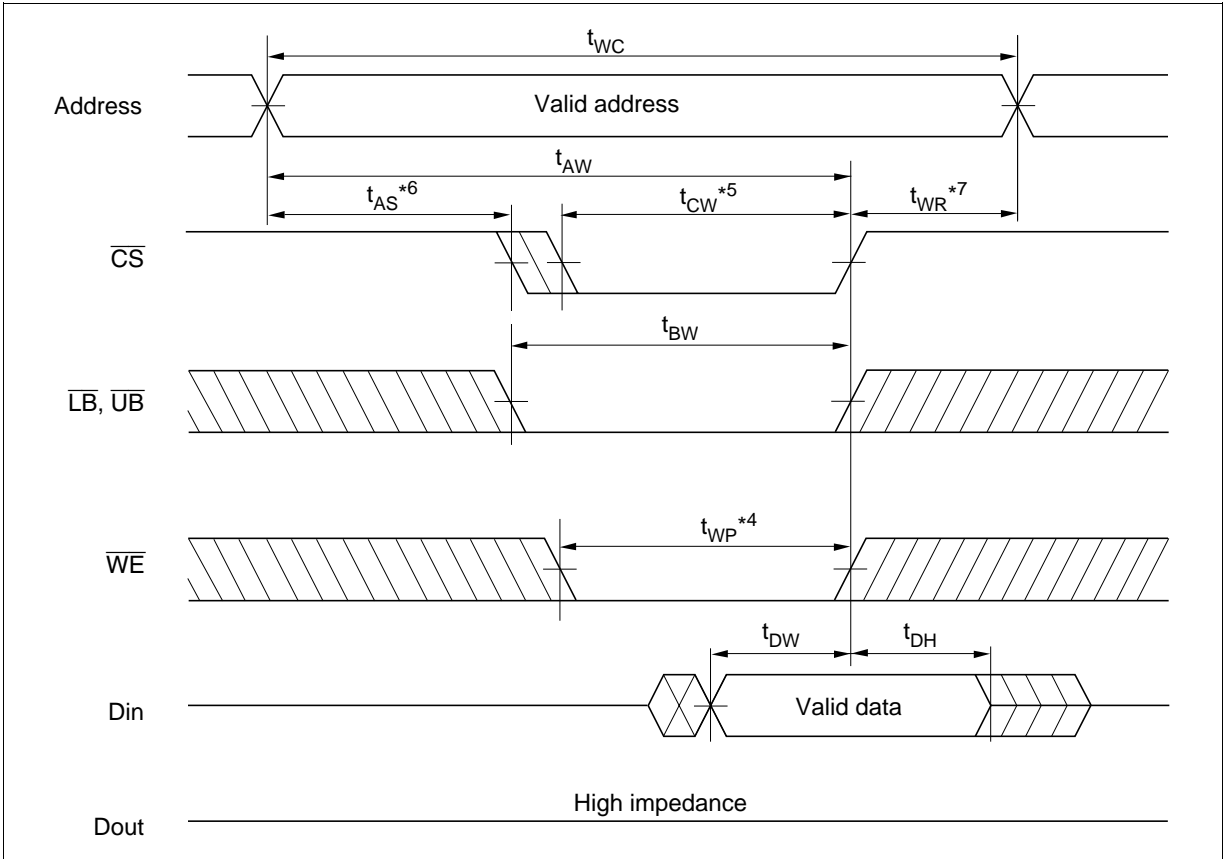


Write Cycle (1) ( $\overline{\text{WE}}$  Clock)

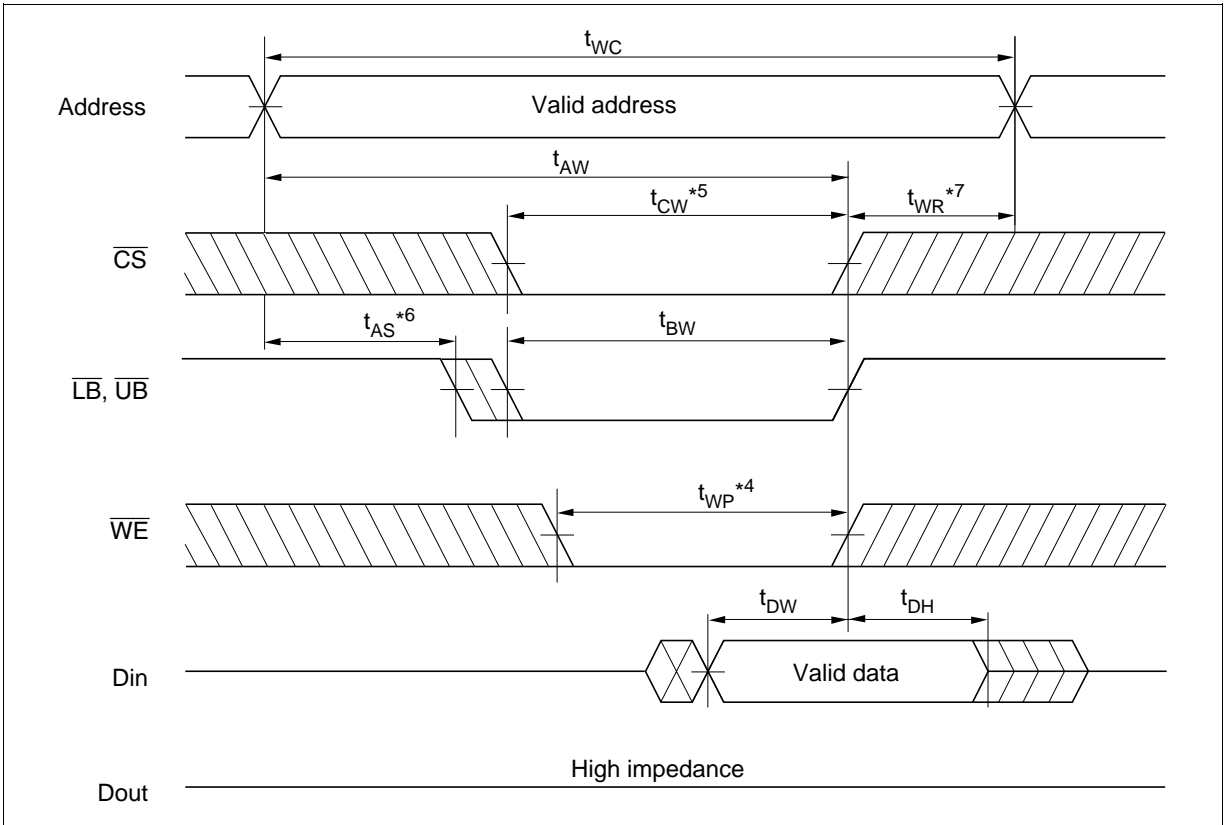


# HM62V16514I Series

Write Cycle (2) ( $\overline{CS}$  Clock,  $\overline{OE} = V_{IH}$ )



Write Cycle (3) ( $\overline{\text{LB}}, \overline{\text{UB}}$  Clock,  $\overline{\text{OE}} = \text{V}_{\text{IH}}$ )



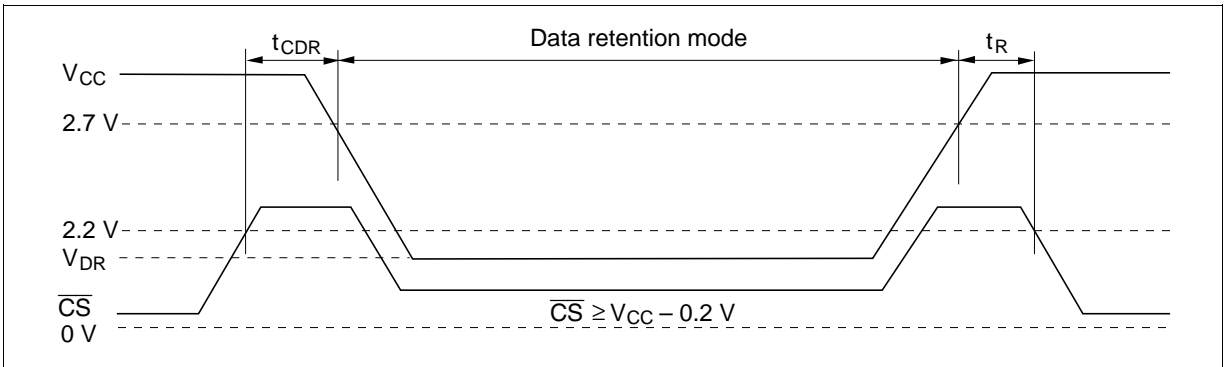
## Low $V_{CC}$ Data Retention Characteristics ( $T_a = -40$ to $+85^\circ\text{C}$ )

Parameter	Symbol	Min	Typ* <sup>4</sup>	Max	Unit	Test conditions* <sup>3</sup>
$V_{CC}$ for data retention	$V_{DR}$	2.0	—	3.6	V	$V_{in} \geq 0V$ (1) $\overline{CS} \geq V_{CC} - 0.2V$ or (2) $\overline{LB} = \overline{UB} \geq V_{CC} - 0.2V$ $\overline{CS} \leq 0.2V$
Data retention current	$I_{CCDR}^{*1}$	—	0.5	25	$\mu\text{A}$	$V_{CC} = 3.0V$ , $V_{in} \geq 0V$ (1) $\overline{CS} \geq V_{CC} - 0.2V$ or (2) $\overline{LB} = \overline{UB} \geq V_{CC} - 0.2V$ $\overline{CS} \leq 0.2V$
	$I_{CCDR}^{*2}$	—	0.5	10	$\mu\text{A}$	
Chip deselect to data retention time	$t_{CDR}$	0	—	—	ns	See retention waveform
Operation recovery time	$t_R$	$t_{RC}^{*5}$	—	—	ns	

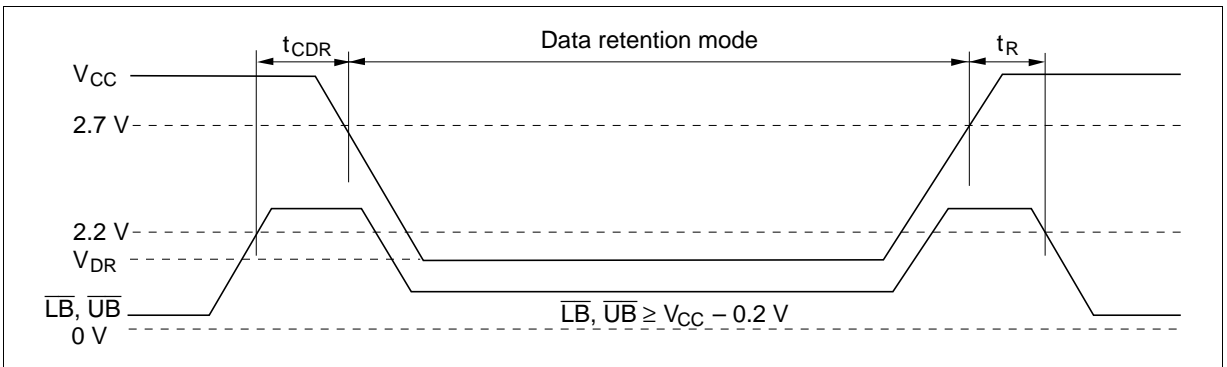
- Notes:
1. This characteristic is guaranteed only for L version.
  2. This characteristic is guaranteed only for L-SL version.
  3.  $\overline{CS}$  controls address buffer,  $\overline{WE}$  buffer,  $\overline{OE}$  buffer,  $\overline{LB}$ ,  $\overline{UB}$  buffer and Din buffer. If  $\overline{CS}$  controls data retention mode,  $V_{in}$  levels (address,  $\overline{WE}$ ,  $\overline{OE}$ ,  $\overline{LB}$ ,  $\overline{UB}$ , I/O) can be in the high impedance state. If  $\overline{LB}$ ,  $\overline{UB}$  controls data retention mode,  $\overline{LB}$ ,  $\overline{UB}$  must be  $\overline{LB} = \overline{UB} \geq V_{CC} - 0.2V$ ,  $\overline{CS}$  must be  $\overline{CS} \leq 0.2V$ . The other input levels (address,  $\overline{WE}$ ,  $\overline{OE}$ , I/O) can be in the high impedance state.
  4. Typical values are at  $V_{CC} = 3.0V$ ,  $T_a = +25^\circ\text{C}$  and not guaranteed.
  5.  $t_{RC}$  = read cycle time.



Low  $V_{CC}$  Data Retention Timing Waveform (1) ( $\overline{CS}$  Controlled)



Low  $V_{CC}$  Data Retention Timing Waveform (2) ( $\overline{LB}$ ,  $\overline{UB}$  Controlled)



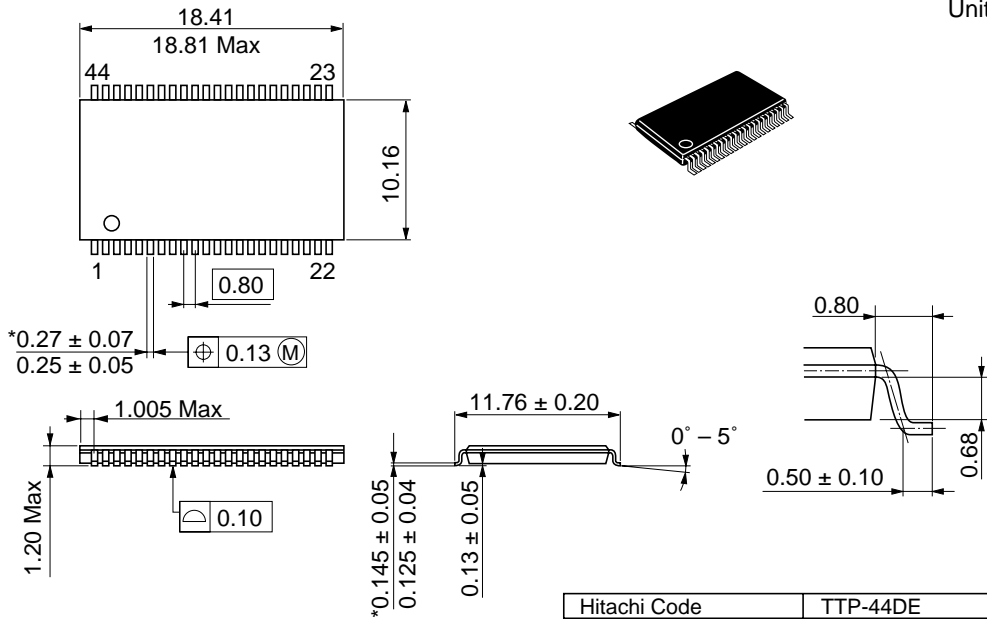
# HM62V16514I Series

## Package Dimensions

### HM62V16514LTTI Series (TTP-44DE)

As of July, 2001

Unit: mm



\*Dimension including the plating thickness  
Base material dimension

**Cautions**

1. Hitachi neither warrants nor grants licenses of any rights of Hitachi's or any third party's patent, copyright, trademark, or other intellectual property rights for information contained in this document. Hitachi bears no responsibility for problems that may arise with third party's rights, including intellectual property rights, in connection with use of the information contained in this document.
2. Products and product specifications may be subject to change without notice. Confirm that you have received the latest product standards or specifications before final design, purchase or use.
3. Hitachi makes every attempt to ensure that its products are of high quality and reliability. However, contact Hitachi's sales office before using the product in an application that demands especially high quality and reliability or where its failure or malfunction may directly threaten human life or cause risk of bodily injury, such as aerospace, aeronautics, nuclear power, combustion control, transportation, traffic, safety equipment or medical equipment for life support.
4. Design your application so that the product is used within the ranges guaranteed by Hitachi particularly for maximum rating, operating supply voltage range, heat radiation characteristics, installation conditions and other characteristics. Hitachi bears no responsibility for failure or damage when used beyond the guaranteed ranges. Even within the guaranteed ranges, consider normally foreseeable failure rates or failure modes in semiconductor devices and employ systemic measures such as fail-safes, so that the equipment incorporating Hitachi product does not cause bodily injury, fire or other consequential damage due to operation of the Hitachi product.
5. This product is not designed to be radiation resistant.
6. No one is permitted to reproduce or duplicate, in any form, the whole or part of this document without written approval from Hitachi.
7. Contact Hitachi's sales office for any questions regarding this document or Hitachi semiconductor products.

# HITACHI

**Hitachi, Ltd.**

Semiconductor & Integrated Circuits  
 Nippon Bldg., 2-6-2, Ohte-machi, Chiyoda-ku, Tokyo 100-0004, Japan  
 Tel: (03) 3270-2111 Fax: (03) 3270-5109

URL <http://www.hitachisemiconductor.com/>

**For further information write to:**

<p>Hitachi Semiconductor (America) Inc.                  179 East Tasman Drive                  San Jose, CA 95134                  Tel: &lt;1&gt; (408) 433-1990                  Fax: &lt;1&gt; (408) 433-0223</p>	<p>Hitachi Europe Ltd.                  Electronic Components Group                  Whitebrook Park                  Lower Cookham Road                  Maidenhead                  Berkshire SL6 8YA, United Kingdom                  Tel: &lt;44&gt; (1628) 585000                  Fax: &lt;44&gt; (1628) 585200</p> <p>Hitachi Europe GmbH                  Electronic Components Group                  Dornacher StraÙe 3                  D-85622 Feldkirchen                  Postfach 201, D-85619 Feldkirchen                  Germany                  Tel: &lt;49&gt; (89) 9 9180-0                  Fax: &lt;49&gt; (89) 9 29 30 00</p>	<p>Hitachi Asia Ltd.                  Hitachi Tower                  16 Collyer Quay #20-00                  Singapore 049318                  Tel : &lt;65&gt;-538-6533/538-8577                  Fax : &lt;65&gt;-538-6933/538-3877                  URL : <a href="http://semiconductor.hitachi.com.sg">http://semiconductor.hitachi.com.sg</a></p> <p>Hitachi Asia Ltd.                  (Taipei Branch Office)                  4/F, No. 167, Tun Hwa North Road                  Hung-Kuo Building                  Taipei (105), Taiwan                  Tel : &lt;886&gt;-(2)-2718-3666                  Fax : &lt;886&gt;-(2)-2718-8180                  Telex : 23222 HAS-TP                  URL : <a href="http://www.hitachi.com.tw">http://www.hitachi.com.tw</a></p>	<p>Hitachi Asia (Hong Kong) Ltd.                  Group III (Electronic Components)                  7/F., North Tower                  World Finance Centre,                  Harbour City, Canton Road                  Tsim Sha Tsui, Kowloon Hong Kong                  Tel : &lt;852&gt;-(2)-735-9218                  Fax : &lt;852&gt;-(2)-730-0281                  URL : <a href="http://semiconductor.hitachi.com.hk">http://semiconductor.hitachi.com.hk</a></p>
--	--	---	---

Copyright © Hitachi, Ltd., 2001. All rights reserved. Printed in Japan.

Colophon 5.0