

# Ceramic Low Pass Filter

50Ω DC to 2000 MHz

# LFCN-2000+ LFCN-2000



## Maximum Ratings

Operating Temperature	-55°C to 100°C
Storage Temperature	-55°C to 100°C
RF Power Input*	9W max. at 25°C
DC Current Input to Output	1A max. at 25°C

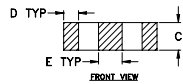
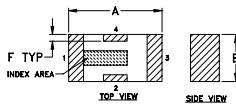
\* Passband rating, derate linearly to 4W at 100°C ambient.

## Pin Connections

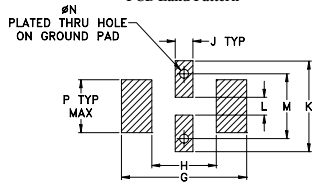
RF IN	1**
RF OUT	3**
GROUND	2,4

\*\* RF IN & RF OUT can be interchanged

## Outline Drawing



### PCB Land Pattern

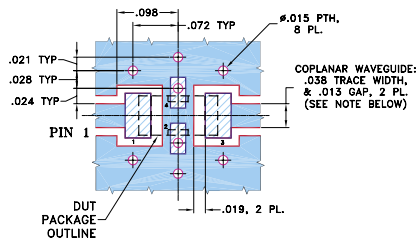


Suggested Layout,  
Tolerance to be within ±.002

## Outline Dimensions (inch)

A	B	C	D	E	F	G	H	J	K	L	M	N	P	wt
.126	.063	.037	.020	.032	.009	.169	.087	.024	.122	.024	.087	.012	.071	grams
3.20	1.60	0.94	0.51	0.81	0.23	4.29	2.21	0.61	3.10	0.61	2.21	0.30	1.80	.020

## Demo Board MCL P/N: TB-270 Suggested PCB Layout (PL-137)



- NOTES: 1. COPLANAR WAVEGUIDE PARAMETERS ARE SHOWN FOR ROGERS RO4350B WITH THICKNESS .020" ± .0015". COPPER: 1/2 OZ. EACH SIDE. FOR OTHER MATERIALS TRACE WIDTH & GAP MAY NEED TO BE MODIFIED.
2. BOTTOM SIDE OF THE PCB IS CONTINUOUS GROUND PLANE.
- DENOTES PCB COPPER LAYOUT WITH SMOBC (SOLDER MASK OVER BARE COPPER)
  - DENOTES COPPER LAND PATTERN FREE OF SOLDER MASK

## Features

- excellent power handling, 9W
- small size
- 5 sections
- temperature stable

## Applications

- harmonic rejection
- VHF/UHF transmitters/receivers
- lab use

CASE STYLE: FV1206

Model	Price	Qty.
LFCN-2000+	\$1.99	(10-49)
LFCN-2000	\$1.99	(10-49)
LFCN-2000D+	\$2.49	(10-49)
LFCN-2000D	\$2.49	(10-49)

+ RoHS compliant in accordance with EU Directive (2002/95/EC)

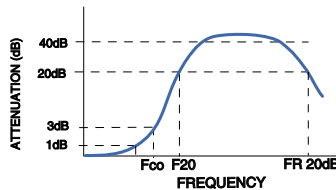
The +Suffix identifies RoHS Compliance. See our web site for RoHS Compliance methodologies and qualifications.

## Electrical Specifications<sup>1</sup> (T<sub>AMB</sub> = 25°C)

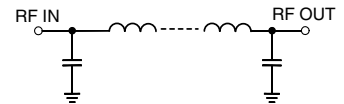
PASSBAND (MHz) (loss < 1.5 dB)	f <sub>co</sub> , MHz Nom. (loss 3 dB)	STOP BAND (MHz) (loss, dB)			VSWR (:1)		NO. OF SECTIONS
		F 20	30	FR 20	Stopband	Passband	
Max.	Typ.	Min.	Typ.	Typ.	Typ.	Typ.	
DC-2000	2275	3000	3100-3500	4600	20	1.3	5

1. For applications requiring DC voltage to be applied to the Input or output, use LFCN-2000D (DC Resistance to ground is 100 Mohms min.)

## typical frequency response

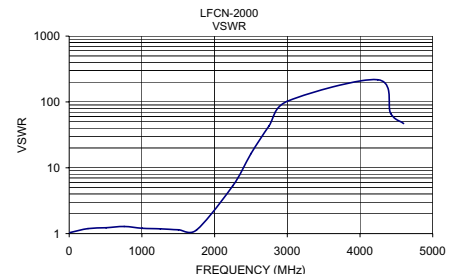
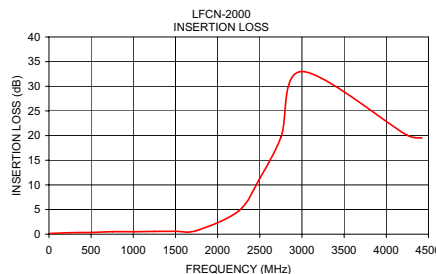


## electrical schematic



## Typical Performance Data at 25°C

Frequency (MHz)	Insertion Loss (dB)	VSWR (:1)
10.00	0.14	1.04
258.75	0.30	1.19
507.50	0.35	1.23
756.25	0.51	1.28
1005.00	0.49	1.21
1253.75	0.56	1.18
1502.50	0.60	1.14
1751.25	0.74	1.13
2250.00	4.73	5.33
2500.00	11.34	16.41
2750.00	19.65	43.44
3000.00	32.99	102.19
4244.00	20.09	217.15
4422.00	19.52	66.82
4600.00	20.32	46.96



designers kit available

Kit No.	No. of Units in Kit	Description	Price \$ per Kit
K2-LFCN	60	5 of each: LFCN-800,-900,-1000,-1200,-1325,-1700,-2000,-2250,-2400,-5000,-6000,-6700	119.95



INTERNET <http://www.minicircuits.com>

P.O. Box 350166, Brooklyn, New York 11235-0003 (718) 934-4500 Fax (718) 332-4661

Distribution Centers NORTH AMERICA 800-654-7949 • 417-335-5935 • Fax 417-335-5945 • EUROPE 44-1252-832600 • Fax 44-1252-837010

Mini-Circuits ISO 9001 & ISO 14001 Certified



REV. G  
M98898  
LFCN-2000  
ED-9913/4  
AD/CP/AM  
060912