



SAW Components

Data Sheet B4182





SAW Components

B4182

Low-Loss Filter for Mobile Communication

1882,5 MHz

Data Sheet



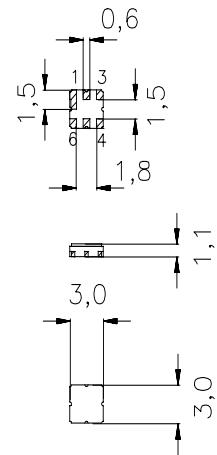
Ceramic package **DCC6C**

Features

- Low-loss RF filter for Multicarrier Basestation (CDMA) , receive path
- Usable passband: 65 MHz
- No matching network required for operation at 50Ω
- Ceramic package for **Surface Mounted Technology (SMT)**
- Hermetically sealed ceramic package
- RoHS compliant

Terminals

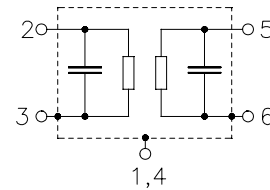
- Ni, gold-plated



Dimensions in mm, approx. weight 0,037 g

Pin configuration

- 2 Input
- 5 Output
- 1, 3, 4, 6 To be grounded



Type	Ordering code	Marking and Package according to	Packing according to
B4182	B39182-B4182-U410	C61157-A7-A67	F61074-V8168-Z000

Electrostatic Sensitive Device (ESD)

Maximum ratings

Operable temperature range	T	- 40 / + 85	°C	Machine Model, 10 pulses source and load impedance 50 Ω continuous wave, 85 °C continuous wave, 55 °C
Storage temperature range	T_{stg}	- 40 / + 85	°C	
ESD voltage	V_{ESD}^*	50*	V	
Input power max.				
1930,0 ... 1990,0 MHz	P_{IN}	12	dBm	
	P_{IN}	15	dBm	

* - acc. to JESD22-A115A (Machine Model), 10 negative & 10 positive pulses



Characteristics

Operating temperature range: $T = +25 \pm 2 \text{ }^\circ\text{C}$
 Terminating source impedance: $Z_S = 50 \text{ } \Omega$
 Terminating load impedance: $Z_L = 50 \text{ } \Omega$

				min.	typ.	max.	
Center frequency	f_c				1882,5		MHz
Maximum insertion attenuation	α_{\max}			—	2,5	3,2	dB
		1850,0 ... 1915,0	MHz				
Amplitude ripple (p-p)	$\Delta\alpha$			—	0,8	1,4	dB
		1850,0 ... 1915,0	MHz				
Return loss				9,0	10,0	—	dB
		1850,0 ... 1915,0	MHz				
Attenuation	α_{abs}						
		800,0 ... 1400,0	MHz	24,0	28,0	—	dB
		1400,0 ... 1745,0	MHz	25,0	28,0	—	dB
		1930,0 ... 1940,0	MHz	5,0	10,0	—	dB
		1940,0 ... 3000,0	MHz	20,0	23,0	—	dB



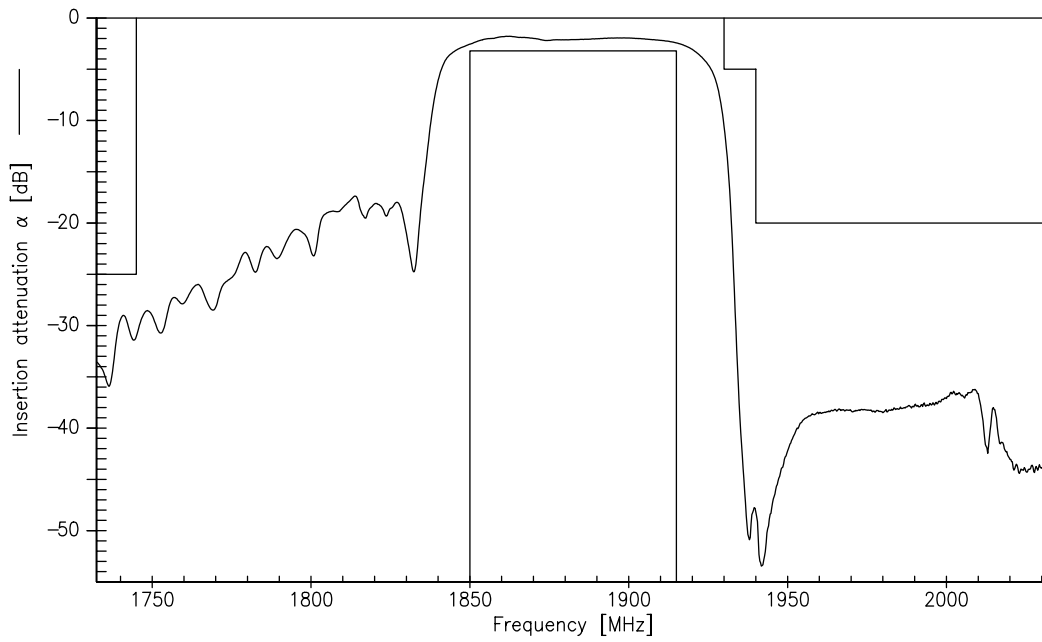
Characteristics

Operating temperature range: $T = 0$ to $+85^{\circ}\text{C}$
 Terminating source impedance: $Z_S = 50\ \Omega$
 Terminating load impedance: $Z_L = 50\ \Omega$

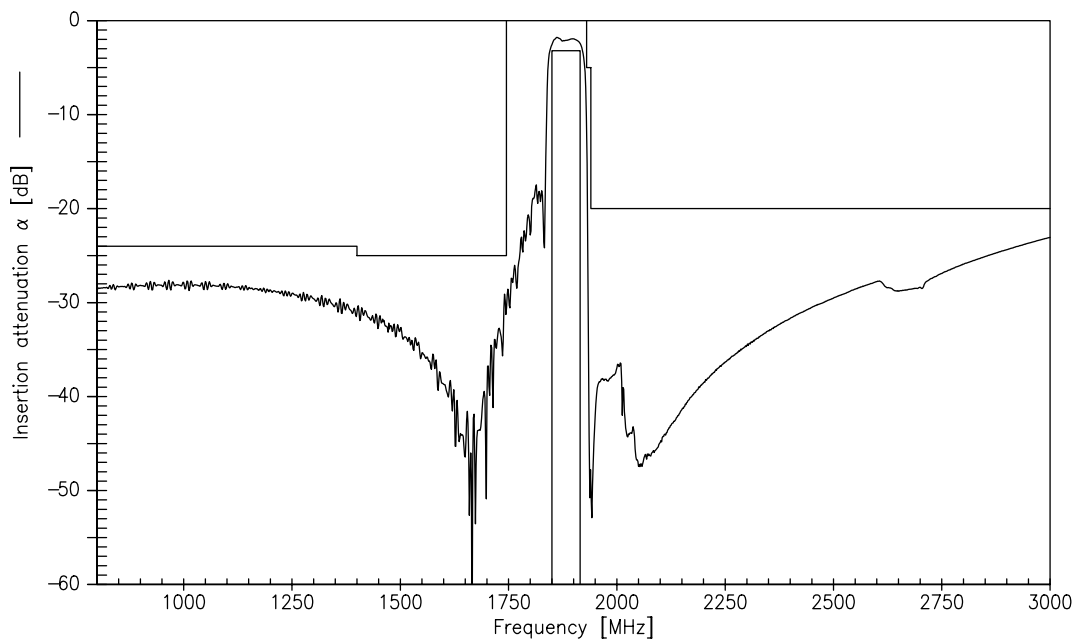
				min.	typ.	max.	
Center frequency		f_c			1882,5		MHz
Maximum insertion attenuation	1850,0 ... 1915,0	MHz	α_{\max}	—	2,9	3,5	dB
Amplitude ripple (p-p)	1850,0 ... 1915,0	MHz	$\Delta\alpha$	—	1,1	1,7	dB
Return loss	1850,0 ... 1915,0	MHz		9,0	10,0	—	dB
Attenuation	800,0 ... 1400,0	MHz	α_{abs}	24,0	28,0	—	
	1400,0 ... 1746,0	MHz		25,0	28,0	—	dB
	1930,0 ... 1940,0	MHz		5,0	7,0	—	dB
	1940,0 ... 3000,0	MHz		20,0	23,0	—	dB



Transfer function (Narrowband measurement)



Transfer function (Wideband measurement)





SAW Components	B4182
Low-Loss Filter for Mobile Communication	1882,5 MHz
Data Sheet	

Published by EPCOS AG
Surface Acoustic Wave Components Division, SAW MC PD
P.O. Box 80 17 09, 81617 Munich, GERMANY

© EPCOS AG 2006. Reproduction, publication and dissemination of this brochure and the information contained therein without EPCOS' prior express consent is prohibited.

Purchase orders are subject to the General Conditions for the Supply of Products and Services of the Electrical and Electronics Industry recommended by the ZVEI (German Electrical and Electronic Manufacturers' Association), unless otherwise agreed.

This brochure replaces the previous edition.

For questions on technology, prices and delivery please contact the Sales Offices of EPCOS AG or the international Representatives.

Due to technical requirements components may contain dangerous substances. For information on the type in question please also contact one of our Sales Offices.