

Multi-stage general-purpose filter FN 2060

- Current ratings from 1 to 30A
 - High differential and common mode attenuation
 - Optional medical versions (B types)
 - Optional safety versions (A types)
-
- Nennströme von 1 bis 30A
 - Hohe Gleich- und Gegentaktämpfung
 - Optionale medizinische Versionen (Typ B)
 - Optionale Sicherheitsversionen (Typ A)
-
- Courants de service de 1 à 30A
 - Bonne atténuation en modes différentiel et commun
 - En option version pour appareils médicaux (type B)
 - En option version pour la sécurité (type A)



Filter selection table

Choose the filter FN xxxx-x with the required current rating and features, and add /?? to determine input/output (line/load) connection style. Example: FN 2060-10/06 is a 10A filter with fast-on connections.

Approvals



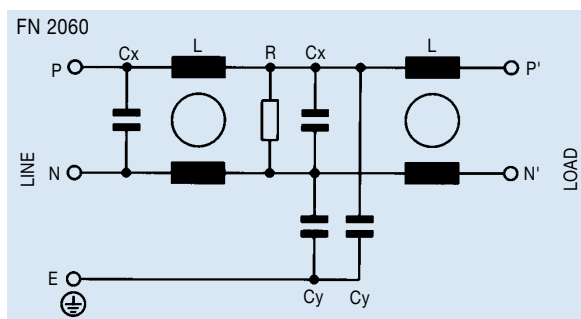
Filter	Connections			Current ratings at 40°C (25°) A	Inductance L mH	Capacitance		Resistance R MΩ	Housing	Weight g
	/06	/07	/08			Cx μF	Cy nF			
FN 2060 -1 /??	/06	/07		1 (1.15)	12	0.22	4.7	1	H2	120
FN 2060 -3 /??	/06	/07		3 (3.45)	2.5	0.22	4.7	1	H2	120
FN 2060 -6 /??	/06	/07		6 (6.9)	0.97	0.22	4.7	1	H2	120
FN 2060 -10 /??	/06	/07		10 (11.5)	0.8	0.47	4.7	0.47	K1	190
FN 2060 -12 /??	/06	/07		12 (13.8)	0.58	0.47	4.7	0.47	K1	190
FN 2060 -16 /??	/06	/07	/08	16 (18.4)	0.65	0.33	4.7	1	K2	260
FN 2060 -20 /??	/06		/08	20 (23)	0.6	1	4.7	0.22	P	480
FN 2060 -30 /??			/08	30 (34.5)	0.6	1	10	0.22	L2	950

Additional specifications

Filter type	Maximum operating voltage		Operating frequency Hz	Hipot test voltage		MTBF Per Mil-HB-217F at 40°C 230V hours	Maximum leakage mA/phase
	VAC	Hz		PN→E VAC	P→N VDC		
Standard types	250	50/60	DC to 400	2000	1700	950 000	0.4*
B medical types (no Y capacitors)	250	50/60	DC to 400	2500	1700	1 650 000	0.002
A safety types (lower capacitance)	250	50/60	DC to 400	2500	1700	950 000	0.040

* 1mA for 30A version

Electrical schematic

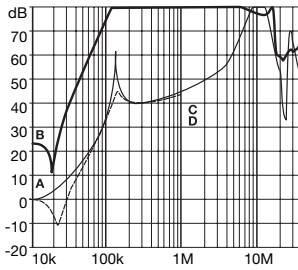


See tables for component values.

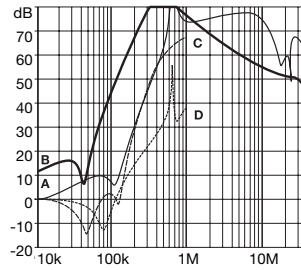
FN 2060 insertion loss

Per CISPR 17; A = 50Ω/50Ω sym, B = 50Ω/50Ω asym, C = 0.1Ω/100Ω sym, D = 100Ω/0.1Ω sym

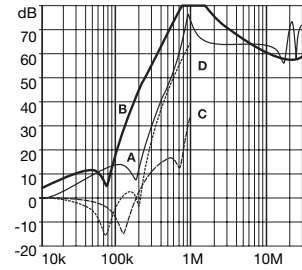
1A types



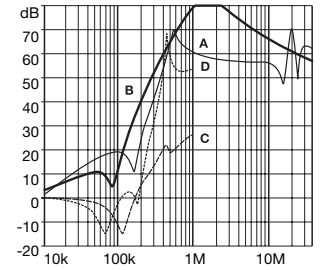
3A types



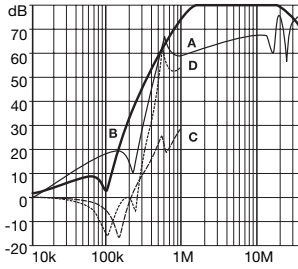
6A types



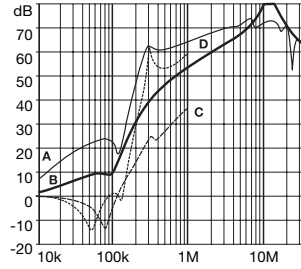
10A types (12A*)



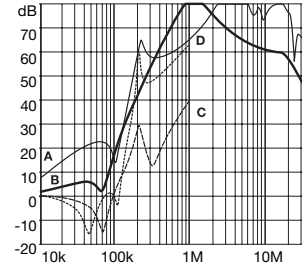
16A types



20A types



30A types



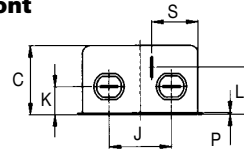
* attenuation performance of the 12A version is similar to the 10A component.

Mechanical data

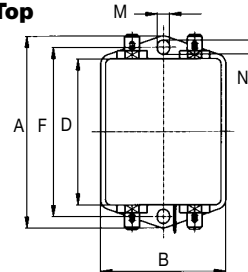
Housing style	H2	K1	K2	Tol. ± mm
A	71	85		± 0.5
B	46.6	54		± 0.5
C	29.3	30.3	40.3	± 0.5
D	50.5	64.8		± 0.5
F	61	75		± 0.3
J	21	27		± 0.2
K	10.8/8.3 [§]	12.3/8.3 [§]		± 0.5
L	19.3	20.8/23.3	29.8	± 0.5
M		5.3		± 0.1
N		6.3		± 0.1
P		0.7		± 0.1
S	20.1/30.5 [§]	19.9/34.9 [§]	11.4/34.9 [§]	± 0.5

[§] with /07 connections
wire length of /07: 140 +5 mm

Front



Top

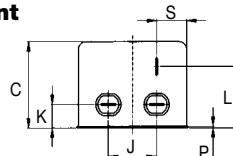


Housings H2, K1 and K2

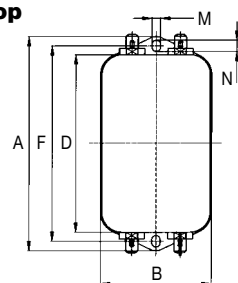
Housing style	P	L2	Tol.* ± mm
A	113.5	119 ± 0.5	± 1
B	57.5	85.5	± 1
C	45.4 ± 1.2	57.6	± 1
D	94	98.5	± 1
F	103	109	± 0.3
J	25	40	± 0.2
K	12.4	15.6	± 0.5
L	32.4		± 0.5
M	4.4	4.4	± 0.1
N	6	7.4	± 0.1
P	0.9	1.2	± 0.1
Q		66	± 0.3
R		51	± 0.2
S	15.5		± 0.5

* Measurements share this common tolerance unless otherwise stated.

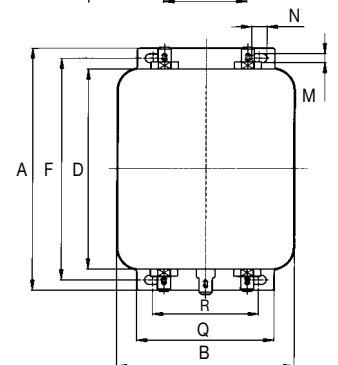
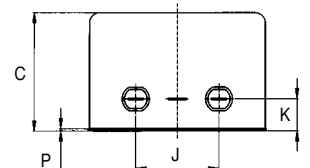
Front



Top



Housing P



Housing L2

All dimensions in mm; 1 inch = 25.4 mm