

# 74FST3345

## 8-Bit Bus Switch

The ON Semiconductor 74FST3345 is an 8-bit, high performance switch. The device is CMOS TTL compatible when operating between 4 and 5.5 Volts. The device exhibits extremely low  $R_{ON}$  and adds nearly zero propagation delay. The device adds no noise or ground bounce to the system.

The device consists of an 8-bit switch with two Output/Enable pins ( $OE$  and  $\overline{OE}$ ).

- $R_{ON} < 4 \Omega$  Typical
- Less Than 0.25 ns–Max Delay Through Switch
- Nearly Zero Standby Current
- No Circuit Bounce
- Control Inputs are TTL/CMOS Compatible
- Pin-For-Pin Compatible with QS3345, FST3345, CBT3345
- All Popular Packages: QSOP–20, TSSOP–20, SOIC–20

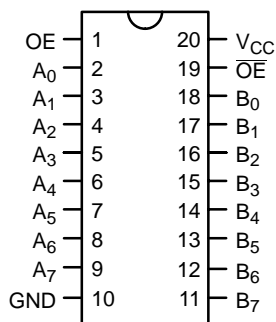


Figure 1. 20-Lead Pinout

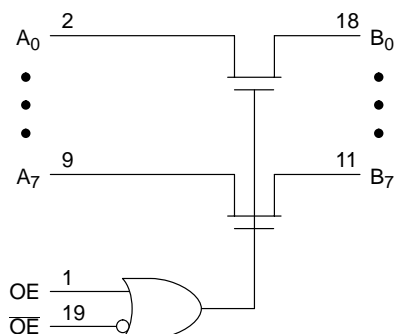


Figure 2. Logic Diagram

### TRUTH TABLE

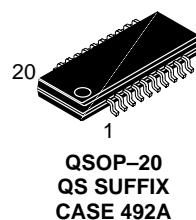
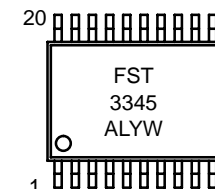
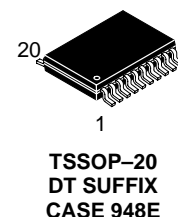
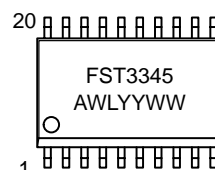
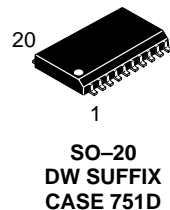
| Inputs |                 | Function   |
|--------|-----------------|------------|
| OE     | $\overline{OE}$ |            |
| X      | L               | Connect    |
| H      | X               | Connect    |
| L      | H               | Disconnect |



ON Semiconductor™

<http://onsemi.com>

### MARKING DIAGRAMS



A = Assembly Location  
L, WL = Wafer Lot  
Y = Year  
W, WW = Work Week

### PIN NAMES

| Pin                                | Description        |
|------------------------------------|--------------------|
| $\overline{OE}_1, \overline{OE}_2$ | Bus Switch Enables |
| 1A, 2A                             | Bus A              |
| 1B, 2B                             | Bus B              |

### ORDERING INFORMATION

| Device        | Package  | Shipping        |
|---------------|----------|-----------------|
| 74FST3345DW   | SO–20    | 38 Units/Rail   |
| 74FST3345DWR2 | SO–20    | 1000 Units/Reel |
| 74FST3345DT   | TSSOP–20 | 75 Units/Rail   |
| 74FST3345DTR2 | TSSOP–20 | 2500 Units/Reel |
| 74FST3345QS   | QSOP–20  | 55 Units/Rail   |
| 74FST3345QSR  | QSOP–20  | 2500 Units/Reel |

## MAXIMUM RATINGS

| Symbol                | Parameter  | Value                | Unit |
|-----------------------|--|----------------------|------|
| V <sub>CC</sub>       | DC Supply Voltage  | − 0.5 to + 7.0       | V    |
| V <sub>I</sub>        | DC Input Voltage   | − 0.5 to + 7.0       | V    |
| V <sub>O</sub>        | DC Output Voltage  | − 0.5 to + 7.0       | V    |
| I <sub>IK</sub>       | DC Input Diode Current<br>V <sub>I</sub> < GND                               | − 50                 | mA   |
| I <sub>OK</sub>       | DC Output Diode Current<br>V <sub>O</sub> < GND                              | − 50                 | mA   |
| I <sub>O</sub>        | DC Output Sink Current   | 128                  | mA   |
| I <sub>CC</sub>       | DC Supply Current per Supply Pin   | ± 100                | mA   |
| I <sub>GND</sub>      | DC Ground Current per Ground Pin   | ± 100                | mA   |
| T <sub>STG</sub>      | Storage Temperature Range  | − 65 to + 150        | °C   |
| T <sub>L</sub>        | Lead Temperature, 1 mm from Case for 10 Seconds                              | 260                  | °C   |
| T <sub>J</sub>        | Junction Temperature Under Bias  | + 150                | °C   |
| θ <sub>JA</sub>       | Thermal Resistance (Note 1)<br>SOIC<br>TSSOP<br>QSOP                         | 96<br>128<br>200     | °C/W |
| MSL                   | Moisture Sensitivity   | Level 1              |      |
| F <sub>R</sub>        | Flammability Rating<br>Oxygen Index: 28 to 34                                | UL 94 V−0 @ 0.125 in |      |
| V <sub>ESD</sub>      | ESD Withstand Voltage<br>Human Body Model (Note 2)<br>Machine Model (Note 3) | > 2000<br>> 200      | V    |
| I <sub>LATCH-UP</sub> | Latch-Up Performance<br>Above V <sub>CC</sub> and Below GND at 85°C (Note 4) | ± 500                | mA   |

Maximum Ratings are those values beyond which damage to the device may occur. Exposure to these conditions or conditions beyond those indicated may adversely affect device reliability. Functional operation under absolute maximum-rated conditions is not implied. Functional operation should be restricted to the Recommended Operating Conditions.

1. Measured with minimum pad spacing on an FR4 board, using 10 mm-by-1 inch, 2-ounce copper trace with no air flow.
2. Tested to EIA/JESD22-A114-A.
3. Tested to EIA/JESD22-A115-A.
4. Tested to EIA/JESD78.

## RECOMMENDED OPERATING CONDITIONS

| Symbol          | Parameter  | Min    | Max             | Unit |
|-----------------|--|--------|-----------------|------|
| V <sub>CC</sub> | Supply Voltage<br>Operating, Data Retention Only                         | 4.0    | 5.5             | V    |
| V <sub>I</sub>  | Input Voltage<br>(Note )   | 0      | 5.5             | V    |
| V <sub>O</sub>  | Output Voltage<br>(HIGH or LOW State)                                    | 0      | V <sub>CC</sub> | V    |
| T <sub>A</sub>  | Operating Free-Air Temperature   | − 40   | + 85            | °C   |
| Δt/ΔV           | Input Transition Rise or Fall Rate<br>Switch Control Input<br>Switch I/O | 0<br>0 | 5<br>DC         | ns/V |

5. Unused control inputs may not be left open. All control inputs must be tied to a high or low logic input voltage level.

## DC ELECTRICAL CHARACTERISTICS

| Symbol           | Parameter                             | Conditions   | V <sub>CC</sub><br>(V) | T <sub>A</sub> = -40°C to +85°C |      |      | Unit |
|------------------|---------------------------------------|--|------------------------|---------------------------------|------|------|------|
|                  |                                       |  |                        | Min                             | Typ* | Max  |      |
| V <sub>IK</sub>  | Clamp Diode Resistance                | I <sub>IN</sub> = -18mA  | 4.5                    |                                 |      | -1.2 | V    |
| V <sub>IH</sub>  | High-Level Input Voltage              |  | 4.0 to 5.5             | 2.0                             |      |      | V    |
| V <sub>IL</sub>  | Low-Level Input Voltage               |  | 4.0 to 5.5             |                                 |      | 0.8  | V    |
| I <sub>I</sub>   | Input Leakage Current                 | 0 ≤ V <sub>IN</sub> ≤ 5.5 V                                    | 5.5                    |                                 |      | ±1.0 | μA   |
| I <sub>OZ</sub>  | OFF-STATE Leakage Current             | 0 ≤ A, B ≤ V <sub>CC</sub>                                     | 5.5                    |                                 |      | ±1.0 | μA   |
| R <sub>ON</sub>  | Switch On Resistance (Note 6)         | V <sub>IN</sub> = 0 V, I <sub>IN</sub> = 64 mA                 | 4.5                    |                                 | 4    | 7    | Ω    |
|                  |                                       | V <sub>IN</sub> = 0 V, I <sub>IN</sub> = 30 mA                 | 4.5                    |                                 | 4    | 7    |      |
|                  |                                       | V <sub>IN</sub> = 2.4 V, I <sub>IN</sub> = 15 mA               | 4.5                    |                                 | 8    | 15   |      |
|                  |                                       | V <sub>IN</sub> = 2.4 V, I <sub>IN</sub> = 15 mA               | 4.0                    |                                 | 11   | 20   |      |
| I <sub>CC</sub>  | Quiescent Supply Current              | V <sub>IN</sub> = V <sub>CC</sub> or GND, I <sub>OUT</sub> = 0 | 5.5                    |                                 |      | 3    | μA   |
| ΔI <sub>CC</sub> | Increase In I <sub>CC</sub> per Input | One input at 3.4 V, Other inputs at V <sub>CC</sub> or GND     | 5.5                    |                                 |      | 2.5  | mA   |

\*Typical values are at V<sub>CC</sub> = 5.0 V and T<sub>A</sub> = 25°C.

6. Measured by the voltage drop between A and B pins at the indicated current through the switch.

## AC ELECTRICAL CHARACTERISTICS

| Symbol                                 | Parameter                         | Conditions  | Figures | Limits                          |      |                         |      | Unit |
|--|-----------------------------------|---|---------|---------------------------------|------|-------------------------|------|------|
|  |                                   |   |         | T <sub>A</sub> = −40°C to +85°C |      |                         |      |      |
|  |                                   |   |         | V <sub>CC</sub> = 4.5 to 5.5 V  |      | V <sub>CC</sub> = 4.0 V |      |      |
|  |                                   |   |         | Min                             | Max  | Min                     | Max  |      |
| t <sub>PHL</sub> ,<br>t <sub>PLH</sub> | Prop Delay Bus to Bus<br>(Note 7) | V <sub>I</sub> = OPEN   | 3 and 4 |                                 | 0.25 |                         | 0.25 | ns   |
| t <sub>PZH</sub> ,<br>t <sub>PZL</sub> | Output Enable Time                | V <sub>I</sub> = 7 V for t <sub>PZL</sub><br>V <sub>I</sub> = OPEN for t <sub>PZH</sub> | 3 and 4 | 1.5                             | 6.5  |                         | 7.0  | ns   |
| t <sub>PHZ</sub> ,<br>t <sub>PLZ</sub> | Output Disable Time               | V <sub>I</sub> = 7 V for t <sub>PLZ</sub><br>V <sub>I</sub> = OPEN for t <sub>PHZ</sub> | 3 and 4 | 1.0                             | 8.0  |                         | 8.2  | ns   |

7. This parameter is guaranteed by design but is not tested. The bus switch contributes no propagation delay other than the RC delay of the typical On resistance of the switch and the 50 pF load capacitance, when driven by an ideal voltage source (zero output impedance).

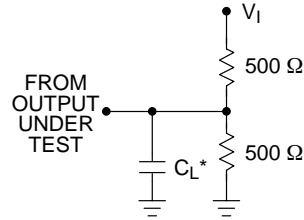
## CAPACITANCE (Note 8)

| Symbol           | Parameter                     | Conditions                                       | Typ | Max | Unit |
|------------------|-------------------------------|--|-----|-----|------|
| C <sub>IN</sub>  | Control Pin Input Capacitance | V <sub>CC</sub> = 5.0 V                          | 3   |     | pF   |
| C <sub>I/O</sub> | Input/Output Capacitance      | V <sub>CC</sub> , $\overline{\text{OE}}$ = 5.0 V | 5   |     | pF   |

8. T<sub>A</sub> = +25°C, f = 1 MHz, Capacitance is characterized but not tested.

# 74FST3345

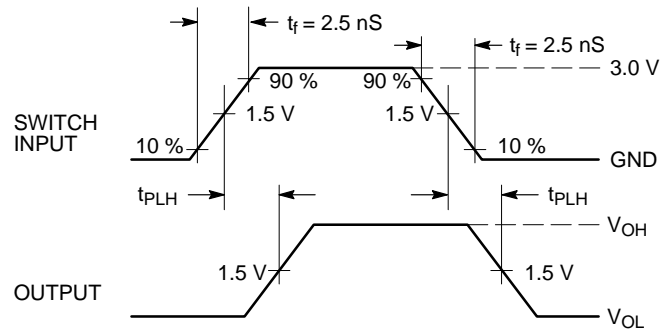
## AC Loading and Waveforms



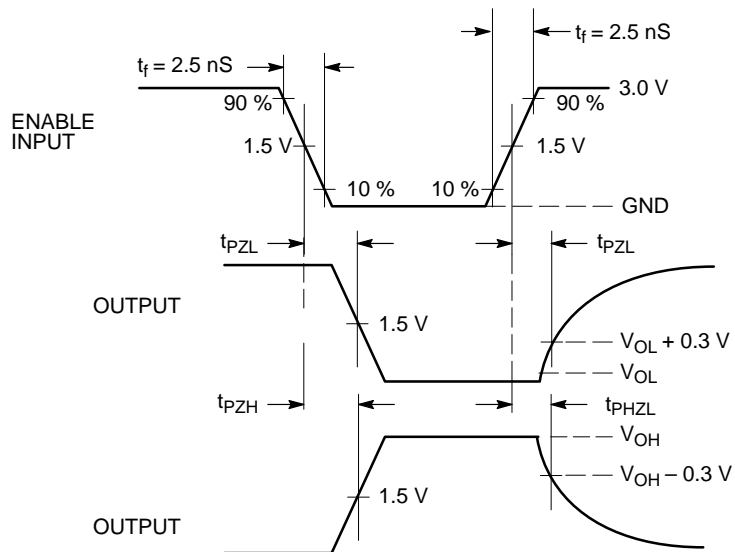
### NOTES:

1. Input driven by 50  $\Omega$  source terminated in 50  $\Omega$ .
  2.  $C_L$  includes load and stray capacitance.
- \* $C_L = 50$  pF

**Figure 3. AC Test Circuit**



**Figure 4. Propagation Delays**



**Figure 5. Enable/Disable Delays**

## PACKAGE DIMENSIONS

The drawing shows a 10x20mm connector. The top view includes dimensions  $10 \times H$ ,  $20$ ,  $11$ ,  $10$ , and  $20 \times B$ . It also features a circular feature with a crosshair and a dashed line. The side view shows a length of  $18 \times e$  and a height of  $10$ . Labels include  $A$ ,  $B$ ,  $A1$ ,  $T$ , and  $SEATING PLANE$ .

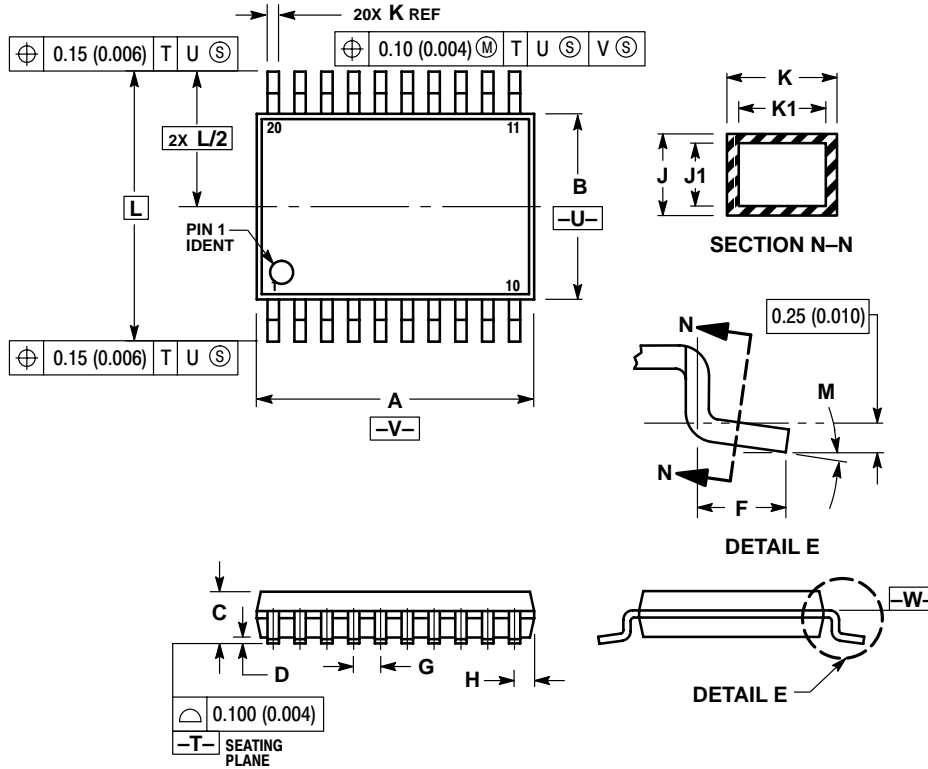
- NOTES:**
1. DIMENSIONS ARE IN MILLIMETERS.
  2. INTERPRET DIMENSIONS AND TOLERANCES PER ASME Y14.5M, 1994.
  3. DIMENSIONS D AND E DO NOT INCLUDE MOLD PROTRUSION.
  4. MAXIMUM MOLD PROTRUSION 0.15 PER SIDE.
  5. DIMENSION B DOES NOT INCLUDE DAMBAR PROTRUSION. ALLOWABLE PROTRUSION SHALL BE 0.13 TOTAL IN EXCESS OF B DIMENSION AT MAXIMUM MATERIAL CONDITION.

| DIM | MILLIMETERS |       |
|-----|-------------|-------|
|     | MIN         | MAX   |
| A   | 2.35        | 2.65  |
| A1  | 0.10        | 0.25  |
| B   | 0.35        | 0.49  |
| C   | 0.23        | 0.32  |
| D   | 12.65       | 12.95 |
| E   | 7.40        | 7.60  |
| e   | 1.27 BSC    |       |
| H   | 10.05       | 10.55 |
| h   | 0.25        | 0.75  |
| L   | 0.50        | 0.90  |
| Ø   | 0°          | 7°    |

# 74FST3345

## PACKAGE DIMENSIONS

TSSOP-20  
DT SUFFIX  
CASE 948E-02  
ISSUE A



### NOTES:

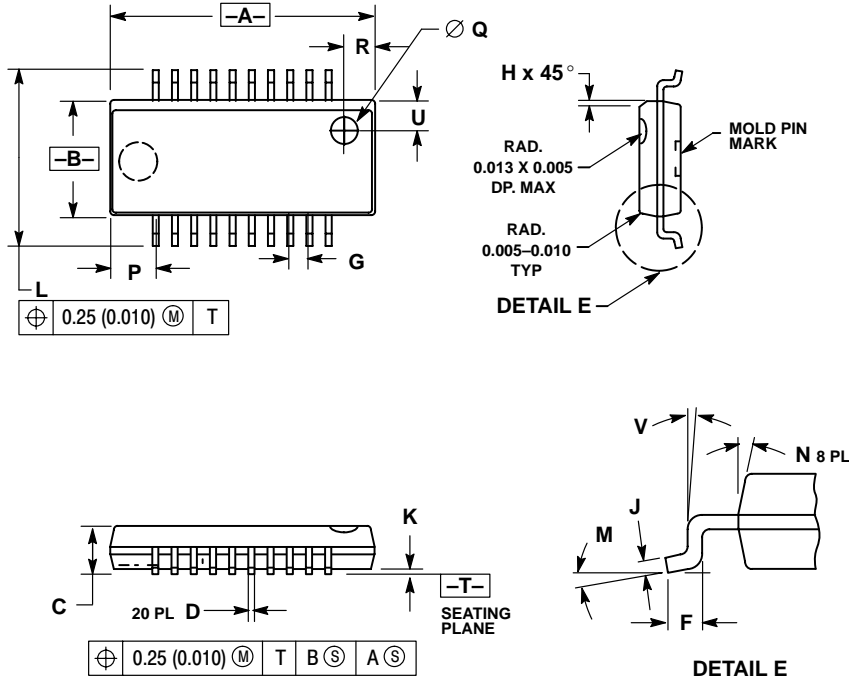
1. DIMENSIONING AND TOLERANCING PER ANSI Y14.5M, 1982.
2. CONTROLLING DIMENSION: MILLIMETER.
3. DIMENSION A DOES NOT INCLUDE MOLD FLASH, PROTRUSIONS OR GATE BURRS. MOLD FLASH OR GATE BURRS SHALL NOT EXCEED 0.15 (0.006) PER SIDE.
4. DIMENSION B DOES NOT INCLUDE INTERLEAD FLASH OR PROTRUSION. INTERLEAD FLASH OR PROTRUSION SHALL NOT EXCEED 0.25 (0.010) PER SIDE.
5. DIMENSION K DOES NOT INCLUDE DAMBAR PROTRUSION. ALLOWABLE DAMBAR PROTRUSION SHALL BE 0.08 (0.003) TOTAL IN EXCESS OF THE K DIMENSION AT MAXIMUM MATERIAL CONDITION.
6. TERMINAL NUMBERS ARE SHOWN FOR REFERENCE ONLY.
7. DIMENSION A AND B ARE TO BE DETERMINED AT DATUM PLANE -W-.

| DIM | MILLIMETERS |      | INCHES    |       |
|-----|-------------|------|-----------|-------|
|     | MIN         | MAX  | MIN       | MAX   |
| A   | 6.40        | 6.60 | 0.252     | 0.260 |
| B   | 4.30        | 4.50 | 0.169     | 0.177 |
| C   | ---         | 1.20 | ---       | 0.047 |
| D   | 0.05        | 0.15 | 0.002     | 0.006 |
| F   | 0.50        | 0.75 | 0.020     | 0.030 |
| G   | 0.65 BSC    |      | 0.026 BSC |       |
| H   | 0.27        | 0.37 | 0.011     | 0.015 |
| J   | 0.09        | 0.20 | 0.004     | 0.008 |
| J1  | 0.09        | 0.16 | 0.004     | 0.006 |
| K   | 0.19        | 0.30 | 0.007     | 0.012 |
| K1  | 0.19        | 0.25 | 0.007     | 0.010 |
| L   | 6.40 BSC    |      | 0.252 BSC |       |
| M   | 0°          | 8°   | 0°        | 8°    |

# 74FST3345

## PACKAGE DIMENSIONS


QSOP-20  
QS SUFFIX  
CASE 492A-01  
ISSUE O



### NOTES:

1. DIMENSIONING AND TOLERANCING PER ANSI Y14.5M, 1982.
2. CONTROLLING DIMENSION: INCH.
3. THE BOTTOM PACKAGE SHALL BE BIGGER THAN THE TOP PACKAGE BY 4 MILS (NOTE: LEAD SIDE ONLY). BOTTOM PACKAGE DIMENSION SHALL FOLLOW THE DIMENSION STATED IN THIS DRAWING.
4. PLASTIC DIMENSIONS DOES NOT INCLUDE MOLD FLASH OR PROTRUSIONS. MOLD FLASH OR PROTRUSIONS SHALL NOT EXCEED 6 MILS PER SIDE.
5. BOTTOM EJECTOR PIN WILL INCLUDE THE COUNTRY OF ORIGIN (COO) AND MOLD CAVITY I.D.

| DIM | INCHES    |          | MILLIMETERS |       |
|-----|-----------|----------|-------------|-------|
|     | MAX       | MIN      | MAX         | MIN   |
| A   | 0.337     | 0.344    | 8.56        | 8.74  |
| B   | 0.150     | 0.157    | 3.81        | 3.99  |
| C   | 0.061     | 0.068    | 1.55        | 1.73  |
| D   | 0.008     | 0.012    | 0.20        | 0.31  |
| F   | 0.016     | 0.035    | 0.41        | 0.89  |
| G   | 0.025 BSC | 0.64 BSC |             |       |
| H   | 0.008     | 0.018    | 0.20        | 0.46  |
| J   | 0.0098    | 0.0075   | 0.249       | 0.191 |
| K   | 0.004     | 0.010    | 0.10        | 0.25  |
| L   | 0.230     | 0.244    | 5.84        | 6.20  |
| M   | 0°        | 8°       | 0°          | 8°    |
| N   | 0°        | 7°       | 0°          | 7°    |
| P   | 0.052     | 0.062    | 1.32        | 1.58  |
| Q   | 0.035 DIA | 0.89 DIA |             |       |
| R   | 0.035     | 0.045    | 0.89        | 1.14  |
| U   | 0.035     | 0.045    | 0.89        | 1.14  |
| V   | 0°        | 8°       | 0°          | 8°    |

**ON Semiconductor** and  are trademarks of Semiconductor Components Industries, LLC (SCILLC). SCILLC reserves the right to make changes without further notice to any products herein. SCILLC makes no warranty, representation or guarantee regarding the suitability of its products for any particular purpose, nor does SCILLC assume any liability arising out of the application or use of any product or circuit, and specifically disclaims any and all liability, including without limitation special, consequential or incidental damages. "Typical" parameters which may be provided in SCILLC data sheets and/or specifications can and do vary in different applications and actual performance may vary over time. All operating parameters, including "Typicals" must be validated for each customer application by customer's technical experts. SCILLC does not convey any license under its patent rights nor the rights of others. SCILLC products are not designed, intended, or authorized for use as components in systems intended for surgical implant into the body, or other applications intended to support or sustain life, or for any other application in which the failure of the SCILLC product could create a situation where personal injury or death may occur. Should Buyer purchase or use SCILLC products for any such unintended or unauthorized application, Buyer shall indemnify and hold SCILLC and its officers, employees, subsidiaries, affiliates, and distributors harmless against all claims, costs, damages, and expenses, and reasonable attorney fees arising out of, directly or indirectly, any claim of personal injury or death associated with such unintended or unauthorized use, even if such claim alleges that SCILLC was negligent regarding the design or manufacture of the part. SCILLC is an Equal Opportunity/Affirmative Action Employer.

## PUBLICATION ORDERING INFORMATION

### Literature Fulfillment:

Literature Distribution Center for ON Semiconductor  
P.O. Box 5163, Denver, Colorado 80217 USA  
**Phone:** 303-675-2175 or 800-344-3860 Toll Free USA/Canada  
**Fax:** 303-675-2176 or 800-344-3867 Toll Free USA/Canada  
**Email:** ONlit@hibbertco.com

**N. American Technical Support:** 800-282-9855 Toll Free USA/Canada

**JAPAN:** ON Semiconductor, Japan Customer Focus Center  
4-32-1 Nishi-Gotanda, Shinagawa-ku, Tokyo, Japan 141-0031  
**Phone:** 81-3-5740-2700  
**Email:** r14525@onsemi.com

**ON Semiconductor Website:** <http://onsemi.com>

For additional information, please contact your local Sales Representative.