

**Uncompensated, High Slew Rate Operational Amplifier**

The HA-2520/883 is a monolithic operational amplifier which delivers an unsurpassed combination of specifications for slew rate, bandwidth and settling time. This dielectrically isolated amplifier is designed for closed loop gains of 3 or greater without external compensation. In addition, this high performance component also provides low offset current and high input impedance.

The 100V/μs (min) slew rate and fast settling time of this amplifier make it ideal for pulse amplification and data acquisition designs. To insure compliance with slew rate and transient response specifications, the device is 100% tested for AC performance characteristics over full temperature. This device is a valuable component for RF and video circuitry requiring wideband operation. For accurate signal conditioning designs, the HA-2520/883's superior dynamic specifications are complemented by 25nA (max) offset current and offset voltage adjust capability.

**Ordering Information**

PART NUMBER	TEMP. RANGE (°C)	PACKAGE	PKG. NO.
HA2-2520/883	-55°C to +125°C	8 Pin Can	T8.C

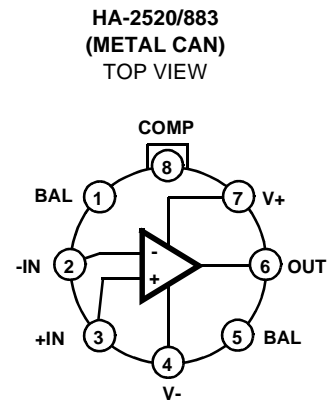
**Applications**

- Data Acquisition Systems
- RF Amplifiers
- Video Amplifiers
- Signal Generators
- Pulse Amplification

**Features**

- This Circuit is Processed in Accordance to MIL-STD-883 and is Fully Conformant Under the Provisions of Paragraph 1.2.1.
- High Slew Rate ..... 100V/μs (Min)  
..... 120V/μs (Min)
- Wide Power Bandwidth ..... 1.5MHz (Min)
- Wide Gain Bandwidth..... 10MHz (Min)  
..... 20MHz (Typ)
- High Input Impedance ..... 50MΩ (Min)  
..... 100MΩ (Typ)
- Low Offset Current..... 25nA (Min)  
..... 10nA (Typ)
- Fast Settling (0.1% of 10V Step) ..... 200ns (Typ)
- Low Quiescent Supply Current ..... 6mA (Max)

**Pinout**



**Absolute Maximum Ratings**

Voltage Between V+ and V- Terminals .....40V  
 Differential Input Voltage .....15V  
 Voltage at Either Input Terminal ..... V+ to V-  
 Peak Output Current ..... 50mA  
 Junction Temperature .....+175°C  
 Storage Temperature Range.....-65°C to +150°C  
 ESD Rating .....<2000V  
 Lead Temperature (Soldering 10s) .....+300°C

**Thermal Information**

Thermal Resistance  $\theta_{JA}$   $\theta_{JC}$   
 Metal Can Package ..... 160°C/W 75°C/W  
 Package Power Dissipation Limit at +75°C for  $T_J \leq +175^\circ\text{C}$   
 Metal Can Package ..... 625mW  
 Package Power Dissipation Derating Factor Above +75°C  
 Metal Can Package ..... 6.3mW/°C

CAUTION: Stresses above those listed in "Absolute Maximum Ratings" may cause permanent damage to the device. This is a stress only rating and operation of the device at these or any other conditions above those indicated in the operational sections of this specification is not implied.

NOTE:

- $\theta_{JA}$  is measured with the component mounted on a low effective thermal conductivity test board in free air. See Tech Brief TB379 for details.

**Operating Conditions**

Operating Temperature Range ..... -55°C to +125°C  $V_{INCM} \leq 1/2 (V+ - V-)$   
 Operating Supply Voltage.....  $\pm 15V$   $R_L \geq 2k\Omega$

**TABLE 1. DC ELECTRICAL PERFORMANCE CHARACTERISTICS**

Device Tested at:  $V_{SUPPLY} = \pm 15V$ ,  $R_{SOURCE} = 100\Omega$ ,  $R_{LOAD} = 500k\Omega$ ,  $V_{OUT} = 0V$ , Unless Otherwise Specified.

PARAMETERS	SYMBOL	CONDITIONS	GROUP A SUBGROUPS	TEMPERATURE	HA-2520/883		UNITS
					MIN	MAX	
Input Offset Voltage	$V_{IO}$	$V_{CM} = 0V$	1	+25°C	-8	8	mV
			2, 3	+125°C, -55°C	-10	10	mV
Input Bias Current	+IB	$V_{CM} = 0V$ , $+R_S = 100k\Omega$ , $-R_S = 100\Omega$	1	+25°C	-200	200	nA
			2, 3	+125°C, -55°C	-400	400	nA
	-IB	$V_{CM} = 0V$ , $+R_S = 100\Omega$ , $-R_S = 100k\Omega$	1	+25°C	-200	200	nA
			2, 3	+125°C, -55°C	-400	400	nA
Input Offset Current	$I_{IO}$	$V_{CM} = 0V$ , $+R_S = 100k\Omega$ , $-R_S = 100k\Omega$	1	+25°C	-25	25	nA
			2, 3	+125°C, -55°C	-50	50	nA
Common Mode Range	+CMR	$V+ = 5V$ , $V- = -25V$	1	+25°C	+10	-	V
			2, 3	+125°C, -55°C	+10	-	V
	-CMR	$V+ = 25V$ , $V- = -5V$	1	+25°C	-	-10	V
			2, 3	+125°C, -55°C	-	-10	V
Large Signal Voltage Gain	+A <sub>VOL</sub>	$V_{OUT} = 0V$ and +10V, $R_L = 2k\Omega$	4	+25°C	10	-	kV/V
			5, 6	+125°C, -55°C	7.5	-	kV/V
	-A <sub>VOL</sub>	$V_{OUT} = 0V$ and -10V, $R_L = 2k\Omega$	4	+25°C	10	-	kV/V
			5, 6	+125°C, -55°C	7.5	-	kV/V
Common Mode Rejection Ratio	+CMRR	$\Delta V_{CM} = +10V$ , $V+ = +5V$ , $V- = -25V$ , $V_{OUT} = -10V$	1	+25°C	80	-	dB
			2, 3	+125°C, -55°C	80	-	dB
	-CMRR	$\Delta V_{CM} = -10V$ , $V+ = +25V$ , $V- = -5V$ , $V_{OUT} = +10V$	1	+25°C	80	-	dB
			2, 3	+125°C, -55°C	80	-	dB
Output Voltage Swing	+V <sub>OUT</sub>	$R_L = 2k\Omega$	4	+25°C	10	-	V
			5, 6	+125°C, -55°C	10	-	V
	-V <sub>OUT</sub>	$R_L = 2k\Omega$	4	+25°C	-	-10	V
			5, 6	+125°C, -55°C	-	-10	V

TABLE 1. DC ELECTRICAL PERFORMANCE CHARACTERISTICS (Continued)

Device Tested at:  $V_{SUPPLY} = \pm 15V$ ,  $R_{SOURCE} = 100\Omega$ ,  $R_{LOAD} = 500k\Omega$ ,  $V_{OUT} = 0V$ , Unless Otherwise Specified.

PARAMETERS	SYMBOL	CONDITIONS	GROUP A SUBGROUPS	TEMPERATURE	HA-2520/883		UNITS
					MIN	MAX	
Output Current	+I <sub>OUT</sub>	V <sub>OUT</sub> = -10V	4	+25°C	10	-	mA
			5, 6	+125°C, -55°C	7.5	-	mA
	-I <sub>OUT</sub>	V <sub>OUT</sub> = +10V	4	+25°C	-	-10	mA
			5, 6	+125°C, -55°C	-	-7.5	mA
Quiescent Power Supply Current	+I <sub>CC</sub>	V <sub>OUT</sub> = 0V, I <sub>OUT</sub> = 0mA	1	+25°C	-	6	mA
			2, 3	+125°C, -55°C	-	6.5	mA
	-I <sub>CC</sub>	V <sub>OUT</sub> = 0V, I <sub>OUT</sub> = 0mA	1	+25°C	-6	-	mA
			2, 3	+125°C, -55°C	-6.5	-	mA
Power Supply Rejection Ratio	+PSRR	$\Delta V_{SUP} = 10V$ , V+ = +20V, V- = -15V, V+ = +10V, V- = -15V	1	+25°C	80	-	dB
			2, 3	+125°C, -55°C	80	-	dB
	-PSRR	$\Delta V_{SUP} = 10V$ , V+ = +15V, V- = -20V, V+ = +15V, V- = -10V	1	+25°C	80	-	dB
			2, 3	+125°C, -55°C	80	-	dB
Offset Voltage Adjustment	+V <sub>IOAdj</sub>	Note 1	1	+25°C	V <sub>IO-1</sub>	-	mV
			2, 3	+125°C, -55°C	V <sub>IO-1</sub>	-	mV
	-V <sub>IOAdj</sub>	Note 1	1	+25°C	V <sub>IO+1</sub>	-	mV
			2, 3	+125°C, -55°C	V <sub>IO+1</sub>	-	mV

NOTE:

- Offset adjustment range is [V<sub>IO</sub>(Measured) ± 1mV] minimum referred to output. This test is for functionality only to assure adjustment through 0V.

TABLE 2. AC ELECTRICAL PERFORMANCE CHARACTERISTICS

Device Tested at:  $V_{SUPPLY} = \pm 15V$ ,  $R_{SOURCE} = 50\Omega$ ,  $R_{LOAD} = 2k\Omega$ ,  $C_{LOAD} = 50pF$ ,  $A_{VCL} = +3V/V$ , Unless Otherwise Specified.

PARAMETERS	SYMBOL	CONDITIONS	GROUP A SUBGROUPS	TEMPERATURE	HA-2520/883		UNITS
					MIN	MAX	
Slew Rate	+SR	V <sub>OUT</sub> = -5V to +5V, 25% ≤ +SR ≤ 75%	7	+25°C	100	-	V/μs
			8A, 8B	+125°C, -55°C	84	-	V/μs
	-SR	V <sub>OUT</sub> = +5V to -5V, 75% ≥ -SR ≥ 25%	7	+25°C	100	-	V/μs
			8A, 8B	+125°C, -55°C	84	-	V/μs
Rise and Fall Time	T <sub>R</sub>	V <sub>OUT</sub> = 0 to +200mV, 10% ≤ T <sub>R</sub> ≤ 90%	7	+25°C	-	50	ns
			8A, 8B	+125°C, -55°C	-	55	ns
	T <sub>F</sub>	V <sub>OUT</sub> = 0 to -200mV, 10% ≤ T <sub>F</sub> ≤ 90%	7	+25°C	-	50	ns
			8A, 8B	+125°C, -55°C	-	55	ns
Overshoot	+OS	V <sub>OUT</sub> = 0 to +200mV	7	+25°C	-	40	%
			8A, 8B	+125°C, -55°C	-	45	%
	-OS	V <sub>OUT</sub> = 0 to -200mV	7	+25°C	-	40	%
			8A, 8B	+125°C, -55°C	-	45	%

**TABLE 3. ELECTRICAL PERFORMANCE CHARACTERISTICS**

Device Characterized at:  $V_{SUPPLY} = \pm 15V$ ,  $R_{LOAD} = 2k\Omega$ ,  $C_{LOAD} = 50pF$ ,  $A_V \geq 3$ ,  $C_{COMP} = 0pF$ , Unless Otherwise Specified.

PARAMETERS	SYMBOL	CONDITIONS	NOTES	TEMPERATURE	HA-2520/883		UNITS
					MIN	MAX	
Differential Input Resistance	$R_{IN}$	$V_{CM} = 0V$	1	+25°C	50	-	MΩ
Full Power Bandwidth	GBWP	$V_O = 200mV$ , $f_O = 10kHz$	1	+25°C	10	-	MHz
		$V_O = 200mV$ , $f_O = 1MHz$	1	+25°C	10	-	MHz
Full Power Bandwidth	FPBW	$V_{PEAK} = 10V$	1, 2	+25°C	1.6	-	MHz
Minimum Closed Loop Stable Gain	CLSG	$R_L = 2k\Omega$ , $C_L = 50pF$	1	-55°C to +125°C	+3	-	V/V
Quiescent Power Consumption	PC	$V_{OUT} = 0V$ , $I_{OUT} = 0mA$	1, 3	-55°C to +125°C	-	195	mW

NOTES:

3. Parameters listed in Table 3 are controlled via design or process parameters and are not directly tested at final production. These parameters are lab characterized upon initial design release, or upon design changes. These parameters are guaranteed by characterization based upon data from multiple production runs which reflect lot to lot and within lot variation.
4. Full Power Bandwidth guarantee based on Slew Rate measurement using  $FPBW = \text{Slew Rate} / (2\pi V_{PEAK})$ .
5. Quiescent Power Consumption based upon Quiescent Supply Current test maximum. (No load on outputs.)

**TABLE 4. ELECTRICAL TEST REQUIREMENTS**

MIL-STD-883 TEST REQUIREMENTS	SUBGROUPS (SEE TABLES 1 AND 2)
Interim Electrical Parameters (Pre Burn-In)	1
Final Electrical Test Parameters	1 (Note 4), 2, 3, 4, 5, 6, 7, 8A, 8B
Group A Test Requirements	1, 2, 3, 4, 5, 6, 7, 8A, 8B
Groups C and D Endpoints	1

NOTE:

6. PDA applies to Subgroup 1 only.

**Die Characteristics**

**DIE DIMENSIONS:**

67 x 57 x 19 mils ± 1 mils  
1700 x 1440 x 483µm ± 25.4µm

**METALLIZATION:**

Type: Al, 1% Cu  
Thickness: 16kÅ ± 2kÅ

**GLASSIVATION:**

Type: Nitride (Si3N4) over Silox (SiO2, 5% Phos.)  
Silox Thickness: 12kÅ ± 2kÅ  
Nitride Thickness: 3.5kÅ ± 1.5kÅ

**WORST CASE CURRENT DENSITY:**

0.26 x 10<sup>5</sup> A/cm<sup>2</sup>

**SUBSTRATE POTENTIAL (Powered Up):**

Unbiased

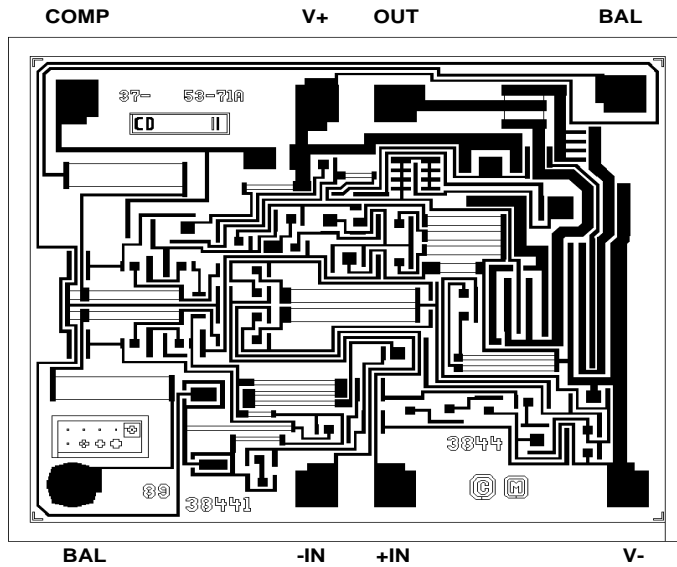
**TRANSISTOR COUNT:**

HA-2520/883: 40

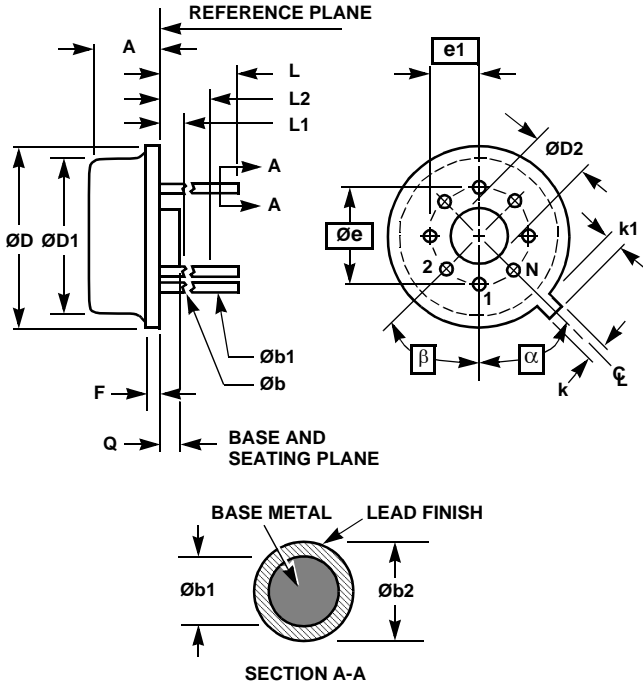
**PROCESS:**

Bipolar Dielectric Isolation

**Metallization Mask Layout**



**Metal Can Packages (Can)**



**T8.C MIL-STD-1835 MACY1-X8 (A1)  
8 LEAD METAL CAN PACKAGE**

SYMBOL	INCHES		MILLIMETERS		NOTES
	MIN	MAX	MIN	MAX	
A	0.165	0.185	4.19	4.70	-
Øb	0.016	0.019	0.41	0.48	1
Øb1	0.016	0.021	0.41	0.53	1
Øb2	0.016	0.024	0.41	0.61	-
ØD	0.335	0.375	8.51	9.40	-
ØD1	0.305	0.335	7.75	8.51	-
ØD2	0.110	0.160	2.79	4.06	-
e	0.200 BSC		5.08 BSC		-
e1	0.100 BSC		2.54 BSC		-
F	-	0.040	-	1.02	-
k	0.027	0.034	0.69	0.86	-
k1	0.027	0.045	0.69	1.14	2
L	0.500	0.750	12.70	19.05	1
L1	-	0.050	-	1.27	1
L2	0.250	-	6.35	-	1
Q	0.010	0.045	0.25	1.14	-
α	45° BSC		45° BSC		3
β	45° BSC		45° BSC		3
N	8		8		4

Rev. 0 5/18/94

**NOTES:**

1. (All leads) Øb applies between L1 and L2. Øb1 applies between L2 and 0.500 from the reference plane. Diameter is uncontrolled in L1 and beyond 0.500 from the reference plane.
2. Measured from maximum diameter of the product.
3. α is the basic spacing from the centerline of the tab to terminal 1 and β is the basic spacing of each lead or lead position (N - 1 places) from α, looking at the bottom of the package.
4. N is the maximum number of terminal positions.
5. Dimensioning and tolerancing per ANSI Y14.5M - 1982.
6. Controlling dimension: INCH.

All Intersil U.S. products are manufactured, assembled and tested utilizing ISO9000 quality systems.  
Intersil Corporation's quality certifications can be viewed at [www.intersil.com/design/quality](http://www.intersil.com/design/quality)

*Intersil products are sold by description only. Intersil Corporation reserves the right to make changes in circuit design, software and/or specifications at any time without notice. Accordingly, the reader is cautioned to verify that data sheets are current before placing orders. Information furnished by Intersil is believed to be accurate and reliable. However, no responsibility is assumed by Intersil or its subsidiaries for its use; nor for any infringements of patents or other rights of third parties which may result from its use. No license is granted by implication or otherwise under any patent or patent rights of Intersil or its subsidiaries.*

For information regarding Intersil Corporation and its products, see [www.intersil.com](http://www.intersil.com)