

---

# SH7718/08/02 (SH-3 Series)

## SuperH<sup>™</sup> RISC Processor Product Brief

# HITACHI

---

### Description

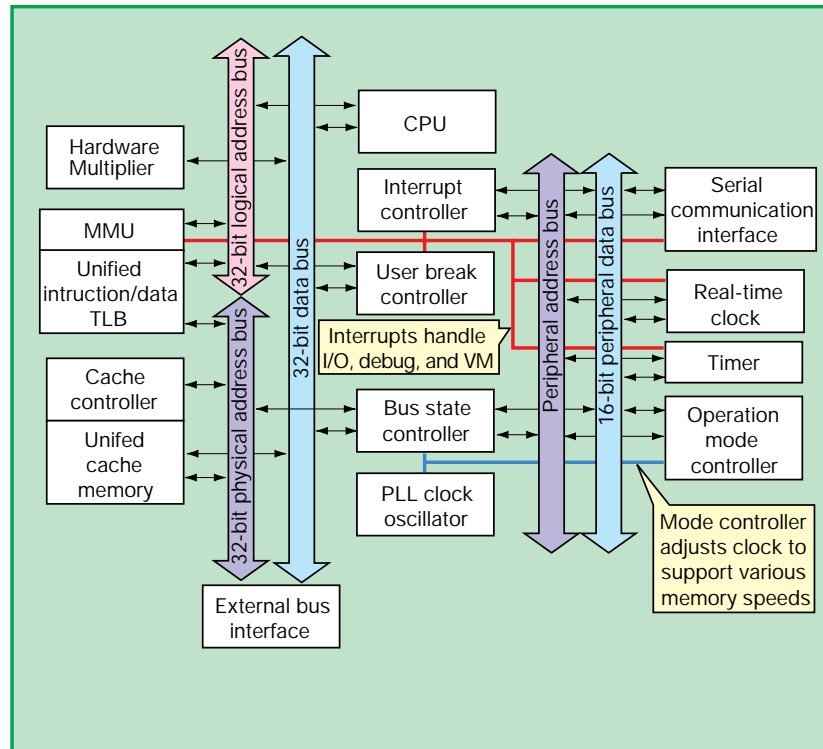
The SH7718/SH7708/SH7702 (SH-3 Series) are high performance, cost-effective, and highly integrated 32-bit RISC microprocessors for embedded applications. The SuperHTM architecture is the leader in code density among RISC microprocessors, reducing memory costs in embedded applications.

The SH-3 Series processors are used in consumer, data processing, industrial, and communication markets. Applications include handheld PCs, digital cameras, Internet appliances, security systems, hard disk drives, cellular phones, and protocol converters. The devices can be paired with a user-defined ASIC device to design a low cost, low IC count, and differentiated system.

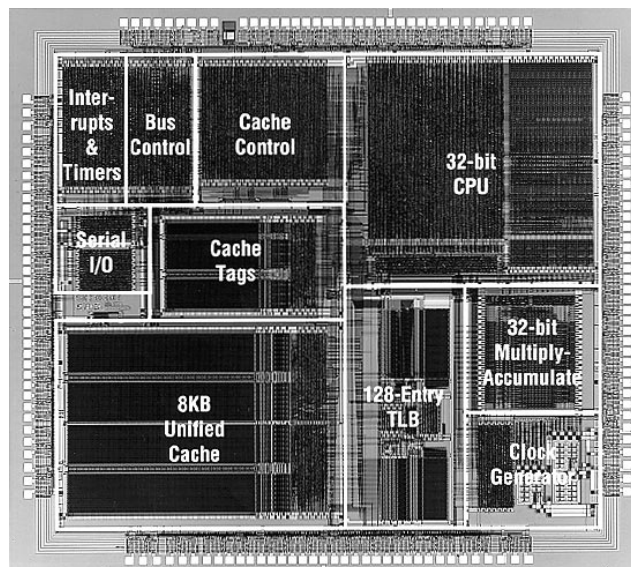
Hitachi optimized the SH7718/SH7708 MMU, cache size, and peripheral mix for Windows<sup>®</sup>CE applications. The SH7702 offers a reduced cache and package size for cost effective applications and other operating systems.

### Features

- General
  - 100 MHz/100 MIPS at 3.3 volts: SH7718/SH7708
  - 60 MHz/60 MIPS at 3.3 volts: SH7708
  - 45 MHz/45 MIPS at 3.3 volts: SH7702



SH-3 Architecture



Hitachi SH-3 32 bit RISC Processor

- 144 pin QFP (SH7718)
- 144 pin TQFP (SH7708)
- 120 pin TQFP (SH7702)
- CPU
  - Code compatible with SH7000/7600 series
  - 16 x 32-bit general purpose registers
  - 16-bit fixed instruction length for high code density
  - 32 x 32 --> 64 bits multiply-accumulate unit for special functions such as software modems
  - MMU Designed for Windows<sup>®</sup> CE 1KB, and 4KB page sizes, 128-entry, 4-way set associative TLB (SH7718/SH7708 only)
  - 5 stage pipeline
- FPU (SH7718 only)
  - Single precision
  - Single cycle FMAC
  - 200 MFLOPS
- Instruction set: 68 basic instruction types
- Memory
  - On-chip cache, unified instruction and data
    - 8KB: SH7718/SH7708
    - 2KB: SH7702
    - Write back or write through, LRU cache
    - Low voltage cache to reduce power consumption
  - On-chip bus state controller allows direct connection to DRAM, SDRAM, SRAM, ROM, and Flash ROM
    - 8, 16, or 32-bit data bus support (SH7718/SH7708)
    - 8 and 16-bit data bus support (SH7702)
- Peripherals
  - Timers, 3chx32-bits
  - Watchdog timer
  - Realtime clock
  - PCMCIA control logic
  - Serial communications interface, 1ch (asynchronous/synchronous, with smart card interface)
  - PLL with x1, x2, (x3 SH7718/SH7708 100 MHz only), x4, external clock capability
  - Interrupt controller
- General purpose I/O, 8 lines (SH7708-60 only)
- Dynamic power control
  - Low power modes: sleep and standby
  - Peripheral turn off capability
  - User break controller for on-chip debugging

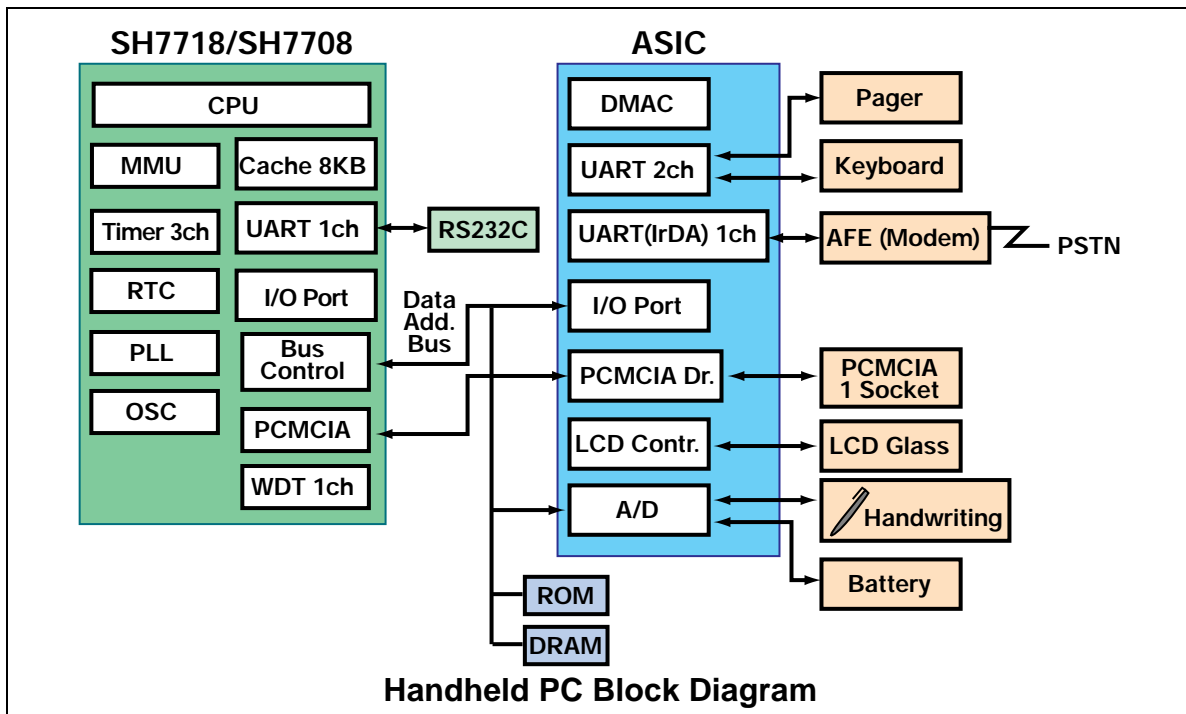
---

## SH7718/08/02 (SH-3 Series)

---

### Support

- Hardware:
  - Hitachi E7000 emulator and POD
  - Hitachi low cost evaluation board
  - Hitachi D9000 development platform for SH7708 and Windows™CE
  - Third party emulators - Hewlett-Packard, Orion
- Software:
  - Hitachi:
    - C, C++ compiler, assembler, simulator/debugger
  - Third parties:
    - C, C++ compiler, assembler, simulator/debugger, Cygnus Support (gnu), Green Hills Software, Microsoft™ VC++ for Windows CE
    - Task and timing simulation - CARDtools™ Systems
- Operating Systems:  
Geoworks, Hitachi OS, Java, LINUX, Nucleus+, OS-9, pSOS, VxWorks, Windows™CE



### Middleware

- V.34 (up to 56 Kbps) Data/FAX software modem
- Voice recognition
- Voice compression
- Handwriting recognition
- JPEG video compression
- Image compression for FAX: MH, MR, MMR

## Contacts

### Sales & Marketing Headquarters

Hitachi Semiconductor (America) Inc.  
2000 Sierra Point Parkway  
Brisbane, CA 94005  
Literature Requests:  
1-800-285-1601  
[www.hitachi.com/se](http://www.hitachi.com/se)  
micronductor

### Western

Hitachi Semiconductor (America) Inc.  
1740 Technology Dr.  
Suite 500  
San Jose, CA 95110  
(408) 451-9570

### Central

Hitachi Semiconductor (America) Inc.  
Two Lincoln Centre  
5420 LBJ Freeway  
Suite 1446  
Dallas, TX 75240  
(214) 991-4510

### Eastern

Hitachi Semiconductor (America) Inc.  
25 Mall Road  
Burlington, MA 01803  
(617) 229-2150

### Southwest

Hitachi Semiconductor (America) Inc.  
2030 Main Street  
Suite 450  
Irvine, CA 92714  
(714) 553-8500

### Mountain Pacific

Hitachi Semiconductor (America) Inc.  
4600 S. Ulster Street  
Suite 690  
Denver, CO 80237  
(303) 779-5535

### Bloomington

Hitachi Semiconductor (America) Inc.  
3800 W. 80th Street,  
Suite 1550  
Bloomington, MN 55431  
(612) 896-3444

### Great Lakes

Hitachi Semiconductor (America) Inc.  
Fairlane Plaza  
North, Suite 311  
290 Town Center Drive  
Dearborn, MI 48126  
(313) 271-4410

### North Central

Hitachi Semiconductor (America) Inc.  
500 Park Boulevard  
Suite 415  
Itasca, IL 60143  
(708) 773-4864

### South Central

Hitachi Semiconductor (America) Inc.  
One Westchase Center  
10777 Westheimer Dr.  
Suite 1040  
Houston, TX 77042  
(713) 974-0534

### IBM Engineering

Hitachi Semiconductor (America) Inc.  
6907 Capitol of Texas Hwy  
Suite 210  
Austin, TX 78731  
(512) 418-9360

### South Eastern/IBM Labs

Hitachi Semiconductor (America) Inc.  
5511 Capitol Center Dr.  
Suite 204  
Raleigh, NC 27606  
(919) 233-0800

### Mid-Atlantic

Hitachi Semiconductor (America) Inc.  
325 Columbia Turnpike  
Suite 203  
Florham Park, NJ 07932  
(201) 514-2100

### Southeast

Hitachi Semiconductor (America) Inc.  
4901 N.W. 17<sup>th</sup> Way  
Suite 302  
Ft. Lauderdale, FL 33309  
(305) 491-6154

### IBM

Hitachi Semiconductor (America) Inc.  
21 Old Main Street  
Suite 206  
Fishkill, NY 12524  
(914) 897-3000

### Ottawa

Hitachi (Canadian), Ltd.  
320 March Road  
Suite 602  
Kanata, Ontario,  
Canada K2K2E3  
(613) 591-1990

### Toronto

Hitachi (Canadian), Ltd.  
6740 Campobello Road  
Mississauga, Ontario  
Canada L5N 2L8  
(416) 826-4100

### Calgary

Hitachi (Canadian), Ltd.  
10655 Southport Road S.W.,  
Suite 460  
Calgary, Alberta  
Canada T2W4Y1  
(403) 278-1881