

B Series

General Purpose RFI Power Line Filters
General Purpose for High Impedance
Loads at Low Cost

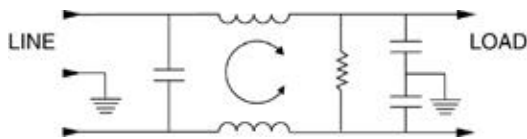


UL Recognized
CSA Certified
VDE Approved

B Series

The B series RFI power line filters are general purpose common-mode filters effectively providing RFI control of line-to-ground noise in a small size at low cost. These filters are designed to meet a wide variety of electronic and electrical applications and are available in a broad selection of current ratings and termination styles. The EB models meet the very low leakage current requirements of VDE portable equipment, and (120 Volt) UL544 nonpatient medical equipment.

Electrical Schematic



Resistor location for reference only.



Specifications

Maximum leakage current, each line-to-ground

@ 120 VAC 60 Hz:
 @ 250 VAC 50 Hz:

VB Models	EB Models
.4 mA	.21 mA
.7 mA	.36 mA

Hipot rating (one minute):

line-to-ground 2250 VDC
 line-to-line 1450 VDC

Operating frequency:

50/60 Hz

Rated voltage:

120/250 VAC

Rated current:

	@ 120 VAC	@ 250 VAC
1VB/1EB	1A	1A
2VB/2EB	2A	2A
3VB/3EB	3A	3A
5VB/5EB	5A	5A
10VB/10EB	10A	8A
10VB6	10A	8A
20VB/20EB	20A	16A
30VB6	30A	25A

Minimum insertion loss in dB:

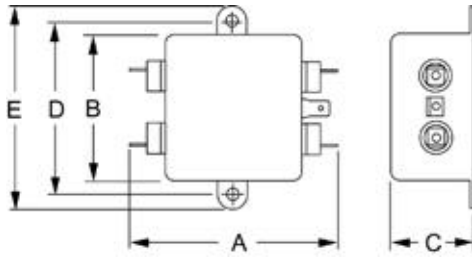
Line-to-ground in 50 ohm circuit

Current Rating	Frequency-MHz					
	.15	.5	1	5	10	30
VB Models						
1A, 3A	15	30	38	50	50	50
2A, 5A, 10A, 20A, 30A	7	20	25	40	45	48
EB Models						
1A, 3A	15	29	35	45	45	48
2A, 5A, 10A, 20A	7	19	23	34	37	42

Case Styles

Metric shown in italics.

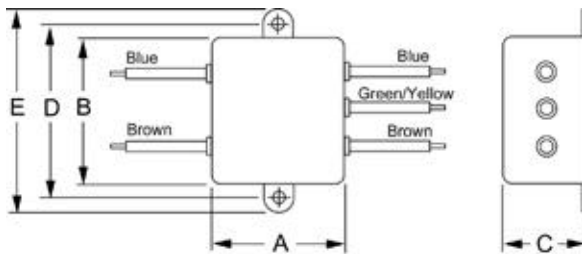
B1



Typical dimensions

Terminals: $\frac{.250}{6.35}$ (9) Holes: $\frac{.07}{1.8}$ Dia.(8) Slot: $\frac{.07 \times .16}{1.8 \times 4.1}$ Mounting holes: $\frac{.188}{4.78}$ Dia.(2)

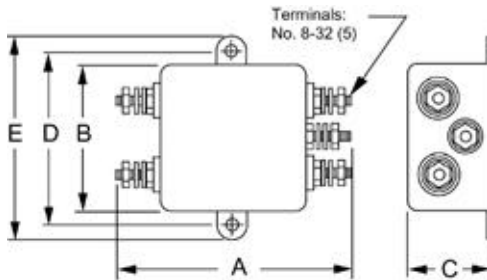
B3



Typical dimensions

Wire leads: $\frac{.40}{101.6}$ Min. Mounting holes: $\frac{.188}{4.78}$ Dia. (2)

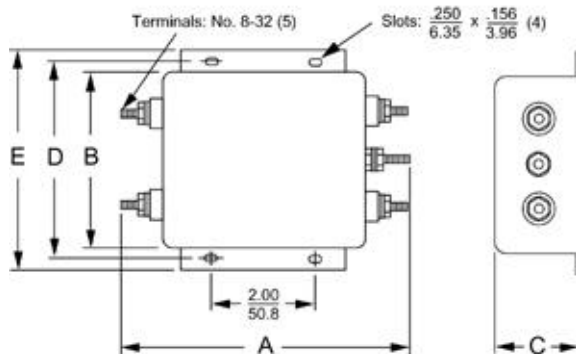
10VB6 & 20VB6



Typical dimensions

Mounting holes: $\frac{.188}{4.78}$ Dia. (2) Torque 18± 2 in.lb.

30VB6



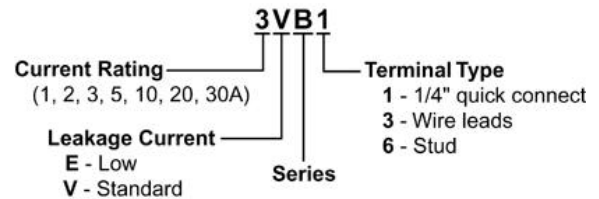
Case Dimensions

Metric shown in italics.

Part No.	A (max)	B (max)	C (max)	D $\pm .015$ $\pm .38$	E (max)
1VB1, 1EB1	2.25	1.82	0.66	2.125	2.53
2VB1, 2EB1	57.2	46.2	16.8	53.98	64.3
1VB3, 1EB3	0.96	1.82	0.66	2.125	2.53
2VB3, 2EB3	24.4	46.2	16.8	53.98	64.3
3VB1, 3EB1	2.61	1.82	0.78	2.125	2.53
5VB1, 5EB1	66.3	46.2	19.8	53.98	64.3
3VB3, 3EB3	1.32	1.82	0.78	2.125	2.53
5VB3, 5EB3	33.5	46.2	19.8	53.98	64.3
10VB1, 10EB1	2.61	1.82	1.16	2.125	2.53
	66.3	46.2	29.5	53.98	64.3
10VB3, 10EB3	1.32	1.82	1.16	2.125	2.53
	33.5	46.2	29.5	53.98	64.3
10VB6	2.72	1.82	1.16	2.125	2.53
	69.1	46.2	29.5	53.98	64.3
20VB1, 20EB1	3.36	2.07	1.16	2.375	2.81
	85.3	52.6	29.5	60.33	71.4
20VB6	3.46	2.07	1.16	2.375	2.81
	87.9	52.6	29.5	60.33	71.4
30VB6	5.34	3.38	1.53	3.750	4.2
	135.6	85.9	38.9	95.3	106.7

Ordering Information

Consult your local Corcom sales representative for pricing.



Available Part Numbers

1VB1	5VB3	1EB1	5EB3
1VB3	10VB1	1EB3	10EB1
2VB1	10VB3	2EB1	10EB3
2VB3	10VB6	2EB3	20EB1
3VB1	20VB1	3EB1	
3VB3	20VB6	3EB3	
5VB1	30VB6	5EB1	