

EAS, EBS Series

**Snap-in
Compact RFI Filter
IEC Connector Package**



**UL Recognized
CSA Certified
VDE Approved**

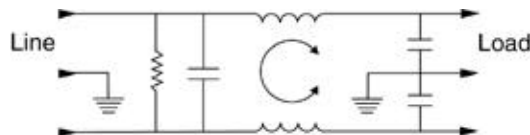
EAS Series

This filter offers the performance characteristics of the EEA susceptibility filter with the additional advantage of a snap-in panel mount. The EAS series supersedes the EF series by providing superior performance, particularly in the common mode at low frequencies.

EBS Series

This filter offers the performance characteristics of the EEB susceptibility filter with the additional advantage of a snap-in panel mount. The EBS provides enhanced differential mode performance compared to both the EAS and EF series.

Electrical Schematic



Resistor location for reference only.



Specifications

Maximum leakage current, each		
line-to-ground	@ 120 VAC 60 Hz:	.22mA
	@ 250 VAC 50 Hz:	.38mA
Hipot rating (one minute):		
line-to-ground		1500 VAC
line-to-line		1450 VDC
Operating frequency:		50/60 Hz
Rated voltage:		120/250 VAC

Minimum insertion loss in dB:

EAS

Line-to-ground in 50 ohm circuit

Current Rating	Frequency-MHz								
	.01	.05	.1	.15	.5	1	5	10	30
1A	12	23	29	32	41	47	47	47	40
3A	-	10	15	19	30	36	48	50	47
6A	-	1	4	10	22	28	42	48	47
10A	-	1	3	5	14	20	32	38	47
15A	-	-	-	1	5	8	20	26	40

Line-to-line in 50 ohm circuit

Current Rating	Frequency-MHz						
	.5	1	1.5	3	5	10	30
1A	1	9	19	32	42	45	40
3A	2	4	6	20	35	45	40
6A	2	4	6	6	24	40	40
10A	1	4	5	5	5	30	40
15A	1	4	6	12	14	15	40

EBS

Line-to-ground in 50 ohm circuit

Current Rating	Frequency-MHz								
	.01	.05	.1	.15	.5	1	5	10	30
1A	12	23	29	32	41	47	47	47	40
3A	-	10	14	18	30	36	48	50	47
6A	-	1	4	10	22	28	42	48	47
10A	-	1	3	5	14	20	32	38	47
15A	-	-	-	1	5	8	20	26	40

Line-to-line in 50 ohm circuit

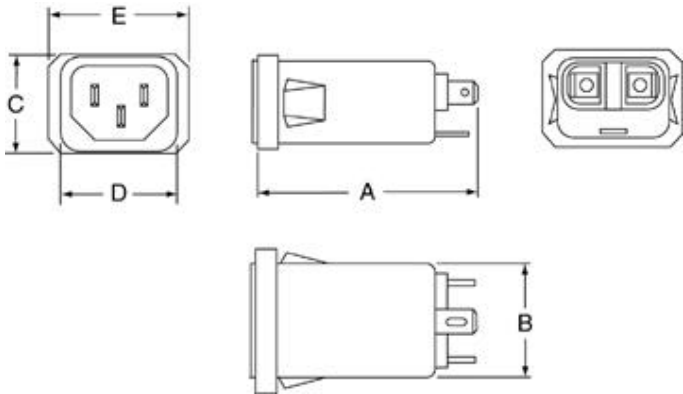
Current Rating	Frequency-MHz						
	.01	.15	.5	1	3	5	10
1A	1	3	14	23	41	47	50
3A	1	2	11	14	25	38	44
6A	1	2	10	14	20	33	42
10A	1	2	10	16	19	19	39
15A	-	2	10	16	24	28	28

Series EAS, EBS

Case Style

Metric shown in italics.

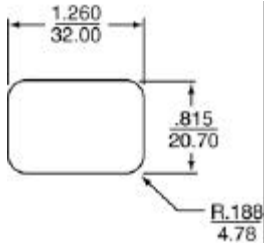
EAS1/EBS1



Typical dimensions

Terminals: $\frac{.25}{6.35}$ (3) Holes: $\frac{.07}{1.8}$ Dia. (2) Slots: $\frac{.07 \times .16}{1.8 \times 4.1}$

Recommended Panel Cutout



Front Mount Only
Panel Thickness .031" - .047"
(.78 mm - 1.19 mm)

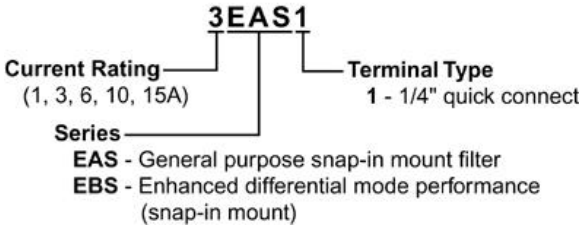
Case Dimensions

Metric shown in italics.

Part No.	A (max)	B (max)	C (max)	D $\pm .010$ $\pm .25$	E (max)
EAS1	$\frac{2.2}{55.88}$	$\frac{1.15}{29.2}$	$\frac{.9}{22.86}$	$\frac{1.185}{30.1}$	$\frac{1.35}{34.21}$
EBS1	$\frac{2.2}{55.88}$	$\frac{1.15}{29.2}$	$\frac{.9}{22.86}$	$\frac{1.185}{30.1}$	$\frac{1.35}{34.21}$

Ordering Information

Consult your local Corcom sales representative for pricing.



Available Part Numbers

1EAS1	1EBS1
3EAS1	3EBS1
6EAS1	6EBS1
10EAS1	10EBS1
15EAS1	15EBS1

Accessory Line Cord No. GA400

7 1/2 foot, 3 conductor line cord to mate with filter IEC input connector. 1250 watt, 10A-125 VAC, black SVT cord, UL listed, CSA certified

Accessory Insulating Boot No. FA601

Plastic shroud to cover terminals on back of filter (style 1 terminals only)