

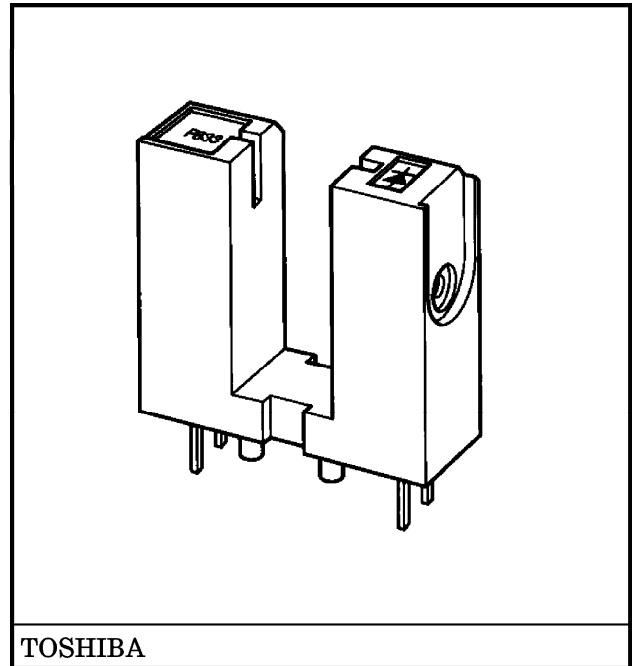
TOSHIBA PHOTO-INTERRUPTER INFRARED LED + PHOTOTRANSISTOR

TLP833

COPIERS, PRINTERS, FAX MACHINES
 VCERS, MICROWAVE OVENS, AIR CONDITIONERS
 AUTOMATIC VENDING MACHINES, BANK ATMS
 VARIOUS POSITION DETECTION SENSORS

The TLP833 is a photo-interrupter which incorporates a high radiant power GaAs LED and a fast-response Si photo-transistor. The package has a deep gap.

- Package with deep gap (gap : 12 mm)
- Designed for direct mounting on printed circuit boards (positioning pins included).
- Gap : 5 mm
- Resolution : Slit width = 0.5 mm
- High current transfer ratio : $I_C / I_F = 5\%$ (min)
- High temperature operation : $T_{opr} = 95^\circ\text{C}$ (max)
- Package material : Polybutylene terephthalate (UL94-V-0)
- Detector impermeable to visible light

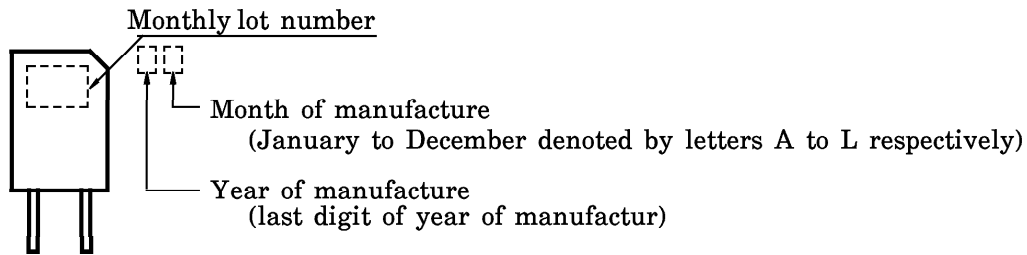


Weight : 1 g (typ.)

MAXIMUM RATINGS (Ta = 25°C)

CHARACTERISTIC		SYMBOL	RATING	UNIT
LED	Forward Current	I_F	50	mA
	Forward Current	$\Delta I_F / ^\circ\text{C}$	-0.33	mA / °C
	Derating		-2	
	Reverse Voltage	V_R	5	V
DETECTOR	Collector-Emitter Voltage	V_{CEO}	35	V
	Emitter-Collector Voltage	V_{ECO}	5	V
	Collector Power Dissipation	P_C	75	mW
	Collector Power Dissipation Derating (Ta > 25°C)	$\Delta P_C / ^\circ\text{C}$	-1	mW / °C
Collector Current		I_C	50	mA
Operating Temperature Range		T_{opr}	-30~85	°C
Storage Temperature Range		T_{stg}	40~100	°C
Soldering Temperature (5s)		T_{sol}	260	°C

MARKINGS



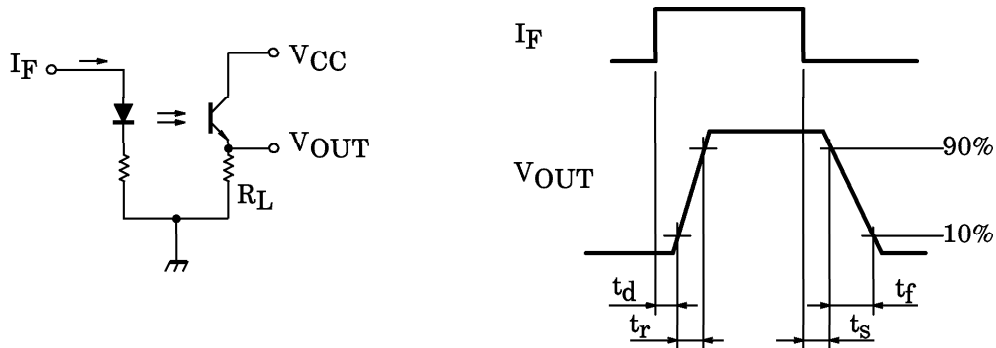
RECOMMENDED OPERATING CONDITIONS

CHARACTERISTIC	SYMBOL	Min	Typ.	Max	UNIT
Supply Voltage	V_{CC}	—	5	24	V
Forward Current	I_F	—	—	25	mA
Operating Temperature	T_{opr}	-10	—	75	°C

OPTICAL AND ELECTRICAL CHARACTERISTICS ($T_a = 25^\circ\text{C}$)

CHARACTERISTIC		SYMBOL	TEST CONDITION	Min	Typ.	Max	UNIT
LED	Forward Voltage	V_F	$I_F = 10\text{ mA}$	1.00	1.15	1.30	V
	Reverse Current	I_R	$V_R = 5\text{ V}$	—	—	10	μA
	Peak Emission Wavelength	λ_P	$I_F = 10\text{ mA}$	—	940	—	nm
DETECTOR	Dark Current	$I_D (I_{CEO})$	$V_{CE} = 24\text{ V}, I_F = 0$	—	—	0.1	μA
	Peak Sensitivity Wavelength	λ_P	—	—	870	—	nm
COUPLED	Current Transfer Ratio	I_C / I_F	$V_{CE} = 2\text{ V}, I_F = 10\text{ mA}$	5	—	100	%
	Collector-Emitter Saturation Voltage	$V_{CE}(\text{sat})$	$I_F = 20\text{ mA}, I_C = 0.5\text{ mA}$	—	0.1	0.35	V
	Rise Time	t_r	$V_{CC} = 5\text{ V}, I_C = 1\text{ mA}, R_L = 1\text{ k}\Omega$ (Note)	—	15	—	μs
	Fall Time	t_f		—	15	—	

(Note) : Switching time measurement circuit and waveform



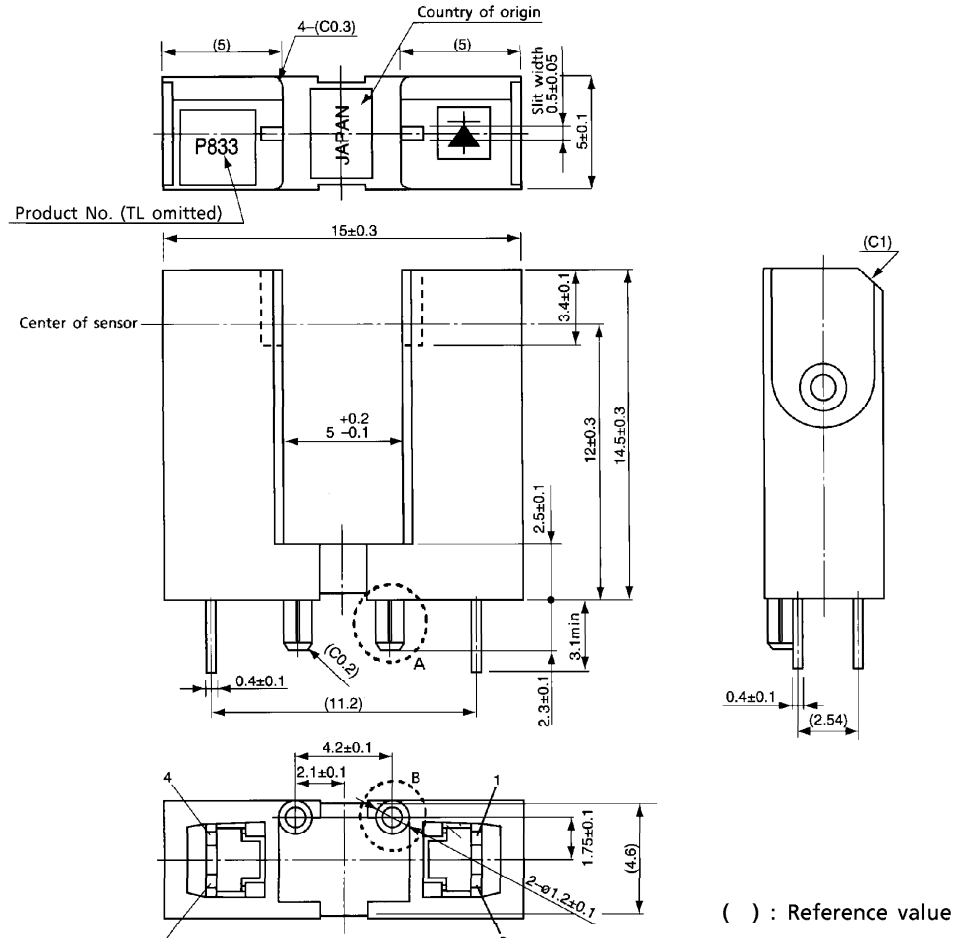
PRECAUTIONS

1. Clean only the soldered part of the leads. Do not immerse the entire package in the cleaning solvent.
2. The package is made of polybutylene-terephthalate. Oil or chemicals may cause the package to melt or crack. Care must be taken in relation to the environment in which the device is to be installed.
3. Mount the device on a level surface.
4. Keep the device away from external light. Although the phototransistor is of low optical sensitivity, the device may malfunction if external light with a wavelength of 700 nm or more is allowed to impinge on it.
5. Conversion efficiency falls over time due to the current which flows in the infrared LED. When designing a circuit, take into account this change in conversion efficiency over time. The ratio of fluctuation in conversion efficiency to fluctuation in infrared LED optical output is 1:1.

$$\frac{I_C/I_F(t)}{I_C/I_F(0)} = \frac{P_O(t)}{P_O(0)}$$

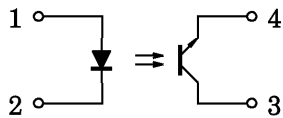
PACKAGE DIMENSIONS

Unit : mm

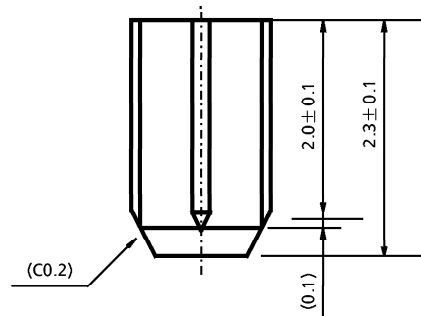


Weight : 1 g (typ.)

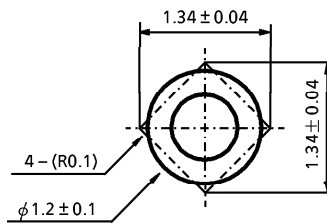
PIN CONNECTION

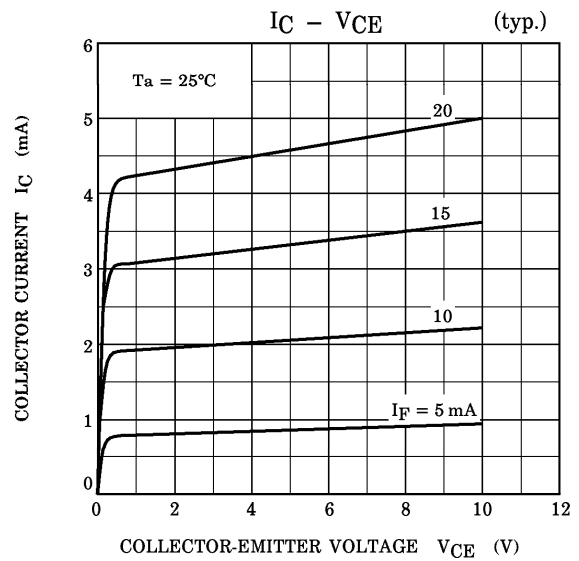
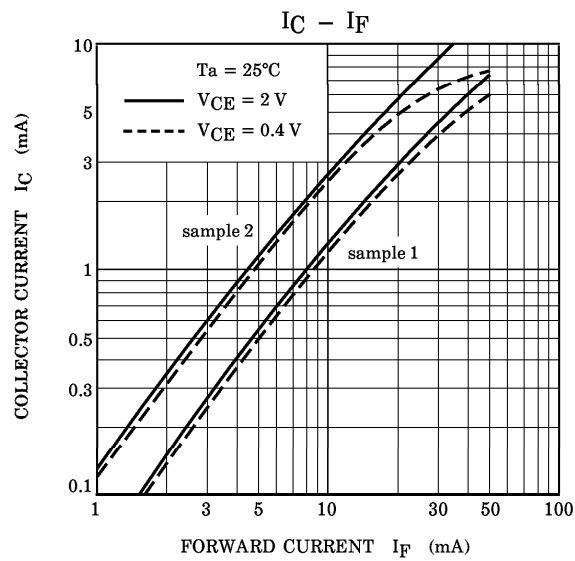
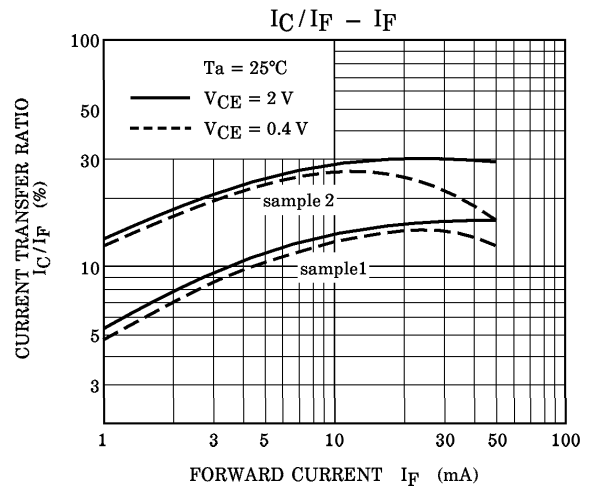
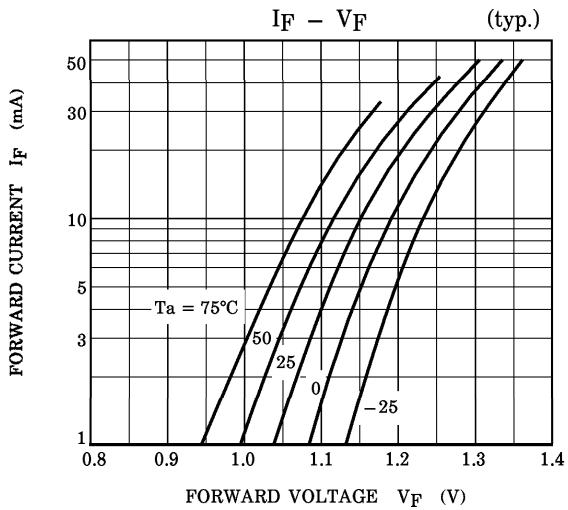
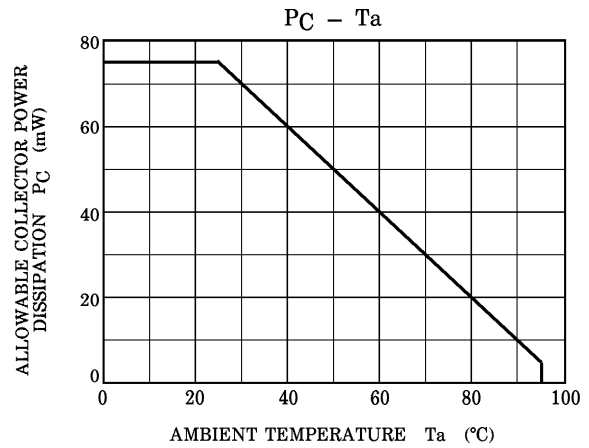
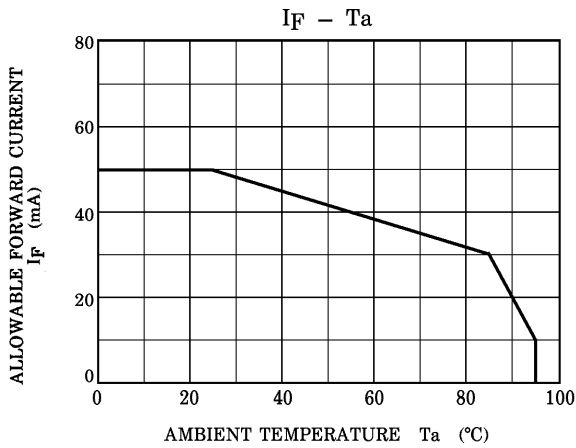


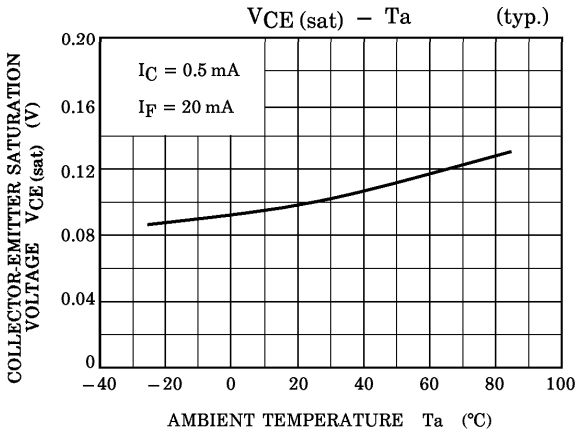
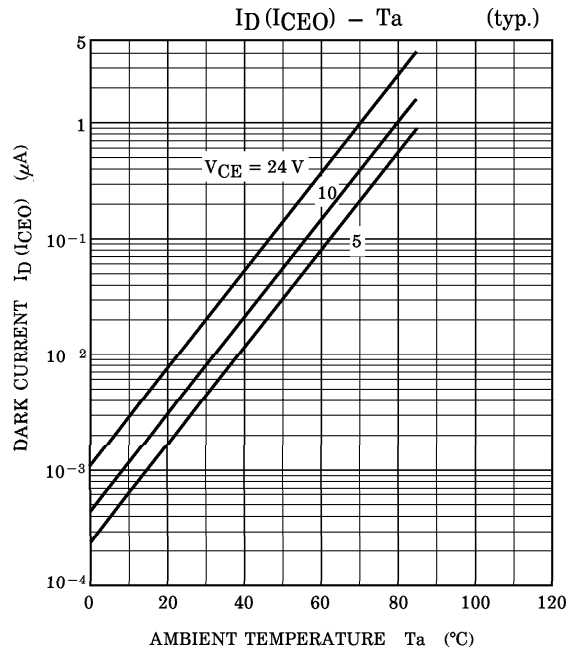
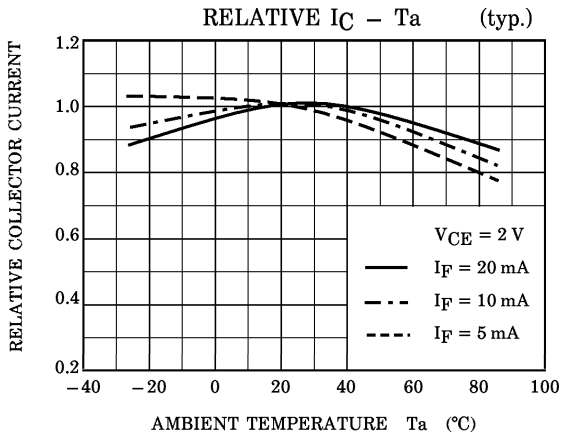
- 1. Anode
- 2. Cathode
- 3. Collector
- 4. Emitter



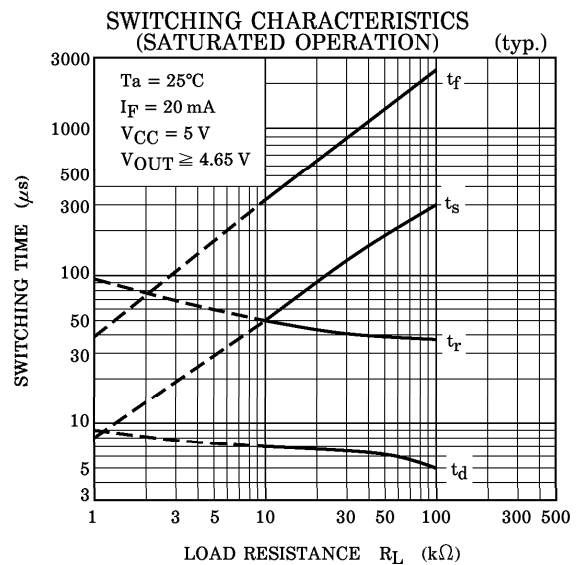
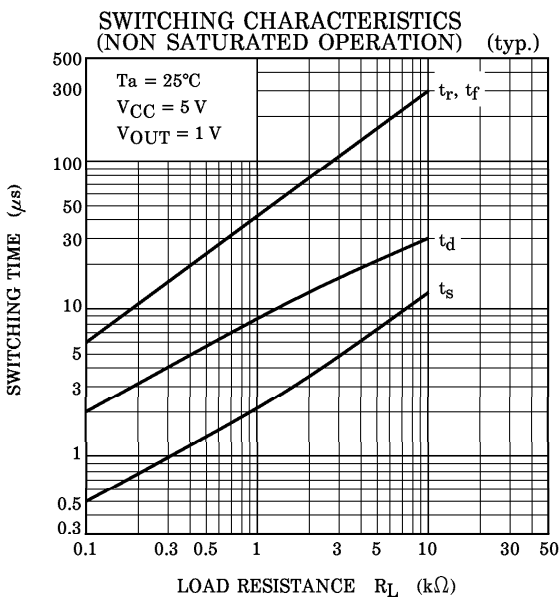
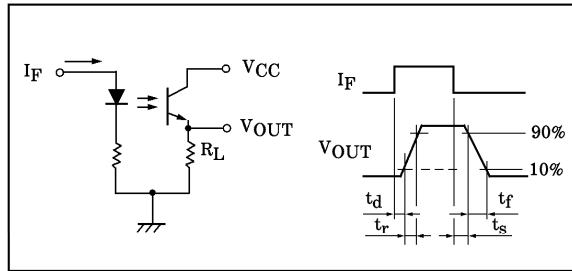
B

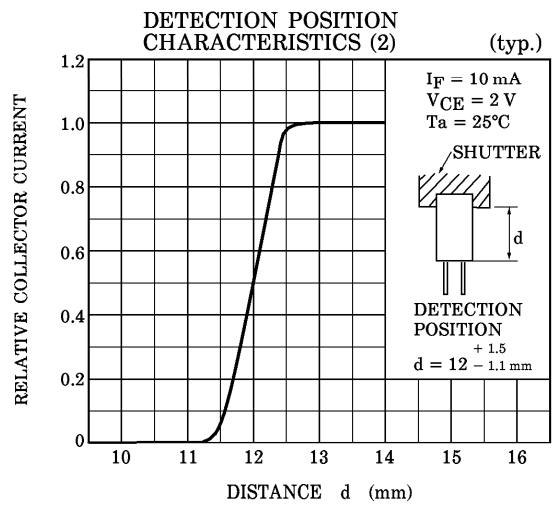
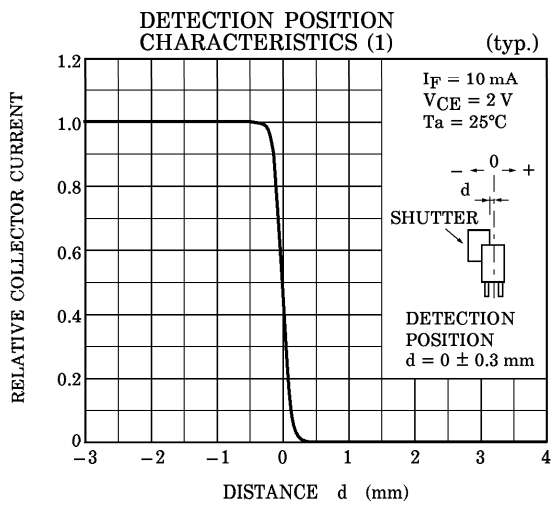






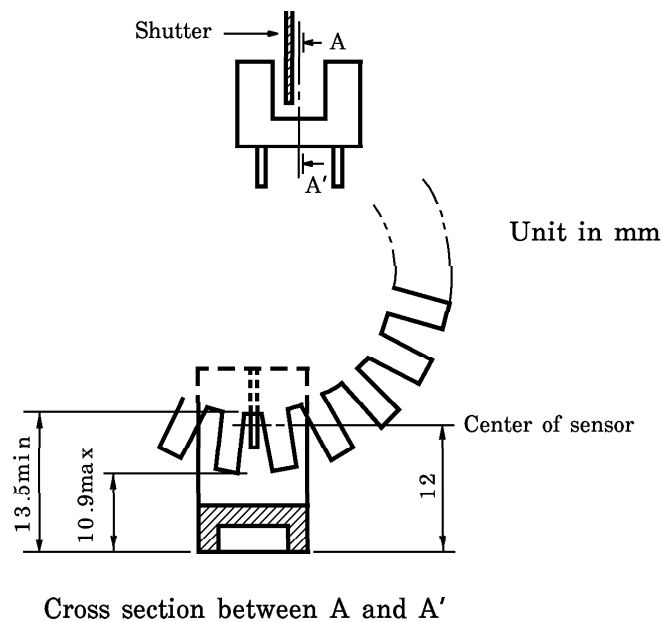
SWITCHING TIME TEST CIRCUIT





RELATIVE POSITIONING OF SHUTTER AND DEVICE

For normal operation position the shutter and the device as shown in the figure below. By considering the device's detection direction characteristic and switching time, determine the shutter slit width and pitch.



RESTRICTIONS ON PRODUCT USE

000707EAC

- TOSHIBA is continually working to improve the quality and reliability of its products. Nevertheless, semiconductor devices in general can malfunction or fail due to their inherent electrical sensitivity and vulnerability to physical stress. It is the responsibility of the buyer, when utilizing TOSHIBA products, to comply with the standards of safety in making a safe design for the entire system, and to avoid situations in which a malfunction or failure of such TOSHIBA products could cause loss of human life, bodily injury or damage to property. In developing your designs, please ensure that TOSHIBA products are used within specified operating ranges as set forth in the most recent TOSHIBA products specifications. Also, please keep in mind the precautions and conditions set forth in the "Handling Guide for Semiconductor Devices," or "TOSHIBA Semiconductor Reliability Handbook" etc..
- The TOSHIBA products listed in this document are intended for usage in general electronics applications (computer, personal equipment, office equipment, measuring equipment, industrial robotics, domestic appliances, etc.). These TOSHIBA products are neither intended nor warranted for usage in equipment that requires extraordinarily high quality and/or reliability or a malfunction or failure of which may cause loss of human life or bodily injury ("Unintended Usage"). Unintended Usage include atomic energy control instruments, airplane or spaceship instruments, transportation instruments, traffic signal instruments, combustion control instruments, medical instruments, all types of safety devices, etc.. Unintended Usage of TOSHIBA products listed in this document shall be made at the customer's own risk.
- Gallium arsenide (GaAs) is a substance used in the products described in this document. GaAs dust and fumes are toxic. Do not break, cut or pulverize the product, or use chemicals to dissolve them. When disposing of the products, follow the appropriate regulations. Do not dispose of the products with other industrial waste or with domestic garbage.
- The information contained herein is presented only as a guide for the applications of our products. No responsibility is assumed by TOSHIBA CORPORATION for any infringements of intellectual property or other rights of the third parties which may result from its use. No license is granted by implication or otherwise under any intellectual property or other rights of TOSHIBA CORPORATION or others.
- The information contained herein is subject to change without notice.