

RECTIFIER STACK (CENTER TAP)

1J2C1 600V 2A

MAXIMUM RATINGS

| CHARACTERISTIC | | SYMBOL | RATING | UNIT |
|--------------------------------------|--------------|------------------|----------|------|
| Repetitive Peak Reverse Voltage | 1B2C1, 1B2Z1 | V _{RRM} | 100 | V |
| | 1D2C1, 1D2Z1 | | 200 | |
| | 1G2C1, 1G2Z1 | | 400 | |
| | 1J2C1, 1J2Z1 | | 600 | |
| Average Output Rectified Current | | I _o | 2.0 | A |
| Peak One Cycle Surge Forward Current | | I _{FSM} | 60(50Hz) | A |
| Junction Temperature | | T _j | -40~150 | °C |
| Storage Temperature Range | | T _{stg} | -40~150 | °C |

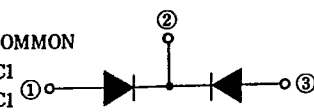
ELECTRICAL CHARACTERISTICS

| CHARACTERISTIC | SYMBOL | CONDITION | MIN. | TYP. | MAX. | UNIT |
|---------------------------------|------------------|------------------------------------------------|------|------|------|------|
| Peak Forward Voltage | V _{FM} | I _{FM} =2.0A, T _a =25°C | - | - | 1.2 | V |
| Repetitive Peak Reverse Current | I _{RRM} | V _{RRM} =Rated, T _j =150°C | - | - | 0.4 | mA |

POLARITY

1. CATHODE COMMON

1B2C1 1G2C1
1D2C1 1J2C1



2. ANODE COMMON

1B2Z1 1G2Z1
1D2Z1 1J2Z1

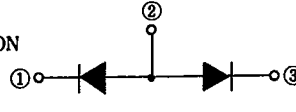
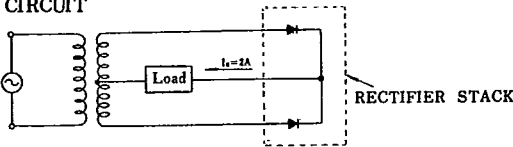
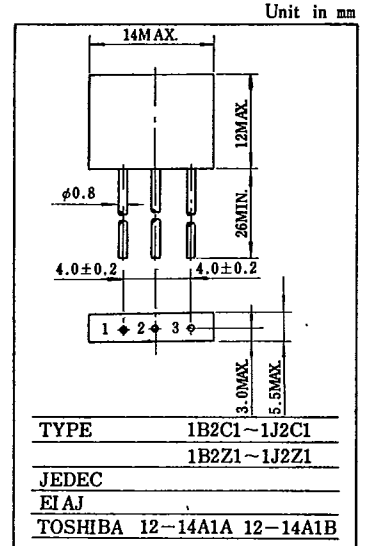


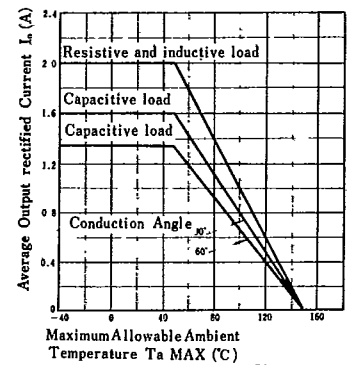
Fig.1 NORMAL CIRCUIT



- Notes : 1. Soldering : 6 mm is the minimum to be kept between case and soldering part.
2. Lead Bending : 6 mm is the minimum to be kept from the case when bend the lead wire.



I_o - T_a MAX



4J2C41 600V 4A

MAXIMUM RATINGS

| CHARACTERISTIC | | SYMBOL | RATING | Unit |
|------------------------------------------------------------------------------|----------------|------------------|-----------|------|
| Repetitive Peak Reverse Voltage | 4B2C41, 4B2Z41 | V _{RRM} | 100 | V |
| | 4D2C41, 4D2Z41 | | 200 | |
| | 4G2C41, 4G2Z41 | | 400 | |
| | 4J2C41, 4J2Z41 | | 600 | |
| Average Output Rectified Current | | I _o | 4 | A |
| Peak One Cycle Surge Forward Current (Non-Repetitive) (T _a =25°C) | | I _{FSM} | 250(50Hz) | A |
| Junction Temperature | | T _j | -20~150 | °C |
| Storage Temperature Range | | T _{stg} | -20~140 | °C |

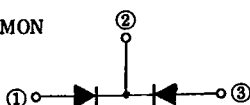
ELECTRICAL CHARACTERISTICS

| CHARACTERISTIC | SYMBOL | CONDITION | MIN. | TYP. | MAX. | UNIT |
|---------------------------------|------------------|-----------------------------------------------|------|------|------|------|
| Peak Forward Voltage | V _{FM} | I _{FM} =22A T _a =25°C | - | - | 1.2 | V |
| Repetitive Peak Reverse Current | I _{RRM} | V _{RRM} =Rated T _j =150°C | - | - | 2.0 | mA |

POLARITY

1. CATHODE COMMON

4B2C41 4G2C41
4D2C41 4J2C41



2. ANODE COMMON

4B2Z41 4G2Z41
4D2Z41 4J2Z41

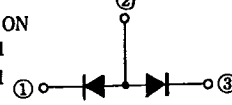
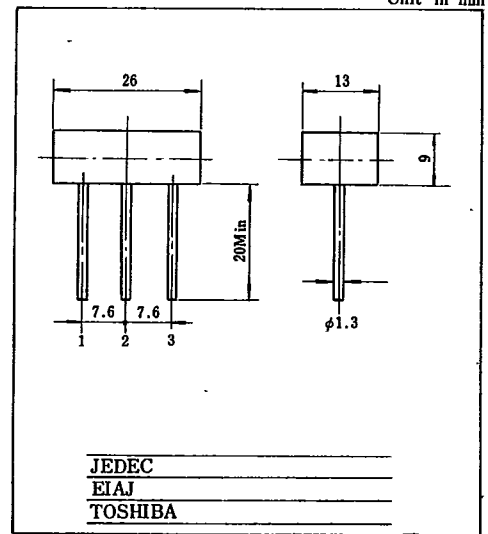
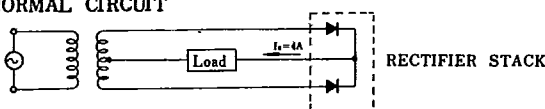
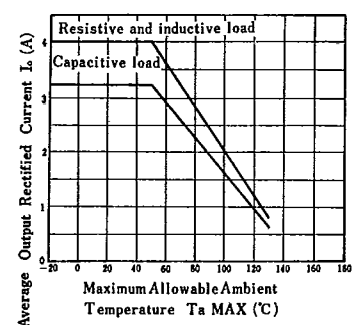


Fig.1 NORMAL CIRCUIT



I_o - T_a MAX



- Notes : 1. Soldering : 6 mm is the minimum to be kept between case and soldering part.
2. Lead Bending : 6 mm is the minimum to be kept from the case when bend the lead wire.

STACKS