

TOSHIBA InGaAlP LED

TLOE50C(F)

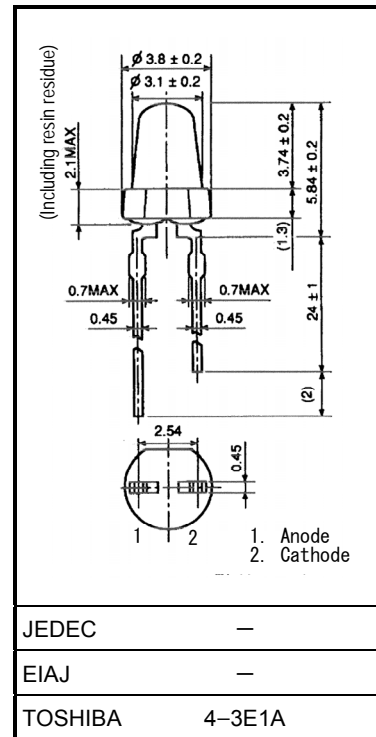
Unit: mm

○ Panel Circuit Indicator

- Lead(Pb)-free products (lead: Sn-Ag-Cu)
- $\Phi 3.1$ mm wide viewing angle
- InGaAlP
- Emitted color: Orange
- Colored, Transparent lens
- Applications: Various types of information panels, indicators for amusement equipment and panel backlighting illumination sources.

Maximum Ratings (Ta = 25°C)

CHARACTERISTICS	SYMBOL	RATING	UNIT
FORWARD CURRENT	I_F	50	mA
REVERSE VOLTAGE	V_R	4	V
POWER DISSIPATION	P_D	120	mW
OPERATING TEMPERATURE	T_{opr}	-40~100	°C
STORAGE TEMPERATURE	T_{stg}	-40~120	°C



Weight: 0.14 g

ELECTRICAL AND OPTICAL CHARACTERISTICS (Ta = 25°C)

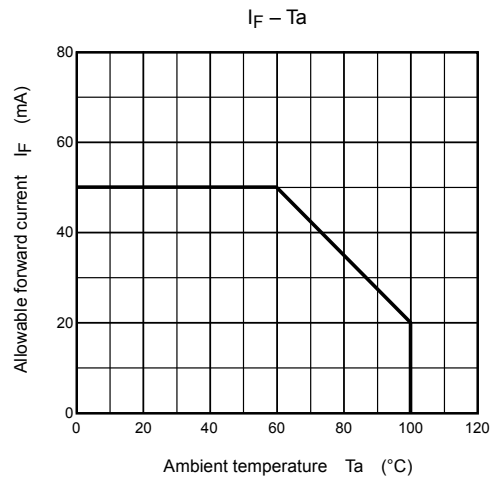
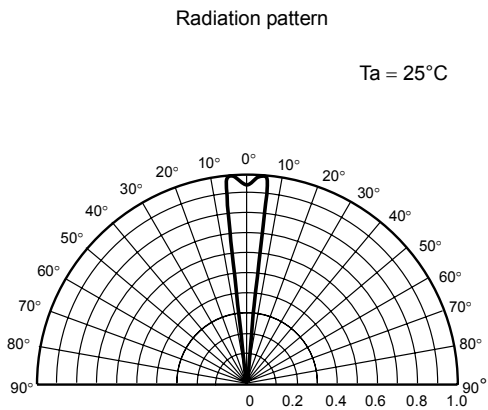
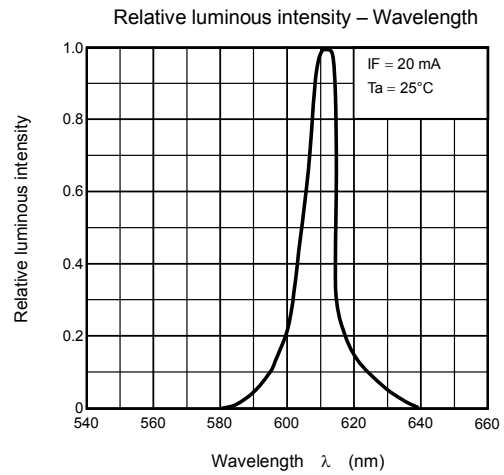
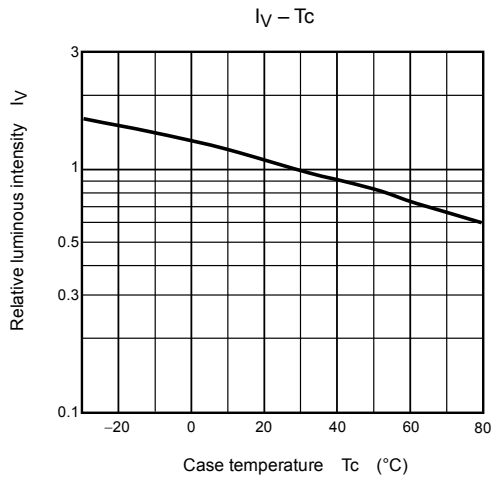
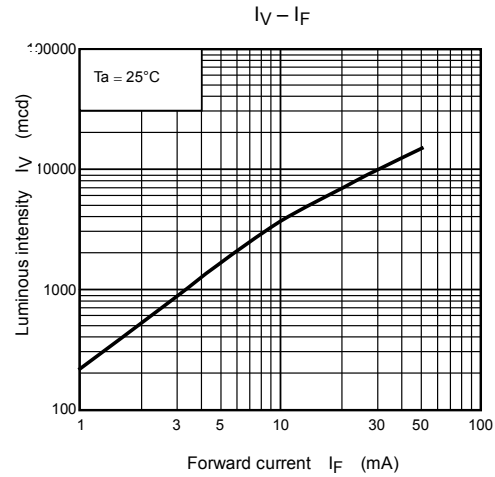
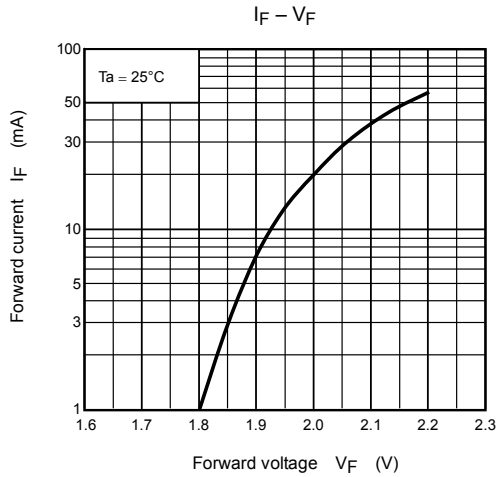
CHARACTERISTICS	SYMBOL	TEST CONDITION	MIN	TYP	MAX	UNIT
FORWARD VOLTAGE	V_F	$I_F=20\text{mA}$	—	2.0	2.4	V
REVERSE CURRENT	I_R	$V_R=4\text{V}$	—	—	50	μA
LUMINOUS INTENSITY	I_v	$I_F=20\text{mA}(\text{Note})$	1530	7000	—	mcd
PEAK WAVELENGTH	λ_p	$I_F=20\text{mA}$	—	(612)	—	nm
SPECTRAL LINE HALF WIDTH	$\Delta \lambda$	$I_F=20\text{mA}$	—	20	—	nm
DOMINANT WAVELENGTH	λ_d	$I_F=20\text{mA}$	—	605	—	nm

(Note): Lamps are classified into the following ranks according to their luminous intensity. Each packing box includes single Luminous Intensity class.

U:2720-7360mcd, V:4760-12900mcd, W:8500-23000mcd.

Precautions

- These LED lamps made of InGaAlP will also emit some IR light. If a photodetector is located near an LED lamp, please ensure that it will not be affected by this IR light.
- Manual soldering should be performed within 3 s at a maximum temperature of 300°C or 5 s at a maximum temperature of 260°C.
- When forming the leads, bend each lead without applying any forming stress. Soldering must be performed after the leads have been formed.



RESTRICTIONS ON PRODUCT USE

030619EAC

- The information contained herein is subject to change without notice.
- The information contained herein is presented only as a guide for the applications of our products. No responsibility is assumed by TOSHIBA for any infringements of patents or other rights of the third parties which may result from its use. No license is granted by implication or otherwise under any patent or patent rights of TOSHIBA or others.
- TOSHIBA is continually working to improve the quality and reliability of its products. Nevertheless, semiconductor devices in general can malfunction or fail due to their inherent electrical sensitivity and vulnerability to physical stress. It is the responsibility of the buyer, when utilizing TOSHIBA products, to comply with the standards of safety in making a safe design for the entire system, and to avoid situations in which a malfunction or failure of such TOSHIBA products could cause loss of human life, bodily injury or damage to property.
In developing your designs, please ensure that TOSHIBA products are used within specified operating ranges as set forth in the most recent TOSHIBA products specifications. Also, please keep in mind the precautions and conditions set forth in the "Handling Guide for Semiconductor Devices," or "TOSHIBA Semiconductor Reliability Handbook" etc..
- The TOSHIBA products listed in this document are intended for usage in general electronics applications (computer, personal equipment, office equipment, measuring equipment, industrial robotics, domestic appliances, etc.). These TOSHIBA products are neither intended nor warranted for usage in equipment that requires extraordinarily high quality and/or reliability or a malfunction or failure of which may cause loss of human life or bodily injury ("Unintended Usage"). Unintended Usage include atomic energy control instruments, airplane or spaceship instruments, transportation instruments, traffic signal instruments, combustion control instruments, medical instruments, all types of safety devices, etc.. Unintended Usage of TOSHIBA products listed in this document shall be made at the customer's own risk.
- TOSHIBA products should not be embedded to the downstream products which are prohibited to be produced and sold, under any law and regulations.
- GaAs(Gallium Arsenide) is used in this product. The dust or vapor is harmful to the human body. Do not break, cut, crush or dissolve chemically.