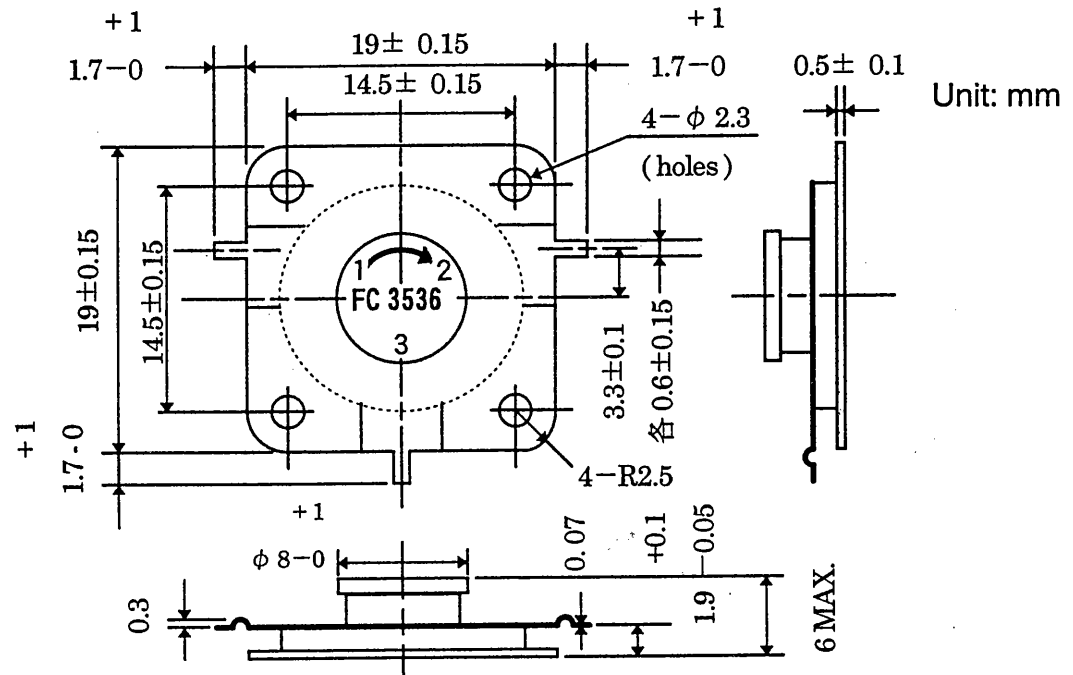


1. Electrical Characteristics

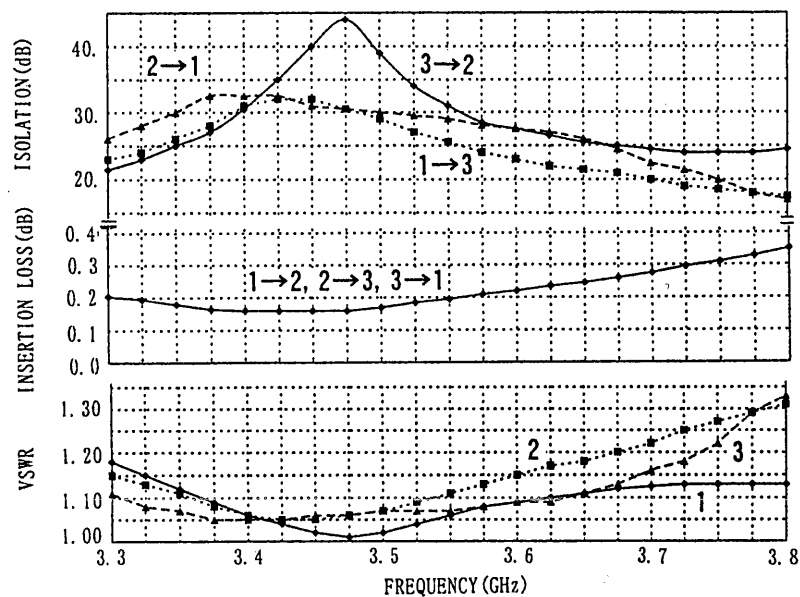
Frequency	3.5 - 3.6 GHz
VSWR	1.2 MAX.
Insertion Loss	0.50dB MAX.
Isolation	20dB MIN.

Handling Power	20W (CW) MAX.
Load VSWR	3 MAX.
Operating Temperature	0 ~ +80 °C
Storage Temperature	-10 ~ +85 °C

2. Outline



3. RF Performance



*The information contained herein is presented only as a guide for the applications of our products. No Responsibility is assumed by TOSHIBA for any infringements of patents or other rights of the third parties which may result from its use. No License is granted by implication or otherwise under any patent rights of TOSHIBA or others.

*The information contained herein may be changed without prior notice. It is therefore advisable to contact TOSHIBA before proceeding with the design of equipment incorporating product.

TOSHIBA CORPORATION

December 1998