

30 dB Bi-directional Coupler, 500 Watt 2 - 32 MHz

CH-130-4

V2.00

Features

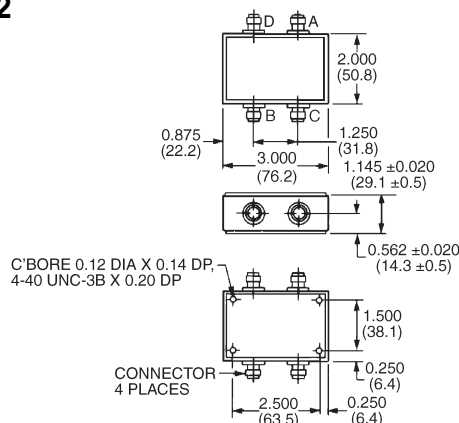
- High Power Handling Capability – 500 Watts
- Very Low Insertion Loss – 0.1 dB Max
- Low VSWR – 1.1:1 Max

Guaranteed Specifications*

(-55°C to +85°C)

Frequency Range	2-32 MHz
Coupling (Input to Output)	30 ± 0.5 dB
Coupling Flatness	± 0.25 dB Max
VSWR (All Ports)	1.1:1 Max
Directivity (Both Directions)	25 dB Min
Main Line Loss	0.1 dB Max

C-12



Dimensions in () are in mm.

Unless Otherwise Noted: .xxx = ±0.015

(.x = ±0.4)

WEIGHT (APPROX): 10 OUNCES 283 GRAMS

Operating Characteristics

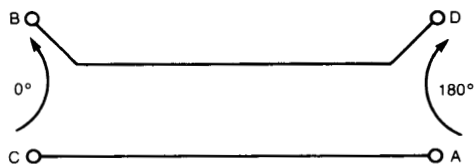
Input Power 500 Watts Max

Environmental

MIL-STD-202 screening available.

* All specifications apply with 50 ohm source and load impedance.
This product contains elements protected by United States Patent
Number 3,426,298.

Functional Diagram



Ordering Information

Part Number	Package
CD-130-4 N	Connectorized
CD-130-4 TNC	Connectorized
CD-130-4 BNC	Connectorized
CD-130-4 SMA	Connectorized

Typical Performance

