

P Series

The Chameleon Adaptable Module for General Purpose, DC Applications



**UL Recognized
CSA Certified
VDE Approved***

* Approvals pending

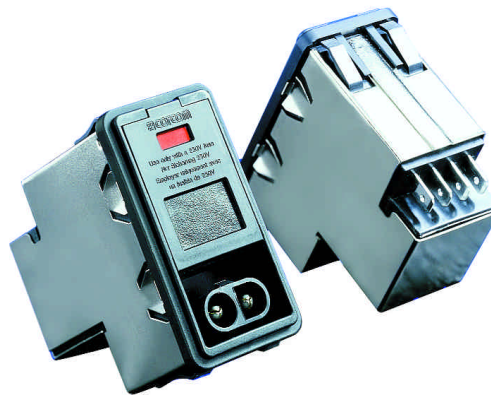
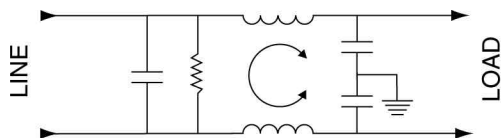
P Series

The DC version of the "P Series" power entry module offers full flexibility of design in the most compact package. It is a general purpose filter specifically designed for DC applications up to 80VDC. This module comes in snap-in or flange mount versions for easy mounting. It also allows for a single or dual fuse option.

The DC version of the "P Series" was designed to address the increasing demand for filtering on central office equipment and customer premises equipment, but not restricted to this type of equipment. Some examples include routers, desktop servers and switches multiplexors, aggregators, concentrators, etc.

The DC versions of the P Series mates with a standard Molex connector (HCS Series) which is readily available and prevents accidental connection to AC power.

Electrical Schematic



Specifications

Hipot rating (one minute):
line-to-ground 2250 VDC
line-to-line 1450 VDC

Fuseholder:
Accepts one or two fuses* 1/4" x 1-1/4"
or 5 x 20 mm

Rated voltage (max): 80 VDC

Terminals: 0.187" x 0.032" terminal tabs

Operating ambient temperature range:
(@ rated current I_r) -10°C to +40°C

In an ambient T_a , higher than +40°C, the maximum operating current, I_o , is as follows:

$$I_o = I_r \sqrt{\frac{85 - T_a}{45}}$$

*Conversion clip provided on fuseholder for single fuse models.

Minimum insertion loss in dB:

Line-to-ground in 50 ohm circuit

Current Rating	Frequency-MHz								
	.03	.1	.15	.5	1	3	5	10	30
3A	7	17	21	27	33	40	44	50	32
6A	-	8	12	17	23	32	36	44	30
10A	-	3	5	10	13	23	27	35	27

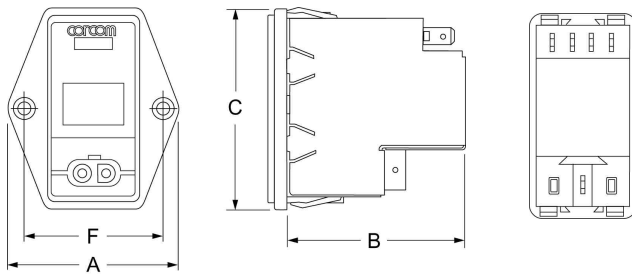
Line-to-line in 50 ohm circuit

Current Rating	Frequency-MHz							
	.10	.15	.5	1	3	5	10	30
3A	2	4	12	15	30	48	50	45
6A	2	4	12	15	22	42	55	45
10A	2	4	12	15	22	42	55	45

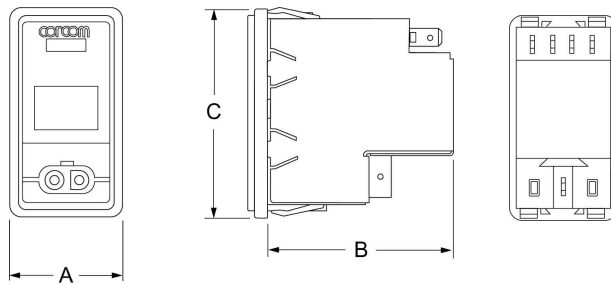
Case Styles

Metric shown in italics.

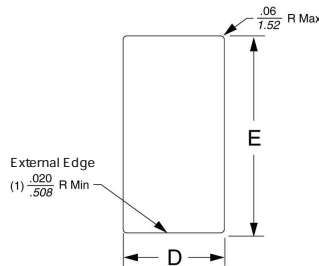
PE



PS



Recommended Panel Cutout



Note: For snap-in applications, the external edges (installation side) on the "D" sides of the cutout should have a minimum .020" radius. Snap-in models allow front mounting only and are not recommended for plastic panels. For optimal retention against extraction, the corresponding inner edge should be sharp, without paint or coatings. Edge coatings, including anodization are also discouraged for good shield contact.

Case Dimensions – Filtered Models

Metric shown in italics.

Part No.	A (max)	B (max)	C (max)	D $\frac{+.008/-0.000}{+.20/-0.00}$	E $\frac{+.008/-0.000}{+.20/-0.00}$	F
PE	$\frac{1.98}{50.3}$	$\frac{2.13}{54.1}$	$\frac{2.31}{58.7}$	$\frac{1.120}{28.45}$	$\frac{2.201}{55.91}$	$\frac{1.575}{40.0}$
PS	$\frac{1.24}{31.5}$	$\frac{2.13}{54.1}$	$\frac{2.31}{58.7}$	$\frac{1.120}{28.45}$	$\frac{2.201}{55.91}$	–

Ordering Information

Consult your local Corcom sales representative for pricing.

P S 0 0 0 D D 3 D

Shield Options

D = Complete shield
(DC version)

Filter Current

3 = 3 amps
6 = 6 amps
X = 10 amps

Filter Type

D = DC version

Fuse Options

D = Dual fuse
S = Single fuse

Input Voltage Select

0 = Single voltage

Switch Options

0 = No switch

Extender Options

0 = None

Mounting Style

E = Mounting ears
S = Snap-in

Available Part Numbers

PE000DD3D	PS000DD3D
PE000DD6D	PS000DD6D
PE000DDXD	PS000DDXD
PE000SD3D	PS000SD3D
PE000SD6D	PS000SD6D
PE000SDXD	PS000SDXD

DC Connector No. GA210

Mating Connectors



Corcom Part Number:

GA210 - Custom connector assembly with 2, 36" long 16 gauge wires to mate with P Series filter

Molex Component Part Numbers:

03-12-1026 Connector housing to mate with P Series
18-12-1222 Female Terminal (2 needed per housing)