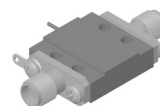




6884-700



2.0 TO 12.0 GHz QSL MICROWAVE AMPLIFIER

- SMALL SIGNAL GAIN: 26.0 dB (TYP.)
- POWER OUTPUT: +12.5 dBm (TYP.)
- NOISE FIGURE: 5.0 dB (TYP.)
- INTERNAL VOLTAGE REGULATION
- FIELD REPLACEABLE RF CONNECTORS

Specifications (Rev. Date: 3/02)*

Characteristics	Typical	Guaranteed	
		+25°C	-40° to +70°C
Frequency	1.5-13.0 GHz	2.0-128.0 GHz	2.0-12.0 GHz
Small Signal Gain (min.)	26.0 dB	24.5 dB	22.5 dB
Gain Flatness (max.)	±2.5 dB	±3.0 dB	±3.0 dB
Reverse Isolation	50 dB		
Noise Figure (max.)	5.0 dB	6.5 dB	7.0 dB
Power Output @ 1 dB comp. (min.)	+12.5 dBm	+11.5 dBm	+11.0 dBm
IP3	+23 dBm		
VSWR Input / Output (max.)	2.1:1 / 1.7:1	2.3:1 / 2.0:1	2.5:1 / 2.2:1
DC Current @ 15 Volts (max.)	95 mA	105 mA	115 mA

*Measured in a 50-ohm system at +15 Vdc Nominal.

Absolute Maximum Ratings

Storage Temperature	-62° to +125°C
Max. Case Temperature	125°C
Max. DC Voltage	+18 Volts
Max. Continuous RF Input Power	+13 dBm
Max. Short Term RF Input Power (1 minute max.)	50 mW
Max. Peak Power (3 µsec max.)	0.5 W

Outline Drawings

Package	QSL
Figure	QB
Model	6884-700

M/A-COM Inc. and its affiliates reserve the right to make changes to the product(s) or information contained herein without notice. M/A-COM makes no warranty, representation or guarantee regarding the suitability of its products for any particular purpose, nor does M/A-COM assume any liability whatsoever arising out of the use or application of any product(s) or information.