

# AYO Series

Lower Current  
Three Phase  
RFI Filters



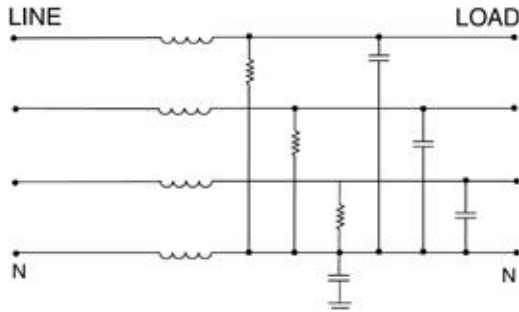
UL Recognized  
CSA Certified  
VDE Approved

## AYO Series

The AYO series filters are designed for 3-phase, four wire, WYE applications providing filtering in each of the three lines plus neutral.

These lower current RFI filters provide filtering to industrial 3-phase applications.

## Electrical Schematic



## Specifications

Maximum leakage current, each line-to-ground

	<b>3, 6, 10A</b>	<b>20A</b>
@ 120 VAC 60 Hz:	2.0 mA	3.5mA
@ 250 VAC 50 Hz:	3.0 mA	5.5mA

Hipot rating (one minute):

line-to-ground	1500 VAC
line-to-line	1450 VDC

Operating frequency:

50/60 Hz

Rated voltage:

phase-to-phase	440 VAC
phase-to-neutral/ground	250 VAC

Rated current:

	<b>@120 VAC</b>	<b>@250 VAC</b>
3AYO1	3A	3A
6AYO1	6A	6A
10AYO1	10A	10A
20AYO1	20A	20A

**Minimum** insertion loss in dB:

Line-to-ground in 50 ohm circuit

Current Rating	Frequency-MHz					
	.15	.5	1	5	10	30
3	12	23	29	33	38	35
6	7	23	30	40	50	30
10	-	-	5	16	28	15
20	-	7	11	32	23	12

Line-to-line in 50 ohm circuit

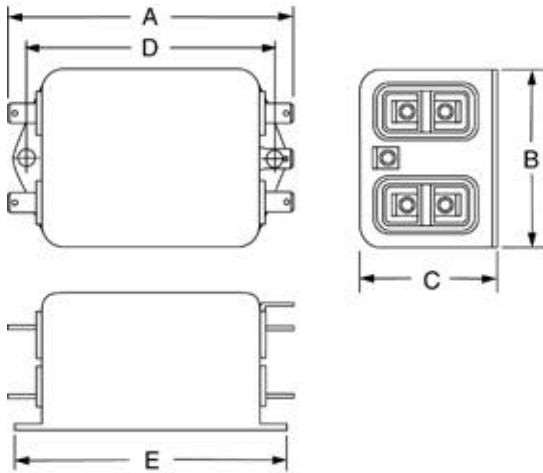
Current Rating	Frequency-MHz					
	.15	.5	1	5	10	30
3	-	12	20	50	35	30
6	10	18	24	31	28	28
10	10	18	24	42	28	22
20	10	18	24	42	38	23

# Series AYO

## Case Style

Metric shown in italics.

### AYO



Typical dimensions

Terminals:  $\frac{.250}{6.35}$  (9) Holes:  $\frac{.07}{1.8}$  Dia.(8) Slot:  $\frac{.07 \times .16}{1.8 \times 4.1}$  Mounting holes:  $\frac{.188}{4.78}$  Dia.(2)

## Case Dimensions

Metric shown in italics.

Part No.	A (max)	B (max)	C (max)	D $\pm \frac{.015}{.38}$	E (max)
AYO	$\frac{3.37}{85.6}$	$\frac{2.07}{52.5}$	$\frac{1.53}{38.7}$	$\frac{2.938}{74.63}$	$\frac{3.35}{85.1}$

## Ordering Information

Consult your local Corcom sales representative for pricing.



## Available Part Numbers

- 3AY01
- 6AY01
- 10AY01
- 20AY01