

EBF Series

Accessory Outlet Filter



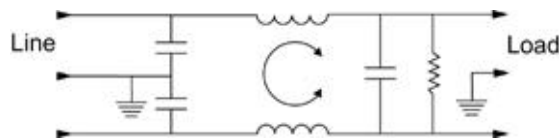
UL Recognized
CSA Certified
VDE Approved
SEMKO Approved*

EBF Series

The EBF accessory outlet filters provide an innovative means of connecting accessories while filtering noise between a system and the accessories attached. These filters provide enhanced performance utilizing common mode inductance and differential mode capacitance for attenuation of noise across the frequency range.

The filtered connector offers the additional advantage of a grounded connection and features low leakage current required for international usage.

Electrical Schematic



Resistor location for reference only.



Specifications

Maximum leakage current, each

| | | |
|----------------|------------------|--------|
| line-to-ground | @ 120 VAC 60 Hz: | .25 mA |
| | @ 250 VAC 50 Hz: | .50 mA |

Hipot rating (one minute):

| | |
|----------------|----------|
| line-to-ground | 1500 VAC |
| line-to-line | 1450 VDC |

Operating frequency:

50/60 Hz

Rated voltage:

120/250 VAC

Minimum insertion loss in dB:

Line-to-ground in 50 ohm circuit

| Current Rating | Frequency-MHz | | | | | | |
|-------------------|---------------|-----|----|----|----|----|----|
| | .05 | .15 | .5 | 1 | 5 | 10 | 30 |
| 1A | 23 | 32 | 41 | 47 | 47 | 47 | 40 |
| 3A | 10 | 19 | 30 | 36 | 48 | 50 | 47 |
| 6A | 1 | 10 | 22 | 28 | 42 | 48 | 47 |
| 10A | 1 | 5 | 14 | 20 | 32 | 38 | 47 |

Line-to-line in 50 ohm circuit

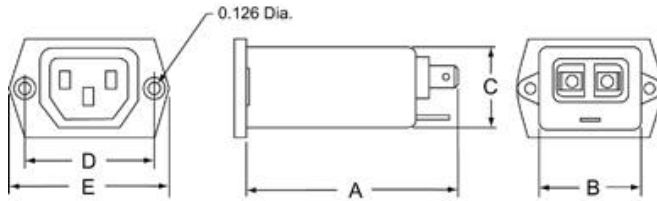
| Current Rating | Frequency-MHz | | | | | | |
|-------------------|---------------|----|----|----|----|----|----|
| | .15 | .5 | 1 | 3 | 5 | 10 | 30 |
| 1A | 3 | 14 | 23 | 41 | 47 | 50 | 44 |
| 3A | 2 | 11 | 14 | 25 | 38 | 44 | 40 |
| 6A | 2 | 10 | 14 | 20 | 33 | 42 | 40 |
| 10A | 2 | 10 | 16 | 19 | 19 | 39 | 40 |

* Except 10A models

Case Styles

Metric shown in italics.

EBF1

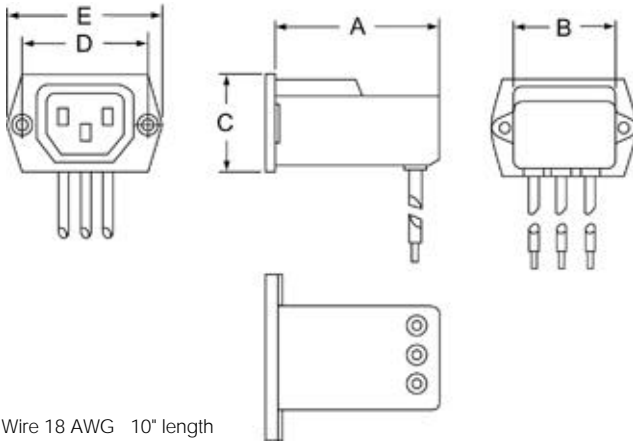


Typical dimensions

Terminals: $\frac{.250}{6.35}$ (3) Holes: $\frac{.07}{1.8}$ Dia.(2) Slot: $\frac{.07 \times .16}{1.8 \times 4.1}$

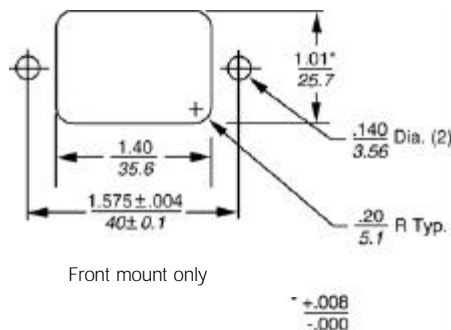
Mounting holes: $\frac{.132}{3.35}$ Dia.(2) with .250 Dia. x 90° countersunk for #4 Flathead Screw

EBF4



Wire 18 AWG 10" length

Recommended Panel Cutouts



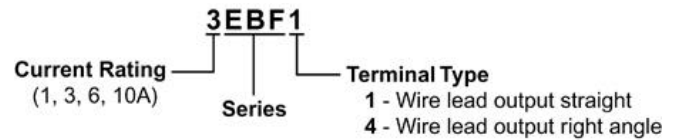
Case Dimensions

Metric shown in italics.

| Part No. | A (max) | B (max) | C (max) | D $\pm .010$ $\pm .25$ | E (max) |
|----------|----------------------|----------------------|----------------------|------------------------------|---------------------|
| EBF1 | $\frac{2.57}{65.3}$ | $\frac{1.33}{33.8}$ | $\frac{1.0}{25.4}$ | $\frac{1.575}{40.01}$ | $\frac{1.99}{50.5}$ |
| EBF4 | $\frac{2.09}{53.01}$ | $\frac{1.39}{35.31}$ | $\frac{1.16}{29.46}$ | $\frac{1.575}{40.01}$ | $\frac{1.99}{50.5}$ |

Ordering Information

Consult your local Corcom sales representative for pricing.



Available Part Numbers

| | |
|--------|--------|
| 1EBF1 | 1EBF4 |
| 3EBF1 | 3EBF4 |
| 6EBF1 | 6EBF4 |
| 10EBF1 | 10EBF4 |