

K Series — Low Cost

Most Cost Effective
General Purpose
RFI Power Line Filters



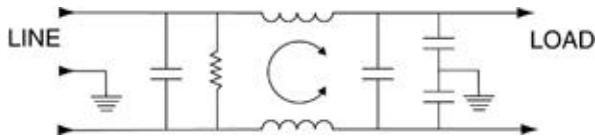
UL Recognized
CSA Certified
VDE Approved

K Series - Low Cost

Corcom K series general purpose filters are available in an improved design. The 2, 3 and 5 amp models have been redesigned to allow solderless connections, economical construction and a shorter case style. The same general purpose filtering as the K series is now available as the cost reduced VK1L.

The VK1L series features a compact case style with terminals on the line and load side. Flanges on either side provide for easy mounting. With a lower price, the series is well suited for high volume applications.

Electrical Schematic



Resistor location for reference only.



VK1L

Specifications

Maximum leakage current, each	
line-to-ground @ 120 VAC 60 Hz:	.4 mA
@ 250 VAC 50 Hz:	.7 mA
Hipot rating (one minute):	
line-to-ground	2250 VDC
line-to-line	1450 VDC
Operating frequency:	50/60 Hz
Rated voltage:	120/250 VAC

Minimum insertion loss in dB:

Line-to-ground in 50 ohm circuit

Current Rating	Frequency-MHz							
	.15	.5	1	2	5	10	20	30
3A	21	34	38	44	53	55	55	50
2A, 5A	10	25	32	37	46	50	52	53

Line-to-line in 50 ohm circuit

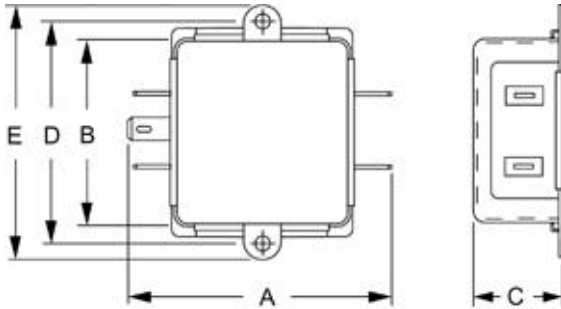
Current Rating	Frequency-MHz							
	.15	.5	1	2	5	10	20	30
3A	3	32	50	63	60	42	42	50
2A, 5A	5	5	40	60	63	60	50	50

Series K — Low Cost

Case Style

Metric shown in italics.

VK1L



Typical dimensions

Terminals: $\frac{.250}{6.35}$ (5) Holes: $\frac{.07}{1.8}$ Dia.(4) Slot: $\frac{.07 \times .16}{1.8 \times 4.1}$ Mounting holes: $\frac{.188}{4.78}$ Dia.(2)

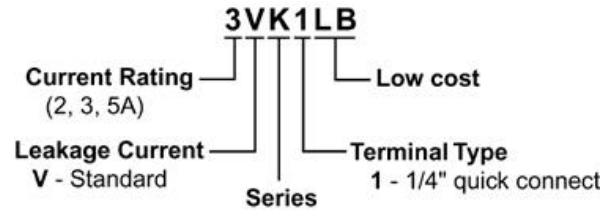
Case Dimensions

Metric shown in italics.

Part No.	A (max)	B (max)	C (max)	D $\frac{+.015}{-.38}$	E (max)
VK1L	3.095	2.03	.905	2.375	2.805
6EH1LB	78.15	51.01	22.85	59.97	70.83

Ordering Information

Consult your local Corcom sales representative for pricing.



Available Part Numbers

2VK1L
3VK1L
5VK1L