

# MV Series

**Multi-purpose Medical Filter  
for Power Line Noise Protection  
with Limited Leakage Current**



**UL Recognized  
CSA Certified  
VDE Approved**

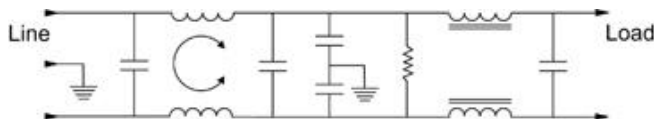
## MV Series

The MV series answers the need for a medical filter to help equipment comply with increasing noise sources in medical applications while still meeting leakage current requirements of UL2601.

Less strict than previous UL medical standards, UL2601 limits leakage current for patient care equipment. Due to the increased need for higher performance filtering, UL has allowed more leakage current than in previous standards.

The MV takes advantage of this to offer improved line-to-ground performance in a moderately priced filter. Higher line-to-line performance is achieved through its additional differential mode rod inductors. Overall, the filter provides a good solution to emission and immunity problems, at a moderate cost, in a reasonable package size.

## Electrical Schematic



Resistor location for reference only.



3A, 6A, 10A

## Specifications

Maximum leakage current, each  
line-to-ground @ 120VAC 60 Hz: .07mA  
@ 250VAC 50 Hz: .13mA

Hipot rating (one minute):  
line-to-ground 2250 VDC  
line-to-line 1450 VDC

Operating frequency: 50/60 Hz

Rated voltage: 120/250 VAC

Rated current:	@ 120VAC	@ 250VAC
3MV	3A	2.5A
6MV	6A	5A
10MV	10A	8A
20MV	20A	16A

### Minimum insertion loss in dB:

Line-to-ground in 50 ohm circuit

Current Rating	Frequency-MHz							
	.15	.5	1	2	5	10	20	30
3A	14	19	20	30	46	40	34	31
6A	19	27	30	38	50	40	35	35
10A	15	25	26	34	46	50	44	42
20A	18	30	34	34	46	40	36	20

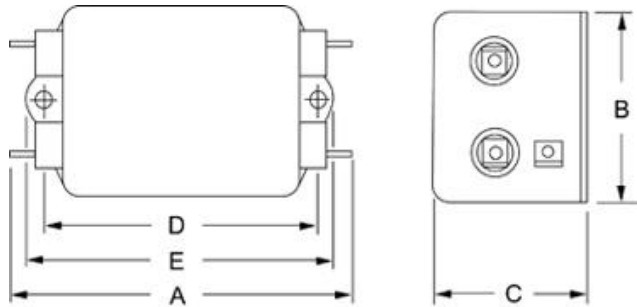
Line-to-line in 50 ohm circuit

Current Rating	Frequency-MHz							
	.15	.5	1	2	5	10	20	30
3A	33	65	65	65	65	60	53	50
6A	40	65	65	65	65	60	57	55
10A	33	65	65	65	65	65	55	55
20A	25	65	65	65	65	60	57	45

Case Styles

Metric shown in italics.

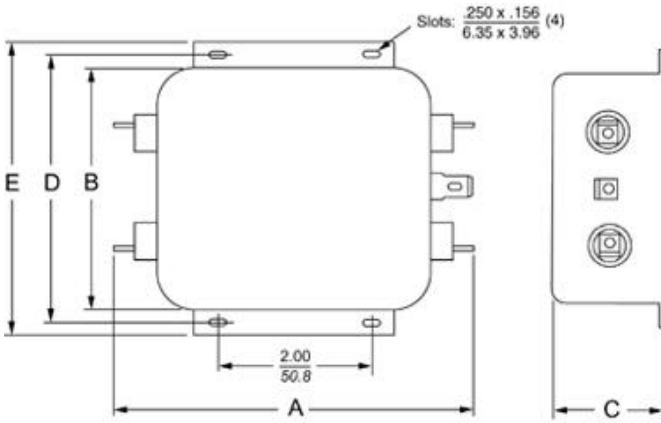
3A, 6A, 10A



Typical dimensions

Terminals:  $\frac{.250}{6.35}$  (5) Holes:  $\frac{.07}{1.8}$  Dia.(4) Slot:  $\frac{.07 \times .16}{1.8 \times 4.1}$  Mounting holes:  $\frac{.188}{4.78}$  Dia.(2)

20A



Typical dimensions

Terminals:  $\frac{.250}{6.35}$  (5) Holes:  $\frac{.07}{1.8}$  Dia.(4) Slot:  $\frac{.07 \times .16}{1.8 \times 4.1}$

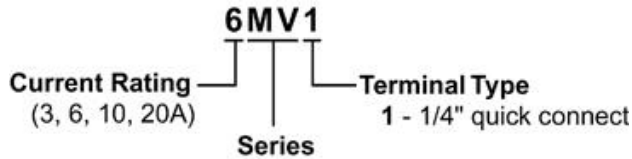
Case Dimensions

Metric shown in italics.

Part No.	A (max)	B (max)	C (max)	D $\pm .015$ $\pm .38$	E (max)
3MV1	3.36 <i>85.3</i>	1.82 <i>46.2</i>	1.28 <i>32.5</i>	2.375 <i>60.33</i>	2.78 <i>70.6</i>
6MV1	3.86 <i>98.0</i>	2.08 <i>52.8</i>	1.53 <i>38.9</i>	2.938 <i>74.63</i>	3.34 <i>84.8</i>
10MV1	3.86 <i>98.0</i>	2.08 <i>52.8</i>	1.53 <i>38.9</i>	2.938 <i>74.63</i>	3.34 <i>84.8</i>
20MV1	5.23 <i>132.8</i>	3.38 <i>85.9</i>	1.53 <i>38.9</i>	3.75 <i>95.25</i>	4.2 <i>106.7</i>

Ordering Information

Consult your local Corcom sales representative for pricing.



Available Part Numbers

- 3MV1
- 6MV1
- 10MV1
- 20MV1