

# Monolithic crystal filter

## MQF21.421-3000/04



### Application

- 8 pol filter
- i.f.- filter
- use in mobile and stationary transceivers

### Limiting values

		Unit	Value
Center frequency	$f_0$	MHz	21.421
Insertion loss		dB	$\leq 4.0$
Pass band at 3.0 dB		kHz	$\pm 15.00$
Ripple in pass band	$f_0 \pm 12.00$ kHz	dB	$\leq 2.0$
Stop band attenuation	$f_0 \pm 31$ kHz	dB	$\geq 60$
Alternate attenuation	$f_0 \pm 500$ kHz	dB	$> 80$
VSWR	$f_0 \pm 10$ kHz		$< 1.8$
IP3	stop band	dBm	$> 30$

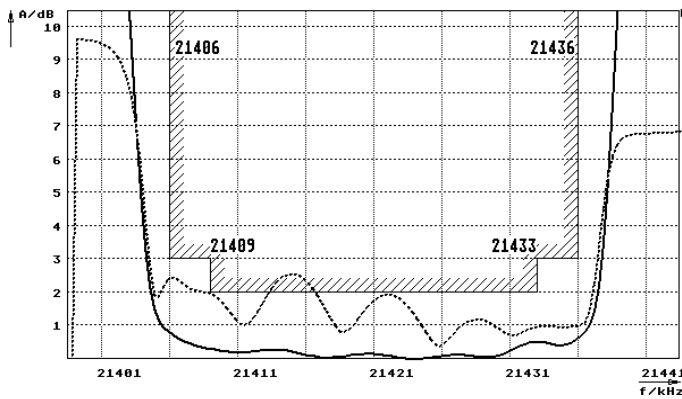
### Terminating impedance Z

R1    C1	Ohm/pF	50    0
R2    C2	Ohm/pF	50    0

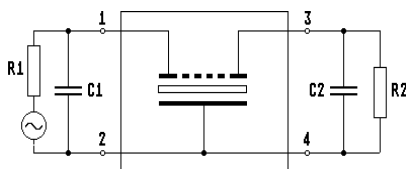
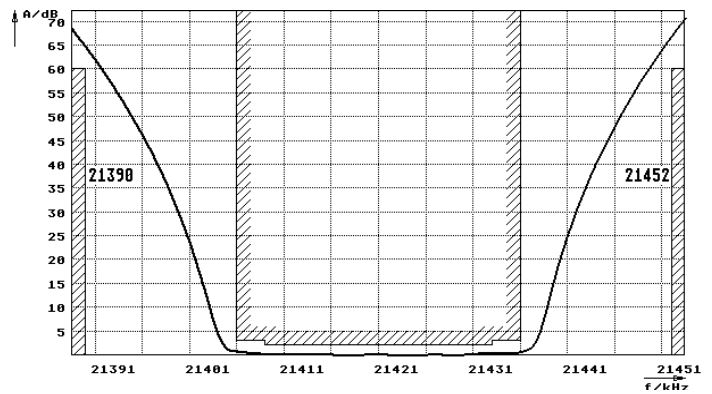
Operating temp. range ° C -20... +70

### Characteristics MQF21.421-3000/04

#### Pass band



#### Stop band



Pin connections: 1 Input  
2 Input-E  
3 Output  
4 Output-E

