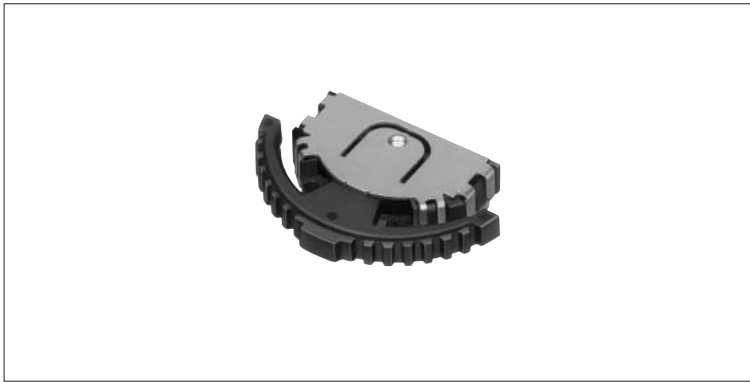


## Lever and Push Operation Type Switch

**SLLB5 Series**

**2004  
New**

**Compact, two-way input device approximately 50% the size of our conventional models.**

### Features

- Outside dimensions = 9.5×8.8×2.2mm (small type).
- We've achieved a projected area equaling 50% (compared with our past products).
- Available for reflow soldering.

### Applications

- Selection/decision for menus such as a mobile phone, personal digital assistant, and digital camera, etc.

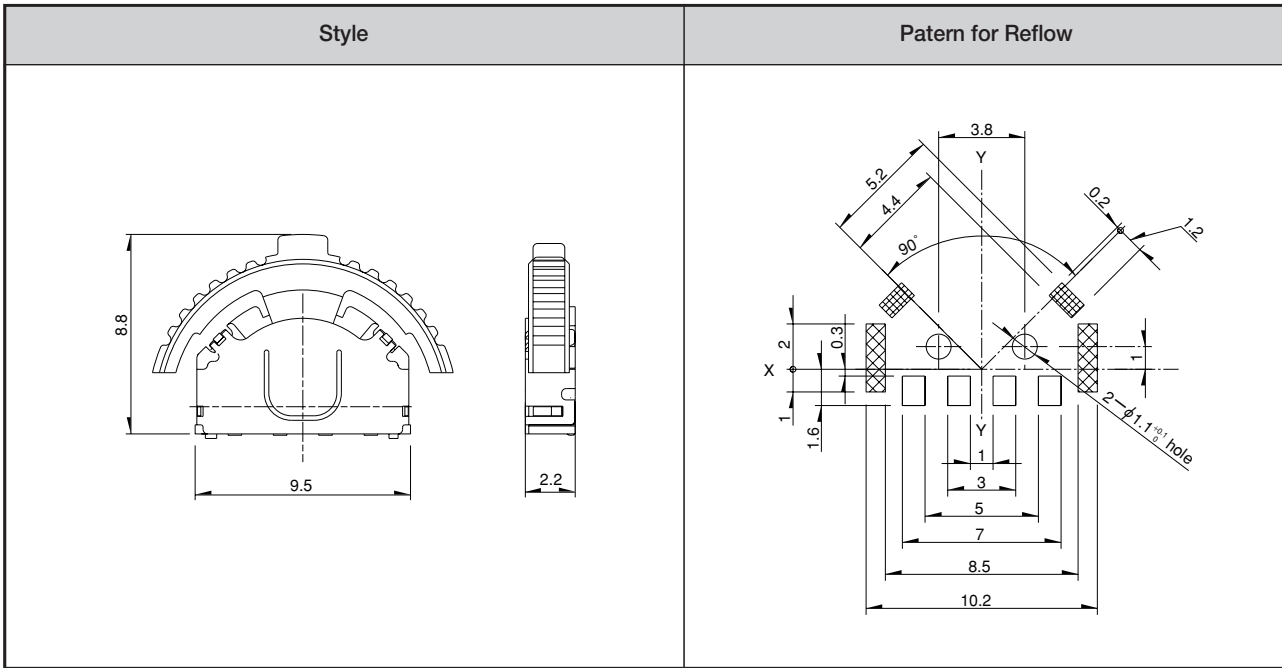
### Typical Specifications

Items		Rating	
Products No.		SLLB510100	SLLB510200
Location lug		with	without
Dimensions (W) × (D)		9.5×8.8mm	
Thickness		2.2mm	
Operating force	Push portion	2.5N	
	Lever portion	0.65N	
Travel (Push operation)		0.7mm	
Lever devoted angle		20°	
Rating (max.)		10mA 5V DC	
Operating life		100,000 cycles	



## Dimensions

Unit:mm



### CAUTION

1. Unless specifically indicated otherwise, products in this catalog have been designed and manufactured for use in ordinary electronic equipment and devices, such as AV equipment, electric home appliances, office machines, and communications equipment. Equipment manufacturers are consequently advised that when these products are planned for equipment that requires a high degree of safety and reliability, especially those apparatuses like medical equipment, aviation and aircraft equipment, space equipment, and burglar alarm equipment, the manufacturers should assure equipment safety by providing protection circuits and redundant circuitry and should fully study the suitability of such products for the intended equipment.
2. Specification indicated in this catalog is outline only. When employing the product, use of an officially authorized specification for supply contract is recommended.
3. The external appearance, performances, and other properties of the product may be changed for improvement without prior notice. The product introduced in this catalogue may discontinue being produced without prior notice.
4. Names for products and companies and titles of specifications indicated in this catalogue are mostly trademarks or registered trademarks of their respective owners.
5. Please contact us for any enquiries and queries on our products and their uses.
6. This catalog is valid till the end of December 2004.

**ALPS ELECTRIC CO., LTD.**

For more information please contact : Sales or Products Information Center.  
 1-7, YUKIGAYA-OTSUKA-CHO, OTA-KU, TOKYO, JAPAN 145-8501 PHONE : (03) 5499 -8154 (DIRECT)  
 Homepage <http://www.alps.co.jp/>