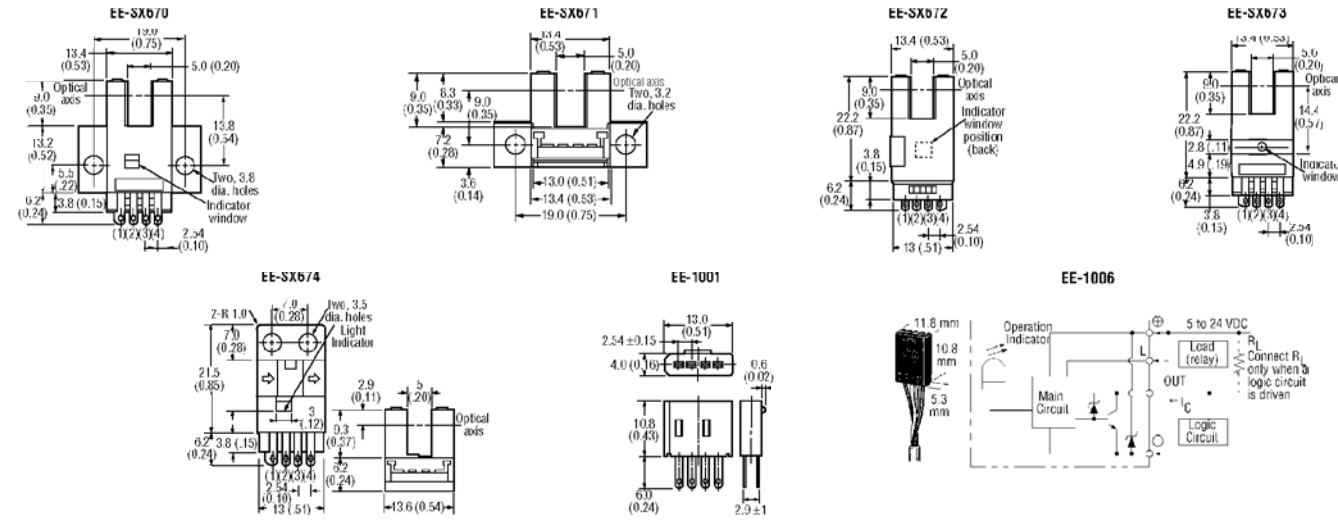


5 mm Slot Sensing Heads in Wide Variety of Configurations



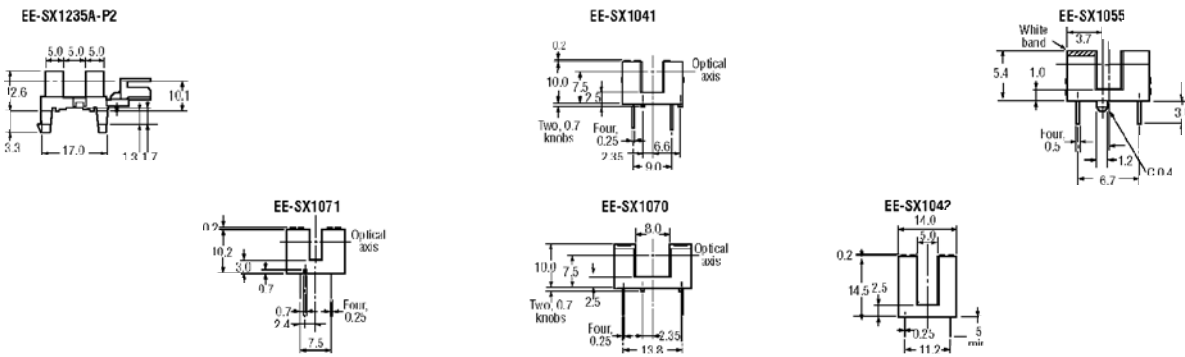
4

Transmissive sensing heads in standard, L-shaped, T-shaped and close-mounting configurations match most applications. Wide 5-24 VDC operating voltage range makes these photomicrosensors compatible with TTLs, relays and programmable controllers. Wire selectable Light-ON/Dark-ON output operation. Operation indicator for easy monitoring. Wire directly to sensor or use optional EE-1001 unwired or EE-1006 prewired connectors for convenience in servicing. **Output Specifications:** 100 mA load with 0.8 V residual voltage; 40 mA load with 0.4 V residual voltage when driving TTL. **Response Frequency:** 1 kHz (3 kHz typical). **Sensing Method:** Transmissive. **Sensing Distance:** 5 mm slot width with opaque 0.8 x 2 mm object 0.025 mm differential distance. **Power Requirements:** 5 to 24 VDC ±10% 10% max. ripple peak-to-peak 35 mA current consumption. PNP output types available.

Stock No.	Mfr.'s Type	Output Type	Body Configuration	EACH
821-8108	EE-SX670	Light-ON/Dark-ON	Standard	15.29
821-8109	EE-SX671	Light-ON/Dark-ON	L-Shaped	14.88
821-8110	EE-SX672	Light-ON/Dark-ON	T-Shaped	15.06
821-8111	EE-SX673	Light-ON/Dark-ON	Close-Mounting	16.84
821-8130	EE-SX674	Light-ON/Dark-ON	Close-Mounting	17.33

**Accessories**  
 821-8112, EE-1001, Unwired Connector.....EACH 1.95  
 821-8113, EE-1006, Prewired Connector, 2 m (6.6 ft.) Cable.....EACH 10.07

Economical Non-Amplified Transmissive Sensors



► Varying Slot Width and Depth Allows Versatile Sensing of Multiple Object Sizes

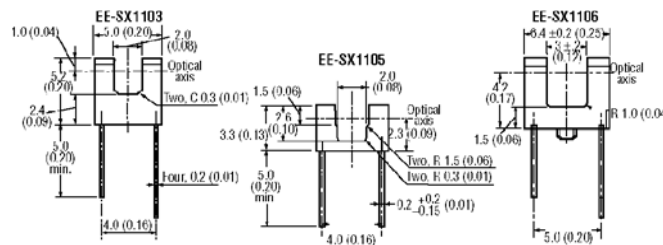
Stock No.	Mfr.'s Type	Aperture Size (mm) W x L	Slot Width (mm)	IL				tr, tf				RL (Ω)	IL (mA)	EACH
				Min. (mA)	Max. (mA)	IF (mA)	VCE (V)	tr (μsec.)	tf (μsec.)	VCC (V)				
821-8131	EE-SX1235A-P2	0.5 x 5.0	5.0	0.6	14.0	20	5	8	8	5	100	1	1.50	
821-8132	EE-SX1041	0.5 x 2.2	5.0	0.5	14.0	20	10	4	4	5	100	5	1.50	
821-8133	EE-SX1055	0.5 x 1.5	2.8	0.5	14.0	20	10	4	4	5	100	5	1.75	
821-8005	EE-SX1071	0.5 x 2.1	3.4	0.5	14.0	20	10	4	4	5	100	5	1.55	
821-8008	EE-SX1070	0.5 x 2.2	8.0	0.5	0.5	10	10	4	4	5	100	20	1.55	
821-8009	EE-SX1042*	0.5 x 2.0	5.0	0.5	14.0	20	10	4	4	5	100	20	1.50	

\*The EE-SX1042 slot depth is 12 mm.

Photomicrosensors

**EE-SX**  
 Ultra compact photomicrosensors ideal for use in applications with restricted spaces. High resolution sensing (0.4 mm). Each sensor has phototransistor output. Low profile 3.3 mm (EE-SX1105). **Sensing Method:** Transmissive. **Dimensions (L x W x H):** 3.3 x 4.9 x 2.6 mm.

Stock No.	Mfr.'s Type	Slot		Sensing Object	Weight	EACH		
		Width	Depth			1-24	25-99	100-249
821-8015	EE-SX1103	2 mm	2.8 mm	Opaque 0.4 x 1.2 mm min.	0.15 g	1.13	1.00	.93
821-8016	EE-SX1105	2 mm	2.6 mm	Opaque 0.4 x 1.0 mm min.	0.06 g	1.13	1.00	.93
821-8017	EE-SX1106	3 mm	3.9 mm	Opaque 0.4 x 1.2 mm min.	0.18 g	1.13	1.00	.93



Prices Subject To Change — We Always Ship At The Lowest Price In Effect

ALLIED ► 179