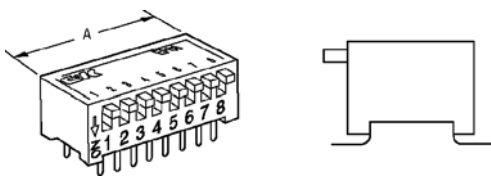


BPA Series Side Actuated DIP Switches

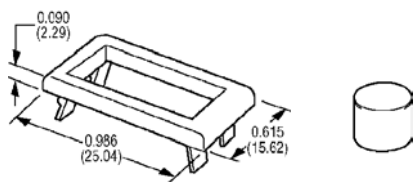


5

High temperature materials (UL 94V-0) — withstands soldering temperatures. SPST switch function — 2, 4, 5, 6, 7, 8, 9, and 10 position models. Reverse throw models available. Side actuators with positive detent. Reliable wiping contact mechanism-self cleaning. Gold and tin plated contacts available. All terminals tin plated for solderability.

Stock No.	Mfr.'s Type	No. of Poles	Dim. — In. (mm)		EACH		
			A		1-99	100-499	500-999
676-9000	BPA02K	2	0.280 (7.11)		1.22	1.07	.98
676-9004	BPA04K	4	0.480 (12.19)		1.59	1.39	1.27
676-9005	BPA05K	5	0.578 (14.68)		1.65	1.44	1.32
676-9006	BPA06K	6	0.678 (17.22)		1.78	1.57	1.43
676-9007	BPA07K	7	0.778 (19.76)		1.82	1.60	1.46
676-9008	BPA08K	8	0.878 (22.30)		1.84	1.63	1.48
676-9050	BPA09K	9	0.978 (24.84)		2.00	1.80	1.63
676-9009	BPA10K	10	1.078 (27.38)		2.05	1.79	1.63
676-9045	BPA04SK	4	0.480 (12.19)		1.69	1.48	1.35
676-9046	BPA06SK	6	0.678 (17.22)		1.88	1.66	1.51
676-9047	BPA08SK	8	0.878 (22.30)		1.80	1.60	1.45
676-9048	BPA10SK	10	1.078 (27.38)		2.15	1.88	1.71

Hardware for Switches



Plastic caps for miniature and subminiature pushbutton switches. Nickel-plated hex nuts and dress nuts for miniature and subminiature toggle and pushbutton switches. Frames snap into panel openings and are independent from switch mounting. Accurate positioning of the PC-mounted switch relative to the panel opening is necessary to provide proper clearance between actuator and frame. **Material:** Nylon. **Finish:** Round caps — Gloss; Square caps — Matte.

Caps for Pushbutton Switches

Stock No.	Mfr.'s Type	Cap Dia. (In.)	Color	Plunger Height (In.)	EACH		
					1-99	100-499	500-999
676-6114	708902000	0.200	Black	0.122	.27	.24	.22
676-9947	708903000	0.200	Red	0.122	.44	.39	.36
676-9298	798202263	0.450 sq.	Black	0.122	.42	.37	.35
676-9299	508102000	0.200	Black	0.100	.58	.51	.47
676-9300	465802000	0.300	Black	0.100	.31	.28	.26
676-4500	752702000	0.375	Black	0.122	.29	.26	.24
676-6141	752703000	0.375	Red	0.122	.46	.41	.38
676-6144	801802000	0.310	Black	0.122	.29	.26	.24
676-6145	801803000	0.310	Red	0.122	.62	.54	.50

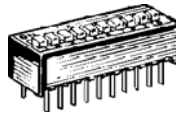
Nickel-Plated Nuts

Stock No.	Mfr.'s Type	Thread	EACH		
			1-99	100-499	500-999
676-6109	700201201	1/4-40	.17	.15	.14
676-6111	702501201	1/4-40	.29	.26	.24
676-9301	776001201	1/4-40	.27	.24	.22
676-9302	709901201	1/4-40 Blind	.23	.20	.19
676-9303	780701201	1/4-40	.19	.17	.16

Frames for 7000 Series Rockers

Stock No.	Mfr.'s Type	Panel Thickness (In.)	Frame Opening (In.)	EACH		
				1-99	100-499	500-999
676-6104	452802263	0.090	0.703 x 0.388	.46	.41	.38

BD Series Standard Profile DIP Switches

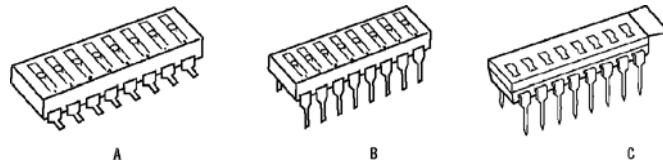


Contact Rating: Carry — 100 mA max. at 50 VDC; Switch — 100 mA max. at 5 VDC or 25 mA max. at 25 VDC. **Operating Temperature:** -40°C to 85°C. **Case and Cover:** Glass filled polyester, red. **Actuator:** Glass filled nylon, white. **Terminals:** Tin lead.

Vertical Mounted DIP Switches

Stock No.	Mfr.'s Type	No. of Positions	EACH		
			1-99	100-499	500-999
676-1210	BD01	1	1.18	1.03	.94
676-1215	BD02	2	1.45	1.27	1.16
676-1220	BD03	3	1.24	1.09	.99
676-1225	BD04	4	1.27	1.11	1.02
676-1230	BD05	5	1.65	1.44	1.32
676-1235	BD06	6	1.71	1.50	1.37
676-1240	BD07	7	1.77	1.54	1.41
676-1245	BD08	8	1.43	1.26	1.15
676-1255	BD10	10	1.98	1.74	1.59
676-1260	BD12	12	1.79	1.57	1.43

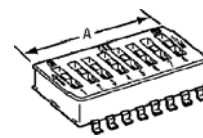
SDA Series Sealed DIP Switches



Low profile SPST DIP switches withstand soldering and cleaning processes. "SK" models are surface mount. **HO:** Flush actuator. **H1:** Extended actuator. **Contact Rating:** 100 mA max. @ 20 VDC for 1000 cycles. Terminals are tin-lead. To order without tape seal, add "D" to the end of the Mfr.'s Type.

Stock No.	Mfr.'s Type	Fig.	No. of Positions	Overall Length (In.)	EACH		
					1-99	100-499	500-999
676-9014	SDA02HOSK	A	2	0.258	1.52	1.21	1.12
676-9015	SDA03HOSK	A	3	0.358	1.57	1.26	1.17
676-9016	SDA04HOSK	A	4	0.458	1.75	1.40	1.30
676-9017	SDA05HOSK	A	5	0.558	1.95	1.55	1.44
676-9018	SDA06HOSK	A	6	0.658	2.10	1.71	1.59
676-9019	SDA07HOSK	A	7	0.758	2.22	1.80	1.68
676-9020	SDA08HOSK	A	8	0.858	2.30	1.87	1.73
676-9021	SDA09HOSK	A	9	0.958	2.46	2.01	1.87
676-9022	SDA10HOSK	A	10	1.058	2.60	2.12	1.97
676-9023	SDA12HOSK	A	12	1.258	2.72	2.21	2.05
676-9024	SDA02HOKD	B	2	0.258	1.14	.91	.85
676-9025	SDA03HOKD	B	3	0.358	1.20	.96	.89
676-9026	SDA04HOKD	B	4	0.458	1.29	1.04	.96
676-9027	SDA05HOKD	B	5	0.558	1.40	1.11	1.03
676-9028	SDA06HOKD	B	6	0.658	1.49	1.19	1.11
676-9029	SDA07HOKD	B	7	0.758	1.59	1.27	1.18
676-9030	SDA08HOKD	B	8	0.858	1.67	1.33	1.24
676-9031	SDA09HOKD	B	9	0.958	1.75	1.40	1.30
676-9032	SDA10HOKD	B	10	1.058	1.84	1.48	1.37
676-9033	SDA12HOKD	B	12	1.258	1.93	1.54	1.43
676-9034	SDA02H1KD	C	2	0.258	1.14	.91	.85
676-9035	SDA03H1KD	C	3	0.358	1.19	.96	.89
676-9036	SDA04H1KD	C	4	0.458	1.29	1.04	.96
676-9037	SDA05H1KD	C	5	0.558	1.40	1.11	1.03
676-9038	SDA06H1KD	C	6	0.658	1.49	1.19	1.11
676-9039	SDA07H1KD	C	7	0.758	1.59	1.27	1.18
676-9040	SDA08H1KD	C	8	0.858	1.67	1.33	1.24
676-9041	SDA09H1KD	C	9	0.958	1.75	1.40	1.30
676-9042	SDA10H1KD	C	10	1.058	1.84	1.48	1.37
676-9043	SDA12H1KD	C	12	1.258	1.93	1.54	1.43

TDA Series Sealed 0.050" Pitch Surface Mount DIP Switches



Surface mountable, low profile SPST DIP switch with spacing of 0.050" between terminals. Body height of 0.090". Gull wing terminals are tin-lead plated. Taped sealed switch is vacuum pick and place compatible, and will withstand machine soldering and cleaning. Can withstand vapor phase and IR soldering up to 260°C. **Contact Rating:** 0.4 VA @ 20 VDC. **Contacts:** Gold plated. **Life Expectancy:** 1,000 cycles min. **Initial Contact Resistance:** 50 milliohms max.

Stock No.	Mfr.'s Type	No. of Positions	Dim. — In. (mm)		EACH		
			A		1-99	100-499	500-999
676-9049	TDA02HOSK1	2	0.144 (3.66)		2.93	2.58	2.39
676-9010	TDA04HOSK1	4	0.244 (6.20)		2.40	2.15	1.96
676-9011	TDA06HOSK1	6	0.344 (8.74)		3.38	3.01	2.75
676-9012	TDA08HOSK1	8	0.444 (11.28)		2.72	2.42	2.21
676-9013	TDA10HOSK1	10	0.544 (13.82)		5.21	4.64	4.24