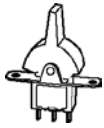
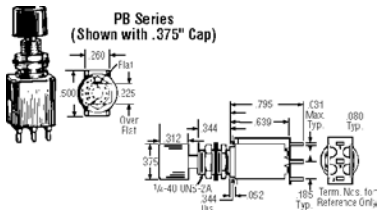


**Miniature Paddle Switches**



Contact Rating: 6 A @ 125 VAC, 3 A @ 250 VAC. UL Recognized, CSA Certified. Coin silver contacts, solder lug terminals, includes mounting hardware.

Stock No.	Mfr.'s Type	Circuit	Action (Momentary)	EACH		
				1-24	25-99	100-249
747-6018	B121J2Z02	SPDT	On-Off-On	5.96	5.38	5.08
747-6019	B123J2Z02	SPDT	On-None-On	5.62	5.00	4.76
747-6020	B127J2Z02	SPDT	(On)-Off-(On)	5.96	5.38	5.08
747-6021	B221J2Z02	DPDT	On-Off-On	8.33	7.55	7.03
747-6022	B223J2Z02	DPDT	On-None-On	7.48	6.82	6.48
747-6023	B221J2Z02	DPDT	(On)-Off-(On)	8.33	7.55	7.03
747-6024	B321J2Z02	3PDT	On-Off-On	12.93	11.41	10.74
747-6025	B323J2Z02	3PDT	On-None-On	11.91	10.49	9.81
747-6026	B423J2Z02	4PDT	On-None-On	16.17	14.78	13.96



**PB Series Pushbutton Switches**

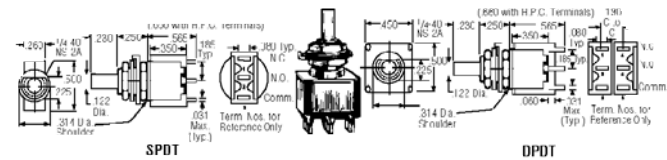
Maintained and Momentary Panel mount. PB series with 3 cap sizes and colors, sold separately. See table below. Specifications. Contact Rating: 6 A @ 125 VAC; 3 A @ 250 VAC; 6 A @ 28 VDC, resistive (UL listed). 100,000 make-and-break cycles for maintained models; 60,000 for momentary, resistive load only. Coin silver contacts. Solder lugs. Other terminals styles available upon request.

Stock No.	Mfr.'s Type	Circuit	Action (Momentary)	EACH		
				1-24	25-99	100-249
747-0780	PB-12300ZQ	SPDT	On-On	4.98	3.96	3.45
747-0781	PB-12600ZQ	SPDT	On-(On)	5.18	4.12	3.57

**Caps for Above**

747-0784. W-KN-14. Black. .375 Dia. ....EACH .23	747-0900. W-KN-31. Black. .310 Dia. ....EACH .19
747-0785. W-KN-14A. White. .375 Dia. ....EACH .24	747-0901. W-KN-31A. White. .310 Dia. ....EACH .27
747-0786. W-KN-14B. Red. .375 Dia. ....EACH .21	747-0902. W-KN-31B. Red. .310 Dia. ....EACH .19
747-0789. W-KN-12B. Red. .200 Dia. ....EACH .17	

**Momentary Snap Action**



Specifications. Contact Rating: 5 A resistive (1 pole), 1 A resistive (2 pole) @ 125 VAC or 28 VDC (UL listed) or 0.4 Volt-amp (VA) maximum @ 28 V max. (AC or DC), 60,000 cycles minimum at full load resistive. Center and End Contact: 1 and 5 A, brass, silver inlay and gold flash for solderability. .4 VA — brass, 50 millionth gold plated over nickel. Epoxy seal is standard. Caps sold separately.

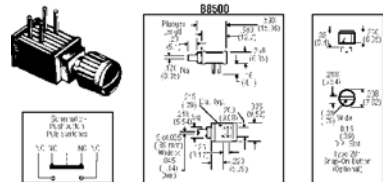
Stock No.	Mfr.'s Type	Circuit	Terminal/Rating	EACH		
				1-24	25-99	100-249
747-0790	PS1-100Q	SPDT	S.L. 5 A	6.07	5.66	4.72
747-0793	PS2-100B	SPDT	PC. 4 VA	7.03	5.46	4.77
747-0794	PS1-200Q	DPDT	S.L. 1 A	10.05	7.98	6.71
747-0795	PS2-200Q	DPDT	PC 1A	11.16	8.93	7.60
747-0796	PS1-200B	DPDT	S.L. .4 VA	9.43	7.29	6.40

**Caps for Above**

747-8800. W-KN-16B. Red. .200 Dia. ....EACH .21	747-8805. W-KN-18A. White. .450 Sq. Dia. ....EACH .24
747-8804. W-KN-18. Black. .450 Sq. Dia. ....EACH .24	747-8806. W-KN-18B. Red. .450 Sq. Dia. ....EACH .24

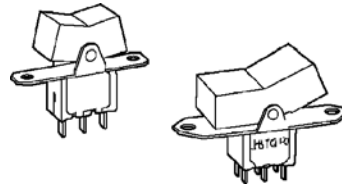
**PCB Subminiature Pushbutton Switch**

"Crossed Wire" contact system eliminates bounce. High contact pressure gives low contact resistance. Drain holes permit complete flux washdown. Solid silver contacts with gold over nickel plate. Momentary or latch-down (depress plunger and rotate 30° clockwise) operation. Current Ratings: 1 A @ 6 VDC and 12 VDC; 0.5 A @ 28 VAC and 125 VAC. 2 circuit poles and throw. Right angle PC mounting. Note: Optional snap-on buttons should be ordered separately.



747-0100. B8500. 0.160" (4.1 mm) Terminal Length. 1-24	.....EACH 3.59
25-49	.....EACH 3.13
50-99	.....EACH 2.97
747-0281. P281R. Red Snap-On Button. 1-24	.....EACH .33
25-49	.....EACH .21
50-99	.....EACH .21
747-0282. P281B. Black Snap-On Button. 1-24	.....EACH .33
25-49	.....EACH .21
50-99	.....EACH .21

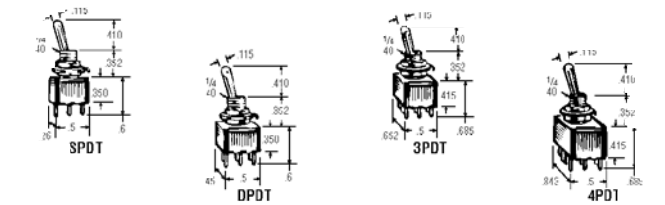
**Miniature Rocker Switches**



Contact Rating: 6 A @ 125 VAC, 3 A @ 250 VAC. UL Recognized, CSA Certified. Coin silver contacts, solder lug terminals, includes mounting hardware.

Stock No.	Mfr.'s Type	Circuit	Action (Momentary)	EACH		
				1-24	25-99	100-249
747-6000	B121J1Z02	SPDT	On-Off-On	5.96	5.38	5.08
747-6001	B123J1Z02	SPDT	On-None-On	5.62	5.00	4.76
747-6002	B127J1Z02	SPDT	(On)-Off-(On)	5.96	5.38	5.08
747-6003	B221J1Z02	DPDT	On-Off-On	8.33	7.55	7.03
747-6004	B223J1Z02	DPDT	On-None-On	7.48	6.82	6.48
747-6005	B221J1Z02	DPDT	(On)-Off-(On)	8.33	7.55	7.03
747-6006	B321J1Z02	3PDT	On-Off-On	12.93	11.41	10.74
747-6007	B323J1Z02	3PDT	On-None-On	11.91	10.49	9.81
747-6008	B423J1Z02	4PDT	On-None-On	16.16	14.78	13.96
747-6009	B121J3Z02	SPDT	On-Off-On	5.96	5.38	5.08
747-6010	B123J3Z02	SPDT	On-None-On	5.62	5.00	4.76
747-6011	B127J3Z02	SPDT	(On)-Off-(On)	5.96	5.38	5.08
747-6012	B221J3Z02	DPDT	On-Off-On	8.33	7.55	7.03
747-6013	B223J3Z02	DPDT	On-None-On	7.48	6.82	6.48
747-6014	B221J3Z02	DPDT	(On)-Off-(On)	8.33	7.55	7.03
747-6015	B321J3Z02	3PDT	On-Off-On	12.93	11.41	10.74
747-6016	B323J3Z02	3PDT	On-None-On	11.91	10.49	9.81
747-6017	B423J3Z02	4PDT	On-None-On	16.16	14.78	13.96

**Miniature Toggle Switches**



Panel Mount One hole mounting, 1/4" threaded bushing, bat lever. Contact Rating: 6 A @ 225 VAC/28 VDC; 3 A @ 250 VAC. UL Listed. Coin silver contacts, solder lug terminals. Includes mounting hardware.

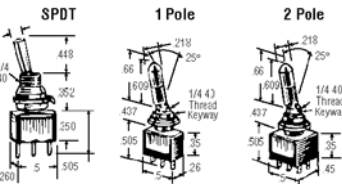
Stock No.	Mfr.'s Type	Circuit	Action (Momentary)	EACH		
				1-24	25-99	100-Up
747-9351	A121S1Y2Q	SPDT	On-Off-On	4.16	3.39	2.92
747-9353	A123S1Y2Q	SPDT	On-None-On	3.73	3.03	2.61
747-9356	A126S1Y2Q	SPDT	On-None-(On)	4.99	4.06	3.50
747-9357	A127S1Y2Q	SPDT	(On)-Off-(On)	4.16	3.39	2.92
747-9361	A131S1Y2Q	SPDT	On-Off-(On)	6.24	5.08	4.37
747-9381	A221S1Y2Q	DPDT	On-Off-On	5.78	4.78	4.17
747-9383	A223S1Y2Q	DPDT	On-None-On	5.84	4.84	4.22
747-9386	A226S1Y2Q	DPDT	On-None-(On)	7.19	5.93	5.17
747-9387	A227S1Y2Q	DPDT	(On)-Off-(On)	6.85	5.76	5.03
747-9392	A232S1Y2Q	DPDT	On-None-On	9.67	7.91	6.87
747-3422	A321S1Y2Q	3PDT	On-Off-On	14.70	11.39	9.89
747-3423	A323S1Y2Q	3PDT	On-None-On	11.09	8.58	7.42
747-3451	A421S1Y2Q	4PDT	On-Off-On	19.17	16.12	14.11
747-3453	A423S1Y2Q	4PDT	On-None-On	14.70	12.44	10.90

PC Mount Same as panel mount except they are furnished with straight terminals. Terminals are gold flash over silver. Epoxy seal standard. Rating: 5 A @ 28 V AC/DC. Includes mounting hardware.

747-9501	A121S1Y2Q	SPDT	On-Off-On	5.55	4.52	3.91
747-9503	A123S1Y2Q	SPDT	On-None-On	3.82	3.11	2.69
747-9505	A221S1Y2Q	DPDT	On-Off-On	7.35	6.10	5.34
747-9507	A223S1Y2Q	DPDT	On-None-On	6.53	5.44	4.76

**Miniature Flat Handle and Lever-Lock Switches**

Flat Handle: Flat lever — brass, satin chrome finish. Rated: 6 A @ 125 VAC, 28 VDC; 3 A @ 250 VAC. UL listed. Solder lug terminals. Lever Lock: Prevents accidental actuation — lever must be lifted and moved to other position. All switches include mounting hardware.



Stock No.	Mfr.'s Type	Circuit	Action	EACH		
				1-24	25-99	100-Up
747-3321	A121P32Y5ZQ	SPDT	On-Off-On	7.54	6.36	5.64
747-3323	A123P32Y5ZQ	SPDT	On-None-On	8.38	7.06	6.27
747-3203	A123K12KZQ*	SPDT	On-None-On	7.60	6.25	5.69
747-3414	A221P32Y5ZQ	DPDT	On-Off-On	10.27	8.85	7.89
747-3416	A223P32Y5ZQ	DPDT	On-None-On	6.70	5.71	5.10
747-3213	A223K12KZQ*	DPDT	On-None-On	9.03	7.98	7.24

\*Lever lock.