

Fig. 1

Pushbutton Switch MPA/MPE/MPG Series

Molded-in heat terminals eliminate switch mechanism contamination. Gold flash contacts and terminals inhibit oxidation and extend shelf life. Dialyl phthalate cases permit these switches to withstand wide temperature ranges. Each switch has one-piece bushing to reduce the possibility of tear-off damage when mounting. All hardware is supplied unmounted. Contact Rating: 6 amps at 125 VAC; 3 amps at 250 VAC; 4 amps at 28 VDC. Solid silver contacts. Operating Force: 2.5 to 4.4 lbs. Plunger Travel: 125° avg. Insulation Resistance: 1000 ohms. Dielectric Strength: 1500 V RMS at sea level. Life Expectancy: 50 K operations. Terminal seal included at no extra charge. Order cap separately.

Table with 11 columns: Stock No., Mfr.'s Type, Fig., Description, Lead Spacing, A, B, C, D, E, and EACH (1-99, 100-499, 500-999). Rows include various MPA and MPE models with their descriptions and dimensions.

\*Caps not supplied. †Black cap supplied. Refer to full line catalog, model number C90.

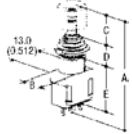


Fig. 2

MP/MSP Series Pushbutton Switch

Material Specifications: Contacts: MSPF/MSP3/MSP5: Silver plate. MSPM: Gold. Case Material: MSPF: Thermoset. MSPM: Steel. MSP3/MSP5: Thermoplastic. Actuator Material: MSPM: Nylon. MSPF/MSP3/MSP5: Thermoplastic. Terminals: Silver plate. Typical Performance Characteristics: Contact Rating: MSPF: 0.5 Amps at 125 VAC. MSPM: 1.0 VA optimum (100 mA max. 50 VDC max.). MSP3: 3 Amps at 125 VAC. MSP5: 0.5 Amps at 125 VAC. Life Expectancy: MSPF: 10000 cycles min. MSPM: 500000 cycles at 0.1 VA. MSP3/MSP5: 10000 Cycles. Operating Temperature: MSPF: -20°C to 80°C. MSPM: -10°C to 80°C. MSP3/MSP5: -20°C to 80°C.

Table with 11 columns: Stock No., Mfr.'s Type, Fig., Description, Lead Spacing, A, B, C, D, E, and EACH (1-99, 100-499, 500-999). Rows include various MSPF and MSPM models with their descriptions and dimensions.

\*Caps model number C22 supplied.

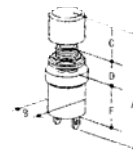


Fig. 1

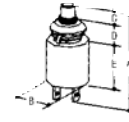
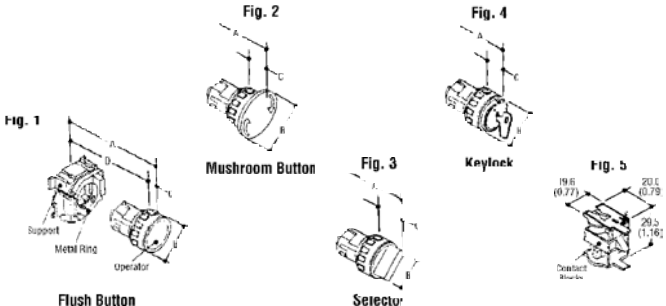


Fig. 2

Reliant '22 Series Oil Tight Industrial Controls



- Fits 7/8" (22 mm) Diameter Holes
► Protection Level: 1 P 65
► Buttons Are Full Size
► Meets NEMA 1, 12, 13
► Finish: Matte Black Bezel
► Simple "No-Tool" Mounting
► Fully Insulated — Thermoplastic or Heavy-Duty Metal Bushings
► Contacts: Double-Break Silver Snap-Block, 6 A @ 600 VAC
► Stackable

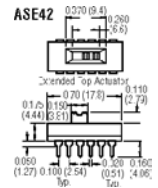
These controls utilize a snap-on contact block system with pushbuttons for a variety of switching configurations — momentary and maintained, lighted and unlighted, round and square keylocks and selectors. Suited for direct and pilot duty. Maximum contact rating of 6 A at 600 VAC. Contemporary front panel design. Order contact blocks separately.

Table with 11 columns: Stock No., Mfr.'s Type, Fig., Description, A, B, C, D, 1-99, 100-249, 250-499. Rows include various Reliant '22 Series models like flush round buttons, mushroom buttons, and selector operators with their dimensions and quantities.

ASE/F Series Auto-Insertable Slides

Units withstand aqueous or solvent cleaning processes. High temperature antistatic plastic withstands surface mount, vapor phase reflow or wave soldering. Type ASE: Extended actuator open-ended case allows washout after cleaning. Type ASF: DIP package with flush actuator allows auto insertion on standard IC equipment. Tape seal and closed case provide process seal. Bevel Length: 0.260" (6.60) except 4P3T — 0.360" (9.14). Surface mount terminals (not shown) 0.100" (2.54) on center. R-right angle.

Table with 4 columns: Model, Quantity, and Price. Rows include ASE22, ASE42, and ASF22 models with their respective quantities and prices.



Check Pricing And Availability Of All Items On The Internet At www.alliedelec.com

ALLIED ► 257