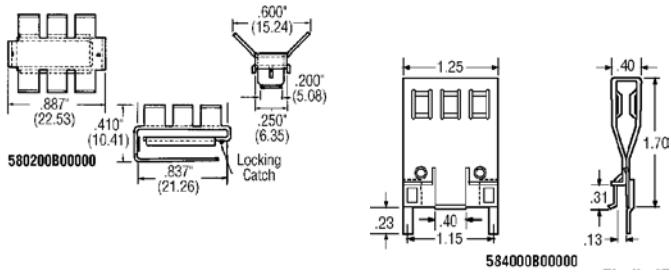


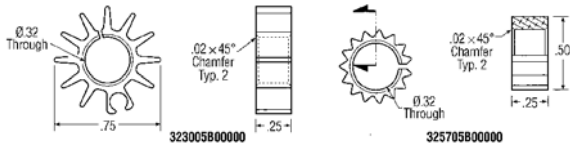
All material is aluminum alloy with a black, anodized finish unless otherwise noted.

Slide-On for DIPs and SIPs



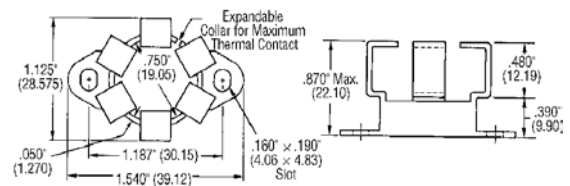
Stock No.	Mfr.'s Type	For DIP/SIP Pins	EACH			
			1-99	100-499	500-999	1000-Up
619-6047	580200B00000	DIP 14 or 16	.75	.50	.37	.30
619-5840	584000B00000	SIP 28	.62	.56	.52	.48

Press-On for TO-5



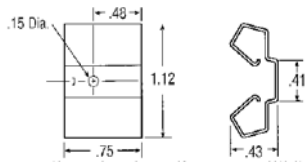
Stock No.	Mfr.'s Type	EACH			
		1-24	25-99	100-499	500-Up
619-0040	323005B00000	1.03	.87	.74	.62
619-0060	325705B00000	1.03	.87	.80	.75

Expandable Collar for TO-3



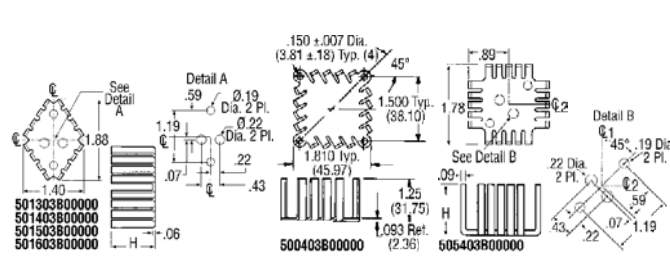
Stock No.	Mfr.'s Type	Case Style	EACH			
			1-24	25-99	100-499	500-Up
619-6042	579103B00000	TO-3	.85	.76	.64	.53

Snap-Down for TO-220



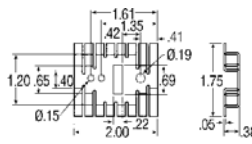
Stock No.	Mfr.'s Type	EACH			
		1-99	100-499	500-999	1000-Up
619-0310	575102B00000	.75	.50	.38	.30

For TO-3



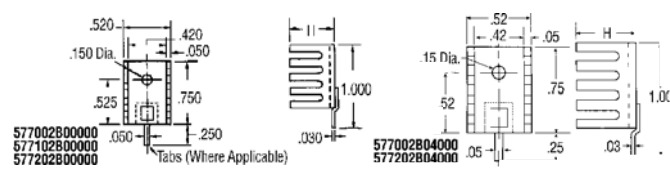
Stock No.	Mfr.'s Type	Dim. (In.)	EACH			
			H	1-24	25-99	100-499
619-0110	501303B00000	0.50	.76	.68	.58	.49
619-0111	501403B00000	0.75	.82	.73	.62	.54
619-0112	501503B00000	1.00	1.20	1.06	.90	.77
619-0113	501603B00000	1.25	1.23	1.09	.92	.78
619-0121	500403B00000	1.25	1.97	1.72	1.47	1.24
619-0140	505403B00000	1.25	1.71	1.43	1.22	1.03

Economy, Low Profile for TO-3



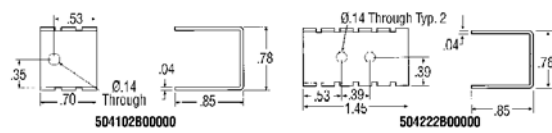
Stock No.	Mfr.'s Type	EACH			
		1-24	25-99	100-499	500-Up
619-0150	506007B00000	.95	.83	.75	.61

Compact, Limited Space for TO-220



Stock No.	Mfr.'s Type	Tabs	Dim. (In.)	EACH			
				H	1-99	100-499	500-999
619-6014	577002B00000	No	0.250	.51	.34	.26	.21
619-6016	577102B00000	No	0.375	.45	.30	.23	.18
619-6018	577202B00000	No	0.500	.46	.31	.23	.18
619-6020	577002B04000	Yes	0.250	.73	.49	.37	.29
619-6024	577202B04000	Yes	0.500	.35	.32	.30	.28

Narrow, Low Profile for TO-220



Stock No.	Mfr.'s Type	EACH			
		1-99	100-499	500-999	1000-Up
619-0315	504102B00000	.62	.41	.31	.25
619-0320	504222B00000	.85	.57	.43	.34