

Finishes: 1 — Standard (no code), cadmium plate with drab olive chromate finish; 2 — (639) cadmium plate with clear chromate finish; 3 — (621) zinc with black zinc finish; 4 — (689) electroless nickel finish; 5 — (676) shiny nickel finish.

For finishes other than drab olive, add the finish code to the end of the part number.

Type 97-60 Dust Caps — Finishes 1, 2, 3, 4

For Receptacles

Provides protection against live circuits and keeps out dirt and dust when connector is not in use. Has internal threads especially designed for use with Series 3100A, 3101A and 3102A receptacles. Beaded chain. A soft rubber disc sits on the connector shell forming a watertight joint. **Average Shipping Weight:** 2 oz.



For Plugs

Male caps and chains especially designed for Series 3106, 3107 and 3108 plugs. Have external threads and are used on all plugs where a coupling ring is provided. Provide excellent protection against live circuits in a wide variety of applications. Beaded chain. **Average Shipping Weight:** 2 oz.



Stock No.	Mfr.'s Type	Fits Shell	Dimensions (Inches)			EACH	
			Threads	A	B	1-9	10-49
714-2538	97-60-10	10S, 10SL	5/8-24	1 1/16	7/16	3.65	2.84
714-2540	97-60-12	12S, 12SL	3/4-20	1 1/16	7/16	3.40	2.62
714-2542	97-60-14	14, 14S	7/8-20	1 1/16	7/16	3.52	2.80
714-2544	97-60-16	16, 16S	1-20	1 1/8	7/16	4.04	3.18
714-2546	97-60-18	18	1 1/8-18	1 1/16	7/16	4.54	3.63
714-2548	97-60-20	20	1 1/4-18	1 1/16	7/16	5.22	4.39
714-2550	97-60-22	22	1 3/8-18	1 1/16	7/16	5.47	4.62
714-2552	97-60-24	24	1 1/2-18	1 1/16	7/16	7.48	6.57
714-2554	97-60-28	28	1 3/4-18	1 5/16	7/16	7.33	6.43
714-2556	97-60-32	32	2-18	2 1/16	1/2	11.92	9.46
714-2558	97-60-36	36	2 1/4-16	2 1/16	1/2	13.91	11.58

Stock No.	Mfr.'s Type	Fits Shell	Dimensions (Inches)			EACH	
			Threads	A	B	1-9	10-49
714-2539	97-60-10P	10S, 10SL	5/8-24	5/8	2 1/32	4.12	3.32
714-2541	97-60-12P	12S, 12SL	3/4-20	3/4	2 1/32	7.60	6.66
714-2543	97-60-14P	14, 14S	7/8-20	7/8	2 1/32	5.17	4.49
714-2545	97-60-16P	16, 16S	1-20	1	2 1/32	5.69	4.91
714-2547	97-60-18P	18	1 1/8-18	1 1/8	2 1/32	7.03	6.09
714-2549	97-60-20P	20	1 1/4-18	1 1/4	2 1/32	12.26	11.03
714-2551	97-60-22P	22	1 3/8-18	1 3/8	2 1/32	12.68	11.40
714-2553	97-60-24P	24	1 1/2-18	1 1/2	2 1/32	15.12	13.60
714-2555	97-60-28P	28	1 3/4-18	1 3/4	2 1/32	9.47	8.40
714-2557	97-60-32P	32	2-18	2	2 1/32	26.01	21.68
714-2559	97-60-36P	36	2 1/4-16	2 1/4	2 1/32	18.87	15.72

AN3057 Cable Clamps — Finishes 1, 3, 4, 5

For jacketed cable or wires protected by tubing. Supports at plug or receptacle. Use with rubber bushing for firm grip. **Weight:** 3 1/2 oz.

Stock No.	Mfr.'s Type	Fits Shell	Max Cable O.D. (Inches)	EACH		
				1-9	10-49	50-99
714-2500	97-3057-3	8S, 10S	1/4	6.91	5.66	4.79
714-2501	97-3057-4	10SL, 12, 12S	5/16	6.67	5.19	4.25
714-2503	97-3057-6	12SL, 14, 14S	7/16	6.79	5.28	4.32
714-2505	97-3057-8	16, 16S	9/16	7.34	5.71	4.67
714-2507	97-3057-10	18	5/8	6.21	4.83	3.95
714-2533	97-3057-10-6†	18	1/2	5.83	4.77	4.03
714-2509	97-3057-12	20, 22	3/4	6.85	5.33	4.36
714-2534	97-3057-12-6†	20, 22	1/2	5.87	4.80	4.06
714-2511	97-3057-16	24, 28	15/16	6.91	5.37	4.40
714-2513	97-3057-20	32	1 1/4	8.43	6.90	5.84
714-2515	97-3057-24	36	1 3/8	8.66	7.08	5.99

†Step-down.

MS3420 Telescoping Boots

Amphenol Series 97-79-513
Rubber bushing designed for MS3057A cable clamp. Protects wire bundles and unjacketed cables from possible damage by cable clamp. Telescope for use with cable too small in relation to connector used. **Shipping Weight:** 1 1/2 oz.

Stock No.	Mfr.'s Type	Cable O.D.	EACH		
			1-9	10-49	50-99
714-2579	97-79-513-3	0.130	.74	.63	.52
714-2580	97-79-513-4	0.220	.86	.72	.59
714-2581	97-79-513-6	0.312	.85	.72	.59
714-2582	97-79-513-8	0.437	.74	.63	.52
714-2583	97-79-513-10	0.562	.73	.62	.50
714-2584	97-79-513-12	0.625	.84	.71	.58
714-2585	97-79-513-16	0.750	1.10	.91	.77
714-2586	97-79-513-20	0.937	1.80	1.43	1.20
714-2587	97-79-513-24	1.250	1.83	1.46	1.22

MS3057A Cable Clamp — Finishes 1, 3, 5



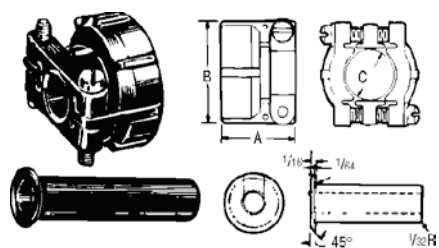
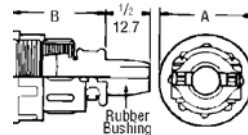
Strong, lightweight. Both clamping halves float so that cable is always centered for maximum strain relief. MS3420 boot (not included) provides support and weatherproofing. Boots may be used for small cables (order from table above right). **Shipping Weight:** 5 oz.

Stock No.	Mfr.'s Type	Fits Shell	Max Cable O.D. (Inches)	EACH		
				1-9	10-49	50-99
714-2502	97-3057-1004	10SL, 12, 12S	5/16	4.02	3.13	2.56
714-2504	97-3057-1007	12SL, 14, 14S	7/16	4.23	3.29	2.69
714-2506	97-3057-1008	16, 16S	9/16	3.72	2.89	2.37
714-2508	97-3057-1010	18	5/8	4.11	3.20	2.61
714-2510	97-3057-1012	20, 22	3/4	4.29	3.34	2.73
714-2512	97-3057-1016	24, 28	15/16	4.68	3.64	2.98
714-2514	97-3057-1020	32	1 1/4	6.96	5.69	4.82
714-2516	97-3057-1024	36	1 3/8	6.96	5.69	4.82

Water Resistant Cable Clamps — Finishes 1, 3, 4

The complete waterproof cable clamp assembly Type 97-67 (for use with MS connectors) consists of an AN3057 cable clamp, a rubber bushing, washer and an AN3055 adapter. It is available for all sizes MS and 97 plugs.

Stock No.	Mfr.'s Type	Max Cable O.D. (Inches)	Connector Size	Weight Lbs. Per 100	Dimensions (Inches)			EACH		
					Threads	A	B	1-9	10-49	50-99
714-2000	97-67-12-4	7/32	10SL, 12S, 12	3.82	5/8-24	25/32	1 17/32	15.28	11.46	10.22
714-2005	97-67-14-4	7/32	12SL, 14S, 14	3.87	3/4-20	29/32	1 17/32	16.37	12.21	10.97
714-2006	97-67-14-6	1 1/32	12SL, 14S, 14	5.54	3/4-20	29/32	1 19/32	16.02	12.02	10.70
714-2008	97-67-16-8	7/16	16S, 16	6.92	7/8-20	1 1/16	1 19/32	16.73	12.56	11.18
714-2010	97-67-16-6	1 1/32	16S, 16	5.84	7/8-20	1 1/16	1 19/32	16.54	12.40	11.06
714-2015	97-67-18-6	1 1/32	18	5.94	1-20	1 3/16	1 19/32	15.49	11.64	10.35
714-2020	97-67-18-8	7/16	18	7.10	1-20	1 3/16	1 19/32	17.11	12.83	11.45
714-2025	97-67-18-10	9/16	18	8.79	1-20	1 3/16	1 19/32	17.46	13.11	11.68
714-2030	97-67-22-8	7/16	20, 22	7.27	1 1/8-18	1 3/8	1 19/32	17.05	13.25	11.81
714-2035	97-67-22-10	9/16	20, 22	8.97	1 3/8-18	1 3/8	1 19/32	17.83	13.39	11.92
714-2045	97-67-22-12	1 1/16	20, 22	12.65	1 3/8-18	1 3/8	2 1/32	19.48	14.61	13.01
714-2040	97-67-28-12	9/16	24, 28	9.12	1 7/8-18	1 3/8	2 1/32	19.35	14.52	12.95
714-2048	97-67-28-12	1 1/16	24, 28	12.86	1 7/8-18	1 3/8	2 1/32	21.90	16.41	14.63
714-2050	97-67-28-16	2 1/32	24, 28	14.95	1 7/8-18	1 3/8	2 1/32	21.49	16.12	14.38
714-2055	97-67-32-20	1 1/32	32	22.27	1 3/4-18	1 15/16	3 1/32	48.03	42.23	—
714-2060	97-67-36-16	2 1/32	36	16.36	2-18	2 3/16	3 1/32	35.59	30.25	—



97 Series Cable Clamps with Rubber Bushing — Finishes 1, 3

For unjacketed cable and wires. Both clamping halves float for maximum strain relief. Two telescoping bushings are furnished with shell sizes 24 and larger.

Stock No.	Mfr.'s Type	Shell Size	Max Cable O.D. (Inches)	Boot Cable O.D. (Inches)	Dimensions (Inches)				EACH		
					Threads	A	B	C	1-9	10-49	50-99
714-2560	97-3057-1004-1	10SL, 12, 12S	5/16	0.220	5/8-24	0.795	0.842	5/16	4.89	3.80	3.11
714-2561	97-3057-1007-1	12SL, 14, 14S	7/16	0.312	3/4-20	0.850	0.995	7/16	4.59	3.57	2.92
714-2562	97-3057-1008-1	16, 16S	9/16	0.437	7/8-20	0.920	1.120	9/16	4.68	3.64	2.98
714-2563	97-3057-1010-1	18	5/8	0.562	1-20	0.920	1.216	5/8	4.83	3.76	3.07
714-2564	97-3057-1012-1	20, 22	3/4	0.625	1 3/8-18	0.927	1.403	3/4	5.25	4.08	3.34
714-2565	97-3057-1016-1	24, 28	15/16	0.750	1 7/8-18	1.015	1.683	15/16	6.51	5.06	4.14
714-2566	97-3057-1020-1	32	1 1/4	0.937	1 3/4-18	1.095	2.050	1 1/4	9.72	7.96	6.73
714-2567	97-3057-1024-1	36	1 3/8	1.250	2-18	1.156	2.245	1 3/8	10.34	8.46	7.16