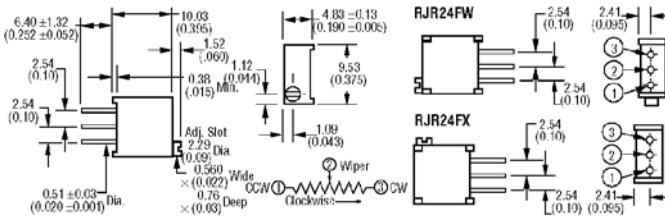


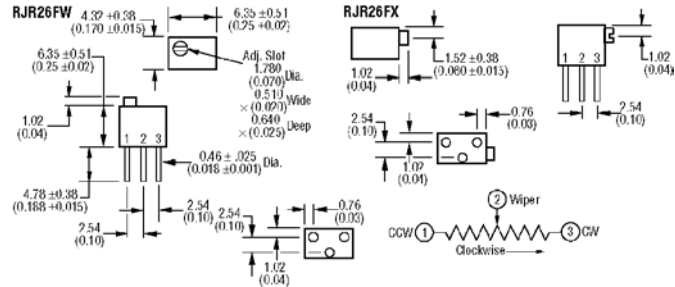
**Model RJR24 25-Turn Cermet** — **NEW** —



Listed on DESC QPL per high-rel Mil-R-39035. Thin body profile, multi-turn, cermet trimmer with infinite resolution. Wiper idling mechanism clicks at the end of rotation. Built-in standoffs. Sealed to withstand wave soldering and board washing processes. **Resistance Tolerance:** ±10%. **Power Rating:** 0.5 watt at 70°C. **Adjustment Tool:** H-90.

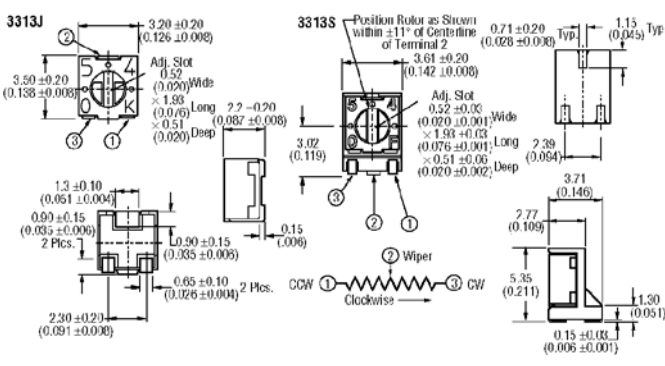
Stock No.	Mfr.'s Type	Ohms	EACH		
			1-9	10-24	25-49
754-0270	RJR24FW101R	100	2.88	2.60	2.50
754-0271	RJR24FW102R	1K	2.88	2.60	2.50
754-0272	RJR24FW202R	2K	2.88	2.60	2.50
754-0273	RJR24FW502R	5K	2.88	2.60	2.50
754-0274	RJR24FW103R	10K	2.88	2.60	2.50
754-0275	RJR24FW253R	25K	2.88	2.60	2.50
754-0276	RJR24FW503R	50K	2.88	2.60	2.50
754-0277	RJR24FW104R	100K	2.88	2.60	2.50
754-0278	RJR24FW504R	500K	2.88	2.60	2.50
754-0279	RJR24FW105R	1Meg	2.88	2.60	2.50

**Model RJR26 12-Turn Cermet** — **NEW** —



Listed on DESC QPL per high-rel Mil-R-39035. Thin body profile, multi-turn, cermet trimmer with infinite resolution. Outstanding humidity resistance and low contact resistance. Sealed to withstand wave soldering and board washing processes. **Resistance Tolerance:** ±10%. **Power Rating:** 0.25 watt at 85°C. **Adjustment Tool:** H-90.

Stock No.	Mfr.'s Type	Ohms	EACH		
			1-9	10-24	25-49
754-0220	RJR26FW102R	1K	3.31	2.95	2.65
754-0221	RJR26FW202R	2K	2.99	2.70	2.60
754-0222	RJR26FW502R	5K	2.99	2.70	2.60
754-0223	RJR26FW103R	10K	2.99	2.70	2.60
754-0224	RJR26FW203R	20K	2.99	2.70	2.60



**Model 3313 Single-Turn Cermet** — **NEW** —

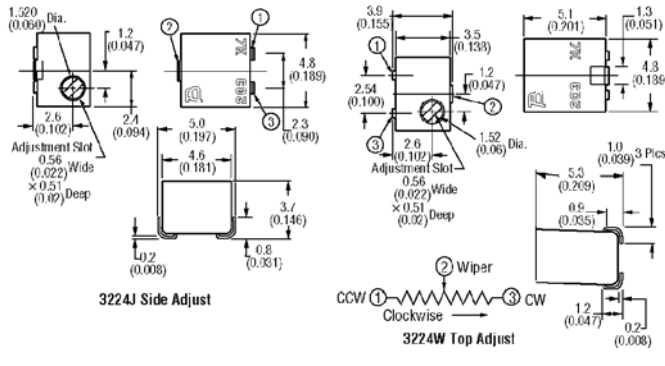
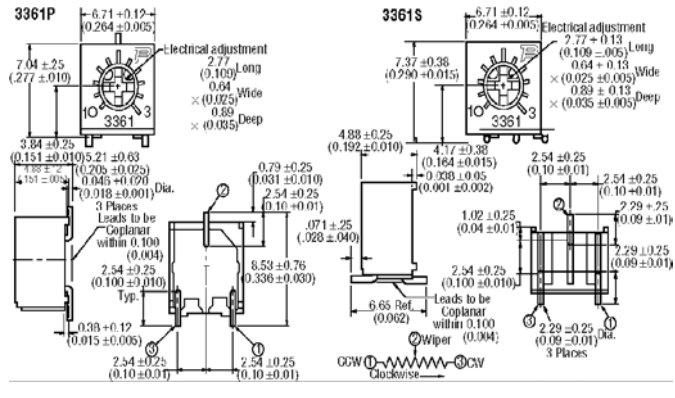
3 mm square single-turn, cermet, sealed trimmer. Compatible with surface mount manufacturing processes. Rotor stop for "in-circuit" adjustment. 100 cycle rotational and seal life. Plastic housing for RF applications. **Resistance Tolerance:** ±20%. **Power Rating:** 0.125 watt at 70°C. **Adjustment Tool:** H-91.

Stock No.	Mfr.'s Type	Ohms	EACH				
			1-9	10-24	25-49	50-99	100-Up
754-0450	3313J-1-101E	100	1.30	1.11	1.02	.94	.78
754-0451	3313J-1-102E	1K	1.28	1.11	1.02	.94	.77
754-0452	3313J-1-502E	5K	1.28	1.11	1.02	.94	.77
754-0453	3313J-1-103E	10K	1.28	1.11	1.02	.94	.77
754-0454	3313J-1-503E	50K	1.28	1.11	1.02	.94	.77
754-0455	3313J-1-104E	100K	1.28	1.11	1.02	.94	.77
754-0456	3313S-1-101E	100	1.60	1.50	1.43	1.38	1.32
754-0457	3313S-1-102E	1K	1.60	1.50	1.43	1.38	1.32
754-0458	3313S-1-502E	5K	1.60	1.50	1.43	1.38	1.32
754-0459	3313S-1-103E	10K	1.60	1.50	1.43	1.38	1.32
754-0465	3313S-1-503E	50K	1.60	1.50	1.43	1.38	1.32
754-0466	3313S-1-104E	100K	1.60	1.50	1.43	1.38	1.32

**Model 3361 Single-Turn Cermet** — **NEW** —

1/4" square single turn, cermet, sealed trimmer in miniature surface mount package. Rotor designed for automatic machine adjust interface. Withstands harsh environments and immersion cleaning processes. Unit is compatible with surface manufacturing processes. **Resistance Tolerance:** ±10%. **Power Rating:** 0.5 watt at 70°C. **Adjustment Tool:** H-90.

Stock No.	Mfr.'s Type	Ohms	EACH				
			1-9	10-24	25-49	50-99	100-Up
754-0470	3361P-1-101G	100	.98	.91	.88	.84	.81
754-0471	3361P-1-102G	1K	.98	.91	.88	.84	.81
754-0472	3361P-1-502G	5K	.98	.91	.88	.84	.81
754-0473	3361P-1-103G	10K	.98	.91	.88	.84	.81
754-0474	3361P-1-253G	25K	.98	.91	.88	.84	.81
754-0475	3361P-1-503G	50K	.98	.91	.88	.84	.81
754-0476	3361P-1-104G	100K	.98	.91	.88	.84	.81
754-0477	3361S-1-101G	100	.98	.91	.88	.84	.81
754-0478	3361S-1-102G	1K	.98	.91	.88	.84	.81
754-0479	3361S-1-502G	5K	.98	.91	.88	.84	.81
754-0480	3361S-1-103G	10K	.98	.91	.88	.84	.81
754-0481	3361S-1-253G	25K	.98	.91	.88	.84	.81
754-0482	3361S-1-503G	50K	.98	.91	.88	.84	.81
754-0483	3361S-1-104G	100K	.98	.91	.88	.84	.81



**Model 3224 Multi-Turn Cermet** — **NEW** —

These industrial 1/4-watt 4 mm 11-turn square surface mount cermet trimmers are sealed to withstand board wash processing. The pick and place centering design have flush adjustment. The design meets EIA/EIAJ/IPC/VRIC SMD standard trimmer footprint. Wiper idles when the stop is reached. **Resistance Tolerance:** 10%. **Power Rating:** 0.25 watt at 85°C. **Dielectric Strength:** 600 VAC. **Temperature Range:** -65°C to +150°C. **Load Life:** 1000 hours. **Adjustment Tool:** H-91. **Terminal:** J-hook.

Stock No.	Mfr.'s Type	Ohms	EACH				
			1-9	10-24	25-49	50-99	100-Up
754-0443	3224J-1-102E	1K	3.43	3.04	2.76	2.53	2.34
754-0442	3224J-1-502E	5K	3.43	3.04	2.76	2.53	2.34
754-0446	3224J-1-103E	10K	3.43	3.04	2.76	2.53	2.34
754-0449	3224J-1-104E	100K	3.43	3.04	2.76	2.53	2.34
754-0420	3224W-1-102E	1K	3.49	3.14	2.86	2.62	2.42
754-0421	3224W-1-202E	2K	3.49	3.14	2.86	2.62	2.42
754-0422	3224W-1-502E	5K	3.43	3.14	2.86	2.62	2.42
754-0423	3224W-1-103E	10K	3.61	3.30	3.01	2.76	2.55
754-0424	3224W-1-203E	20K	3.43	3.14	2.86	2.62	2.42
754-0425	3224W-1-503E	50K	3.43	3.14	2.86	2.62	2.42
754-0426	3224W-1-104E	100K	3.43	3.14	2.86	2.62	2.42