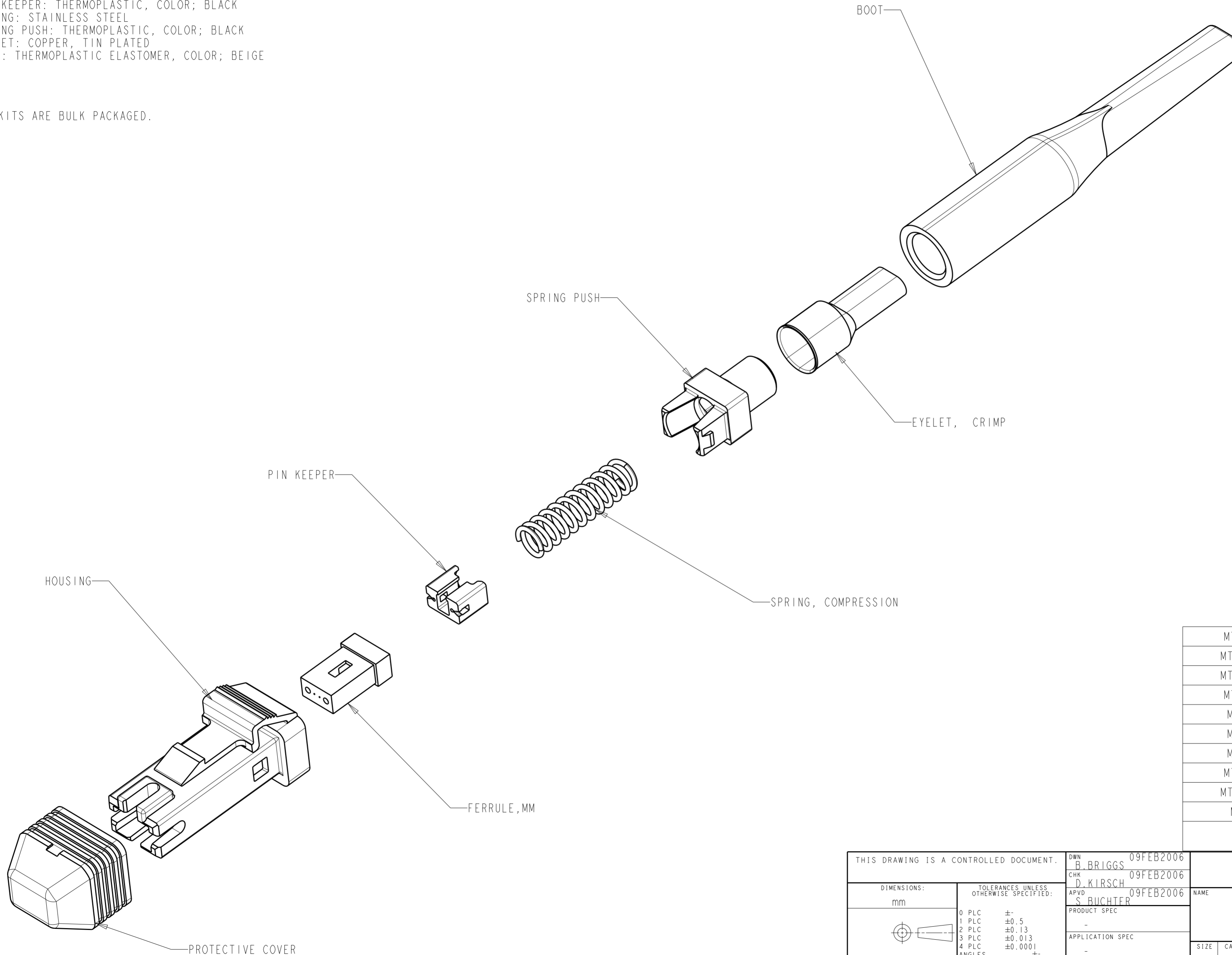


THIS DRAWING IS UNPUBLISHED. RELEASED FOR PUBLICATION
 © COPYRIGHT 20 BY - ALL RIGHTS RESERVED.

LOC	DIST	REVISIONS					
CE	00	P	LTR	DESCRIPTION	DATE	DWN	APVD
		A		REV PER ECO-12-013978	13AUG2012	JM	TE

- 1. PROTECTIVE COVER: THERMOPLASTIC ELASTOMER, COLOR; BLACK
- HOUSING: THERMOPLASTIC, COLOR; SEE TABLE
- FERRULE: PLASTIC, COLOR; BLACK
- PIN KEEPER: THERMOPLASTIC, COLOR; BLACK
- SPRING: STAINLESS STEEL
- SPRING PUSH: THERMOPLASTIC, COLOR; BLACK
- EYELET: COPPER, TIN PLATED
- BOOT: THERMOPLASTIC ELASTOMER, COLOR; BEIGE

2. ALL KITS ARE BULK PACKAGED.



MT-RJ SECURE, SLATE	I-1918356-0
MT-RJ SECURE, ORANGE	1918356-9
MT-RJ SECURE, VIOLET	1918356-8
MT-RJ SECURE, BROWN	1918356-7
MT-RJ SECURE, AQUA	1918356-6
MT-RJ SECURE, ROSE	1918356-5
MT-RJ SECURE, BLUE	1918356-4
MT-RJ SECURE, GREEN	1918356-3
MT-RJ SECURE, YELLOW	1918356-2
MT-RJ SECURE, RED	1918356-1
DESCRIPTION	PART NUMBER

THIS DRAWING IS A CONTROLLED DOCUMENT.

DWN	B. BRIGGS	09FEB2006
CHK	D. KIRSCH	09FEB2006
APVD	S. BUCHTER	09FEB2006
PRODUCT SPEC		
APPLICATION SPEC		
WEIGHT		

TE Connectivity

NAME: KIT, CONNECTOR, MT-RJ, SECURE, 1.8mm, MINI ZIPCORD, MM

SIZE	CAGE CODE	DRAWING NO	RESTRICTED TO
A2	00779	C-1918356	-

Customer Drawing SCALE 7:2 SHEET 1 OF 1 REV A