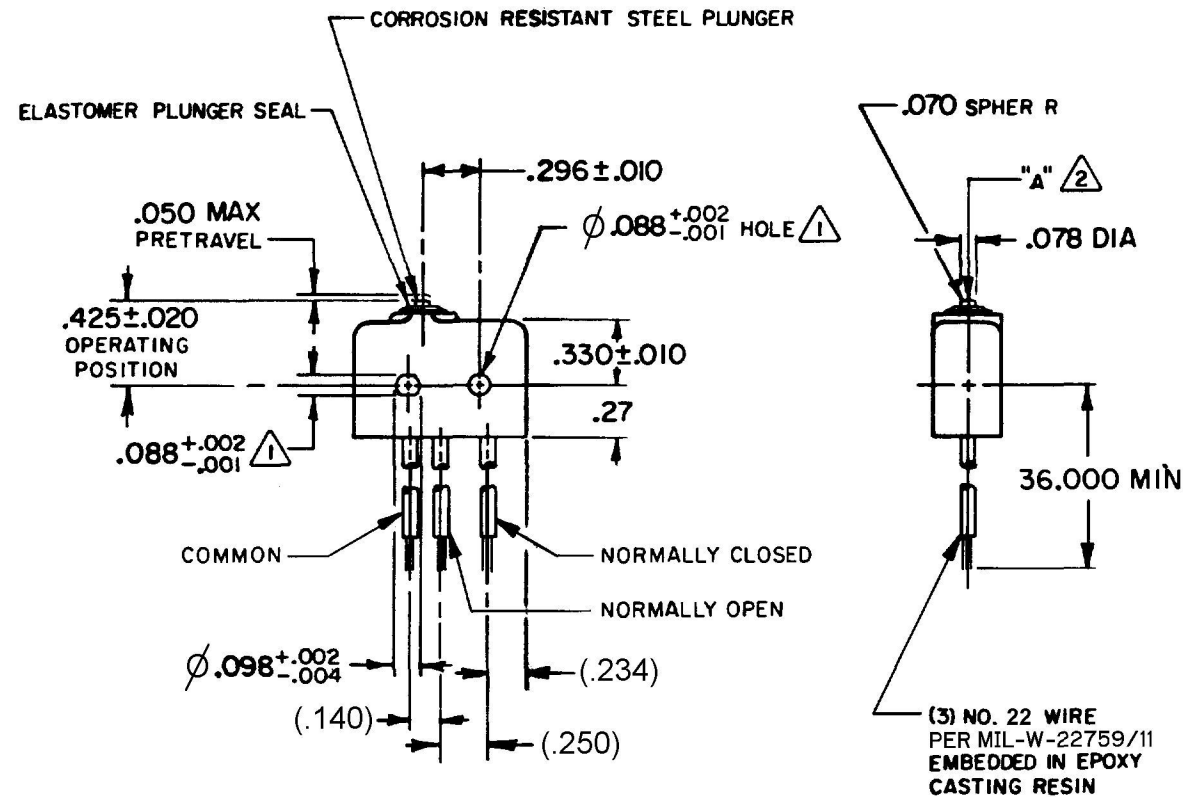
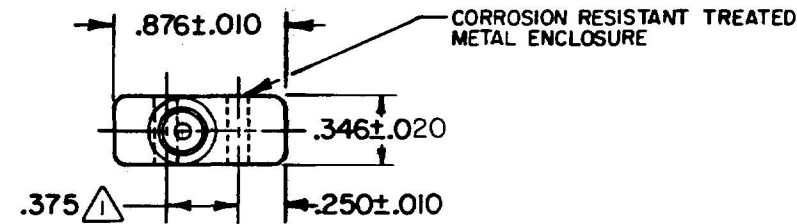


HONEYWELL
PART NUMBER

1SE402-3

REV	DOCUMENT	CHANGED BY	CHECK
A	0010676	CMH 24JAN05	AK



NOTES

- ① MOUNTING HOLES WILL ACCEPT .087 MAX DIA PINS OR SCREWS ON .375 ± .002 CENTERS
 - ② ACTUATION IN LINE WITH ARROW "A" IS RECOMMENDED
 - ③ WEIGHT OF SWITCH ONLY IS .26 OZ MAX. WEIGHT OF SWITCH WITH WIRE LEADS IS 1.00 OZ MAX
- 4 - CONTACT MATERIAL - 24K GOLD PLATED BIFURCATED CONTACTS

CHARACTERISTICS	
OPERATING FORCE	5 - 17 OZ
RELEASE FORCE	4 OZ MIN
RELEASE TRAVEL	.004 MIN
DIFFERENTIAL TRAVEL	.004 MAX
OVERTRAVEL	.003 MIN

ELECTRICAL DATA	
CONTACT ARRANGEMENT S P D T	
30 VOLTS DC RATING	
INDUCTIVE	SEA LEVEL - 1/2 AMP
RESISTIVE	SEA LEVEL - 1 AMP

DESIGN UNITS: INCH	
TOLERANCES UNLESS NOTED:	
NO PLACE	X ± 0.040
ONE PLACE	.X ± 0.030
TWO PLACE	.XX ± 0.015
THREE PLACE	.XXX ± 0.005
FOUR PLACE	.XXXX ± 0.0005
ANGLES	± 2
THIRD ANGLE PROJECTION	

DRAWN	DVM	27JUL04
CHECK	-	-
THIS DRAWING COVERS A PROPRIETARY ITEM AND IS THE PROPERTY OF HONEYWELL. THIS DRAWING IS NOT TO BE COPIED OR USED WITHOUT THE PERMISSION OF HONEYWELL.		
INTERPRET PER ASME Y14.5M-1994 OTHER HONEYWELL ENGINEERING STANDARDS MAY APPLY		
RASTER		

Honeywell			
TITLE SWITCH - BASIC			
SIZE	TYPE	DRAWING NAME	REV
B	I	1SE402-3	A
SCALE	FULL	SHEET	1 OF 1