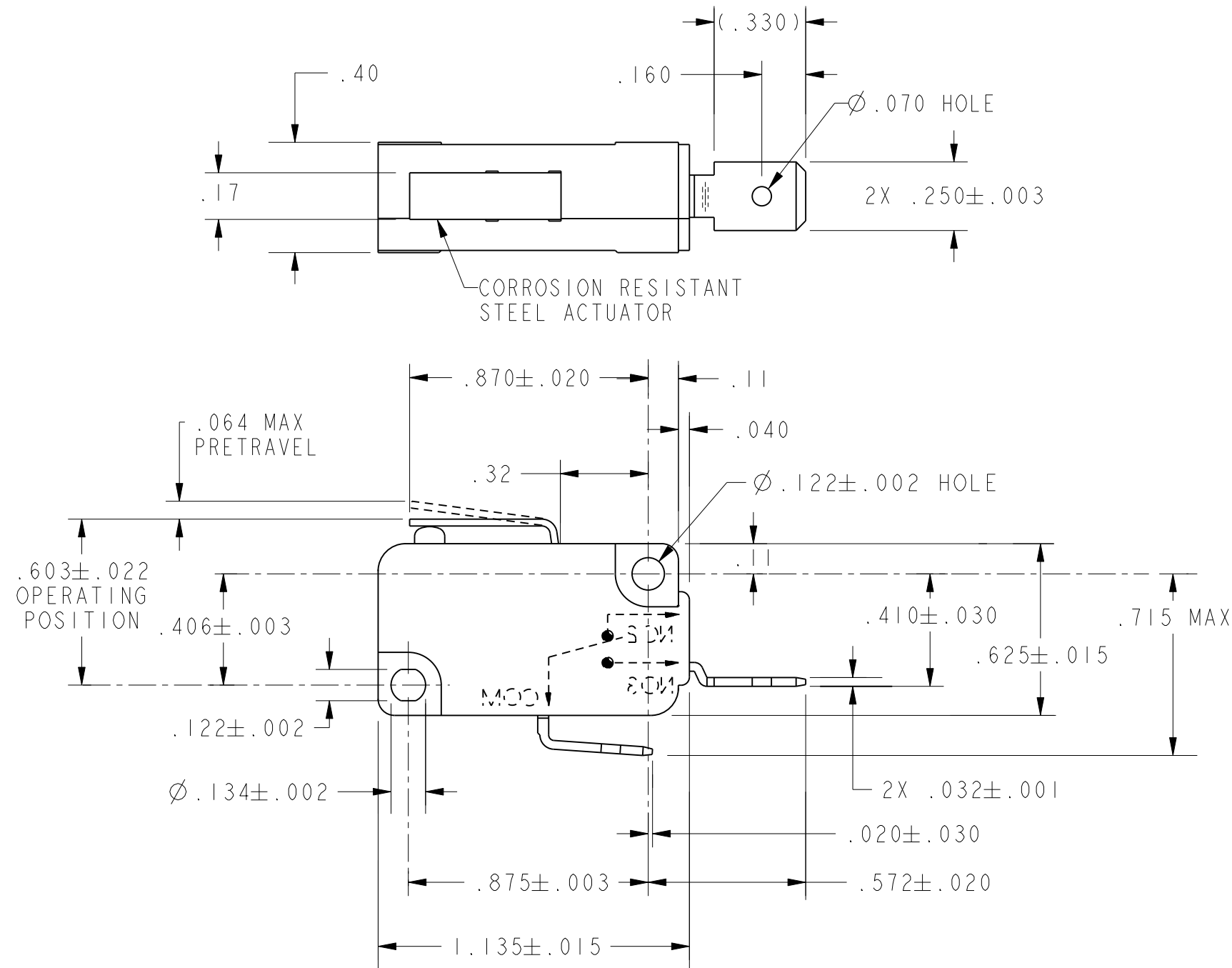


REV	DOCUMENT	CHANGED BY	CHECK
2	0041196	JA 01JUL08	ASD



CHARACTERISTICS	
OPERATING FORCE-----	15 OZ MAX
RELEASE FORCE-----	2 OZ MIN
DIFFERENTIAL TRAVEL-----	.014 MAX
OVERTRAVEL-----	.028 MIN
RELEASE TRAVEL-----	.009 MIN

ELECTRICAL DATA	
CONTACT ARRANGEMENT S P N O	
L215	
15.1A 1/2HP 125, 250 OR 277 VAC 1/2 125VDC	
1/4A 250 VDC; 5A 125 VAC "L"	

UNLESS OTHERWISE SPECIFIED TOLERANCES ARE:			
	<input checked="" type="checkbox"/> US (inch) CUSTOMARY	<input type="checkbox"/> SI (mm) METRIC	
NO PLACE	X	$\pm .040$	± 1
ONE PLACE	.X	$\pm .030$	$\pm 0,4$
TWO PLACE	.XX	$\pm .015$	$\pm 0,15$
THREE PLACE	.XXX	$\pm .005$	\pm
ANGLES \pm			
RAW MATERIAL-COMMERCIAL STANDARD			
THIRD ANGLE PROJECTION			

DRAWN	TSM	5DEC00
CHECK	SAV	20MAR01
THIS DRAWING COVERS A PROPRIETARY ITEM AND IS THE PROPERTY OF HONEYWELL. THIS DRAWING IS NOT TO BE COPIED OR USED WITHOUT THE PERMISSION OF HONEYWELL.		
DIMENSIONS ARE TO BE MET BEFORE PROTECTIVE COATINGS ARE APPLIED		
PTC 2D	ASME Y14.5M-1994	

Honeywell			
TITLE SWITCH, BASIC			
SIZE	DWG TYPE	DRAWING NAME	REV
B	I	V7-6C28E9-002	3
SCALE	2:1	WEIGHT	SHEET 1 OF 1