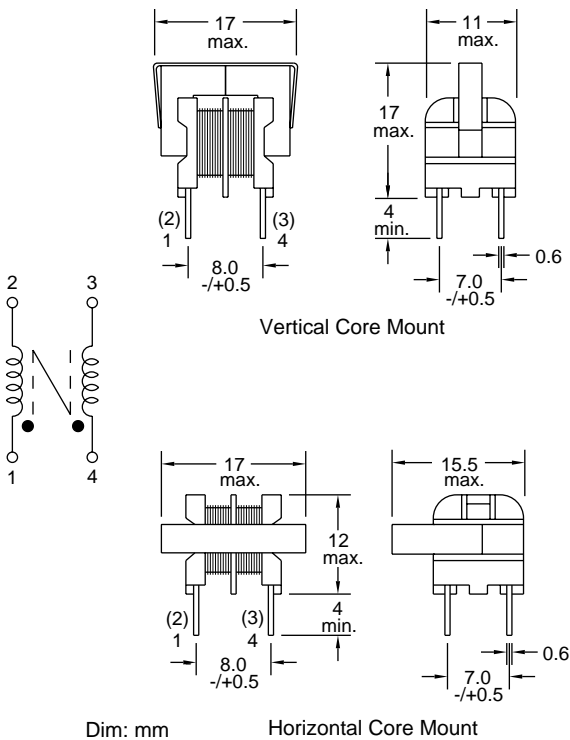


Common Mode Inductors/EMI Filters

Special Features

- Reduce conductive EMI emission
- High inductance, compact size
- High attenuation at low frequency
- Dielectric strength 3750Vrms
- Coil wound on VW-1 rated plastic bobbin
- Core mounted horizontal or vertical (add H or V after P/N)
- Rated current to cause 35°C maximum temperature rise
- Operating temperature -55 to +105°C

| 7300 Series | | | |
|-------------|--------------------------|--------------|--------------------|
| Part Number | L (mH) Min. @ 1KHz | I, DC (A) | DCR (Ω) Max. |
| 7350- | 0.5 | 1.5 | 0.12 |
| 7351- | 1 | 1.2 | 0.22 |
| 7352- | 2 | 0.85 | 0.4 |
| 7353- | 5 | 0.5 | 1.0 |
| 7354- | 8 | 0.4 | 2.0 |
| 7355- | 10 | 0.35 | 2.2 |
| 7356- | 22 | 0.27 | 4.0 |



J.W. Miller
MAGNETICS

306 E. Alondra Blvd., Gardena, CA 90247-1059 • (310) 515-1720 • FAX (310) 515-1962

www.jwmiller.com