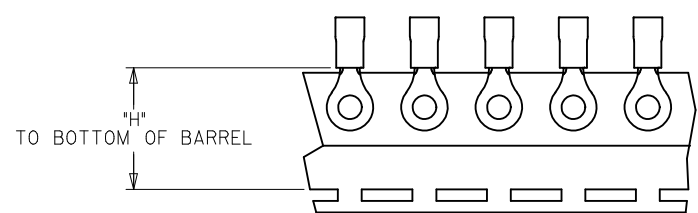
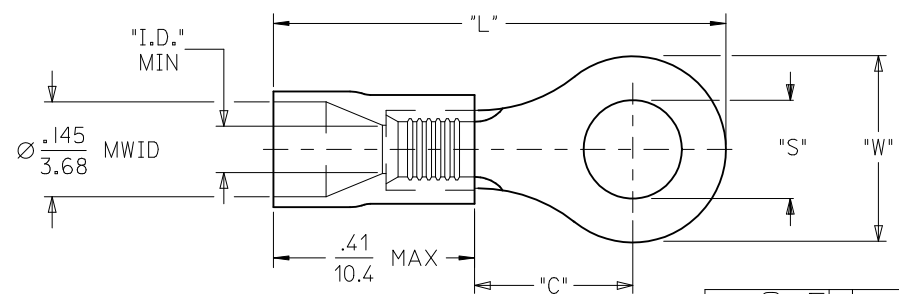


10		9		8		7		6		5		4		3		2		19070	
LOOSE PIECE		TAPE MOUNTED				SPECIFICATIONS													
MATERIAL NUMBER	ALTERNATE NUMBER	MATERIAL NUMBER	ALTERNATE NUMBER	HOUSING COLOR	STUD SIZE	"S" ±.005/(0.13)	"W" MAX.	"C" MIN.	"L" MAX.	"ID" MIN.	STOCK THICKNESS REFERENCE	"H" ±.020/-.051							
F 190700005	AA-220-02X	190700006	AA-220-02XT	RED	2	.094/(2.39)	.235/(6.00)	.157/(3.99)	.709/(18.01)	.062/(1.57)	.028/(0.71)	.980/(24.89)							
190700007	AA-220-04X	190700008	AA-220-04XT	RED	4	.119/(3.02)													
190700009	AA-220-06X	190700010	AA-220-06XT	RED	6	.146/(3.71)													
190700011	AA-221-06X	190700012	AA-221-06XT	RED	6	.146/(3.71)	.322/(8.18)	.270/(6.86)	.866/(22.00)	.062/(1.57)	.028/(0.71)								
190700013	AA-221-08X	190700014	AA-221-08XT	RED	8	.173/(4.39)													
190700015	AA-221-10X	190700017	AA-221-10XT	RED	10	.198/(5.03)													
190700019	AA-221-209X	190700020	AA-221-209XT	RED	M5	.209/(5.18)	.477/(12.11)	.386/(9.80)	1.060/(26.92)	.062/(1.57)	.028/(0.71)								
E 190700021	AA-222-10X	190700022	AA-222-10T	RED	10	.198/(5.03)													
190700023	AA-222-14X	190700024	AA-222-14XT	RED	14	.265/(6.73)													
-	-	190700601 (C2)	AA-222-14XT-BK	BLACK	14	.265/(6.73)	.544/(13.82)	.552/(14.02)	1.259/(31.98)	.055/(1.40)	.031/(0.79)		1.172/(29.77)						
190700026	AA-222-56X	190700027	AA-222-56XT	RED	5/16"	.328/(8.33)													
190700029	AA-226-10X	190700030	AA-226-10XT	RED	10	.198/(5.03)													
190700031	AA-226-14X	190700032	AA-226-14XT	RED	14	.265/(6.73)	.264/(6.70)	.240/(6.10)	.807/(20.50)	.062/(1.57)	.028/(0.71)	.980/(24.89)							
190700036	AA-226-56X	190700037	AA-226-56XT	RED	5/16"	.328/(8.33)													
D 190700033	AA-226-38X	190700035	AA-226-38XT	RED	3/8"	.390/(9.91)													
190700038	AA-232-04X	190700039	AA-232-04XT	RED	4	.119/(3.02)	.283/(7.20)	.240/(6.10)	.816/(20.73)	.062/(1.57)	.028/(0.71)								
190700040	AA-232-06X	190700042	AA-232-06XT	RED	6	.146/(3.71)													
190700044	AA-232-08X	190700045	AA-232-08XT	RED	8	.173/(4.39)													
190700051	AA-233-10X	190700052	AA-233-10XT	RED	10	.198/(5.03)													

(C2)



SALES DRAWING

- NOTE(S):
1. MATERIAL: COPPER
PLATING: ELECTROPLATE TIN
 2. DELETED
 3. INSULATION: MOLDED PVC, SEE CHART FOR COLOR (C2)
 4. MWID=MAXIMUM WIRE INSULATION DIA.
 5. ALL DIMENSIONS IN INCHES (MM).
 6. PARTS ARE ROHS COMPLIANT.

REDRAW: ADD BLACK HSG EC NO: WNA2011-0382 DRAWN: HETHRODAHL 2011/01/20 CHKD: APPR: JMACNEIL 2011/02/21 DESCRIPTION	QUALITY SYMBOLS	GENERAL TOLERANCES (UNLESS SPECIFIED)	DIMENSION STYLE	SCALE	DESIGN UNITS	THIRD ANGLE PROJECTION
	▽=0	mm INCH	IN/MM	---	INCH	
	▽7=0	4 PLACES ± --- ± ---	DRAWN BY DATE	TITLE		
		3 PLACES ± --- ± ---	DMYRICK 2005/7/22	RING TONGUE TERMINAL INSULKRIMP, 200-SERIES 22-18 AWG		
	2 PLACES ± --- ± ---	CHECKED BY DATE	MATERIAL NO.			
	1 PLACE ± --- ± ---	HBEITZEL 2005/7/22	SD-19070-003			
	ANGULAR ± ---°	APPROVED BY DATE	SHEET NO.			
		RDEROSS 2005/7/22	1 OF 1			
		MATERIAL NO.	THIS DRAWING CONTAINS INFORMATION THAT IS PROPRIETARY TO MOLEX INCORPORATED AND SHOULD NOT BE USED WITHOUT WRITTEN PERMISSION			
		DRAFT WHERE APPLICABLE MUST REMAIN WITHIN DIMENSIONS				
		SEE CHART				
		SIZE B				