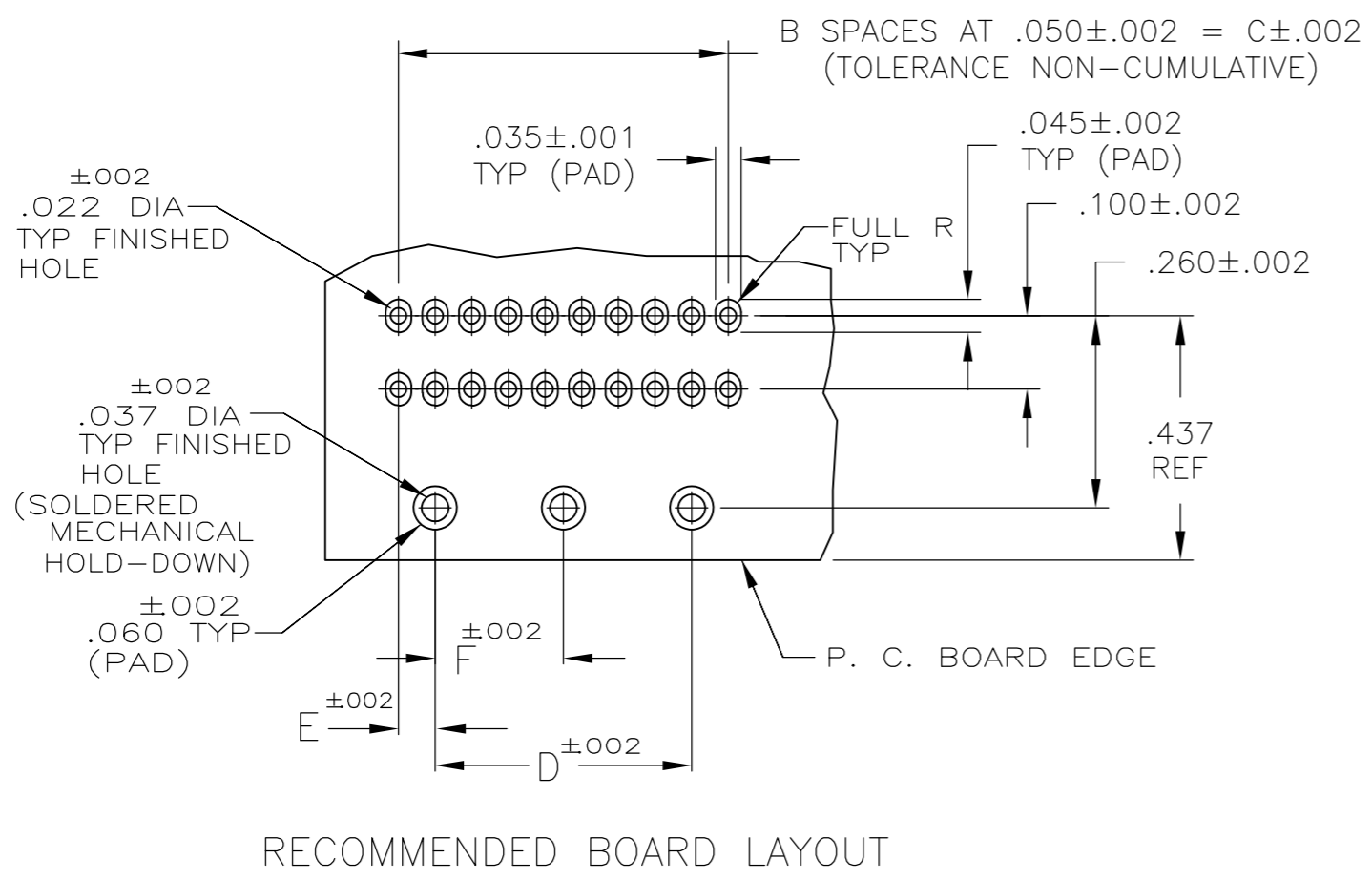
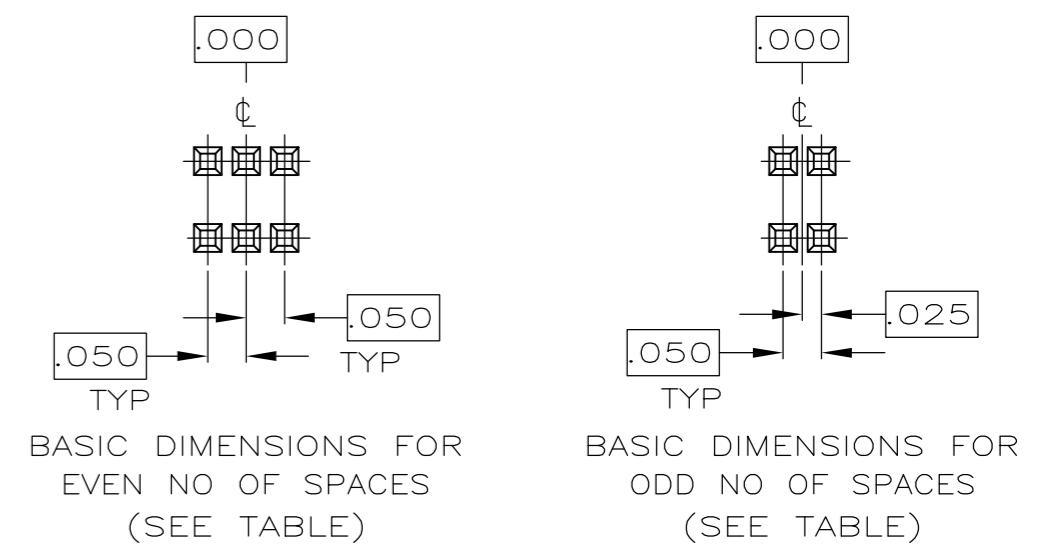
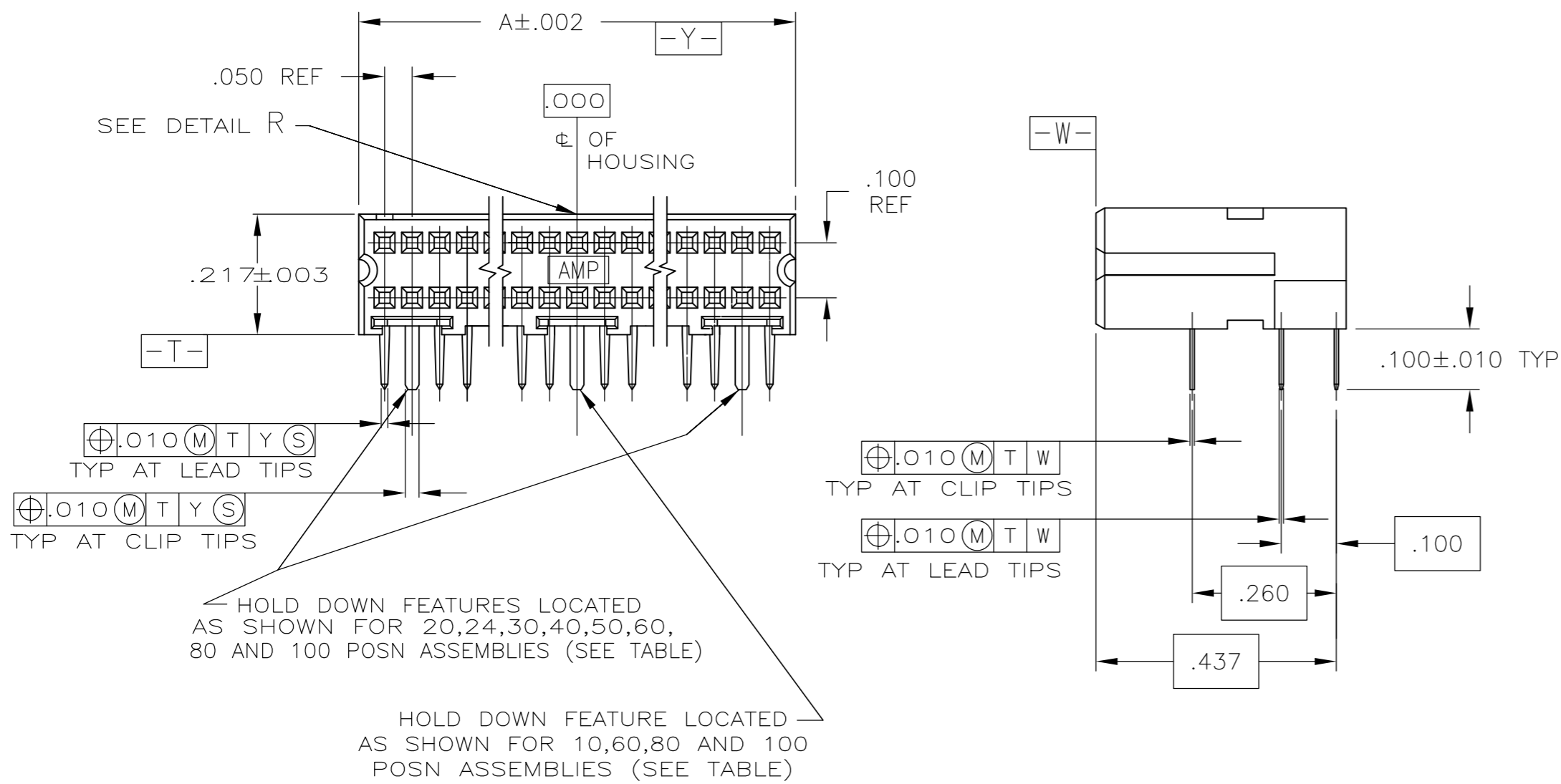
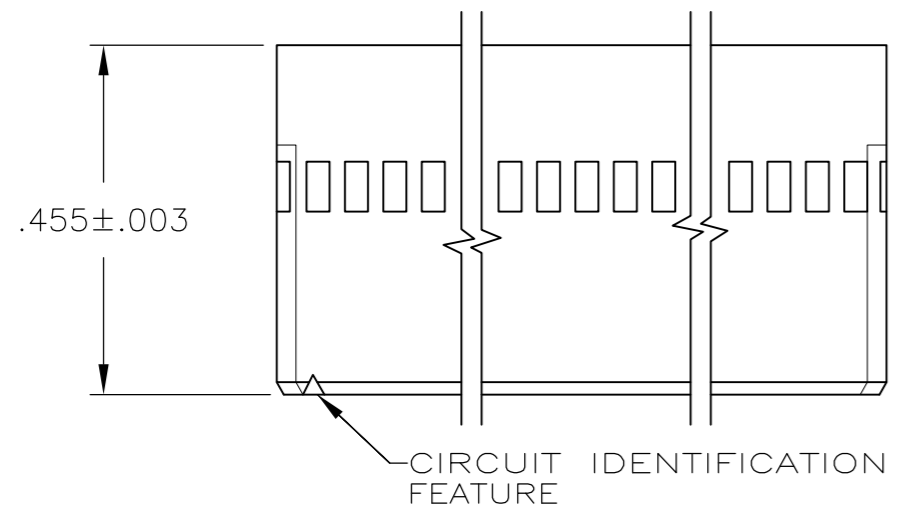


THIS DRAWING IS UNPUBLISHED. RELEASED FOR PUBLICATION
 © COPYRIGHT - By - ALL RIGHTS RESERVED.

| LOC | DIST | REVISIONS | | | |
|-----|------|-------------|---------------------------|-----------|-------|
| P | LTR | DESCRIPTION | DATE | DWN | APVD |
| AD | 39 | M | REVISED PER ECO-14-004696 | 08APR2014 | NK JO |



RECOMMENDED BOARD LAYOUT

| | | | | | | | | | |
|---|--|------------------|------------|----------|--|------------------|------------|-----------|--|
| THIS DRAWING IS A CONTROLLED DOCUMENT. | | DWN | D CLOUSER | 3-20-86 | | TE Connectivity | | | |
| DIMENSIONS: INCHES | | CHK | J S STARON | 3-20-86 | | NAME | | | |
| TOLERANCES UNLESS OTHERWISE SPECIFIED: | | APVD | J S STARON | 3-20-86 | | PRODUCT SPEC | | | |
| 0 PLC ± - 1 PLC ± - 2 PLC ± - 3 PLC ± - 4 PLC ± - ANGLES ± - FINISH SEE TABLE | | APPLICATION SPEC | | 108-1093 | | RESTRICTED TO | | | |
| MATERIAL | | WEIGHT | | SIZE | | CAGE CODE | DRAWING NO | REVISIONS | |
| | | - | | A2 | | 00779 | C=103911 | - | |
| SCALE | | SHEET | | REV | | CUSTOMER DRAWING | | | |
| 4:1 | | 1 of 2 | | M | | | | | |


THIS DRAWING IS UNPUBLISHED. RELEASED FOR PUBLICATION
 © COPYRIGHT - By - ALL RIGHTS RESERVED.

| LOC | DIST | REVISIONS | | | | | |
|-----|------|-----------|-----|-------------|------|-----|------|
| AD | 39 | P | LTR | DESCRIPTION | DATE | DWN | APVD |
| | | - | | SEE SHEET 1 | - | - | - |

- ① CONTACT AREA PLATED WITH .000030 GOLD; SOLDER CLIPS AND LEADS PLATED WITH .000150 TIN-LEAD; ALL OVER .000050 NICKEL
- ② POINT OF MEASUREMENT FOR GOLD THICKNESS IS .030 FROM MATING END OF CONTACT
- ③ HOUSING: THERMOPLASTIC, COLOR-BLACK. CONTACT: COPPER ALLOY. SOLDER CLIP: PHOSPHOR BRONZE
- ④ CONTACT AREA PLATED WITH .000030 GOLD; SOLDER CLIPS AND LEADS PLATED WITH .000150 TIN ALL OVER .000050 NICKEL
- ⑤ PRELIMINARY - NOT FOR PRODUCTION
- ⑥ ROHS 2002/95/EC COMPLIANT
- ⑦ FINISH, .000001 MIN. GOLD ON GOLD PLATED AREA, .000150-.000250 MATTE TIN LEAD ON TIN PLATE AREA, UNDER PLATING SHOULD BE .000050-.000100 NICKEL ON ENTIRE CONTACT.
- ⑧ SUPERCEDED BY 5-103911-5
- ⑨ OBSOLETE PARTS: OBSOLETE CIS STREAMLINING PER D.RENAUD/D.SINISI
- ⑩ OBSOLETE
- ⑪ FINISH: .000001 MIN GOLD ON GOLD PLATED AREA. .000150-.000250 MATTE TIN ON TIN PLATED AREA. UNDER PLATING: .000050-.000100 NICKEL ON ENTIRE CONTACT

| | | | | | | | | | |
|--------|-------|------|-------|-------|------|-------|------------|-------------|------------|
| ①⑥ | - | .050 | .450 | .550 | 11 | .644 | 24 | ⑤ | 7-103911-9 |
| | 1.175 | .050 | 2.350 | 2.450 | 49 | 2.544 | 100 | | 7-103911-8 |
| | - | .050 | .600 | .700 | 14 | .794 | 30 | ⑤ | 7-103911-7 |
| | .925 | .050 | 1.850 | 1.950 | 39 | 2.044 | 80 | ⑤ | 7-103911-6 |
| | - | .050 | .850 | .950 | 19 | 1.044 | 40 | ⑤ | 7-103911-5 |
| | - | .050 | 1.100 | 1.200 | 24 | 1.294 | 50 | ⑤ | 7-103911-4 |
| | .675 | .050 | 1.350 | 1.450 | 29 | 1.544 | 60 | ⑤ | 7-103911-3 |
| - | .050 | .350 | .450 | 9 | .544 | 20 | | 7-103911-2 | |
| - | .100 | - | .200 | 4 | .294 | 10 | ⑤ | 7-103911-1 | |
| ④⑥ | - | .050 | .450 | .550 | 11 | .644 | 24 | ⑩ | 5-103911-9 |
| | 1.175 | .050 | 2.350 | 2.450 | 49 | 2.544 | 100 | | 5-103911-8 |
| | - | .050 | .600 | .700 | 14 | .794 | 30 | | 5-103911-7 |
| | .925 | .050 | 1.850 | 1.950 | 39 | 2.044 | 80 | ⑨ | 5-103911-6 |
| | - | .050 | .850 | .950 | 19 | 1.044 | 40 | | 5-103911-5 |
| | - | .050 | 1.100 | 1.200 | 24 | 1.294 | 50 | | 5-103911-4 |
| | .675 | .050 | 1.350 | 1.450 | 29 | 1.544 | 60 | | 5-103911-3 |
| - | .050 | .350 | .450 | 9 | .544 | 20 | | 5-103911-2 | |
| - | .100 | - | .200 | 4 | .294 | 10 | | 5-103911-1 | |
| FINISH | F | E | D | C | B | A | NO OF POSN | PART NUMBER | |

| | | | | | | | | | |
|--------|-------|------|-------|-------|------|-------|------------|-------------|------------|
| ⑦ | - | .050 | .450 | .550 | 11 | .644 | 24 | ⑤ | 2-103911-9 |
| | 1.175 | .050 | 2.350 | 2.450 | 49 | 2.544 | 100 | ⑤ | 2-103911-8 |
| | - | .050 | .600 | .700 | 14 | .794 | 30 | ⑤ | 2-103911-7 |
| | .925 | .050 | 1.850 | 1.950 | 39 | 2.044 | 80 | ⑤ | 2-103911-6 |
| | - | .050 | .850 | .950 | 19 | 1.044 | 40 | ⑤ | 2-103911-5 |
| | - | .050 | 1.100 | 1.200 | 24 | 1.294 | 50 | | 2-103911-4 |
| | .675 | .050 | 1.350 | 1.450 | 29 | 1.544 | 60 | ⑤ | 2-103911-3 |
| - | .050 | .350 | .450 | 9 | .544 | 20 | ⑤ | 2-103911-2 | |
| - | .100 | - | .200 | 4 | .294 | 10 | | 2-103911-1 | |
| ① | - | .050 | .450 | .550 | 11 | .644 | 24 | ⑩ | 103911-9 |
| | 1.175 | .050 | 2.350 | 2.450 | 49 | 2.544 | 100 | | 103911-8 |
| | - | .050 | .600 | .700 | 14 | .794 | 30 | | 103911-7 |
| | .925 | .050 | 1.850 | 1.950 | 39 | 2.044 | 80 | ⑨ | 103911-6 |
| | - | .050 | .850 | .950 | 19 | 1.044 | 40 | ⑧ | 103911-5 |
| | - | .050 | 1.100 | 1.200 | 24 | 1.294 | 50 | | 103911-4 |
| | .675 | .050 | 1.350 | 1.450 | 29 | 1.544 | 60 | | 103911-3 |
| - | .050 | .350 | .450 | 9 | .544 | 20 | | 103911-2 | |
| - | .100 | - | .200 | 4 | .294 | 10 | | 103911-1 | |
| FINISH | F | E | D | C | B | A | NO OF POSN | PART NUMBER | |

| | | | | | | | | |
|---|--|------------------|---|---------|---|-----------|------------|---------------|
| THIS DRAWING IS A CONTROLLED DOCUMENT. | | DWN | D CLOUSER | 3-20-86 |  TE Connectivity | | | |
| DIMENSIONS: INCHES | | CHK | J S STARON | 3-20-86 | | | | |
| TOLERANCES UNLESS OTHERWISE SPECIFIED: | | APVD | J S STARON | 3-20-86 | | | | |
| 0 PLC ± - 1 PLC ± - 2 PLC ± - 3 PLC ± - 4 PLC ± - ANGLES ± - | | NAME | RECEPTACLE ASSEMBLY, RIGHT ANGLE, AMPMODU System 50 | | | | | |
| MATERIAL - | | PRODUCT SPEC | 108-1093 | | SIZE | CAGE CODE | DRAWING NO | RESTRICTED TO |
| FINISH SEE TABLE | | APPLICATION SPEC | 114-25031 | | A2 | 00779 | C=103911 | - |
| | | WEIGHT | - | | SCALE | 4:1 | SHEET | 2 of 2 |
| | | CUSTOMER DRAWING | | | REV | M | | |