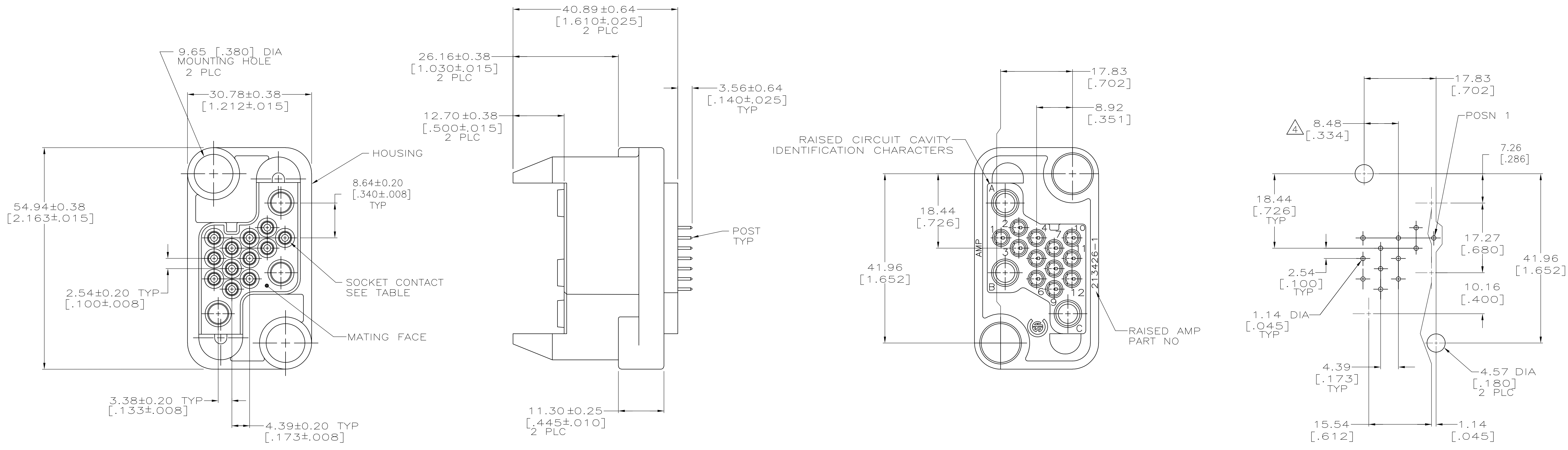


LOC	DIST	REVISIONS			
P	LTR	DESCRIPTION	DATE	DMN	APVD
B		REVISED PER 063B-0230-05	4/27/05	SS	GS
B1		REVISED PER ECO-09-021826	07JAN10	KK	AEG



- THIS PLUG HOUSING MATES WITH RECEPTACLE HOUSING PART NUMBER 213427-1.
- SOCKET CONTACT: 0.76µm[.000030] MIN GOLD FOR A LENGTH OF 5.08[.200] MIN FROM MATING END, GOLD FLASH ON THE REMAINDER, BOTH OVER 1.27µm [.000050] MIN NICKEL ON SOCKET END. POST END 2.54µm[.000100] MIN TIN-LEAD OVER 2.54µm[.000100] MIN COPPER.
- CONTACT ASSEMBLY SHOULD BE FULLY SEATED IN HOUSING PRIOR TO SOLDERING TO PRINTED CIRCUIT BOARD.
- THIS DIMENSION HAS BEEN CHANGED FROM THE STANDARD MOUNTING DIMENSION BY 0.43[.017] DUE TO THE POSTED CONTACT.
- HOUSING: POLYESTER, BLACK.  
SOCKET CONTACT: BRASS.  
SPRING: STAINLESS STEEL.  
POST: BRASS.
- POSITIONS 1 THRU 4,7,8,10 & 11 SELECTIVELY LOADED WITH POSTED TYPE III+ SOCKET CONTACT.
- POSITIONS 1 THRU 12 LOADED WITH POSTED TYPE III+ SOCKET CONTACT.
- SOCKET CONTACT: 0.76µm[.000030] MIN GOLD FOR A LENGTH OF 5.08[.200] MIN FROM MATING END, GOLD FLASH ON THE REMAINDER, BOTH OVER 1.27µm [.000050] MIN NICKEL ON SOCKET END. POST END 2.54µm[.000100] MIN TIN OVER 2.54µm[.000100] MIN COPPER.
- OBSOLETE PARTS: OBSOLETE CIS STREAMLINING PER D.RENAUD/D.SINISI

RECOMMENDED PCB LAYOUT

FINISH	CONTACT LOADING	PART NUMBER
8	7	213908-4
8	6	213908-3
2	7	213908-2
2	6	213908-1

THIS DRAWING IS A CONTROLLED DOCUMENT.

DIMENSIONS: mm [INCHES]	TOLERANCES UNLESS OTHERWISE SPECIFIED:	DIN C. OBERMAN 25 OCT 95	APVD M. McALONIS 25 OCT 95	NAME M. McALONIS	TYCO ELECTRONICS Corporation Harrisburg, Pa 17105-3608
0 PLC ± -	1 PLC ± -	2 PLC ± 0.13 [.005]	3 PLC ± -	4 PLC ± -	ANGLES ± -
MATERIAL -	FINISH -	SIZE 114-10039	WEIGHT -	SCALE 2:1	SHEET 1 OF 1
CUSTOMER DRAWING		A1 00779 C=213908		REV B1	